



COVID Epidemiology Situation Update

Tim Lant, PhD, MAS, Heather Ross PhD, DNP, ANP-BC, Anna Muldoon, MPH, Samantha Sokol, Jordy Rodriguez, Esma Gel, PhD, and Megan Jehn, PhD

February 22, 2021

Summary

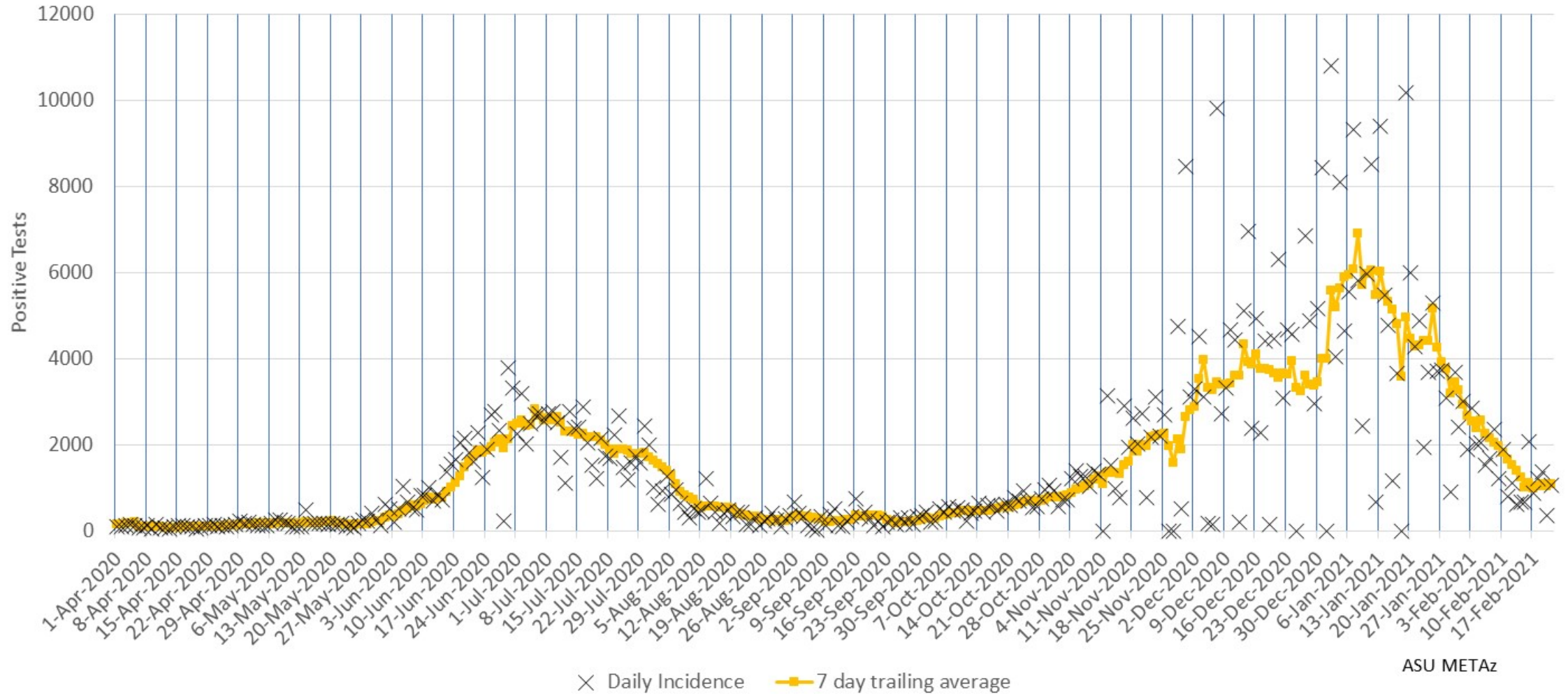
February 22, 2021				
	Statewide		Maricopa	
	Reported Today	Cumulative	Reported Today	Cumulative
Cases	1,507	809,474	1,054	506,046
PCR Tests	9,336	3,703,153	6,102	2,226,908
% Positive	16.1%	21.9%	17.3%	15.1%
Hospitalizations	0	56,994	31	35,403
Deaths	-3	15,502	-2	8,833
<i>All data pulled from azdhs.gov. Numbers may not match Maricopa county data.</i>				

- Today's statewide case count is 1,507 with 1054 cases (70%) in Maricopa County, higher than population distribution. The 7-day average for reported cases has fallen to 1,552, similar to early November at the beginning of the most recent surge.
- After 6 weeks of consistent declines, the epi curve appears to have plateaued in Maricopa County and statewide for the past few days. Peak cases by incident date remains 1/4.
- 7-day average positivity continues to trend downward.
- Hospital utilization continues to decline slowly and is now at levels similar to mid-November whereas case counts are similar to early-November levels. The continuing disparity suggests an overall decline in testing behaviors – and thus diagnosed mild COVID-19 cases – in the general public.
- Bed usage for COVID-19 is 19% of inpatient beds and 27% of ICU beds statewide. Current hospital utilization is 87% for inpatient beds and 85% for ICU beds including COVID and non-COVID utilization.
- Despite declining hospital utilization, hospital death rates continue to increase with stable hospitalization rates for COVID cases, indicating the higher acuity of patients admitted to the hospital compared to earlier in the pandemic.
- COVID-19 has become the leading cause of death in Arizona in a 12-month period. Note that deaths are generally not reported on Mondays.

Maricopa County Analysis

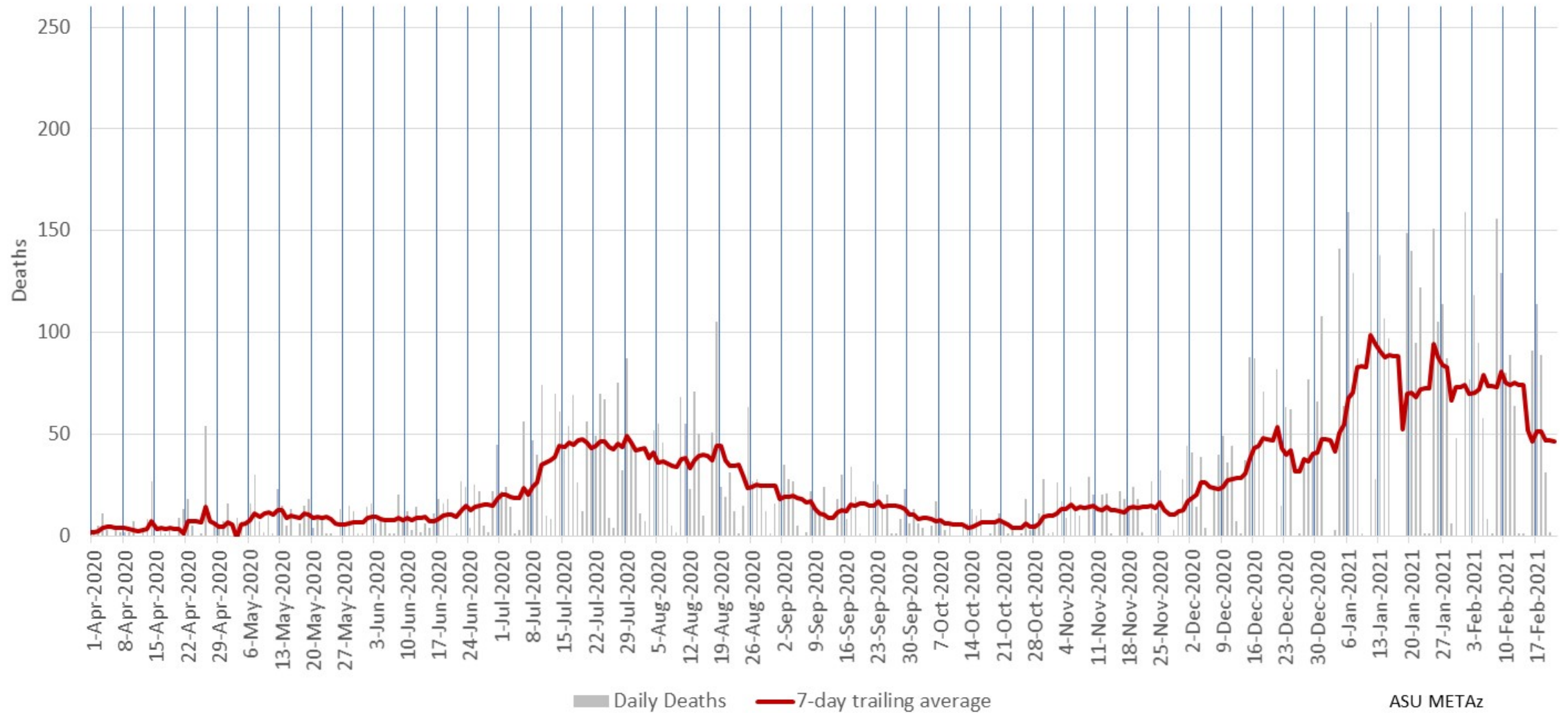


Maricopa County Daily COVID-19 Positive Tests Results Reported (confirmed incidence)



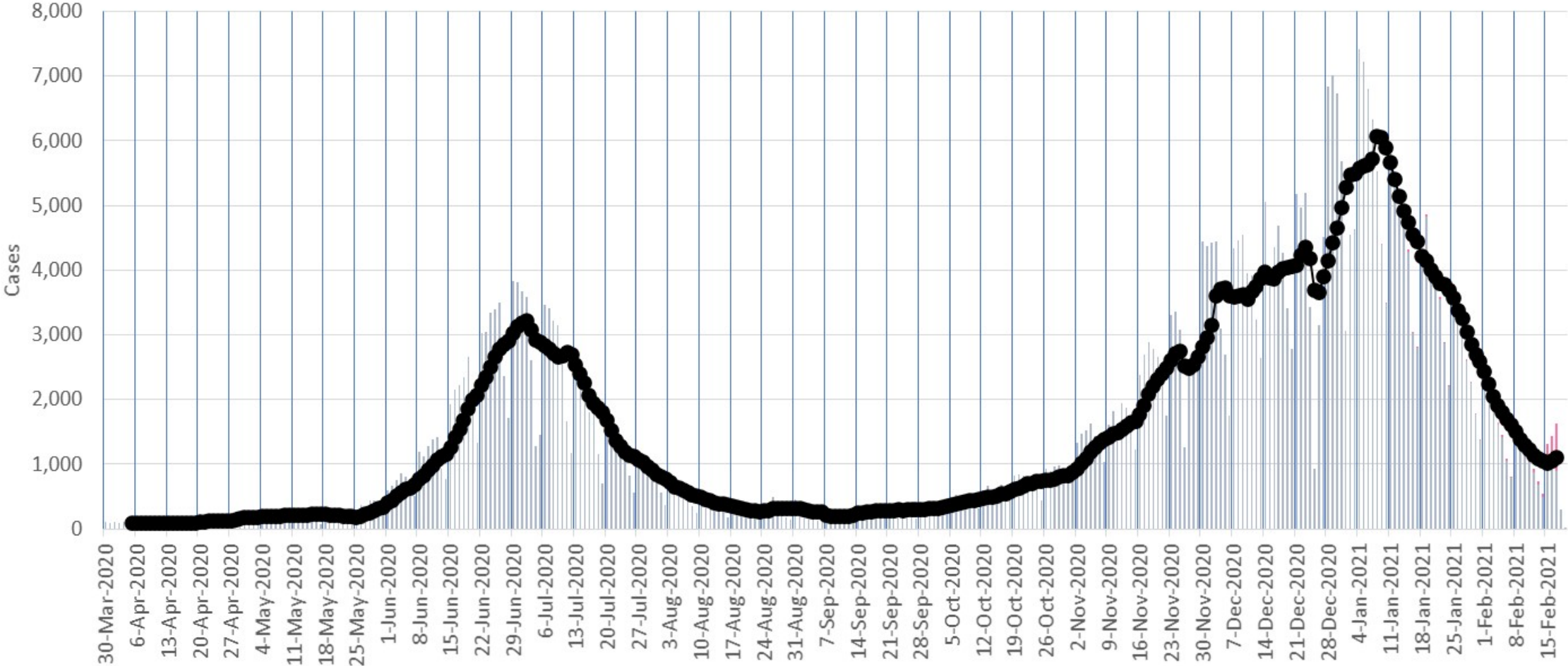
Due to the holidays, multiple days of data were held (Nov 11, 26 & 27; December 25, January 1 & 18) and reported on the next business day.

Maricopa County Daily COVID-19 Deaths (by date of reporting)



Due to the holidays, multiple days of data were held (Nov 11, 26 & 27; December 25, January 1) and reported on the next business day.

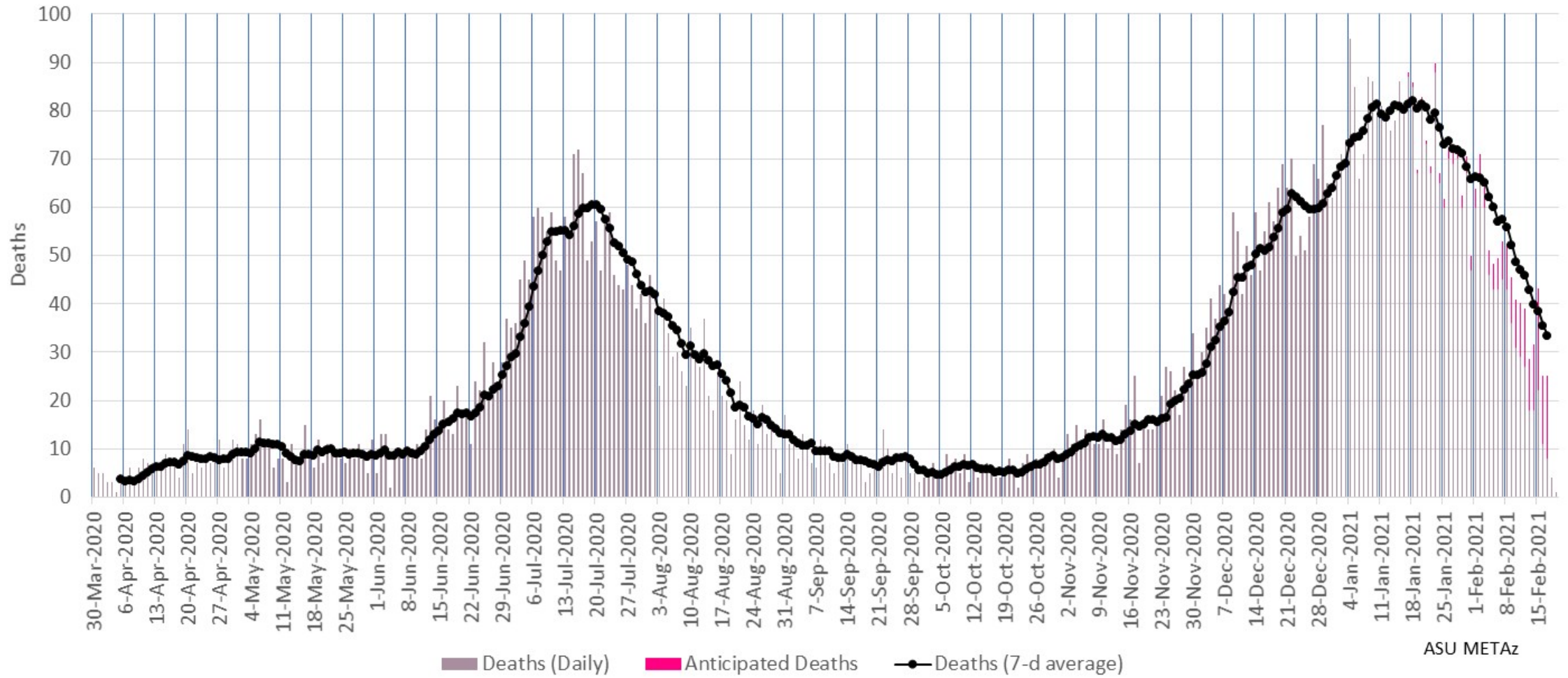
Maricopa County Daily COVID-19 Cases by Date of Sample Collection (Epi Curve)



■ Incidence (Daily) ■ Anticipated Cases ● 7 day adjusted average

ASU METAz

Maricopa County Daily COVID-19 Deaths by Date of Death (Epi Curve)



ASU METAz

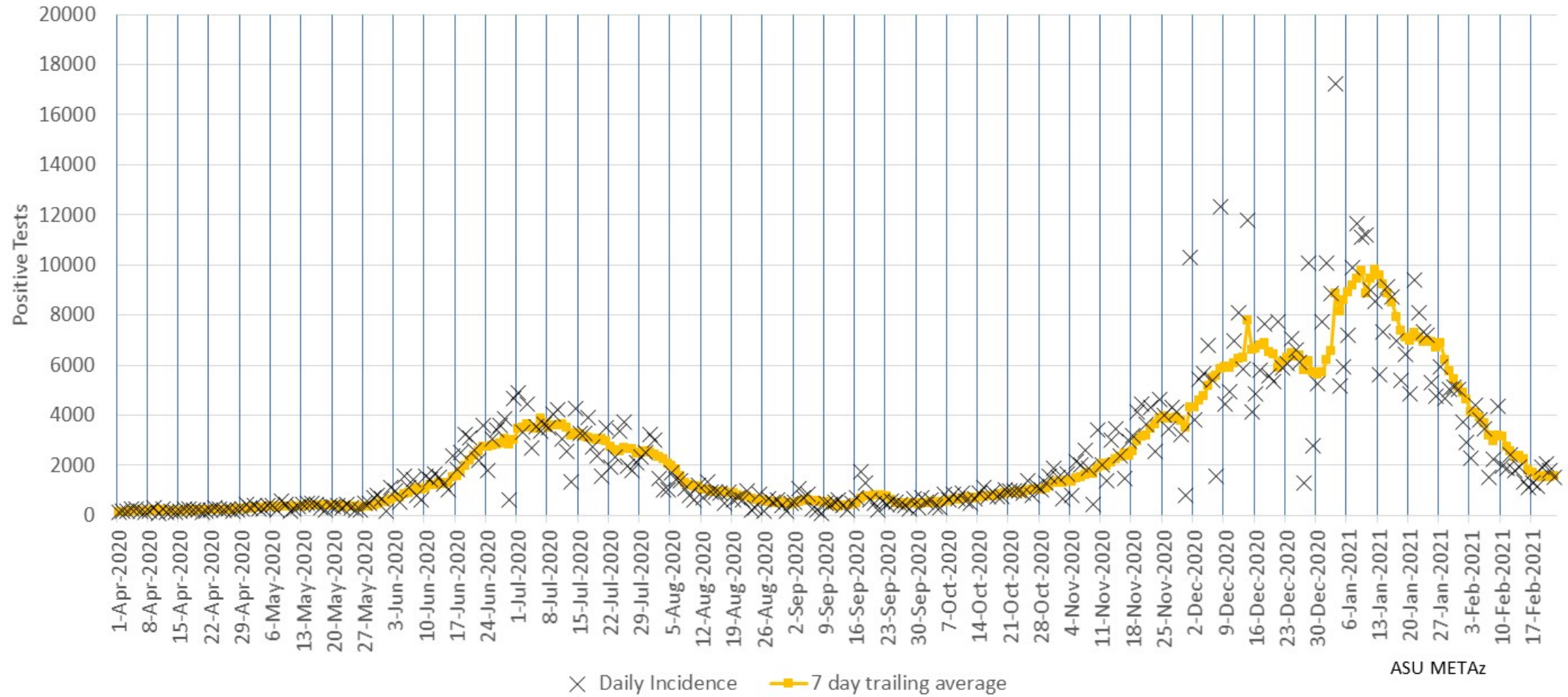
Arizona Statewide Analysis



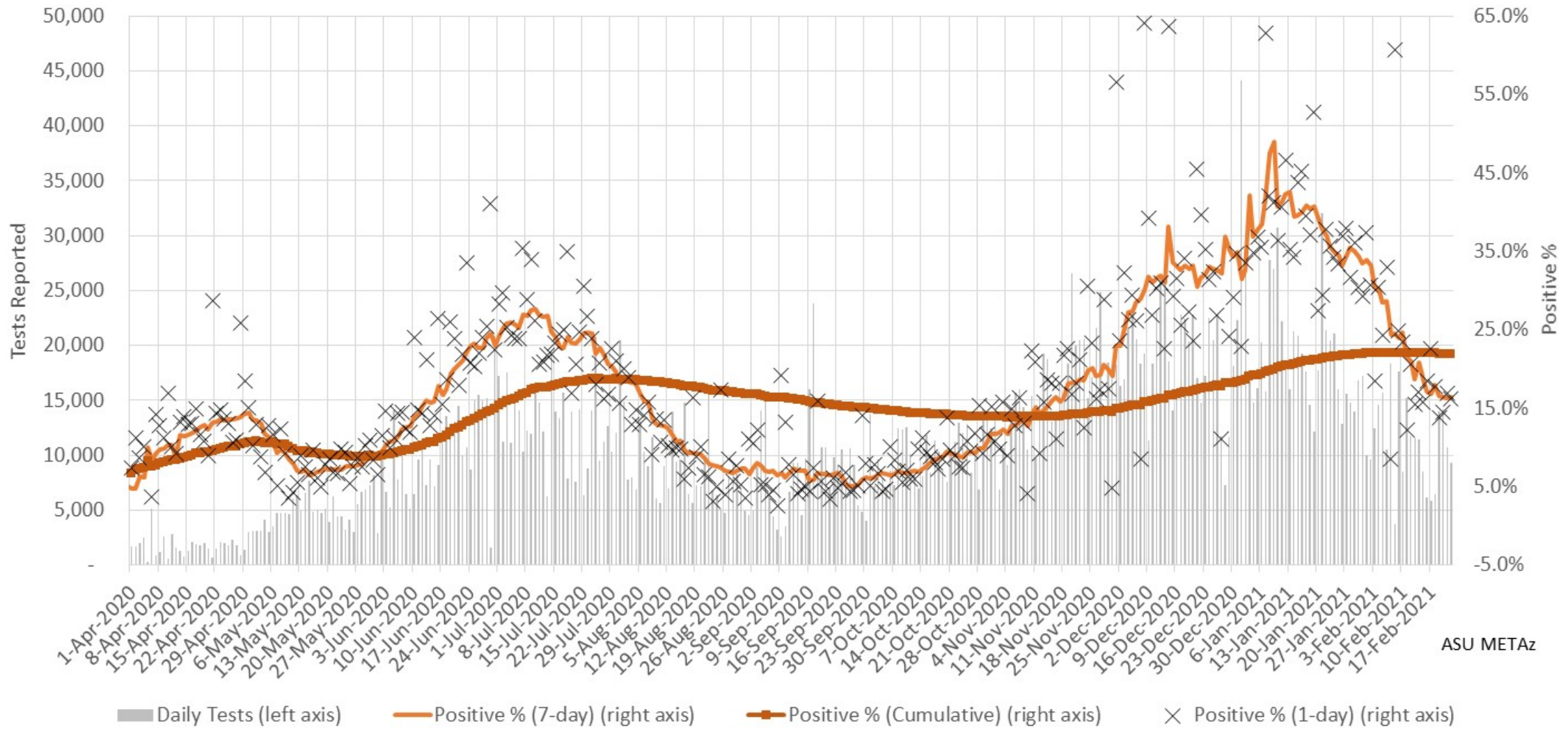
Epidemiology



Arizona Statewide Daily COVID-19 Positive Tests Results Reported (confirmed incidence)

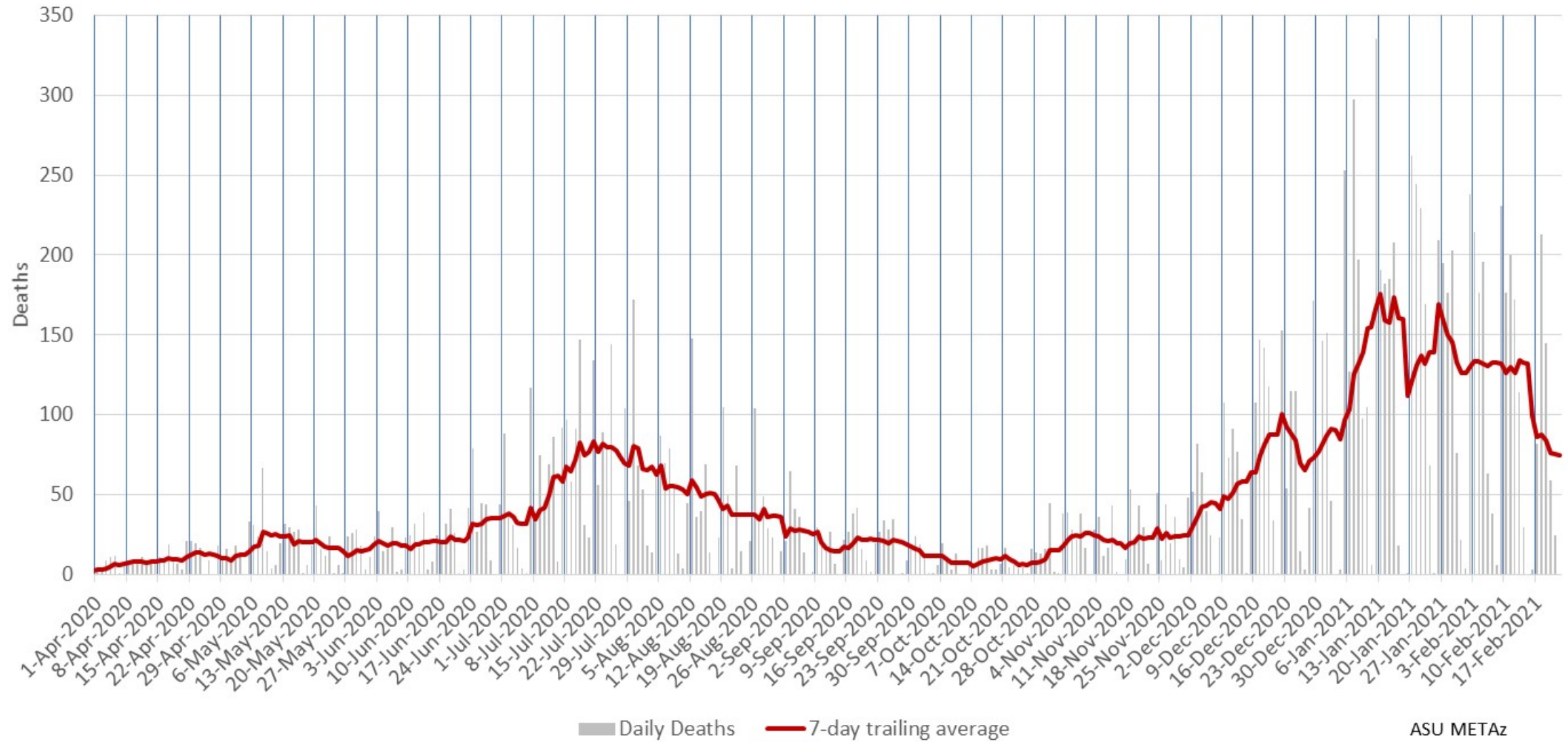


Arizona Statewide Rolling weekly positive COVID-19 test rate



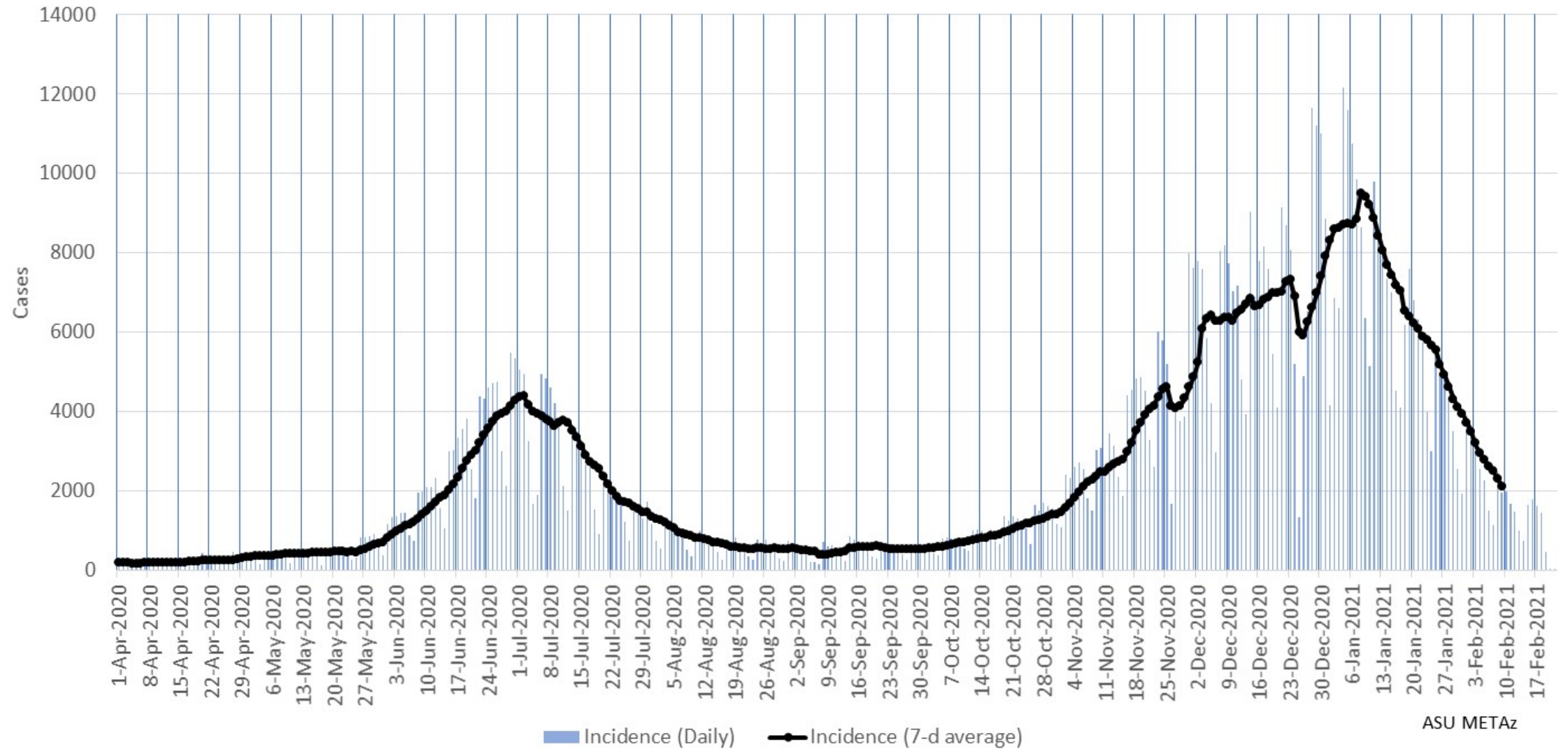
ASU METAz

Arizona Statewide Daily COVID-19 Deaths (by date of reporting)



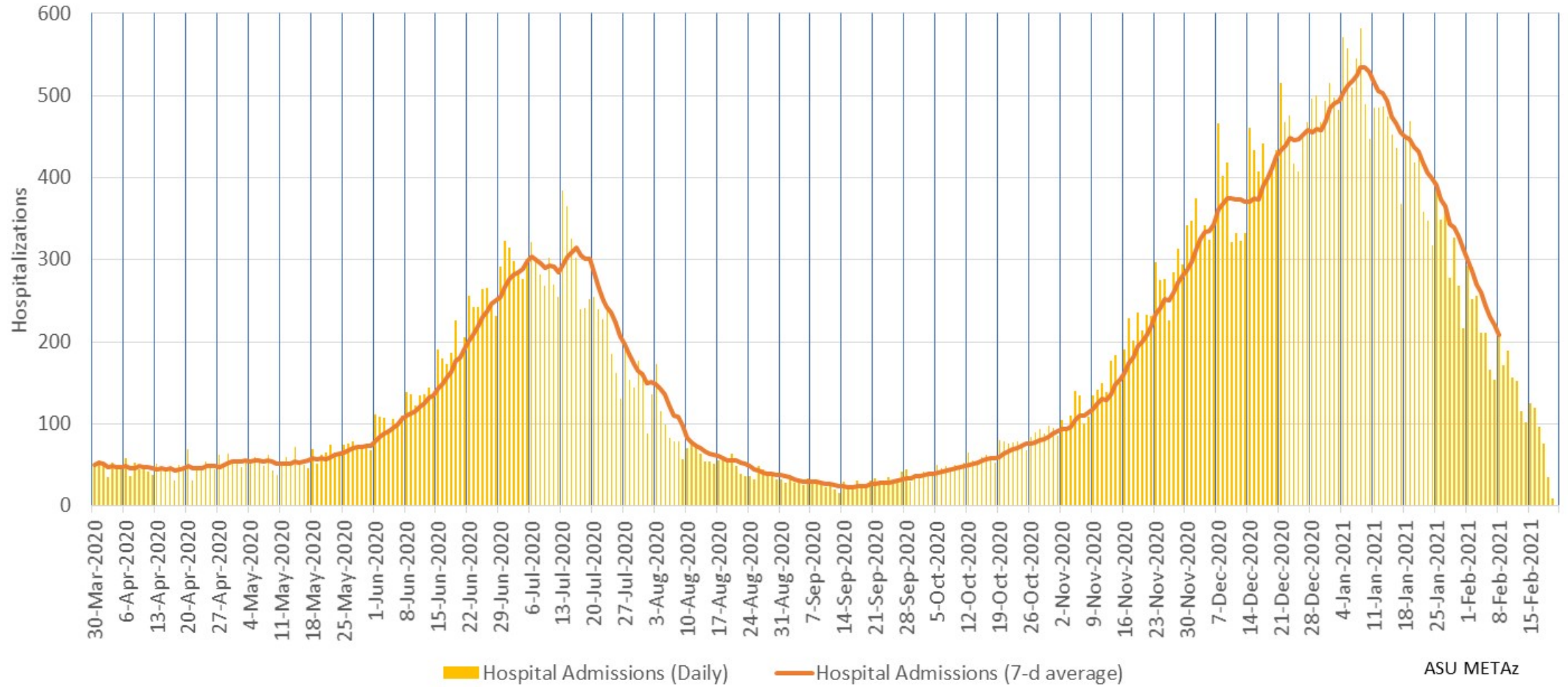
ASU METAz

Arizona Statewide Daily COVID-19 Cases by Date of Sample Collection
(Epi Curve)

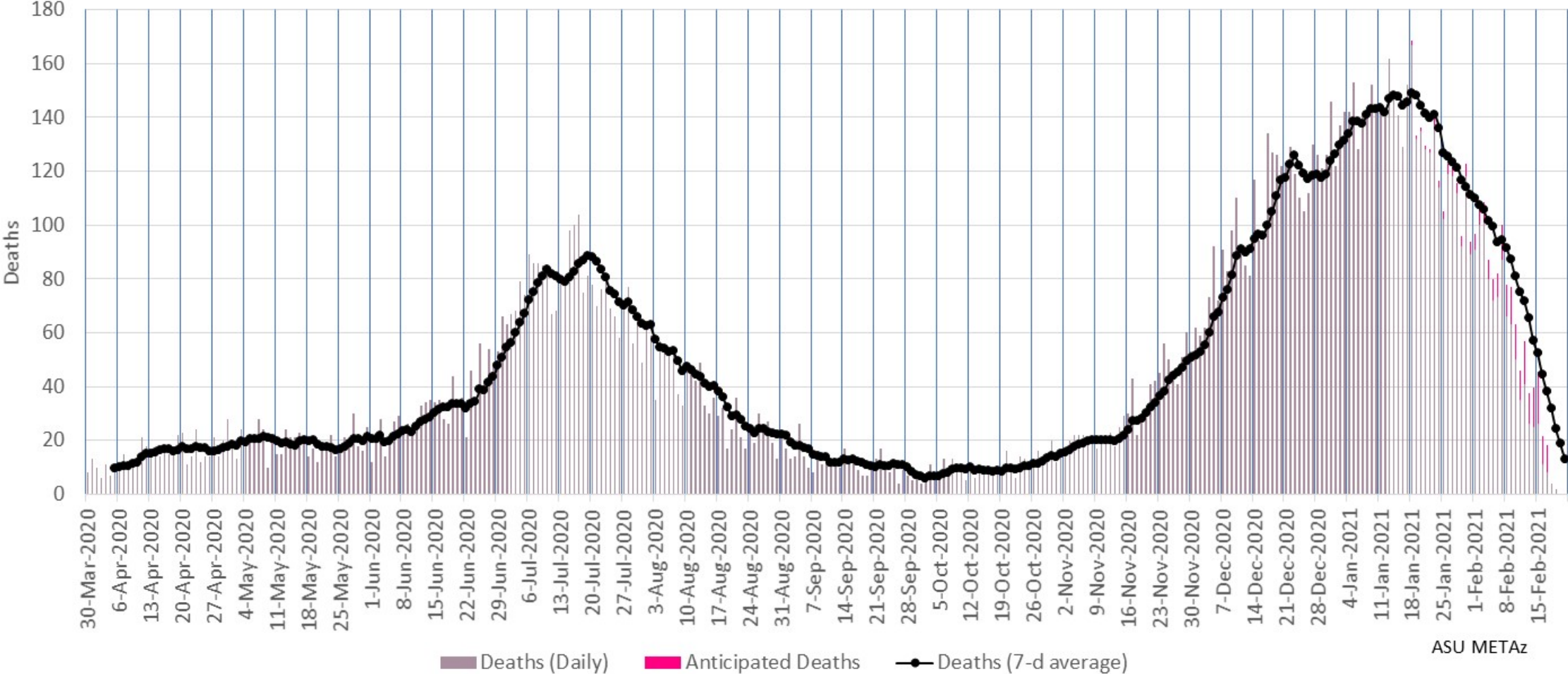


ASU METAz

Arizona Statewide Daily COVID-19 Hospitalizations by Date of Hospitalization (Epi Curve)

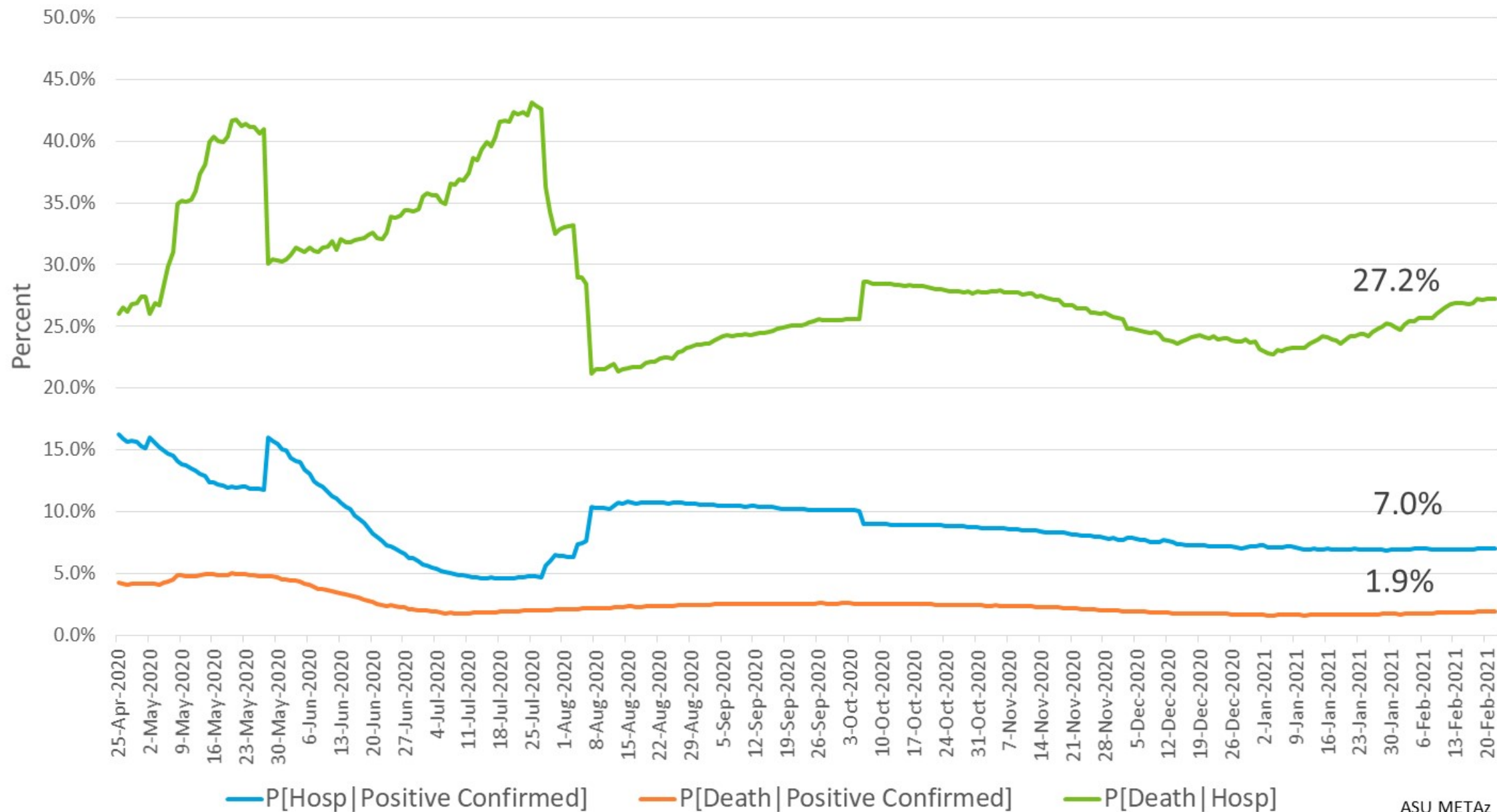


Arizona Statewide Daily COVID-19 Deaths by Date of Death (Epi Curve)



ASU METAz

Arizona Statewide Case Fatality and Hospitalization Rates

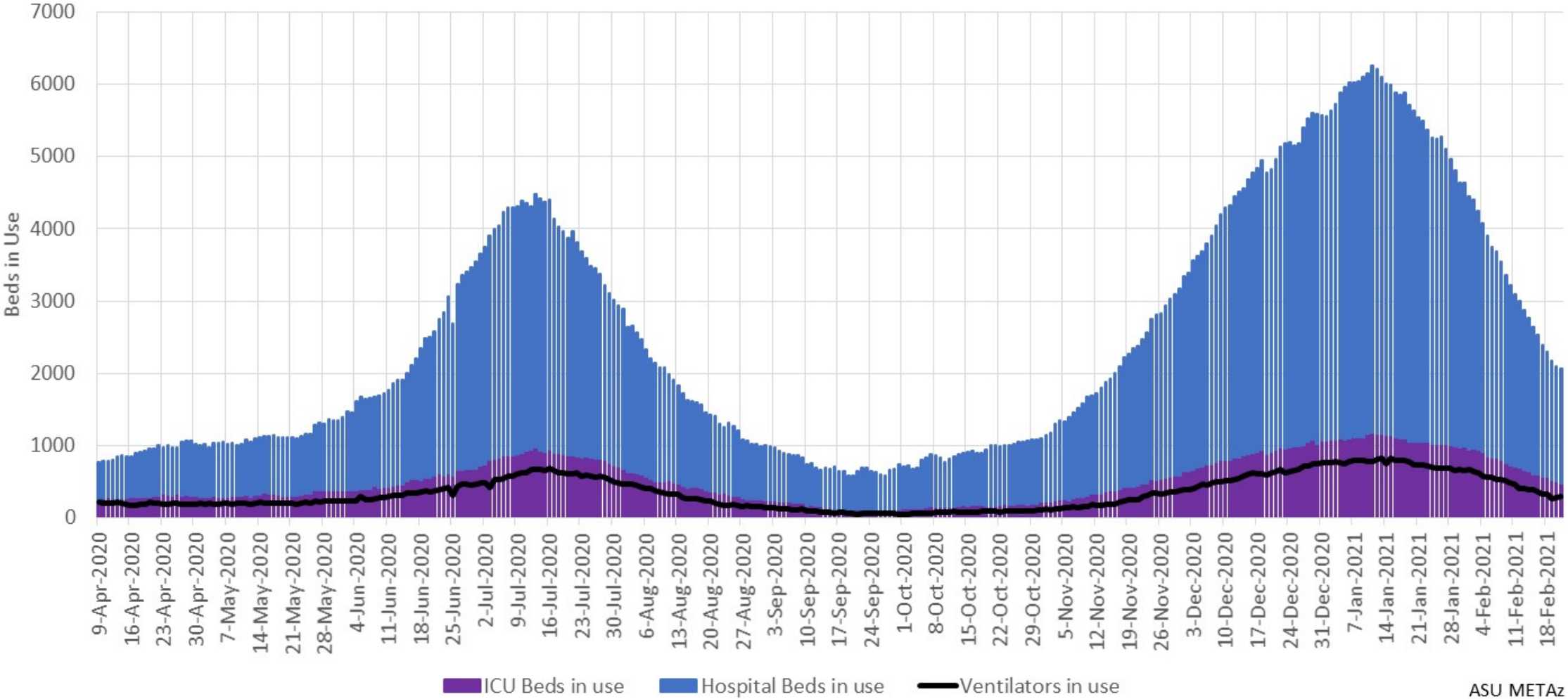


ASU METAz

Hospital Usage

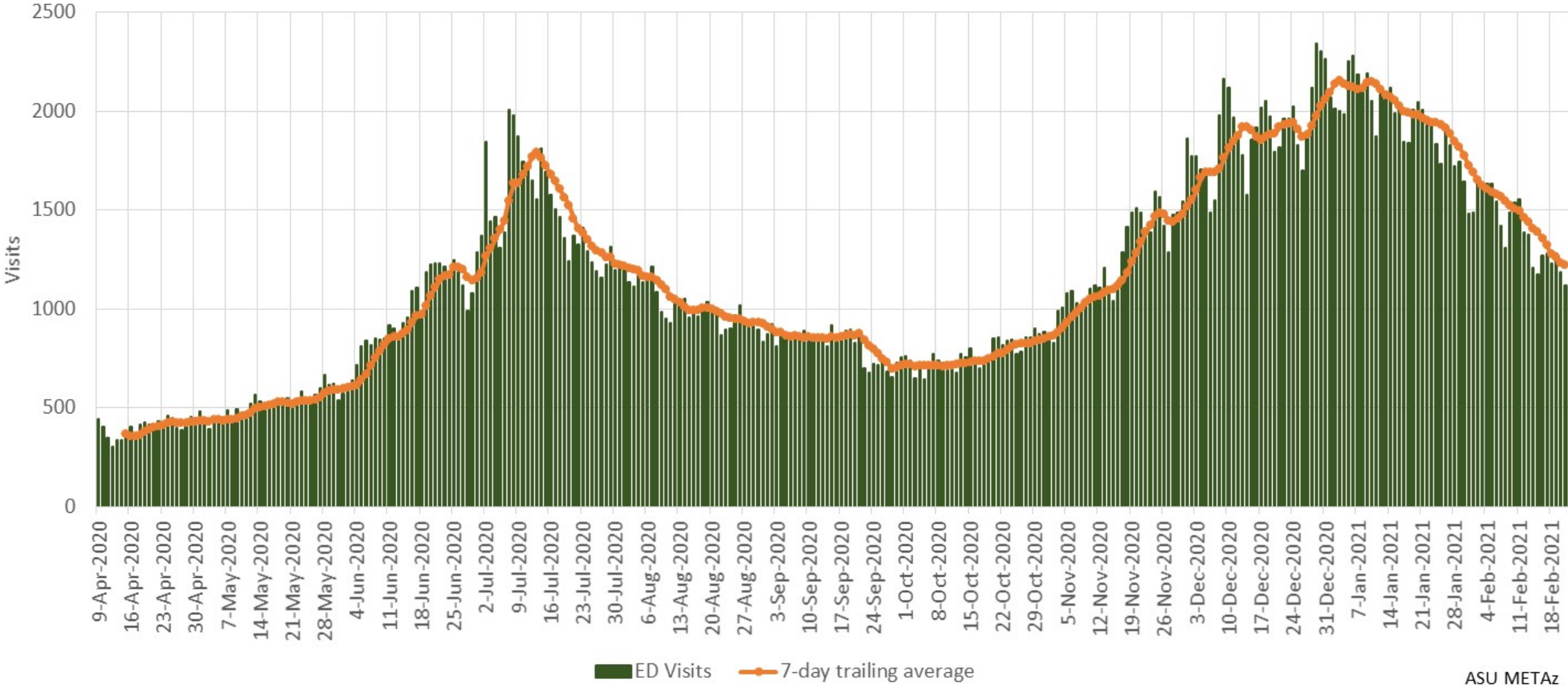


Arizona Statewide COVID-19 Hospital Resource Utilization



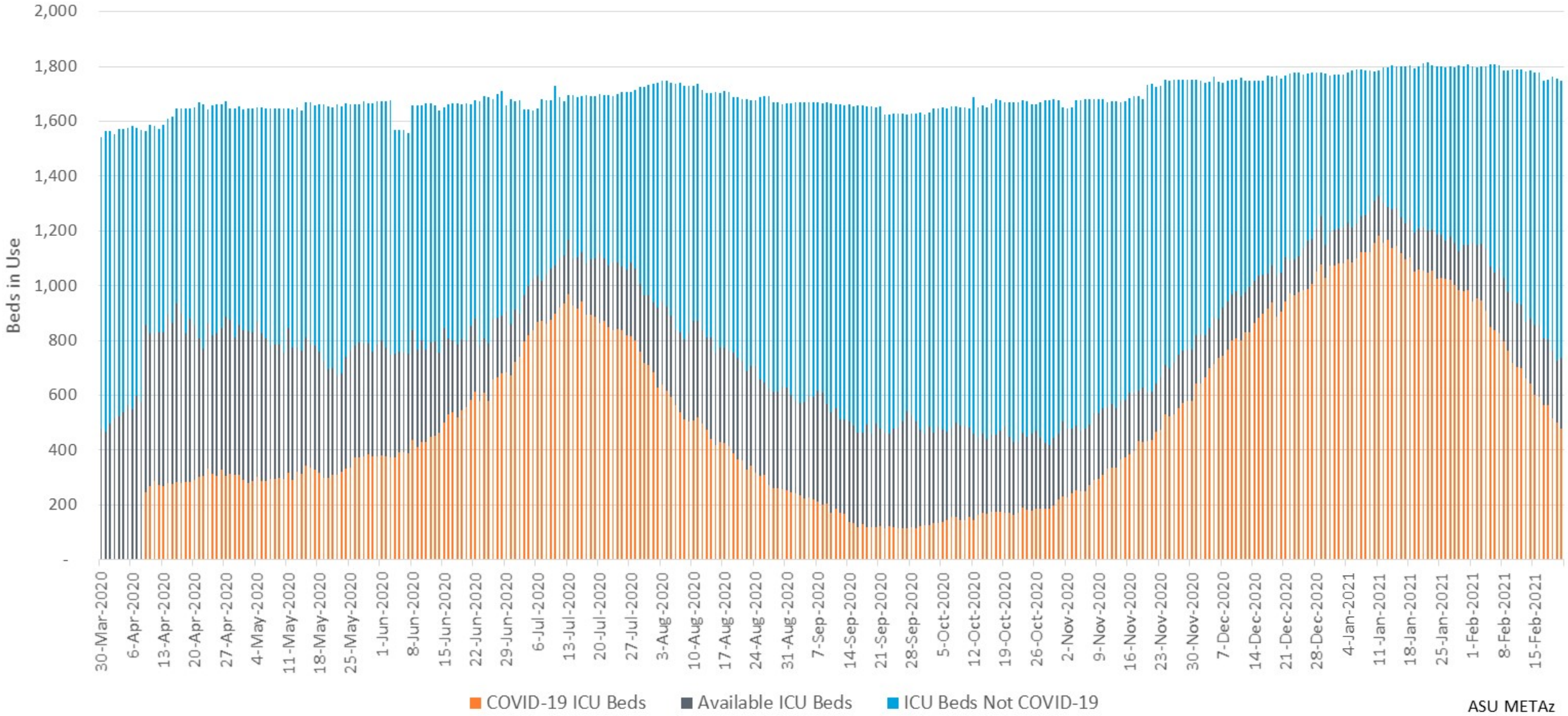
ASU METAz

Arizona Statewide COVID-19 Emergency Department Visits



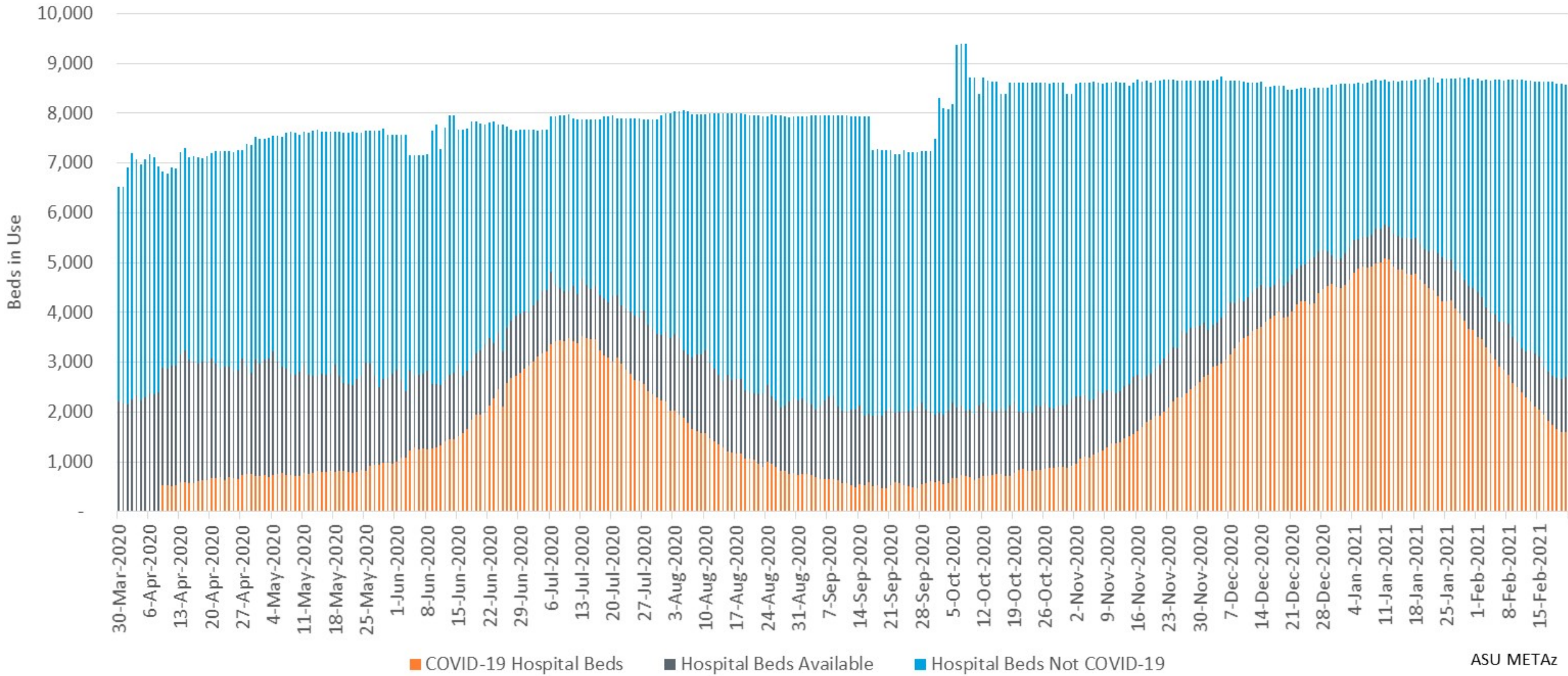
ASU METAz

Arizona Statewide ICU Bed Usage



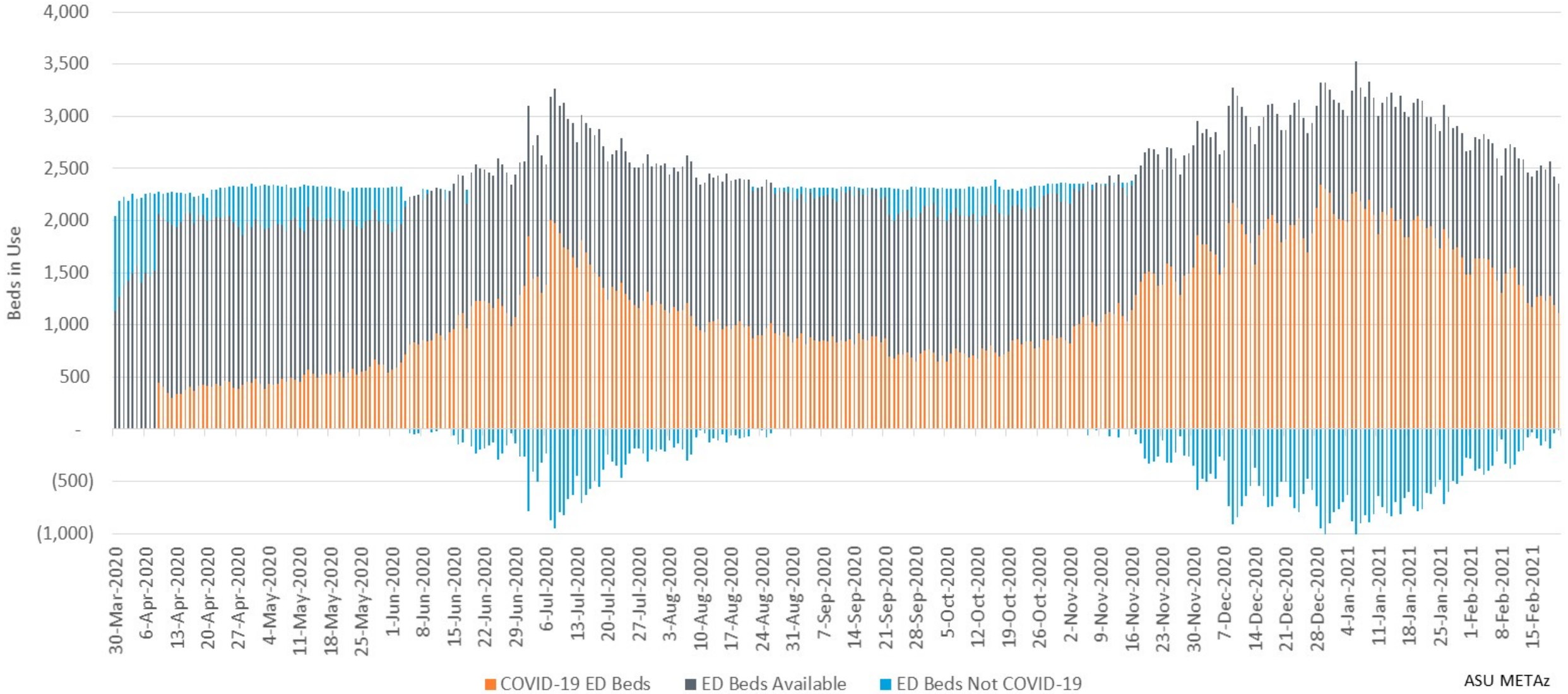
ASU METAz

Arizona Statewide Inpatient Bed Usage



ASU METaz

Arizona Statewide ED Bed Usage



ASU METAz

Where blue bars are below zero, COVID ED patients exceeded total reported ED bed usage