



# COVID Epidemiology Situation Update

Tim Lant, PhD, MAS, Heather Ross PhD, DNP, ANP-BC, Anna Muldoon, MPH, Samantha Sokol, Jordy Rodriguez, and Megan Jehn, PhD

**May 10, 2021**

# Summary

May 10, 2021				
	Statewide		Maricopa	
	Reported Today	Cumulative	Reported Today	Cumulative
<b>Cases</b>	642	869,472	517	542,072
<b>PCR Tests</b>	5,296	4,315,284	3,226	2,577,510
<b>% Positive</b>	12.1%	20.1%	16%	13.9%
<b>Hospitalizations</b>	32	60,762	28	37,509
<b>Deaths</b>	0	17,409	0	9,922
<i>All data pulled from azdhs.gov. Numbers may not match Maricopa county data.</i>				

- Today's reported statewide case count is 642 with 517 cases in Maricopa County (80%), higher than the proportion of the population in the county. (Monday reporting generally skews toward Maricopa County due to weekend work patterns in different public health departments.)
- The 7-day average for reported cases has fallen slightly and is now 699.
- 7-day average percent positive is now 9.9% and has been hovering between 9-12% since April 1.
- COVID utilization is on a slightly increasing trend for ICU beds and a decreasing trend for non-ICU inpatient beds. ED bed utilization is showing a slight decline.
- Bed usage for COVID-19 is 7% of inpatient beds and 11% of ICU beds statewide. Current hospital utilization is 87% for inpatient beds and 84% for ICU beds including COVID and non-COVID utilization.
- COVID-19 remains the leading cause of death in Arizona in a 12-month period. The state does not report deaths on Mondays.

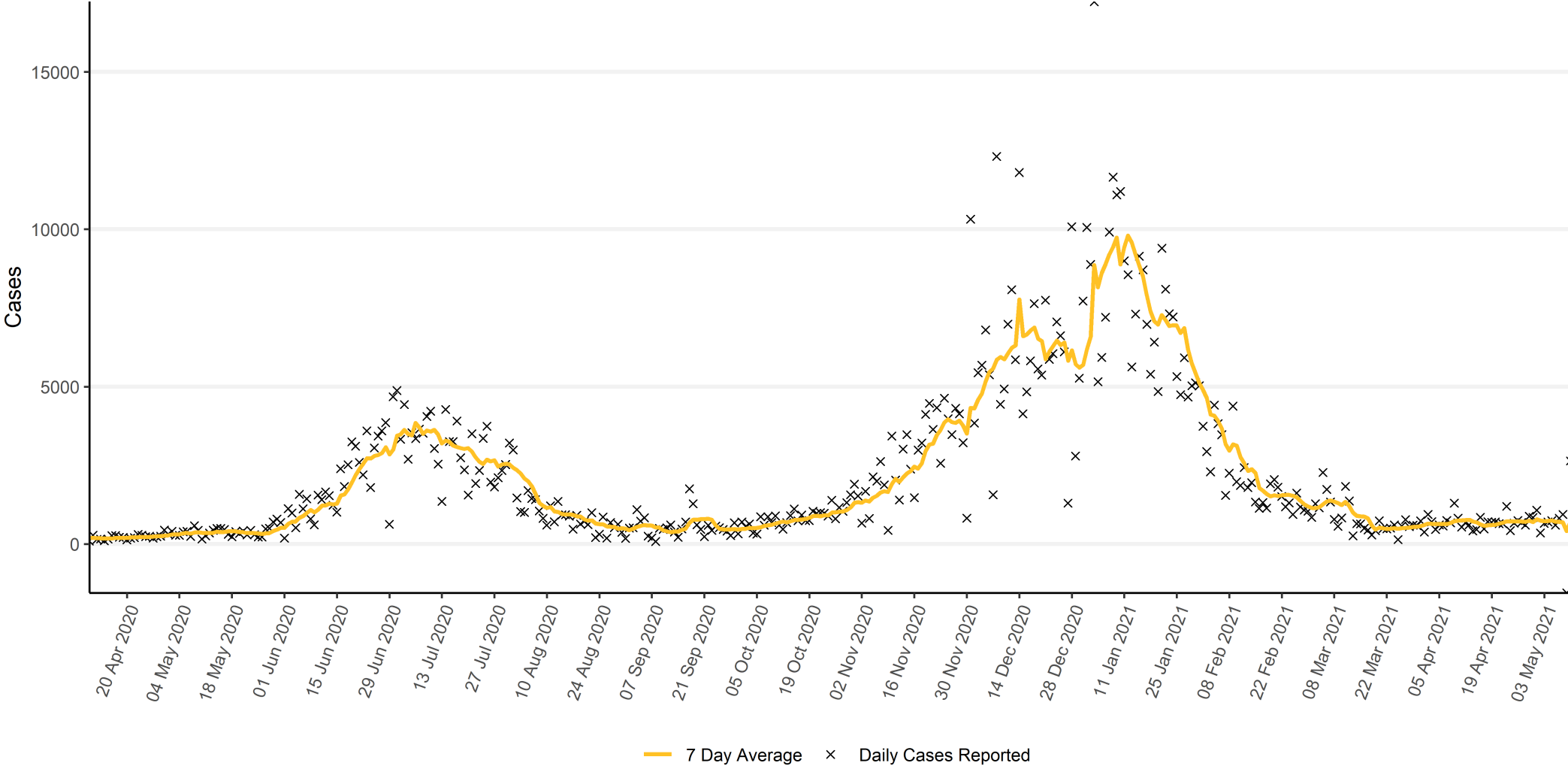
# Arizona Statewide Analysis



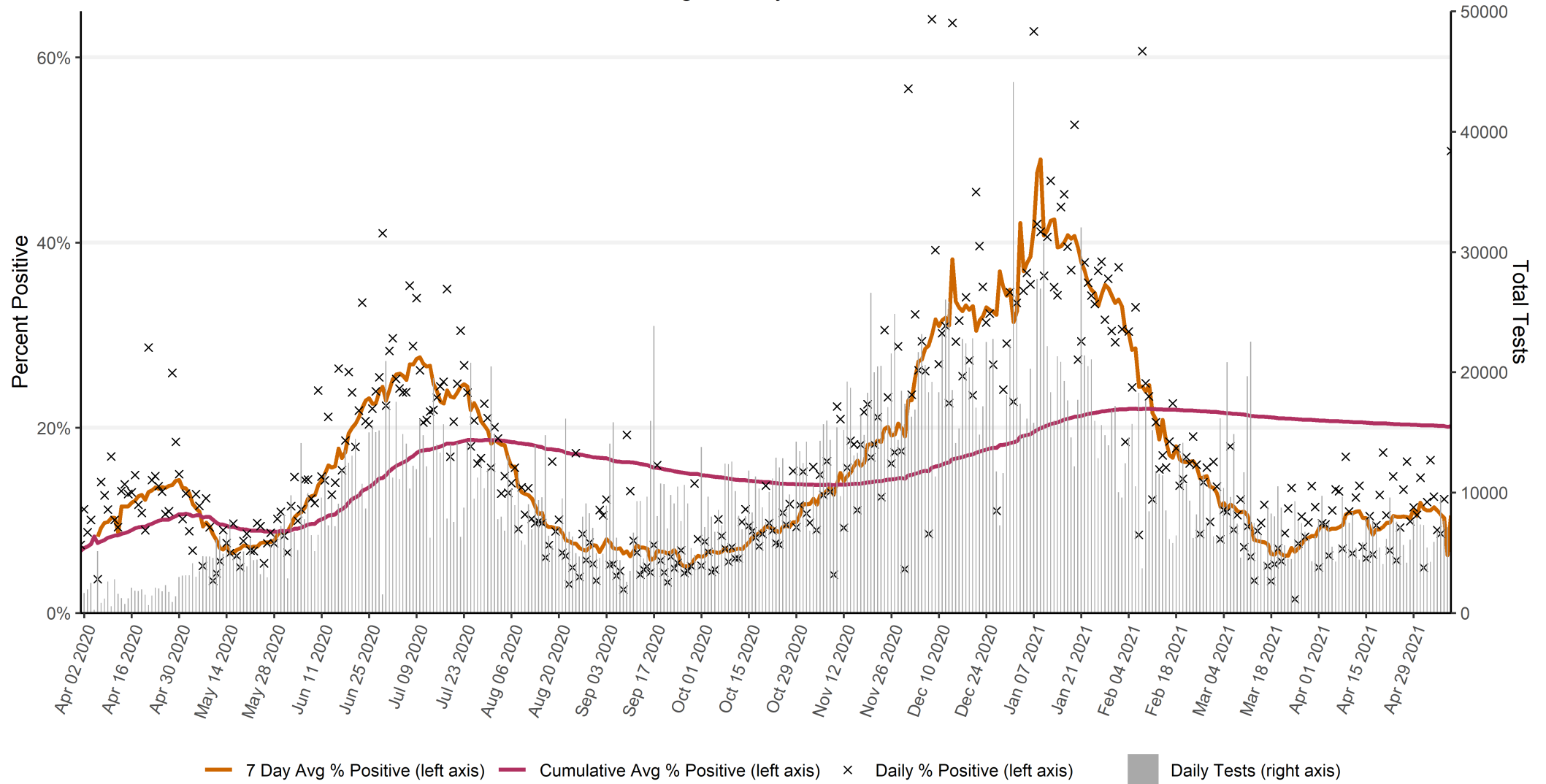
# Epidemiology



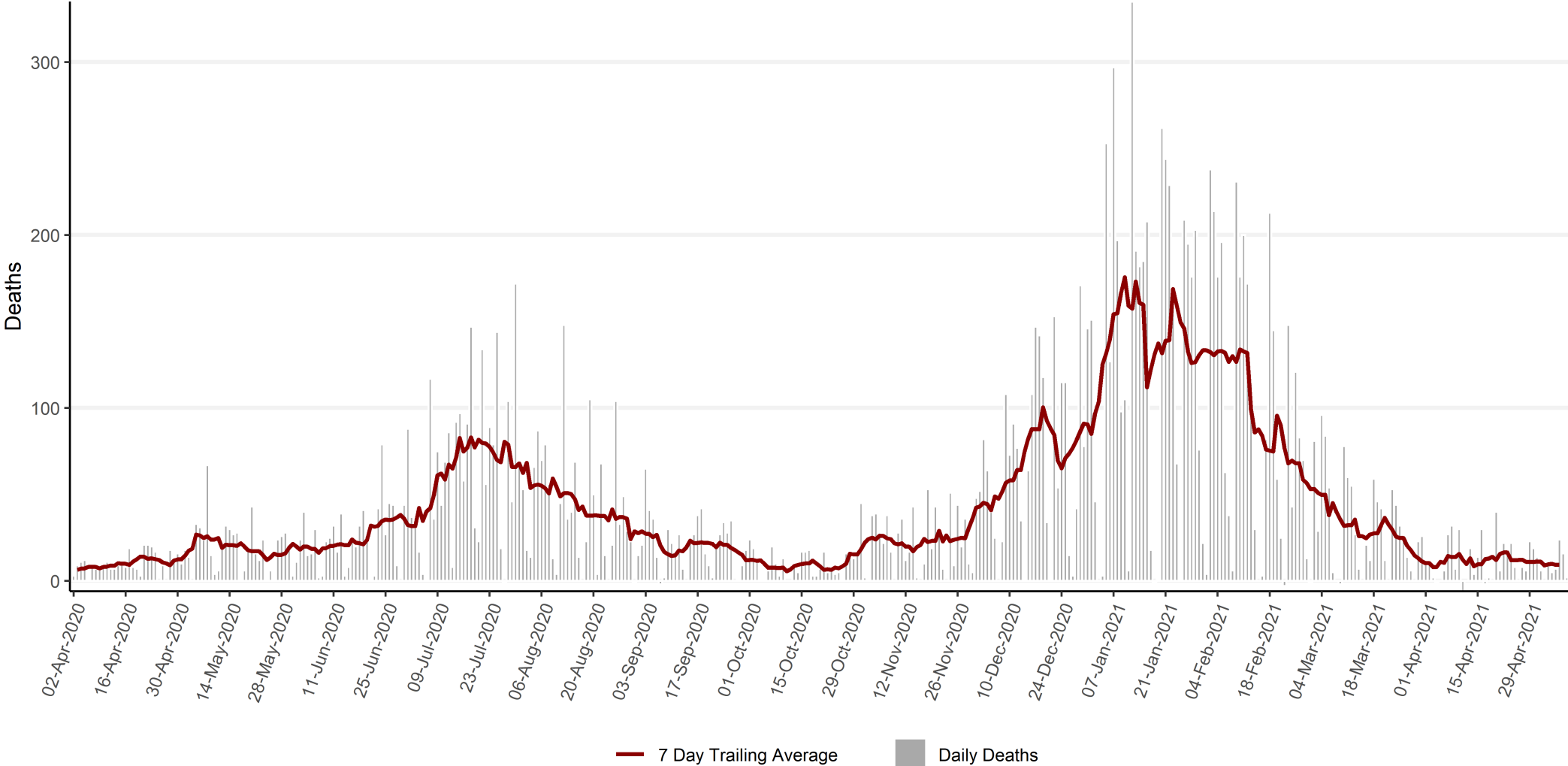
# Arizona Statewide Daily COVID-19 Positive Tests Results Reported (confirmed incidence)



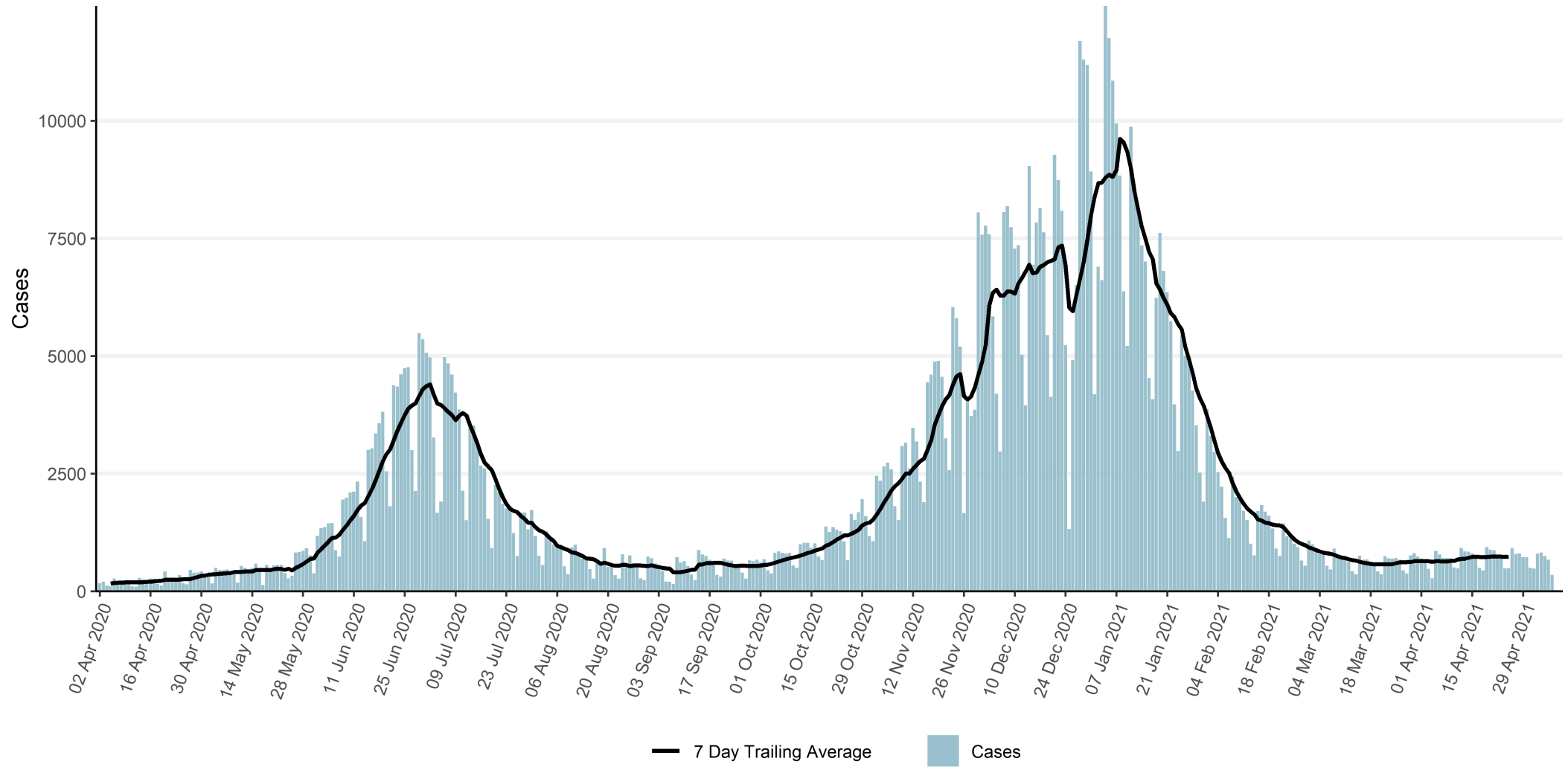
# Arizona Statewide Rolling Weekly Positive COVID-19 Test Rate



# Arizona Statewide Daily COVID-19 Deaths (by date of reporting)

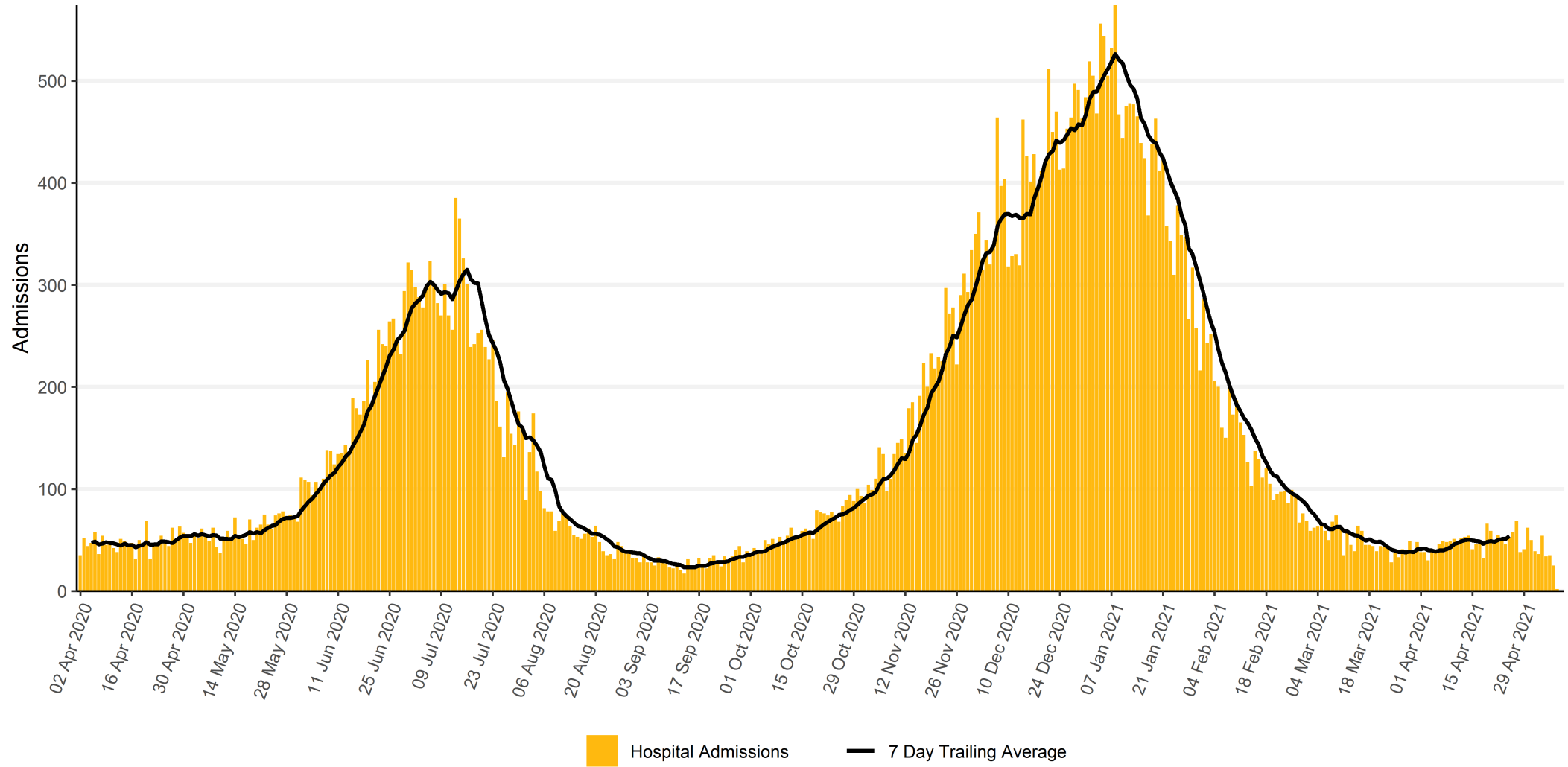


# Arizona Statewide Daily COVID-19 Cases by Date of Sample Collection (Epi Curve)

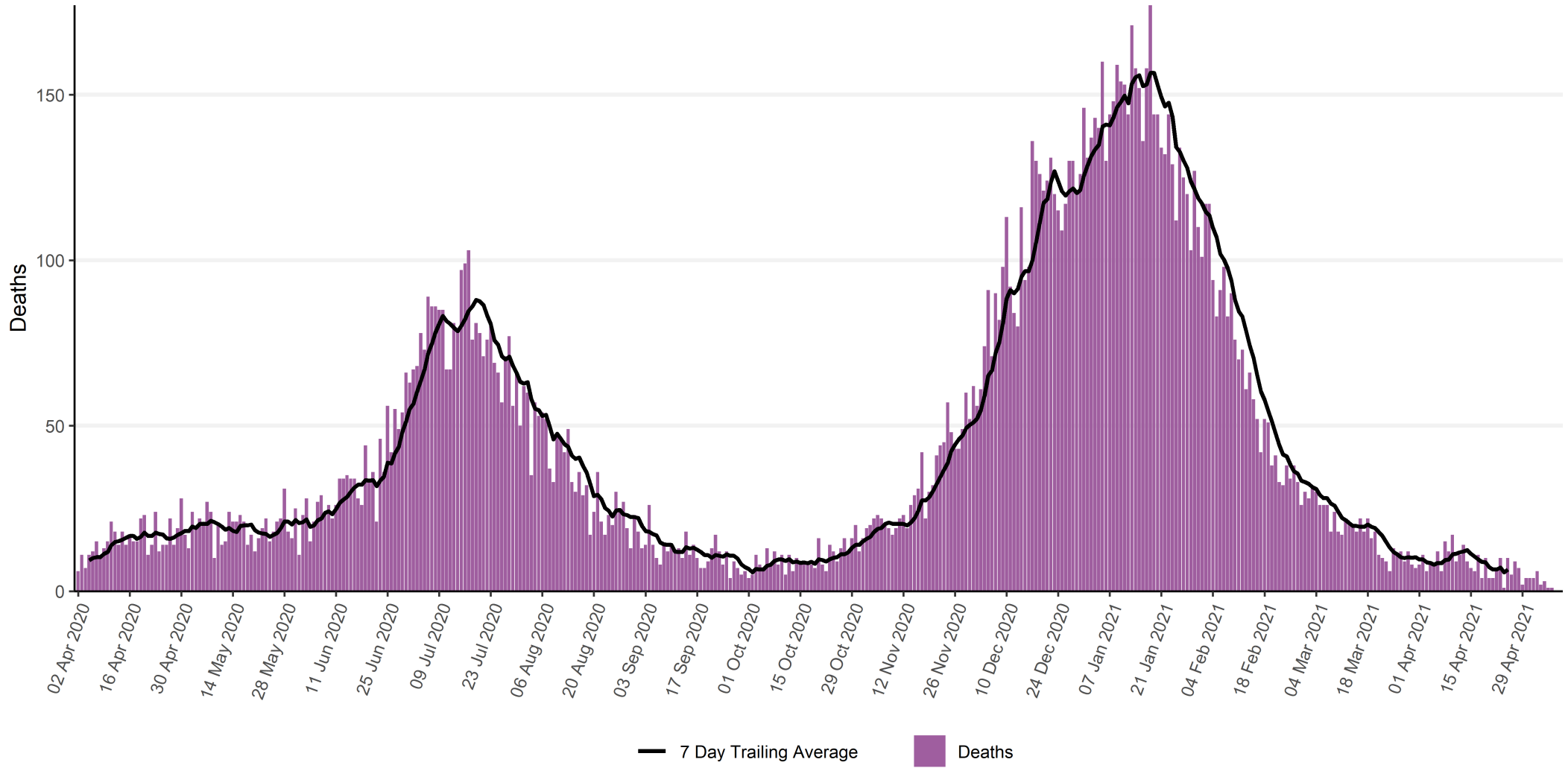




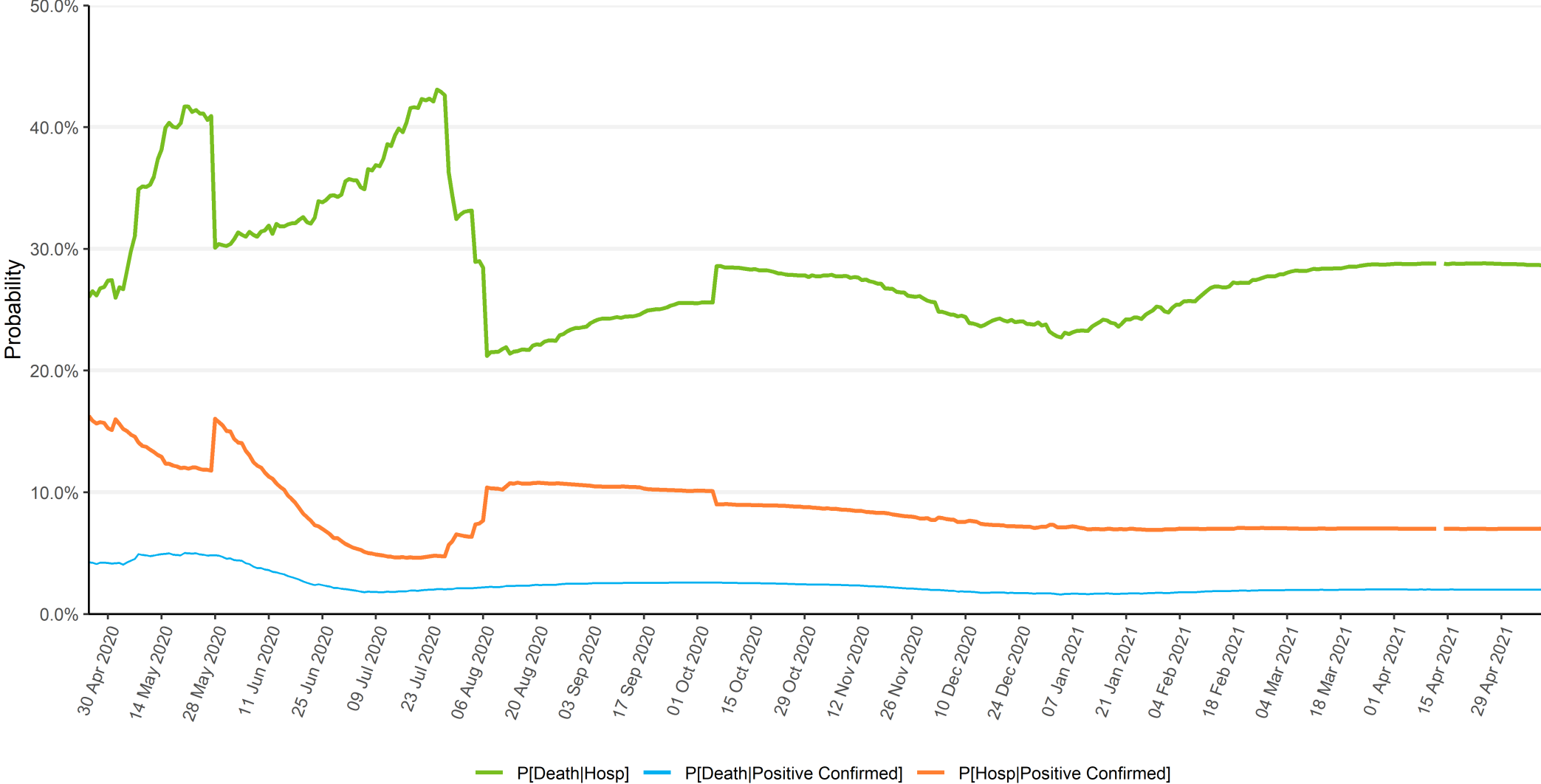
# Arizona Statewide Daily COVID-19 Hospitalizations by Date of Hospitalization (Epi Curve)



# Arizona Statewide Daily COVID-19 Deaths by Date of Death (Epi Curve)



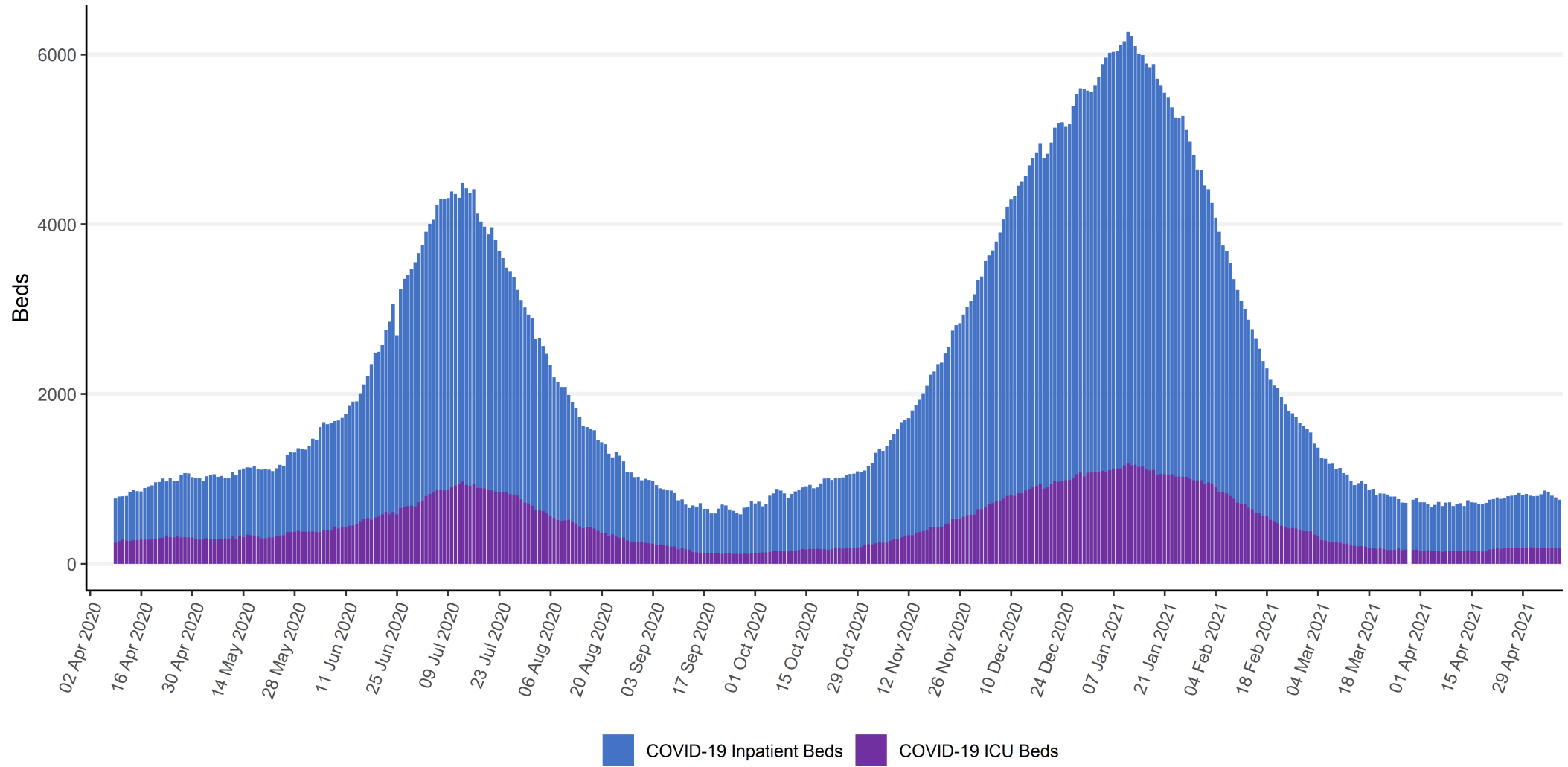
# Arizona Statewide Case Fatality and Hospitalization Rates



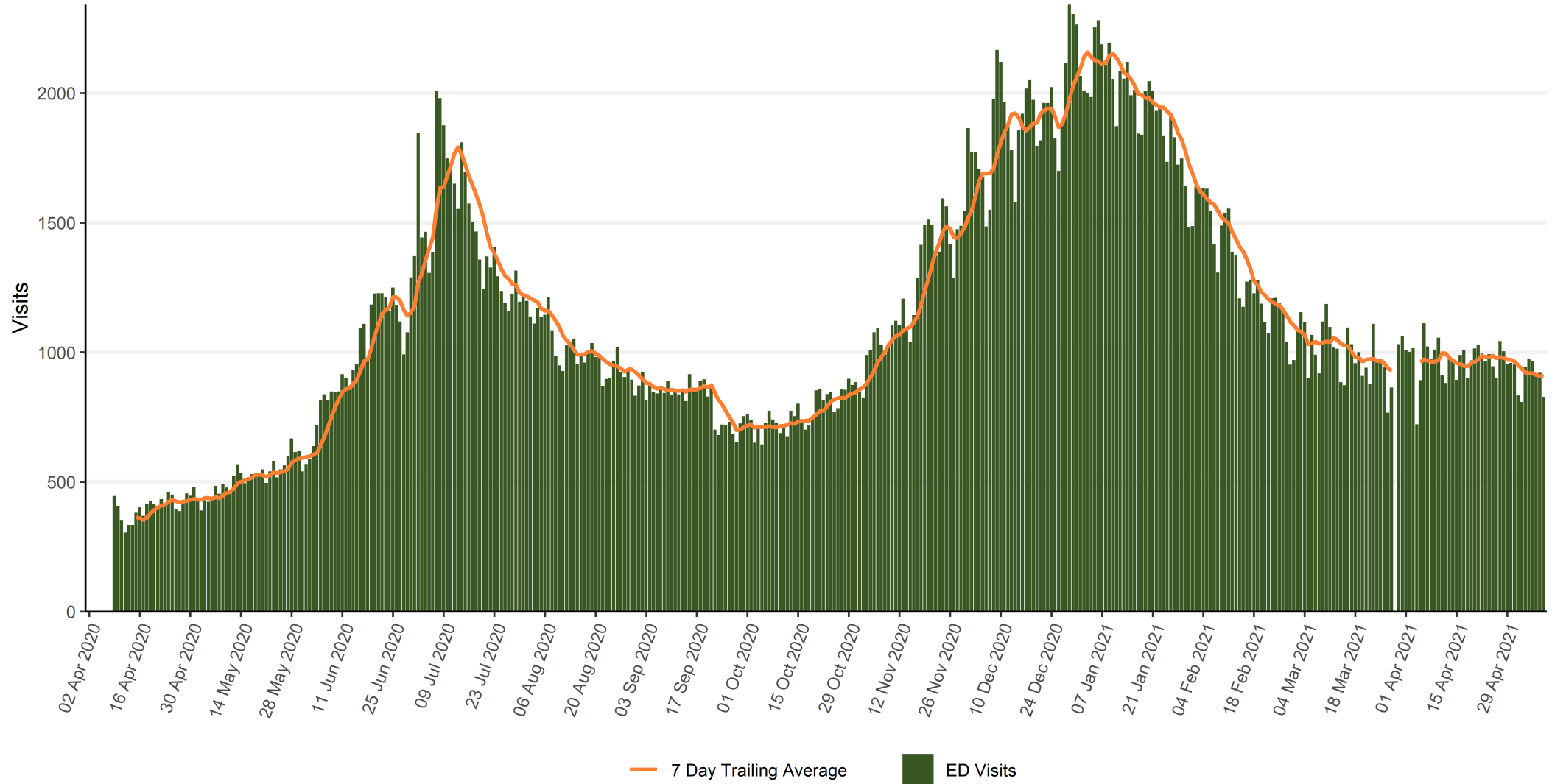
# Hospital Usage



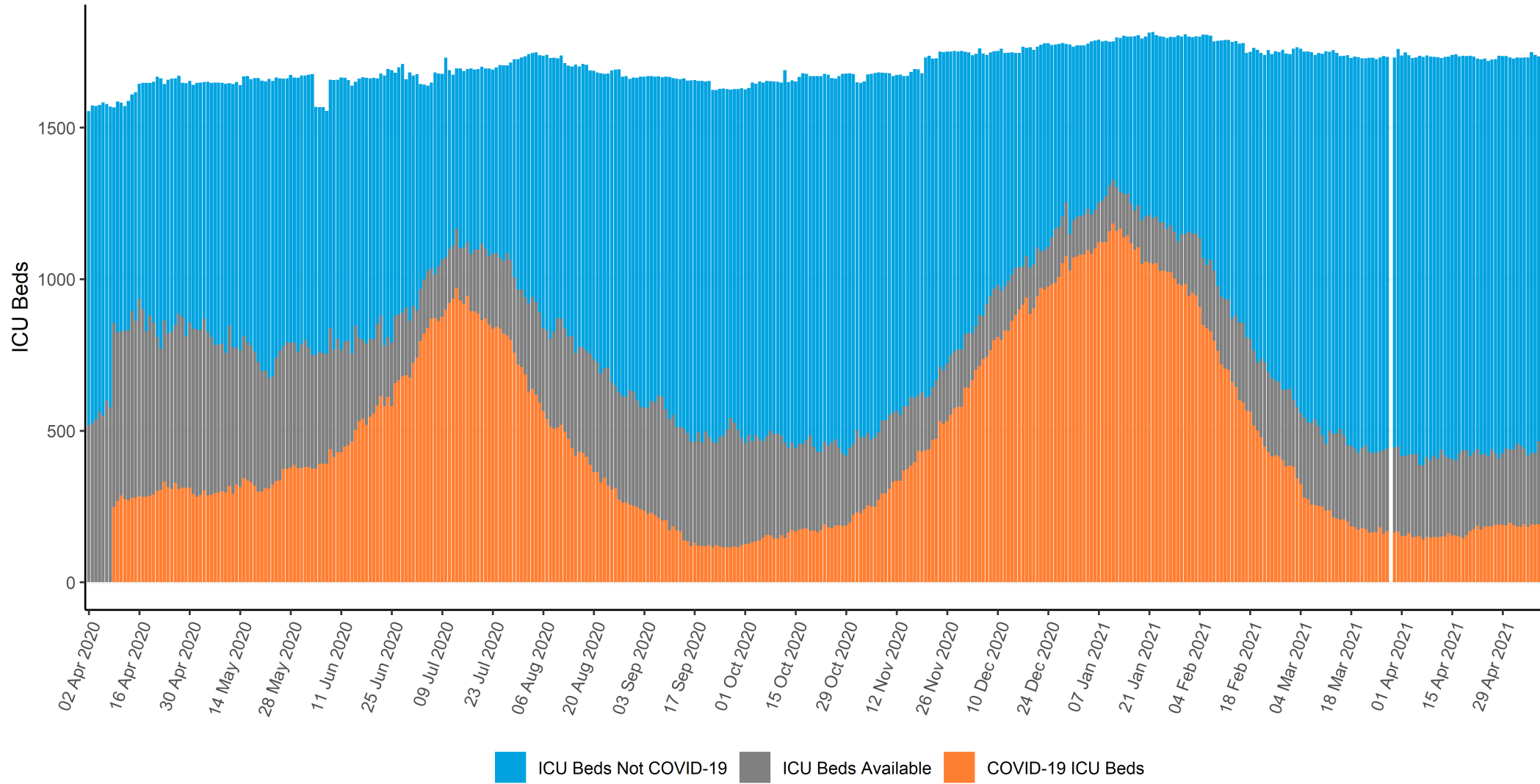
# Arizona Statewide COVID-19 Hospital Resource Utilization



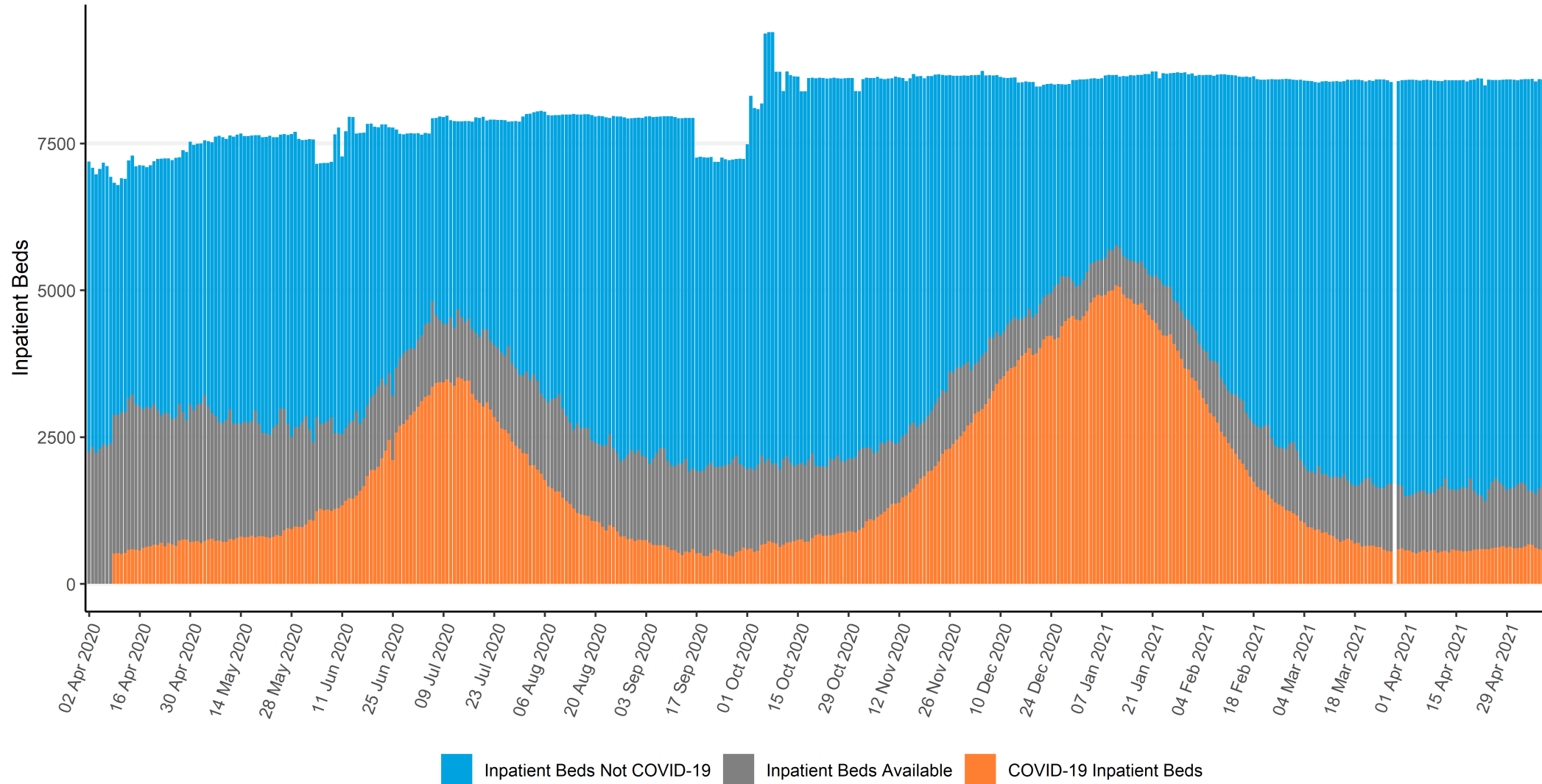
# Arizona Statewide COVID-19 Emergency Department Visits



# Arizona Statewide ICU Bed Usage - COVID-19

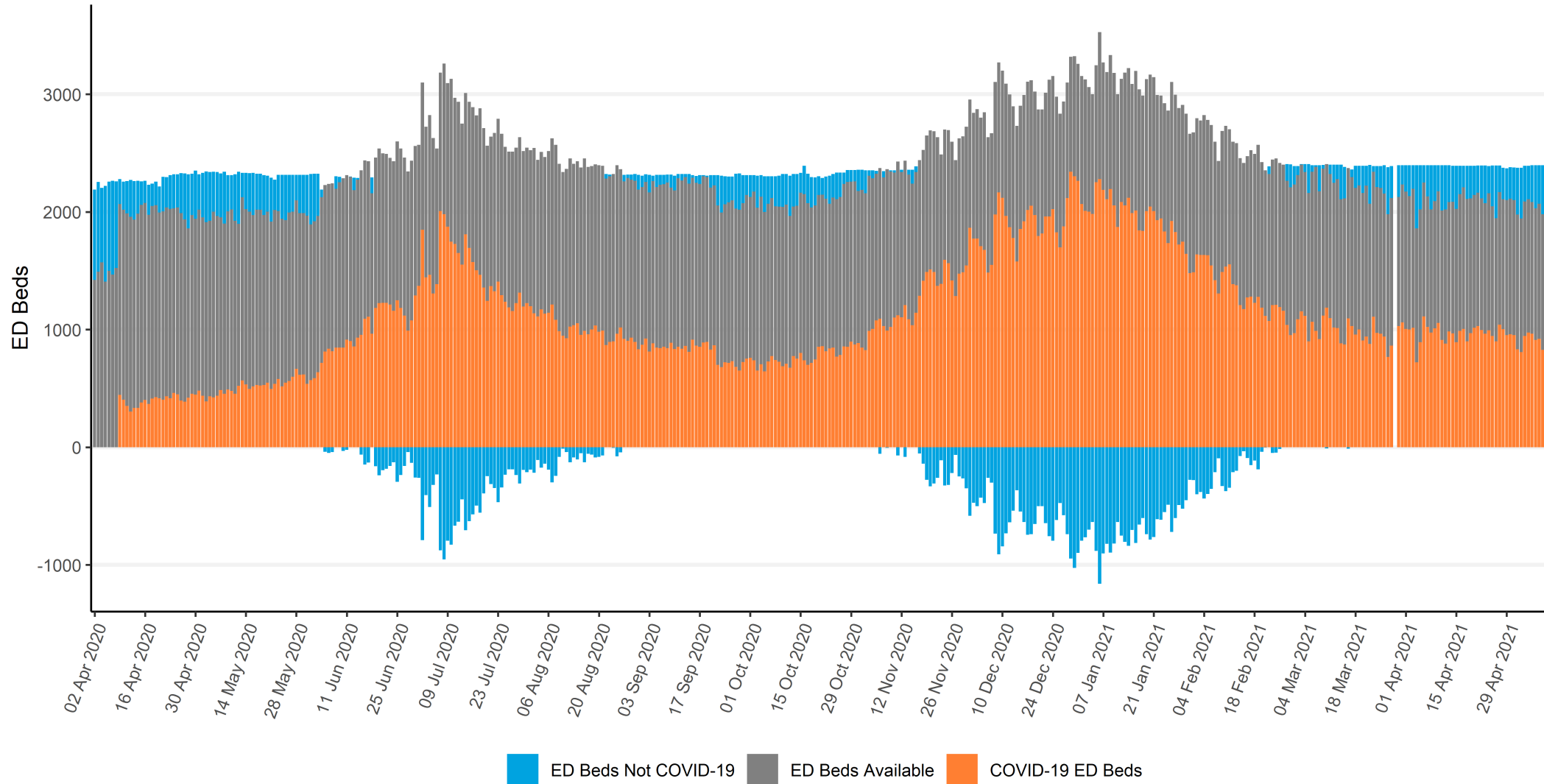


# Arizona Statewide Inpatient Bed Usage - COVID-19





# Arizona Statewide Emergency Department Bed Usage - COVID-19



Where blue bars are below zero, COVID ED patients exceeded total reported ED bed usage