



# COVID Epidemiology Situation Update

Tim Lant, PhD, MAS, Heather Ross PhD, DNP, ANP-BC, Anna Muldoon, MPH, Samantha Sokol, Jordy Rodriguez, Esma Gel, PhD, and Megan Jehn, PhD

**March 8, 2021**

# Summary

March 8, 2021				
	Statewide		Maricopa	
	Reported Today	Cumulative	Reported Today	Cumulative
<b>Cases</b>	783	827,237	504	516,720
<b>PCR Tests</b>	7,403	3,850,348	4,310	2,312,624
<b>% Positive</b>	10.6%	21.5%	11.7%	14.8%
<b>Hospitalizations</b>	18	57,925	15	35,928
<b>Deaths</b>	0	16,328	0	9,316
<i>All data pulled from azdhs.gov. Numbers may not match Maricopa county data.</i>				

- Today's statewide case count is 738 with 504 cases (68%) in Maricopa County, higher than population distribution. The 7-day average for reported cases has risen for the first time in several weeks to 1,345, similar to early November in the early phases of the most recent surge.
- Peak cases by incident date remains 1/4.
- 7-day average positivity continues to trend downward and has now dropped below 15% for more than a week.
- Hospital utilization continues to decline slowly and is now at rates similar to early November for ICU and non-ICU beds.
- Bed usage for COVID-19 is 11% of inpatient beds and 15% of ICU beds statewide. Current hospital utilization is 89% for inpatient beds and 85% for ICU beds including COVID and non-COVID utilization.
- Despite declining hospital utilization, hospital death rates for COVID-19 continue to increase, indicating the higher acuity of patients admitted to the hospital compared to earlier in the pandemic.
- COVID-19 remains the leading cause of death in Arizona in a 12-month period. Death numbers are generally not updated on Mondays due to health department staff work schedules.

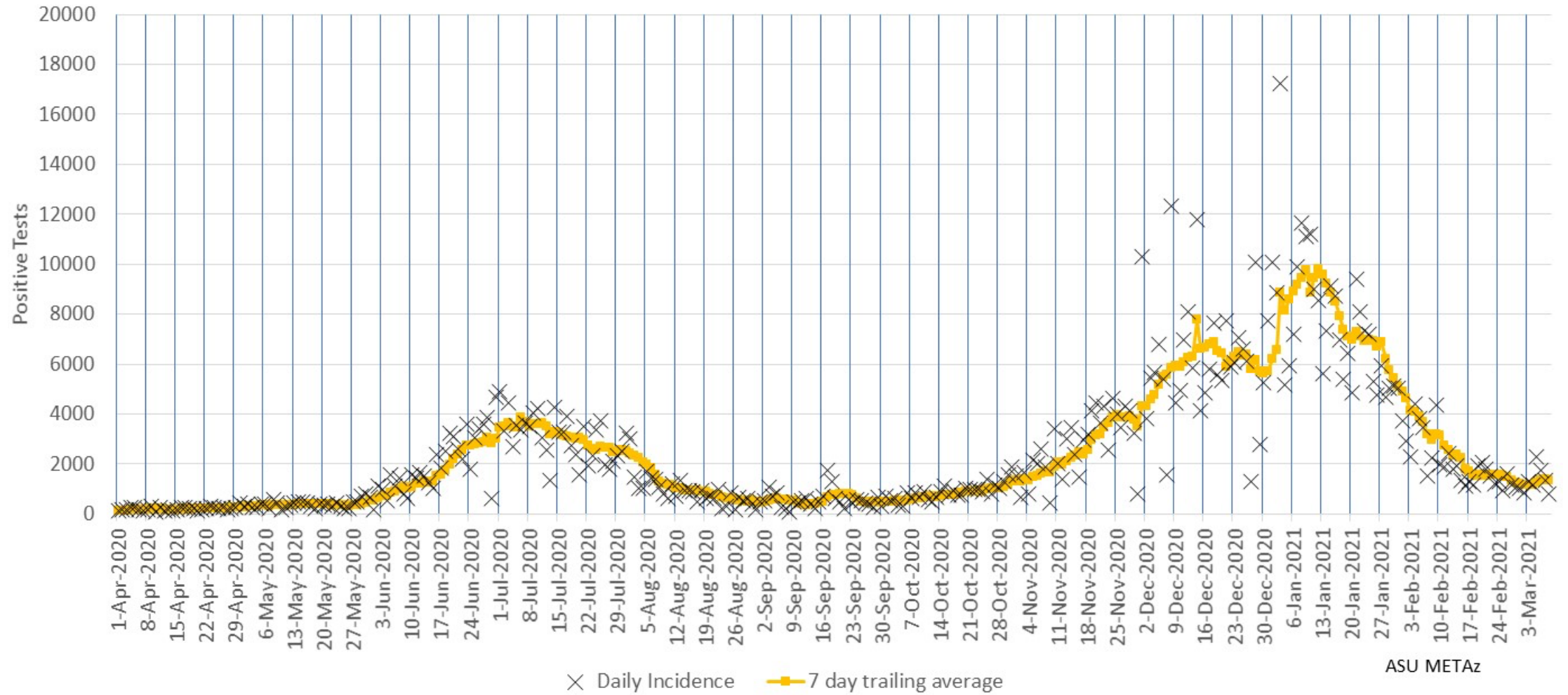
# Arizona Statewide Analysis



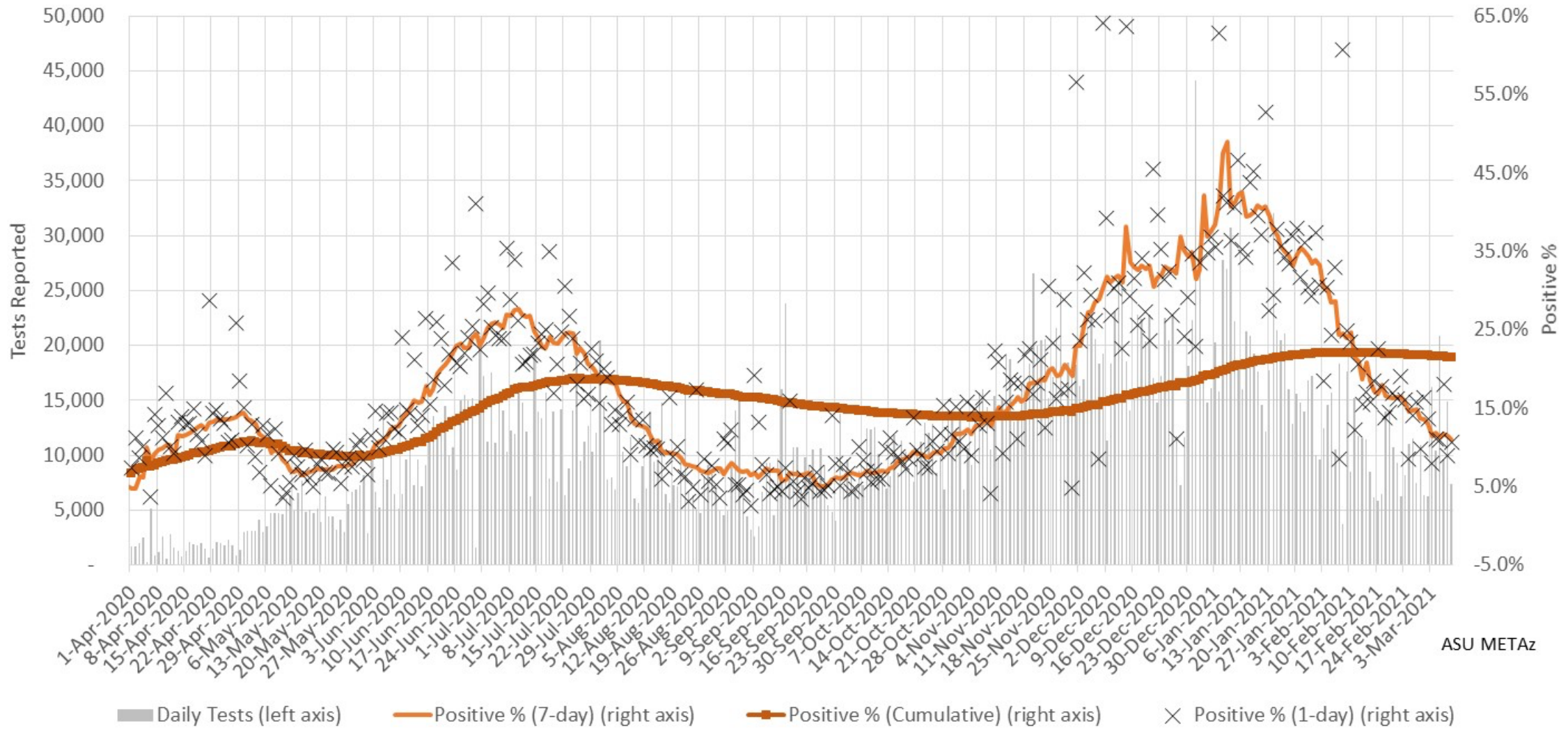
# Epidemiology



### Arizona Statewide Daily COVID-19 Positive Tests Results Reported (confirmed incidence)



### Arizona Statewide Rolling weekly positive COVID-19 test rate



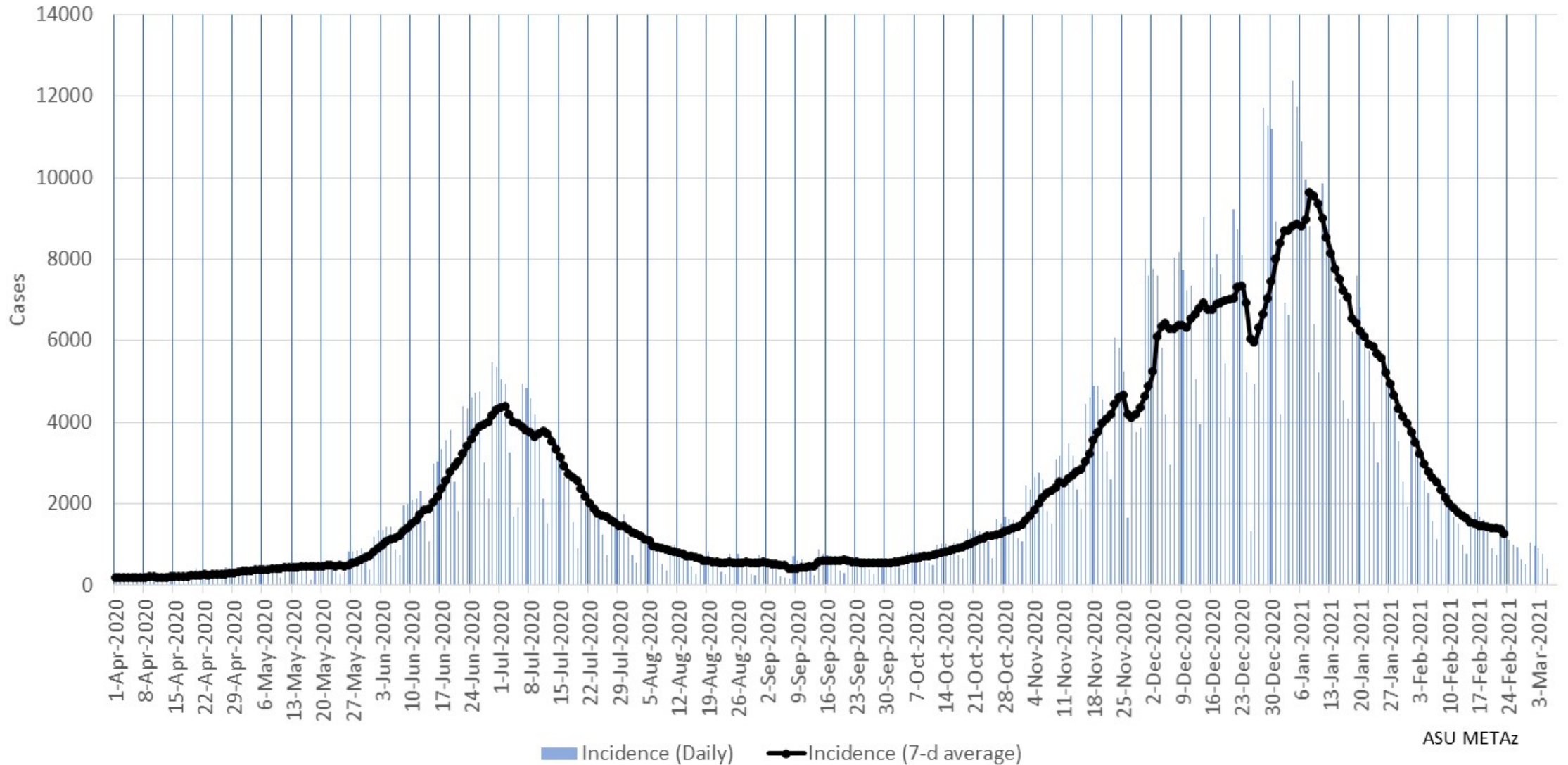
ASU METAz

### Arizona Statewide Daily COVID-19 Deaths (by date of reporting)



ASU METAz

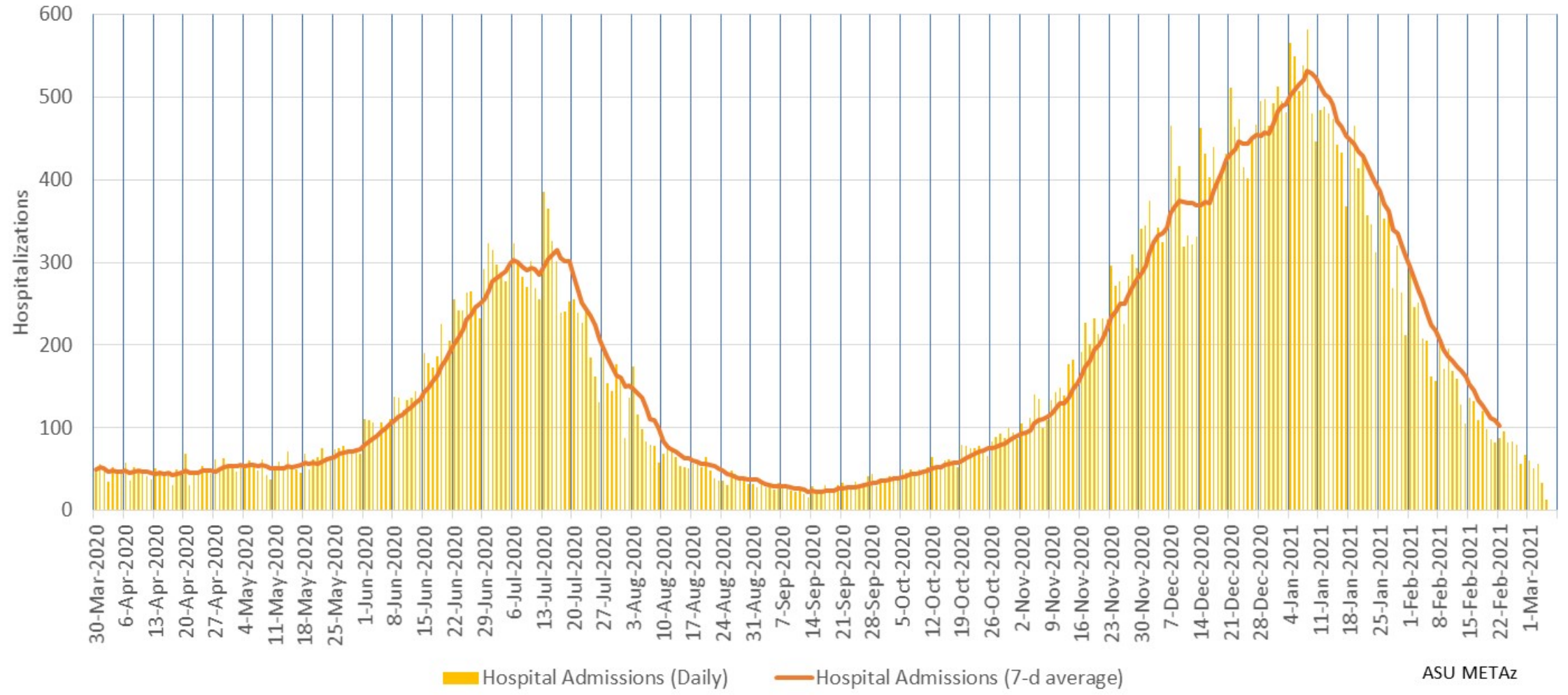
### Arizona Statewide Daily COVID-19 Cases by Date of Sample Collection (Epi Curve)



ASU METAz

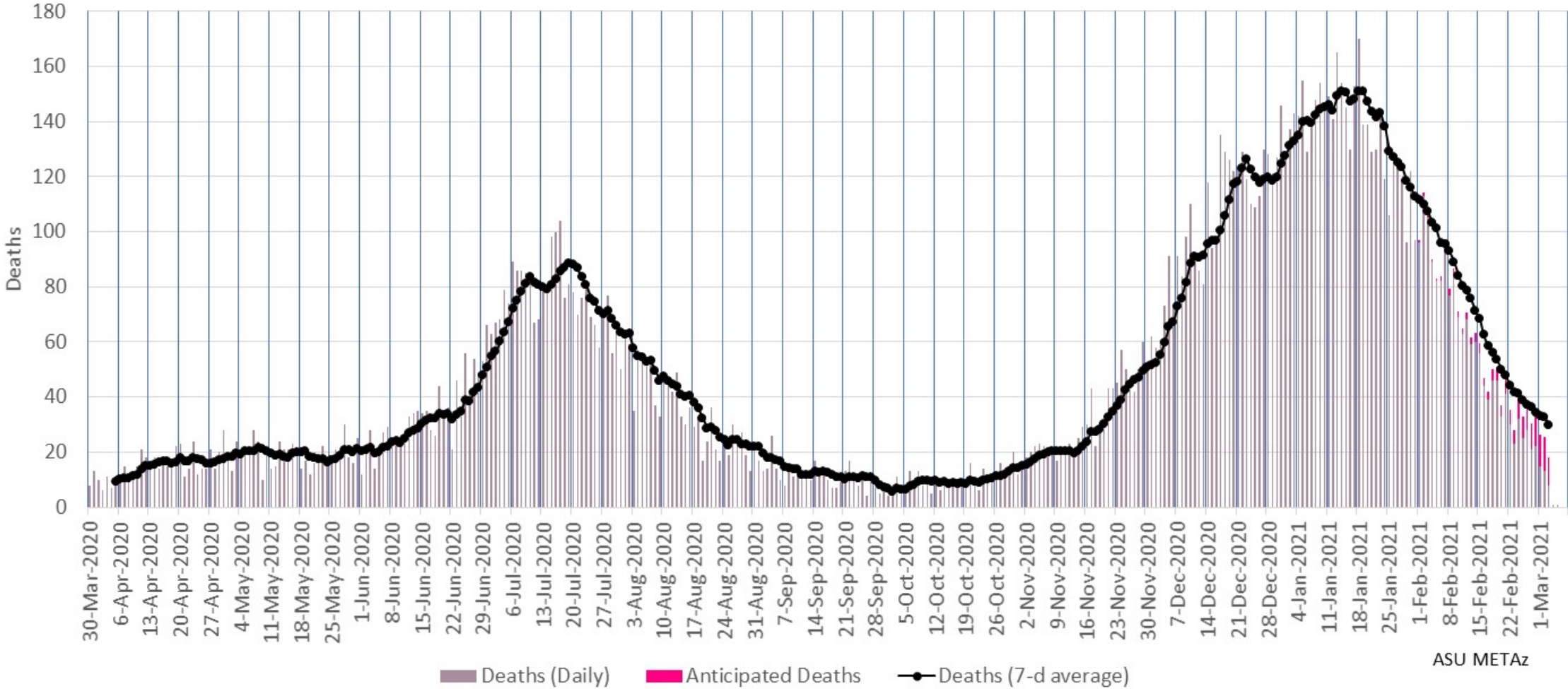


### Arizona Statewide Daily COVID-19 Hospitalizations by Date of Hospitalization (Epi Curve)



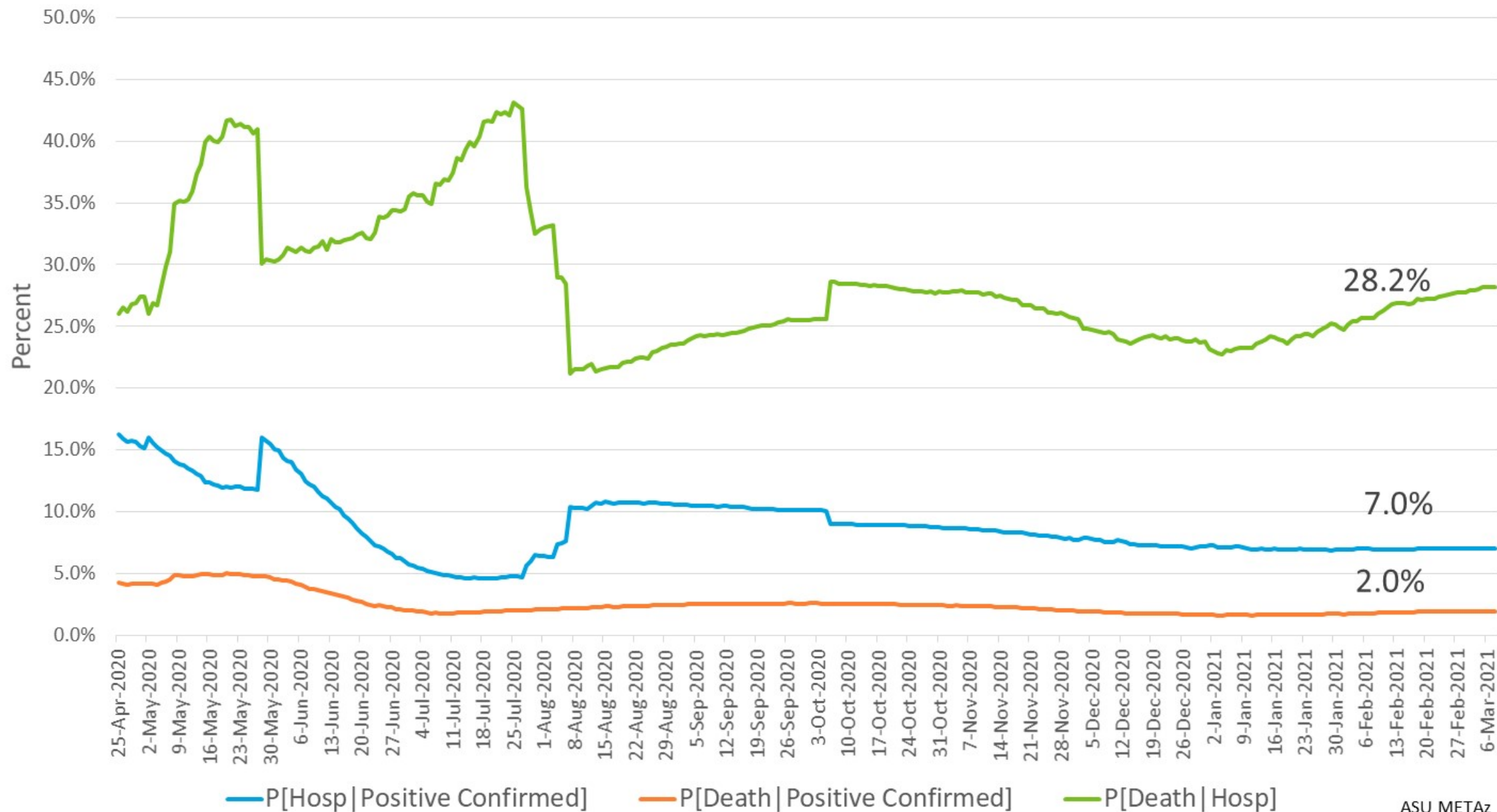
ASU METaz

### Arizona Statewide Daily COVID-19 Deaths by Date of Death (Epi Curve)



ASU METAz

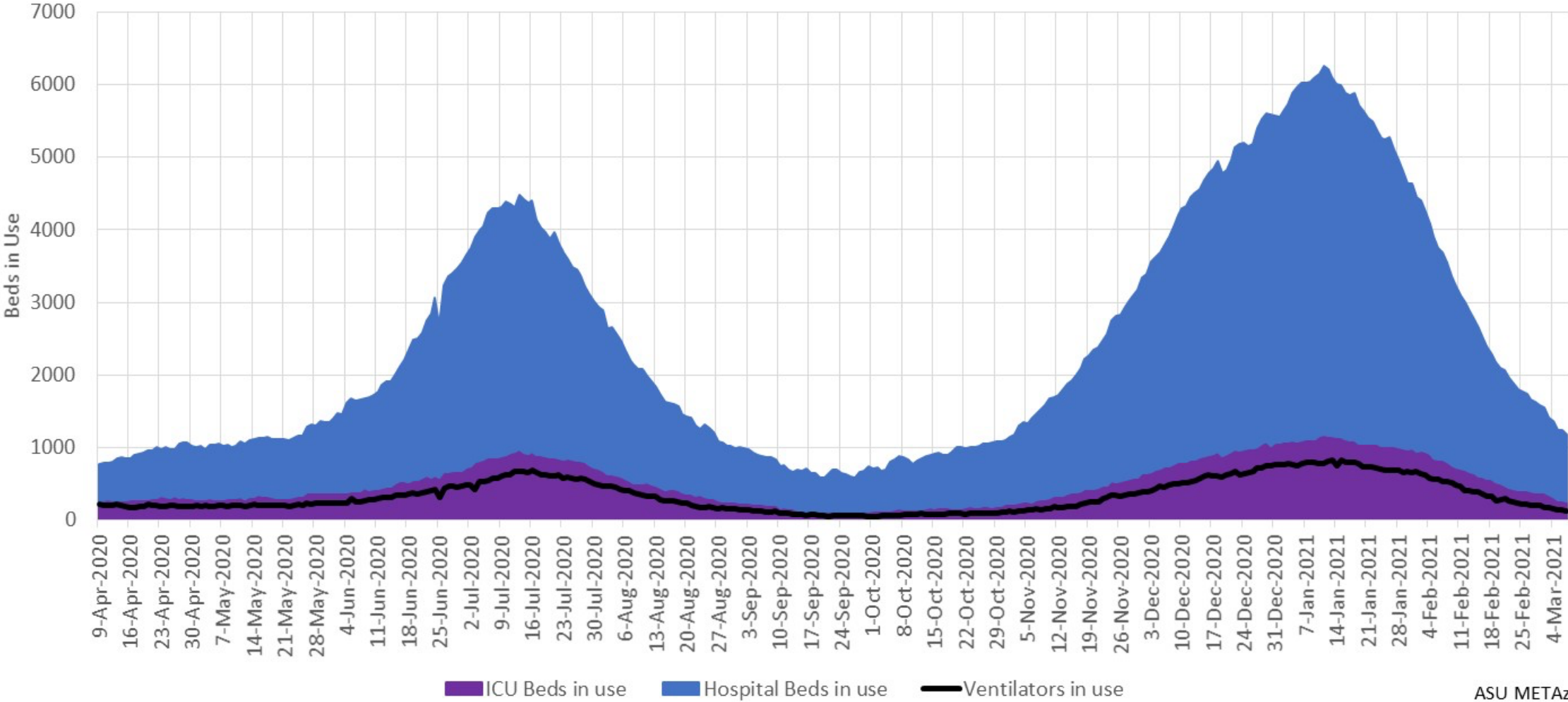
# Arizona Statewide Case Fatality and Hospitalization Rates



# Hospital Usage

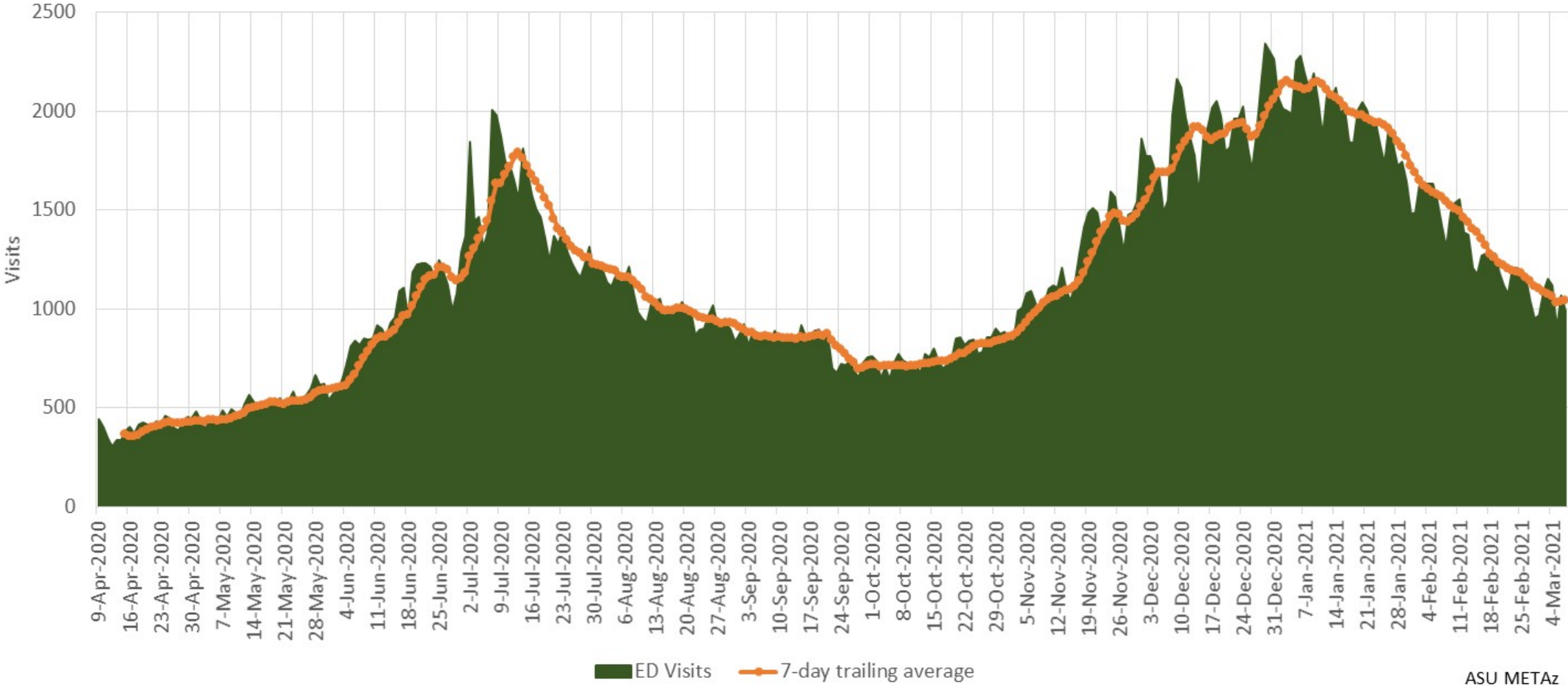


# Arizona Statewide COVID-19 Hospital Resource Utilization



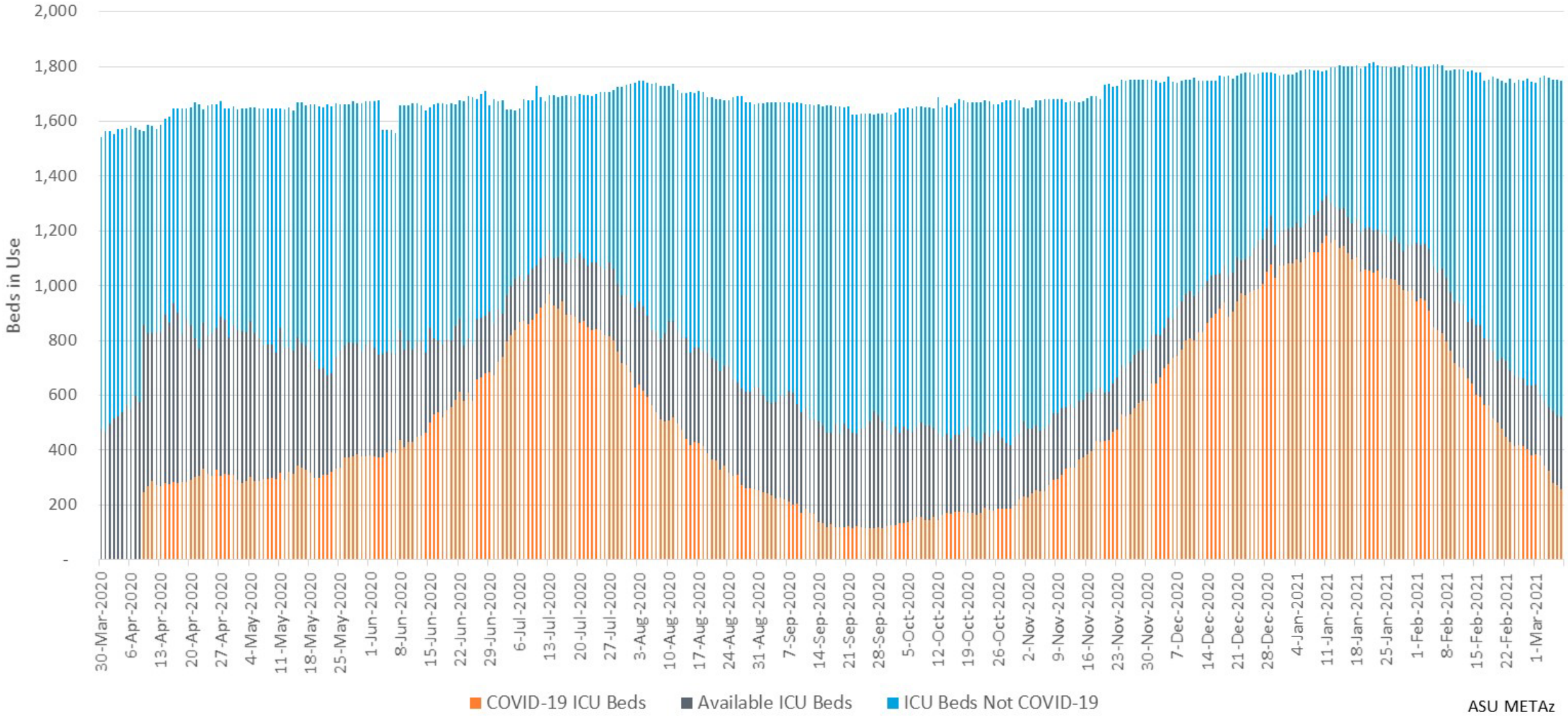
ASU METAz

### Arizona Statewide COVID-19 Emergency Department Visits



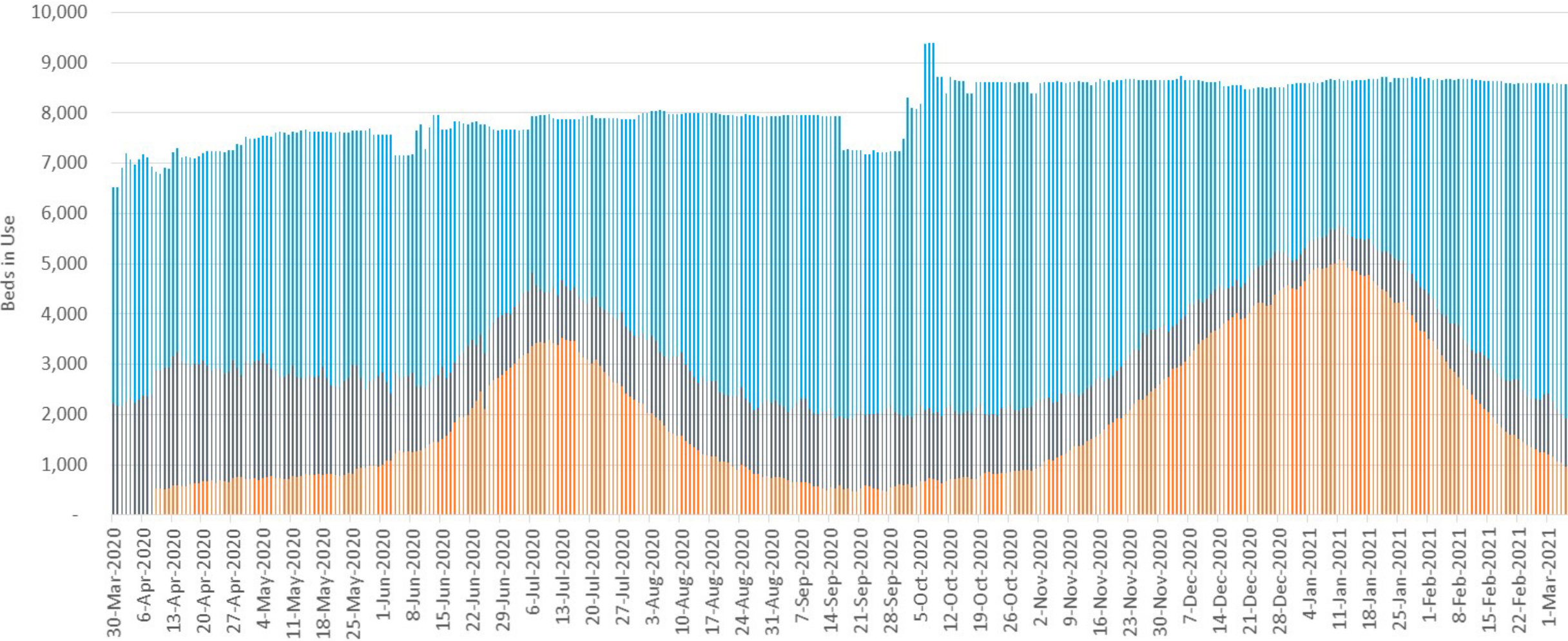
ASU METAz

# Arizona Statewide ICU Bed Usage



ASU METAz

### Arizona Statewide Inpatient Bed Usage

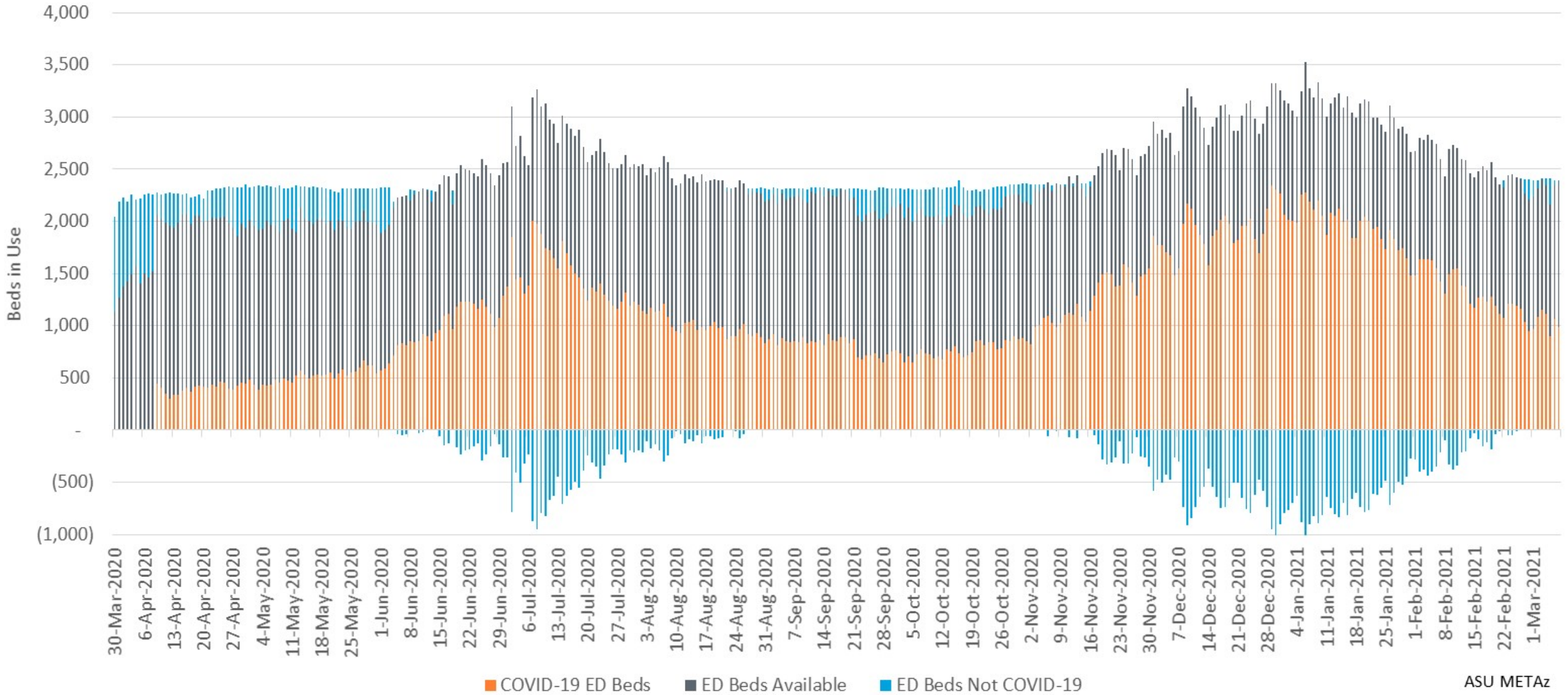


COVID-19 Hospital Beds    Hospital Beds Available    Hospital Beds Not COVID-19

ASU METaz



# Arizona Statewide ED Bed Usage



Where blue bars are below zero, COVID ED patients exceeded total reported ED bed usage