



# COVID Epidemiology Situation Update

Tim Lant, PhD, MAS, Heather Ross PhD, DNP, ANP-BC, Anna Muldoon, MPH, Samantha Sokol, Jordy Rodriguez, Esma Gel, PhD, and Megan Jehn, PhD

**February 5, 2021**

# Summary

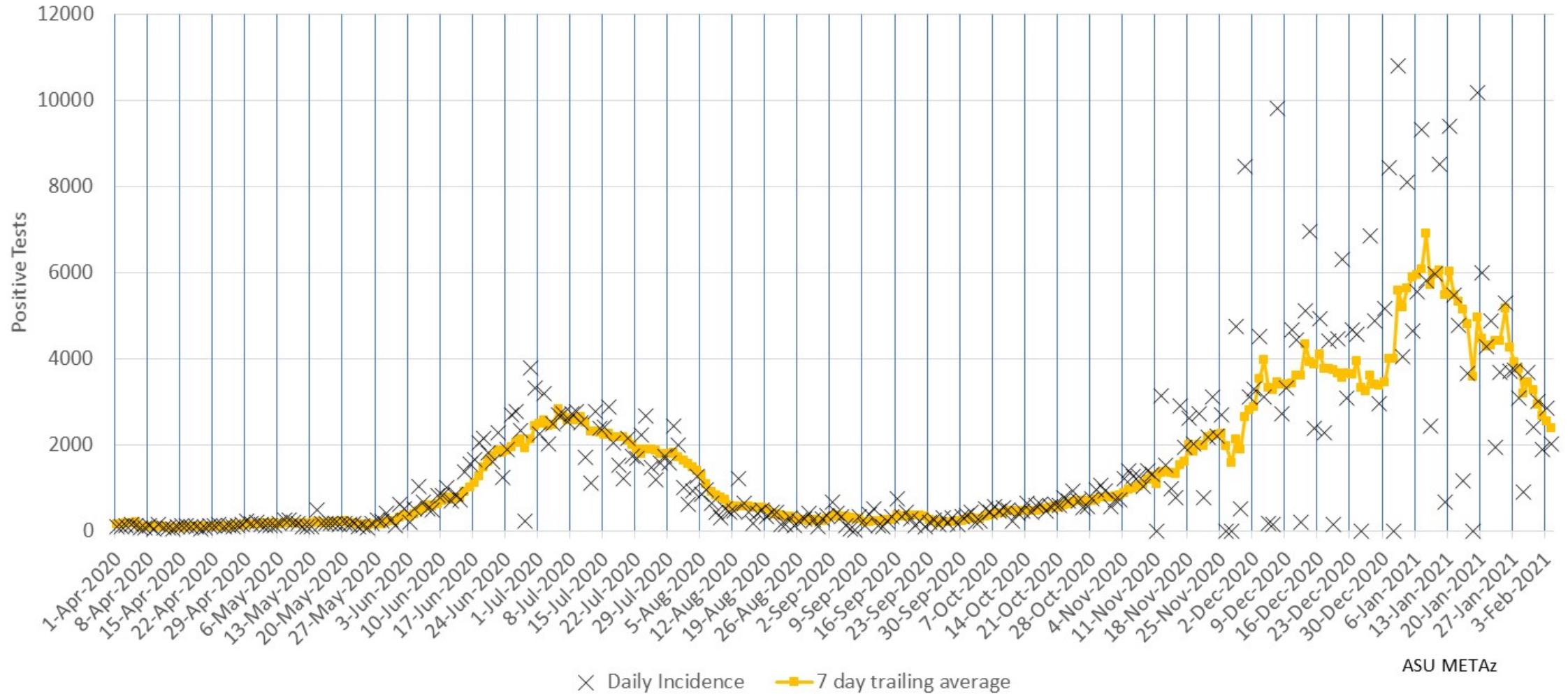
February 5, 2021				
	Statewide		Maricopa	
	Reported Today	Cumulative	Reported Today	Cumulative
<b>Cases</b>	3,826	775,622	2,484	483,775
<b>PCR Tests</b>	15,705	3,519,585	9,700	2,115,795
<b>% Positive</b>	24.4%	22.0%	25.6%	15.3%
<b>Hospitalizations</b>	218	54,309	175	33,718
<b>Deaths</b>	196	13,948	118	7,885
<i>All data pulled from azdhs.gov. Numbers may not match Maricopa county data.</i>				

- Today's statewide case count is 3,826 with 2,484 cases (65%) in Maricopa County, slightly higher than population distribution. The 7-day average for reported cases has fallen to 3,908, similar to average case counts at the peak of the July surge. This is the first day with 7-day average cases below 4,000 since Nov 30.
- The epi curve continues to fall in Maricopa County and statewide. Peak cases by incident date remains 1/4.
- For the first time since Dec 7, 2020, 7-day average positivity has fallen below 30% (to 28.5%).
- Overall hospital utilization continues to decline slowly and is at levels similar to the peak of the July 2020 surge. ICU bed usage and ER visits are generally plateaued; trends in med-surg bed usage for COVID-19 continue to decline. Bed usage for COVID-19 is 37% of inpatient beds and 51% of ICU beds statewide. Current hospital utilization is 90% for inpatient beds and 87% for ICU beds including COVID and non-COVID utilization. Hospitals statewide that they are beginning to recover in both physical and personnel resources, noting that inpatient workers are generally exhausted.
- Hospitalization rates for COVID-19 cases have stabilized though hospitalization death rates continue to increase.

# Maricopa County Analysis

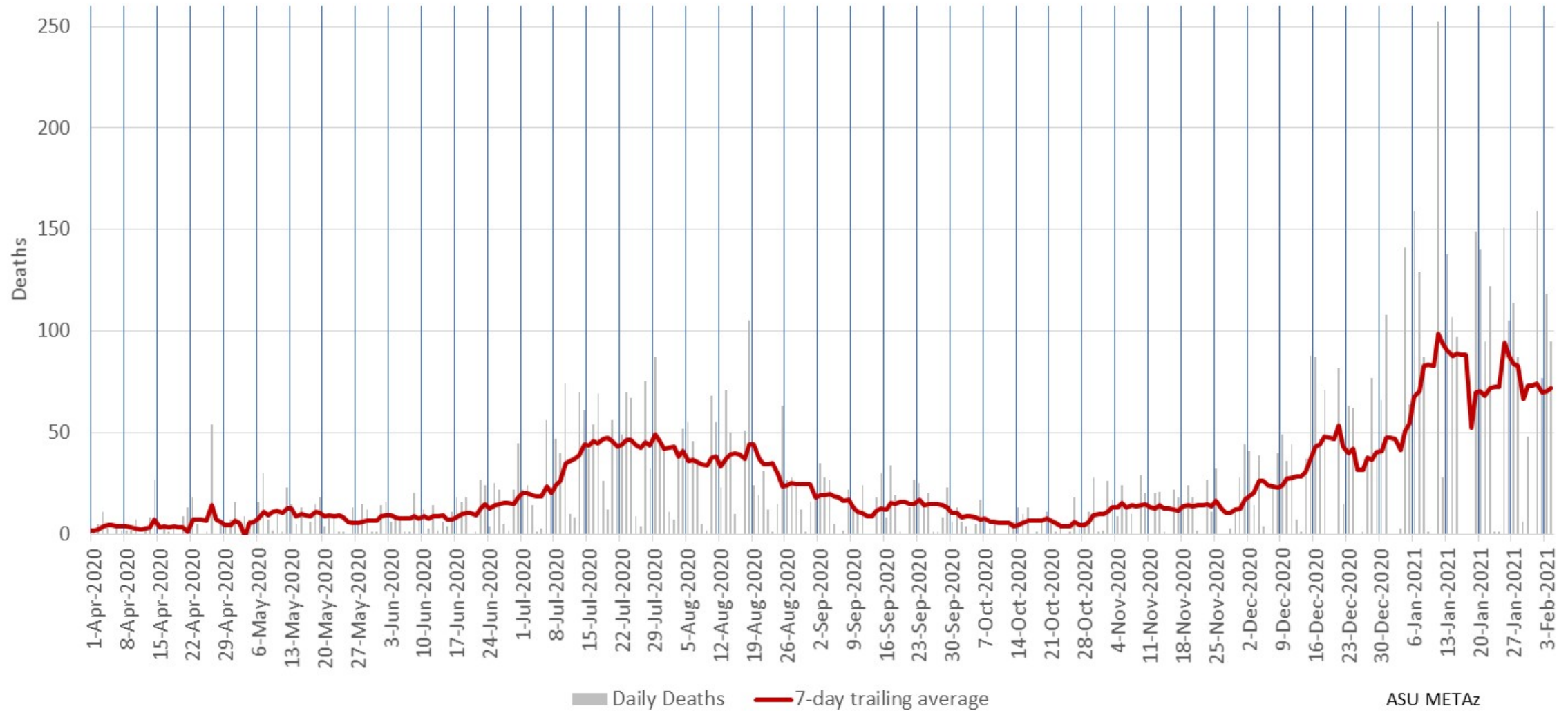


### Maricopa County Daily COVID-19 Positive Tests Results Reported (confirmed incidence)



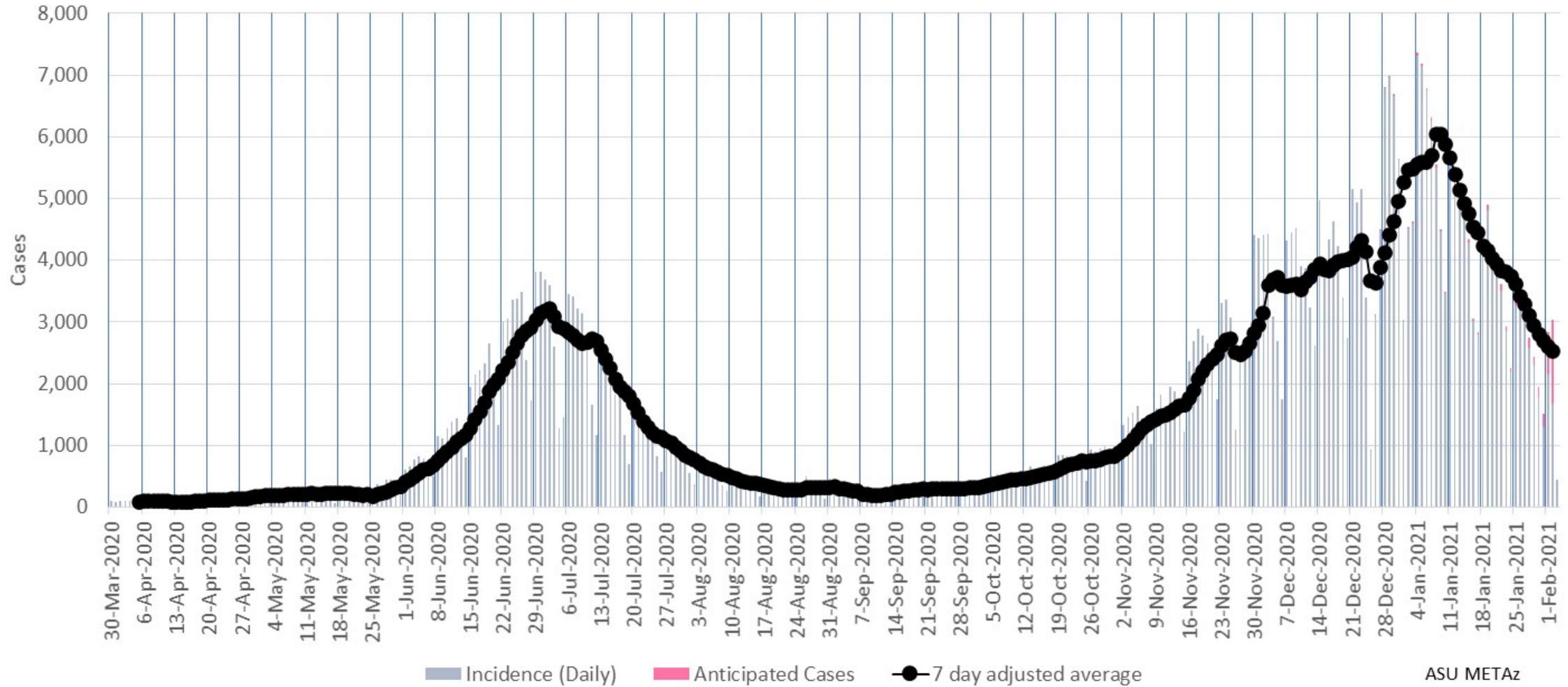
Due to the holidays, multiple days of data were held (Nov 11, 26 & 27; December 25, January 1 & 18) and reported on the next business day.

Maricopa County Daily COVID-19 Deaths (by date of reporting)



Due to the holidays, multiple days of data were held (Nov 11, 26 & 27; December 25, January 1) and reported on the next business day.

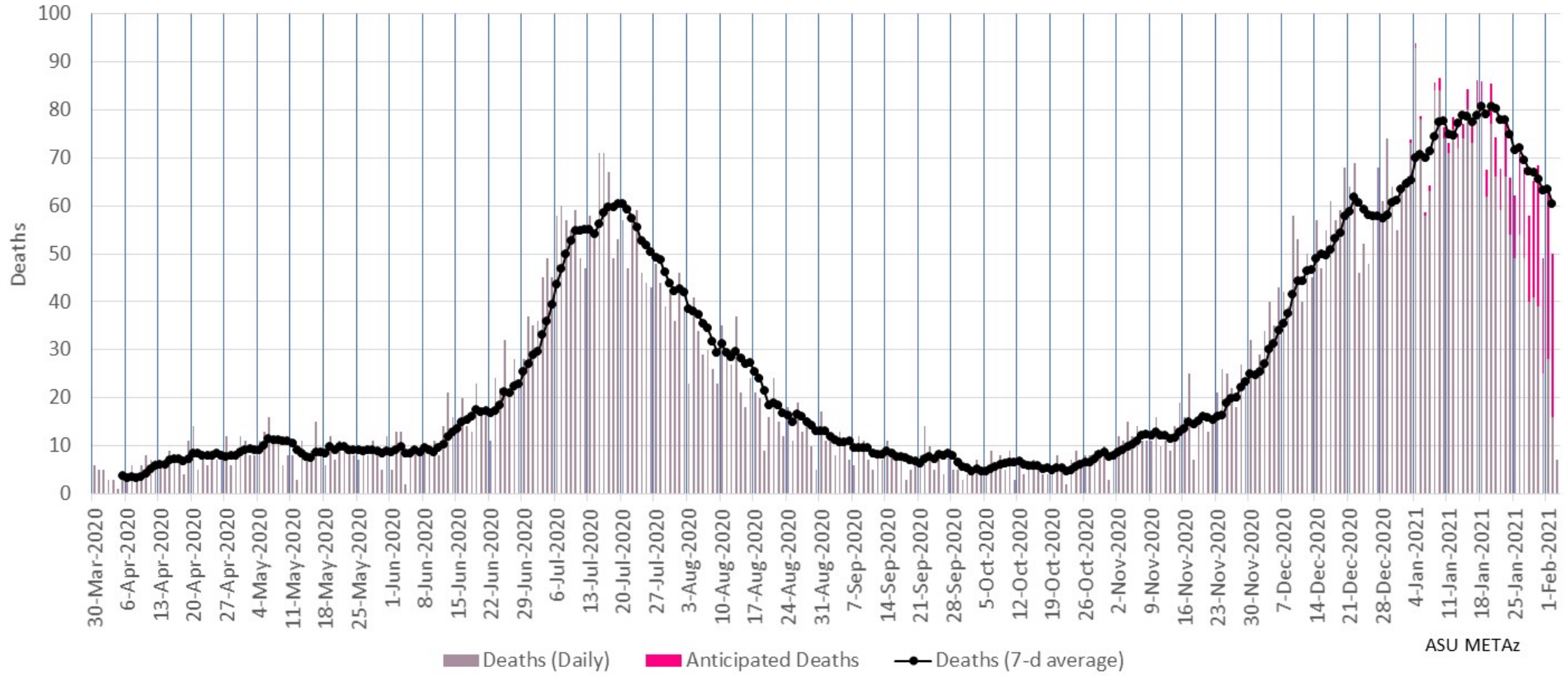
# Maricopa County Daily COVID-19 Cases by Date of Sample Collection (Epi Curve)



ASU METAz



### Maricopa County Daily COVID-19 Deaths by Date of Death (Epi Curve)



ASU METAz

# Arizona Statewide Analysis

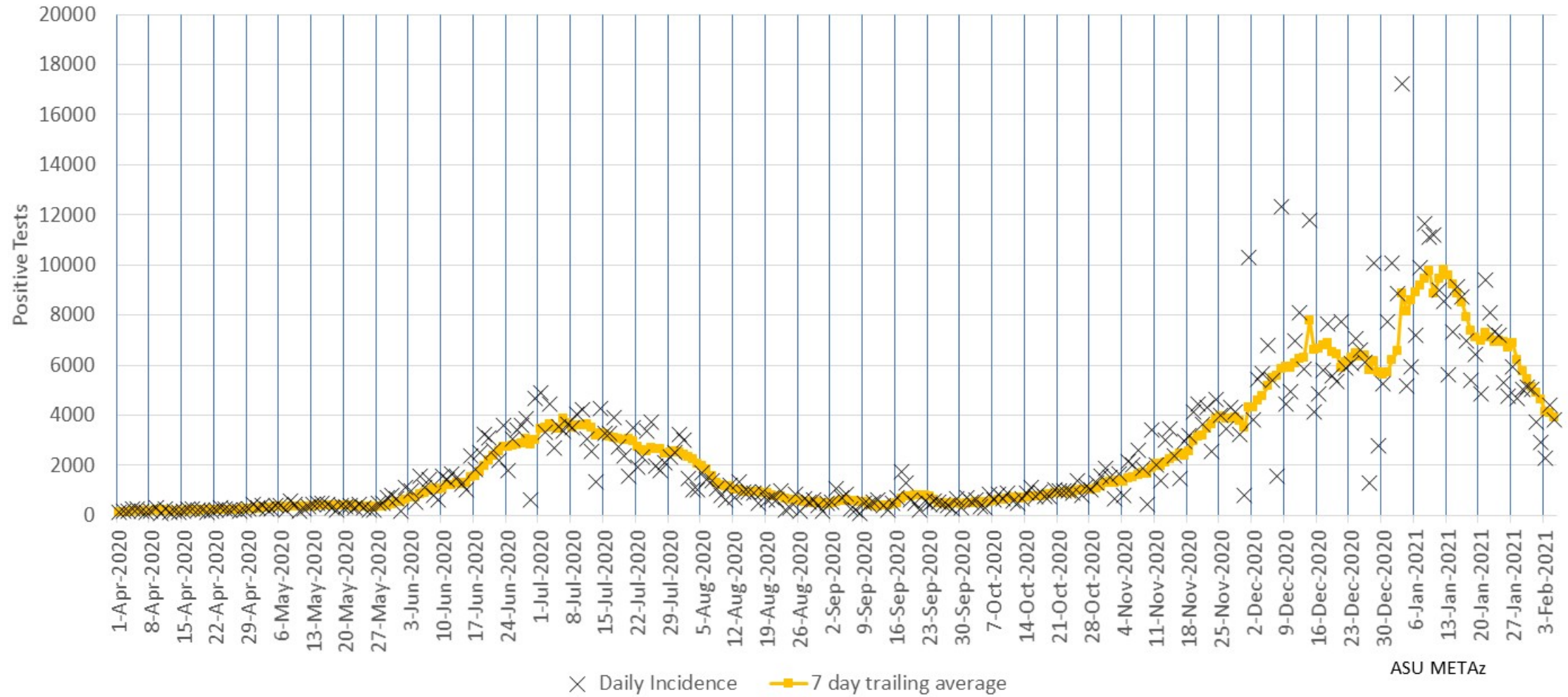




# Epidemiology

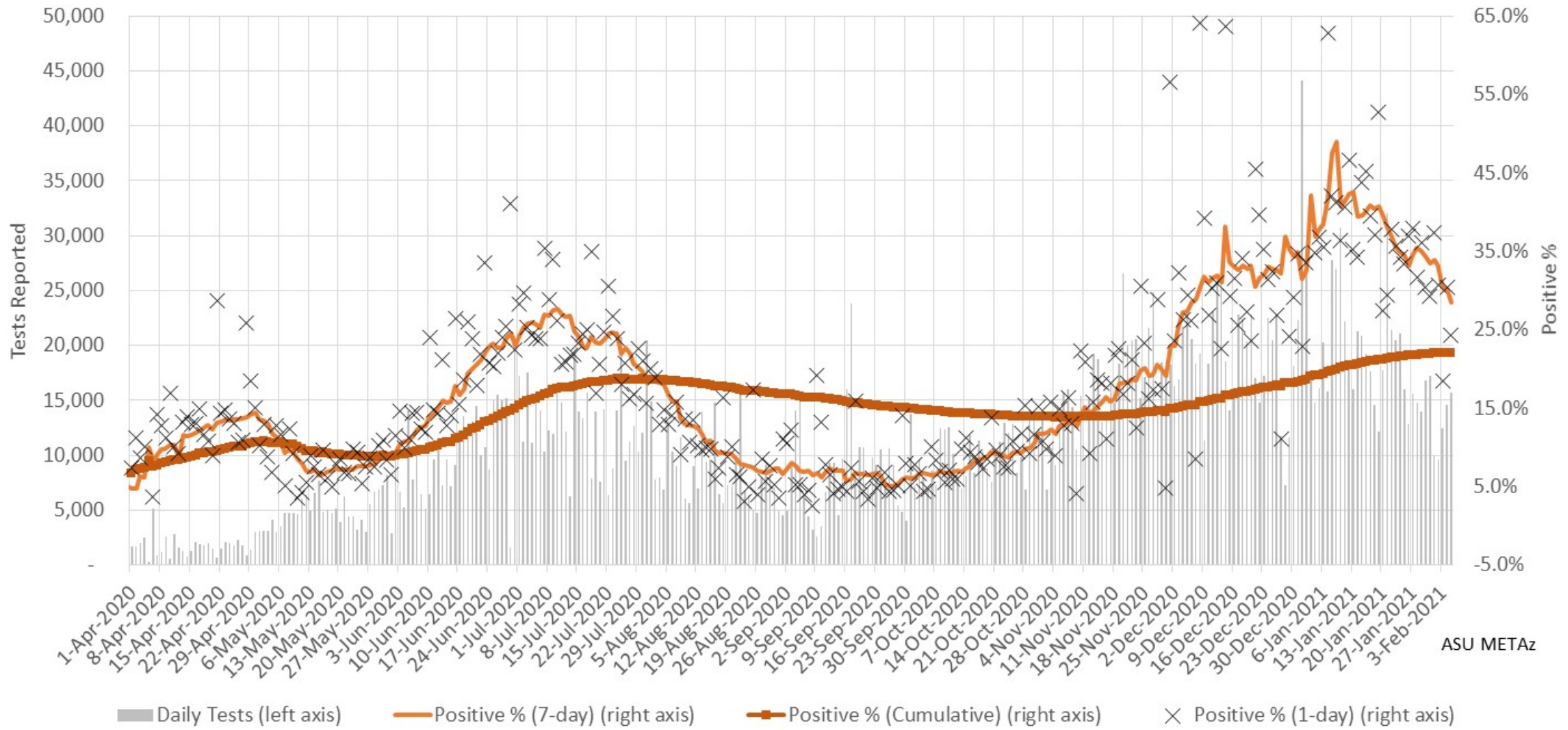


### Arizona Statewide Daily COVID-19 Positive Tests Results Reported (confirmed incidence)



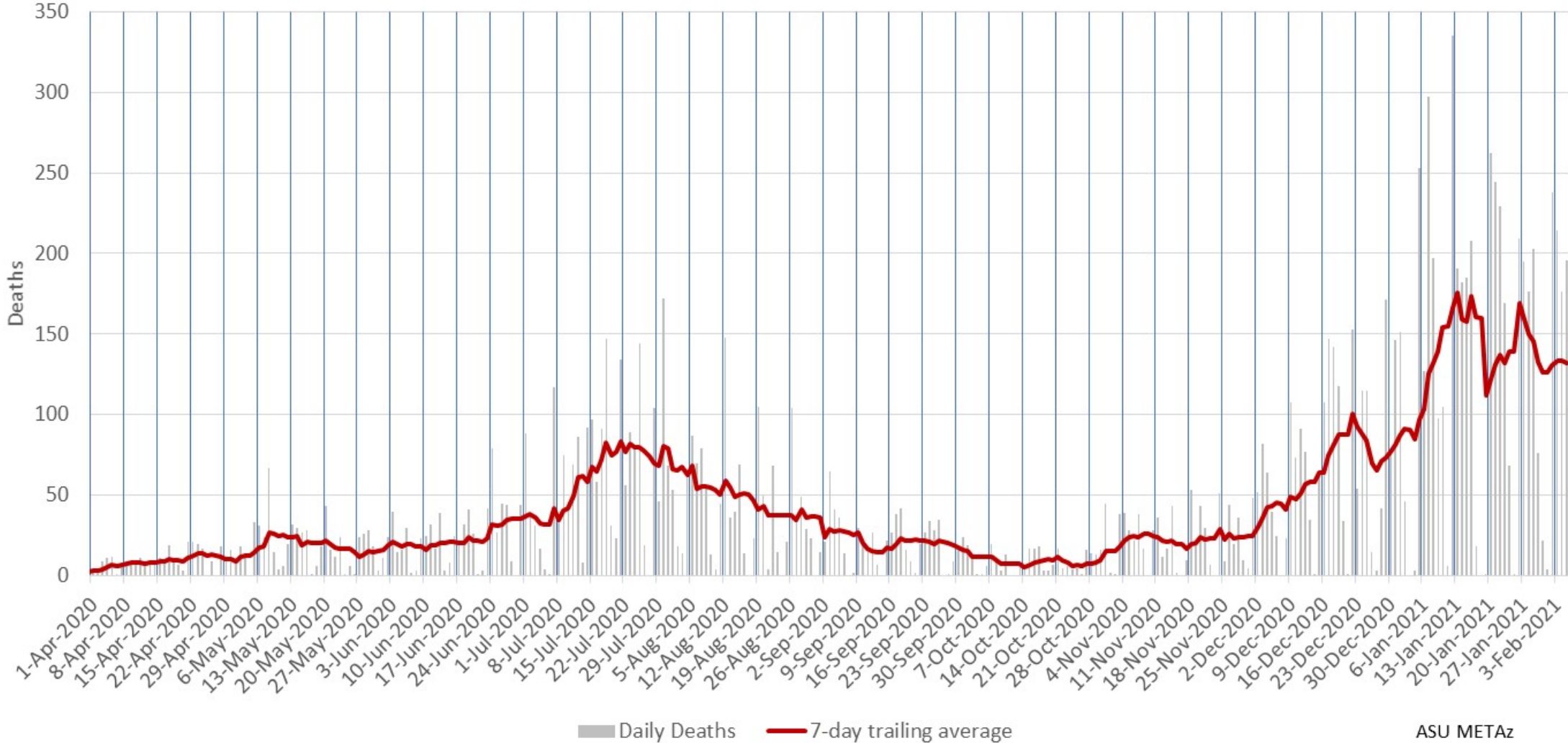
ASU METAz

### Arizona Statewide Rolling weekly positive COVID-19 test rate



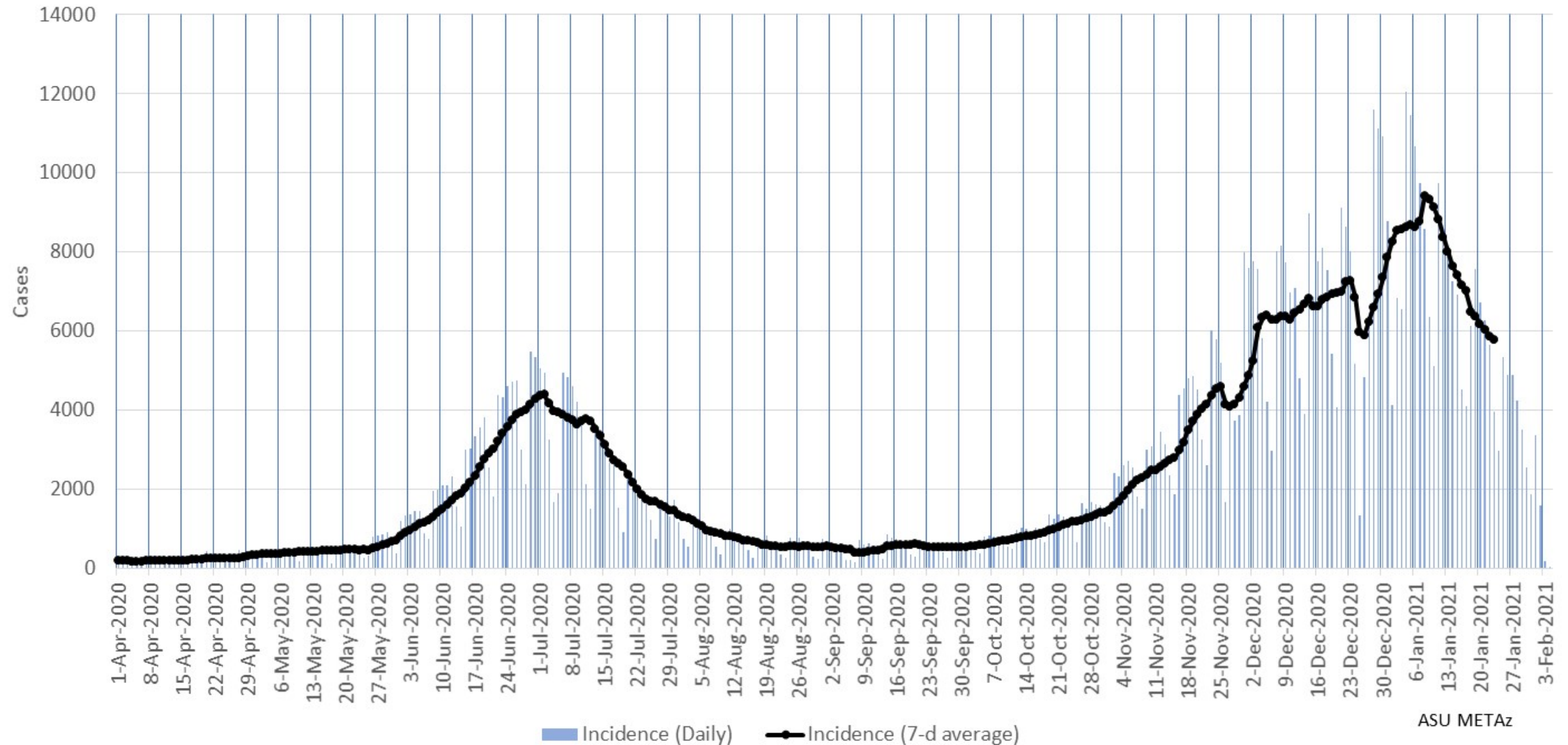
ASU METAz

Arizona Statewide Daily COVID-19 Deaths (by date of reporting)



ASU METAz

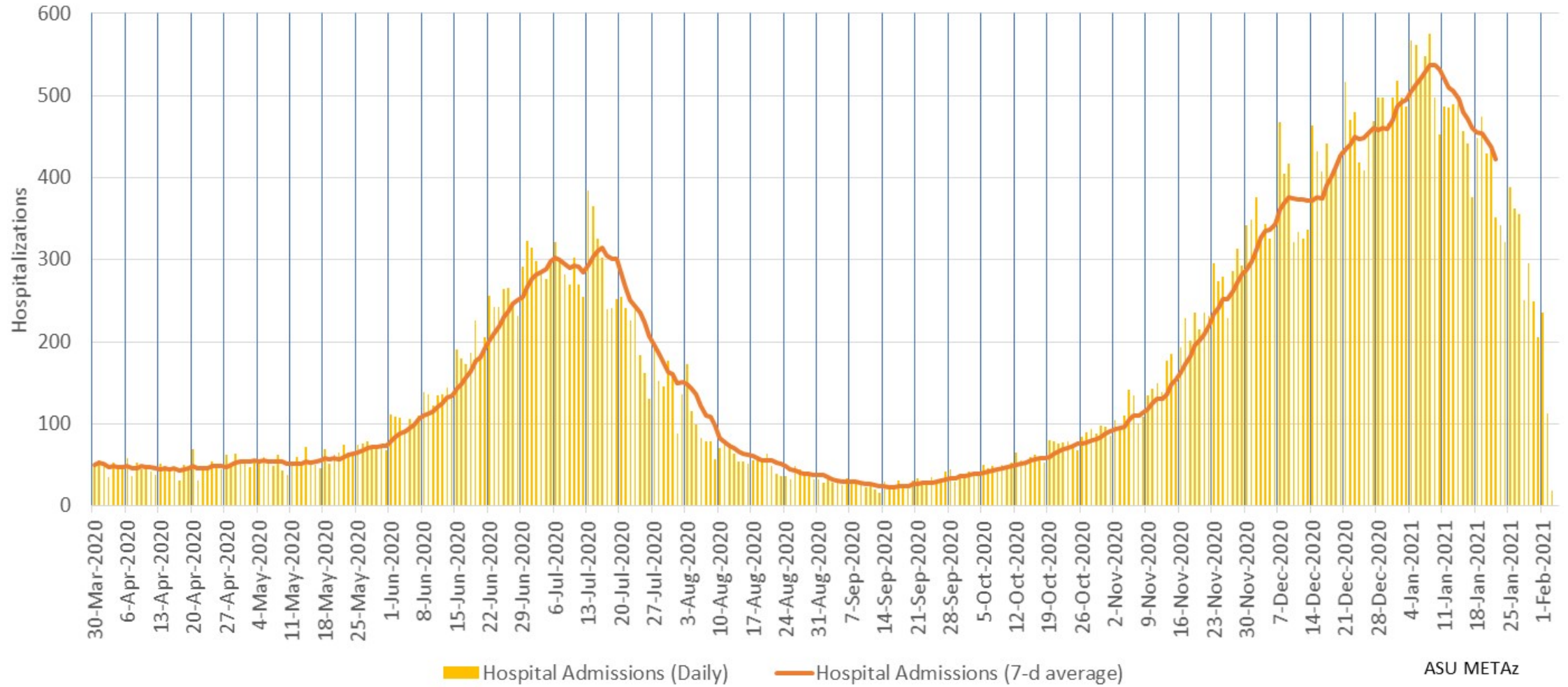
### Arizona Statewide Daily COVID-19 Cases by Date of Sample Collection (Epi Curve)



ASU METAz

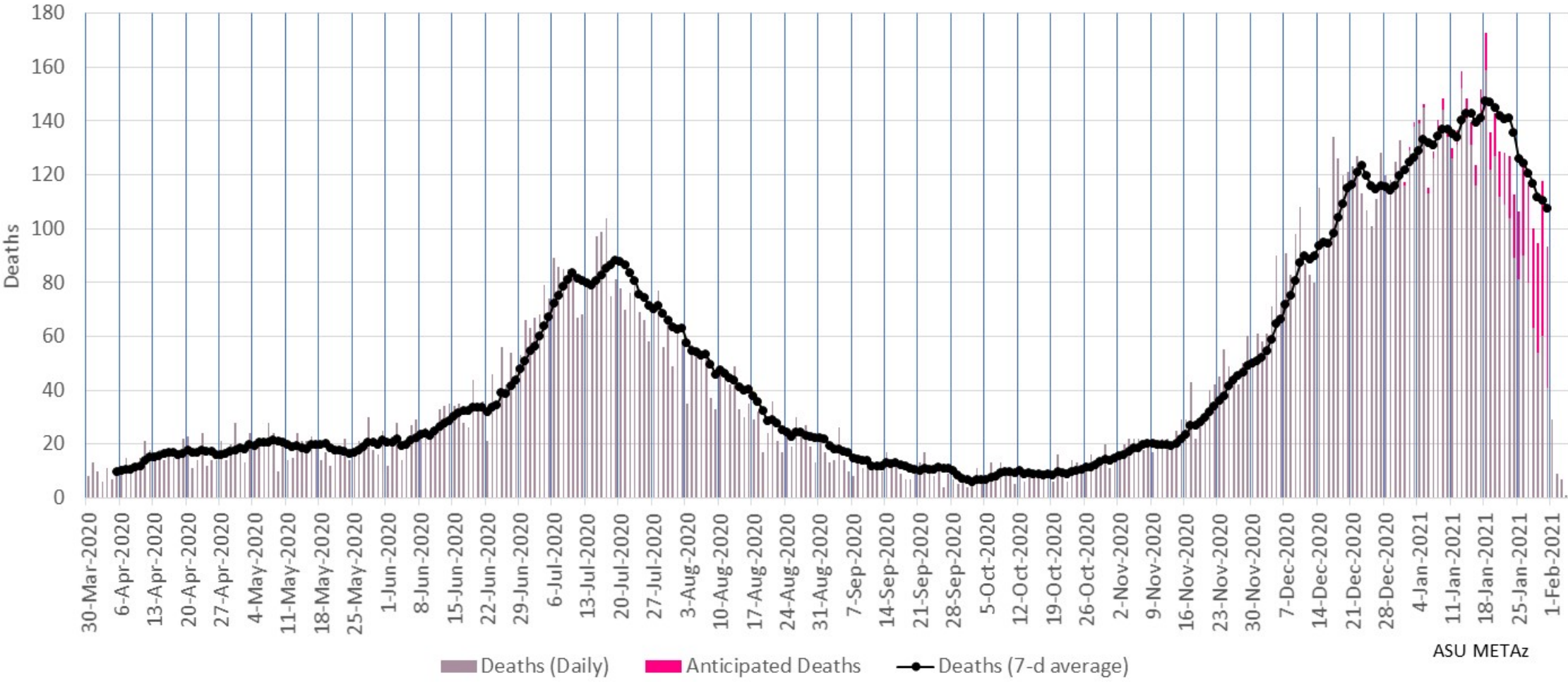


# Arizona Statewide Daily COVID-19 Hospitalizations by Date of Hospitalization (Epi Curve)



ASU METAz

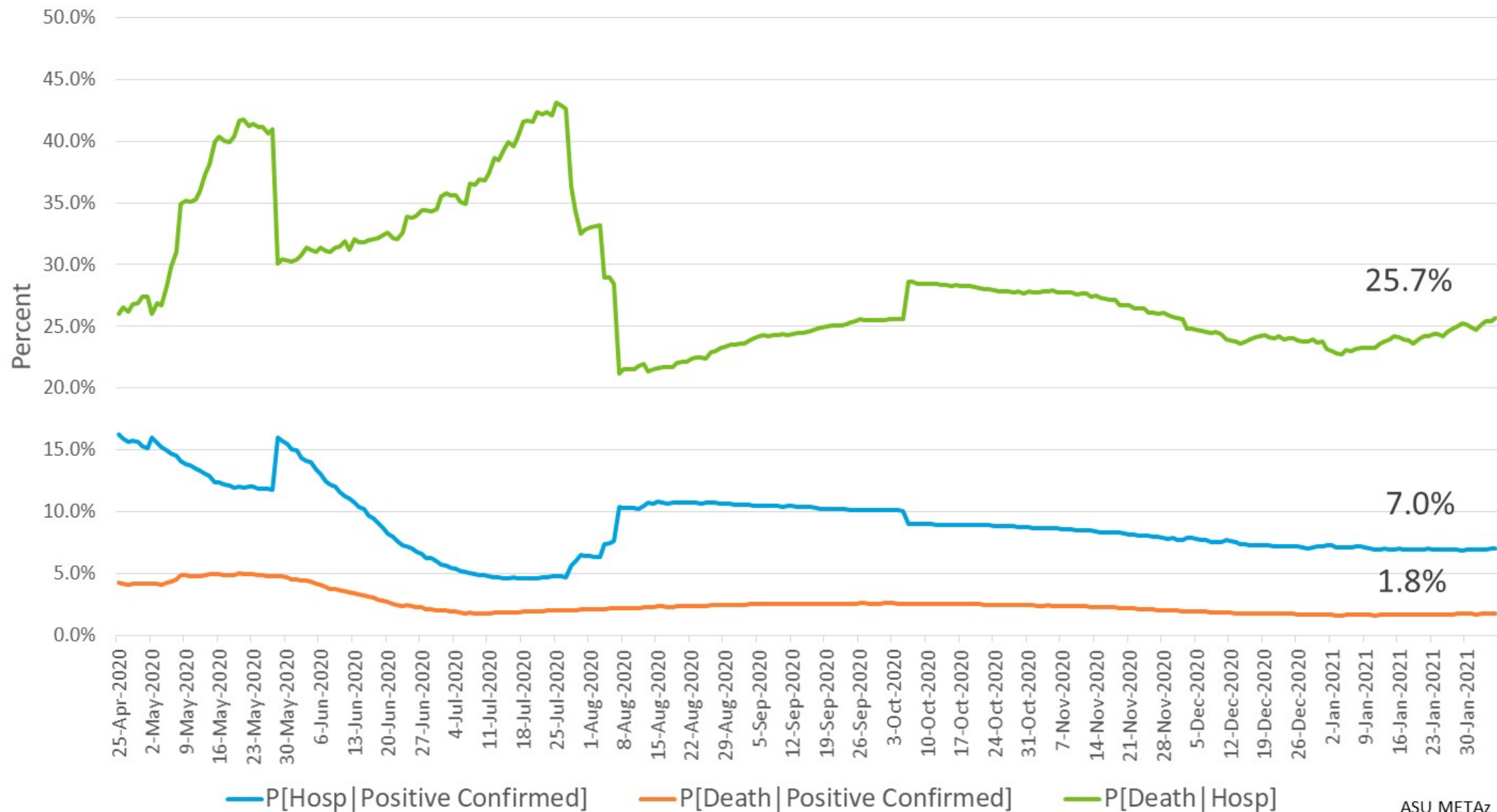
### Arizona Statewide Daily COVID-19 Deaths by Date of Death (Epi Curve)



ASU METAz



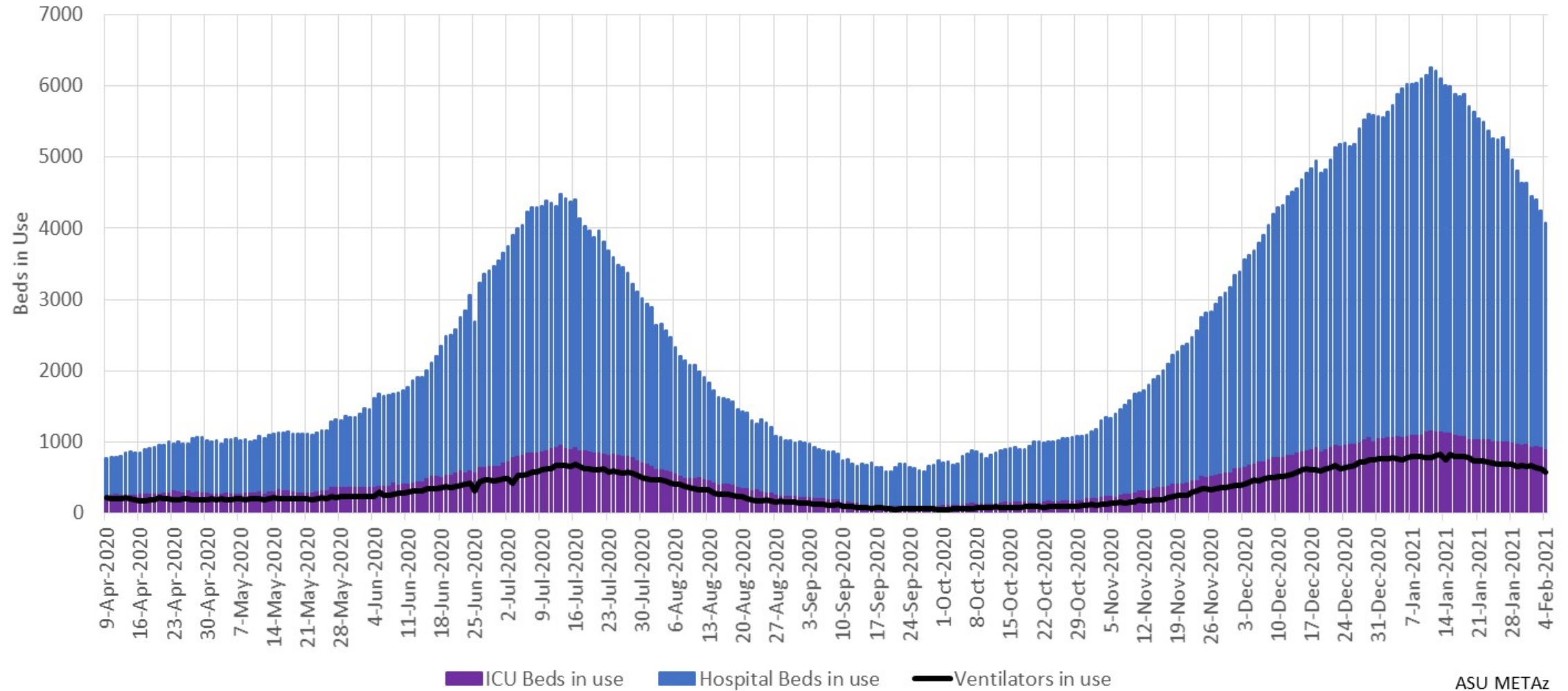
# Arizona Statewide Case Fatality and Hospitalization Rates



# Hospital Usage

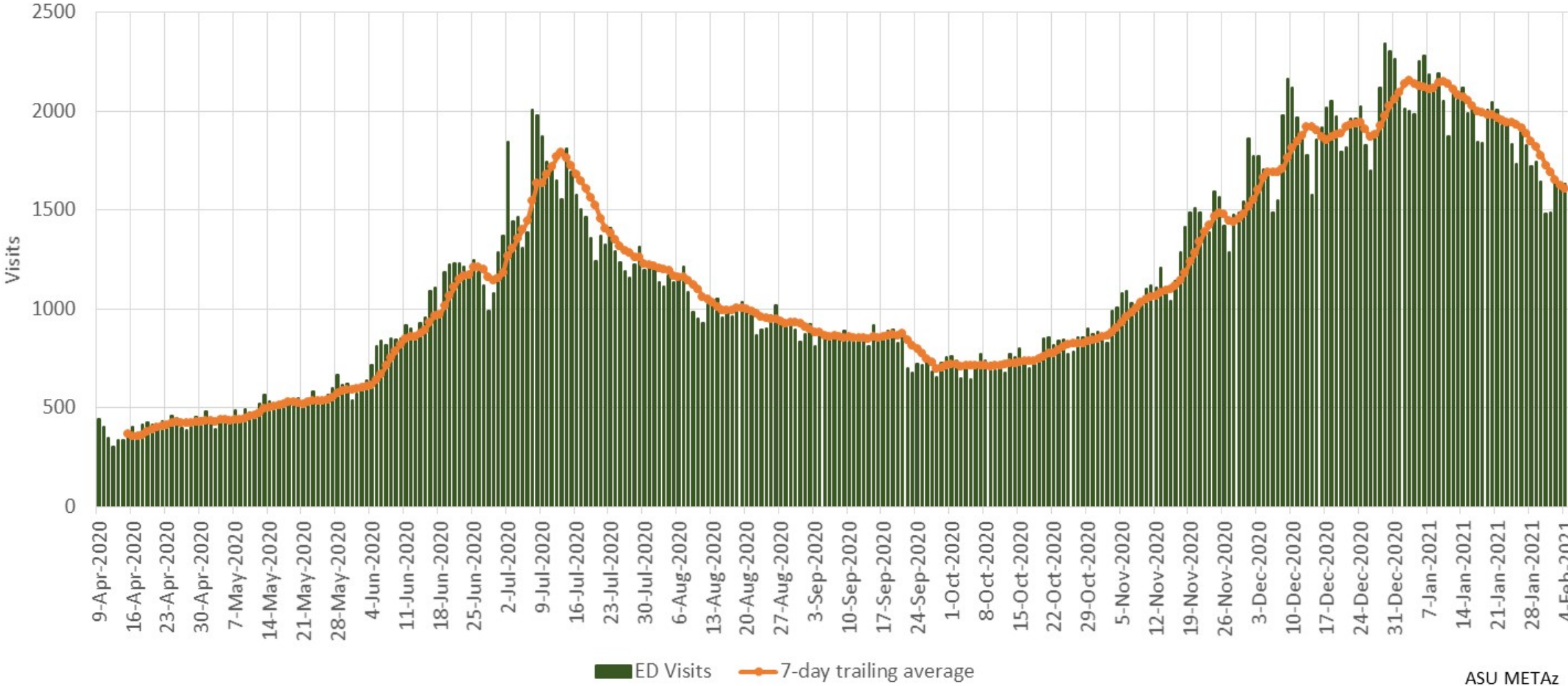


## Arizona Statewide COVID-19 Hospital Resource Utilization



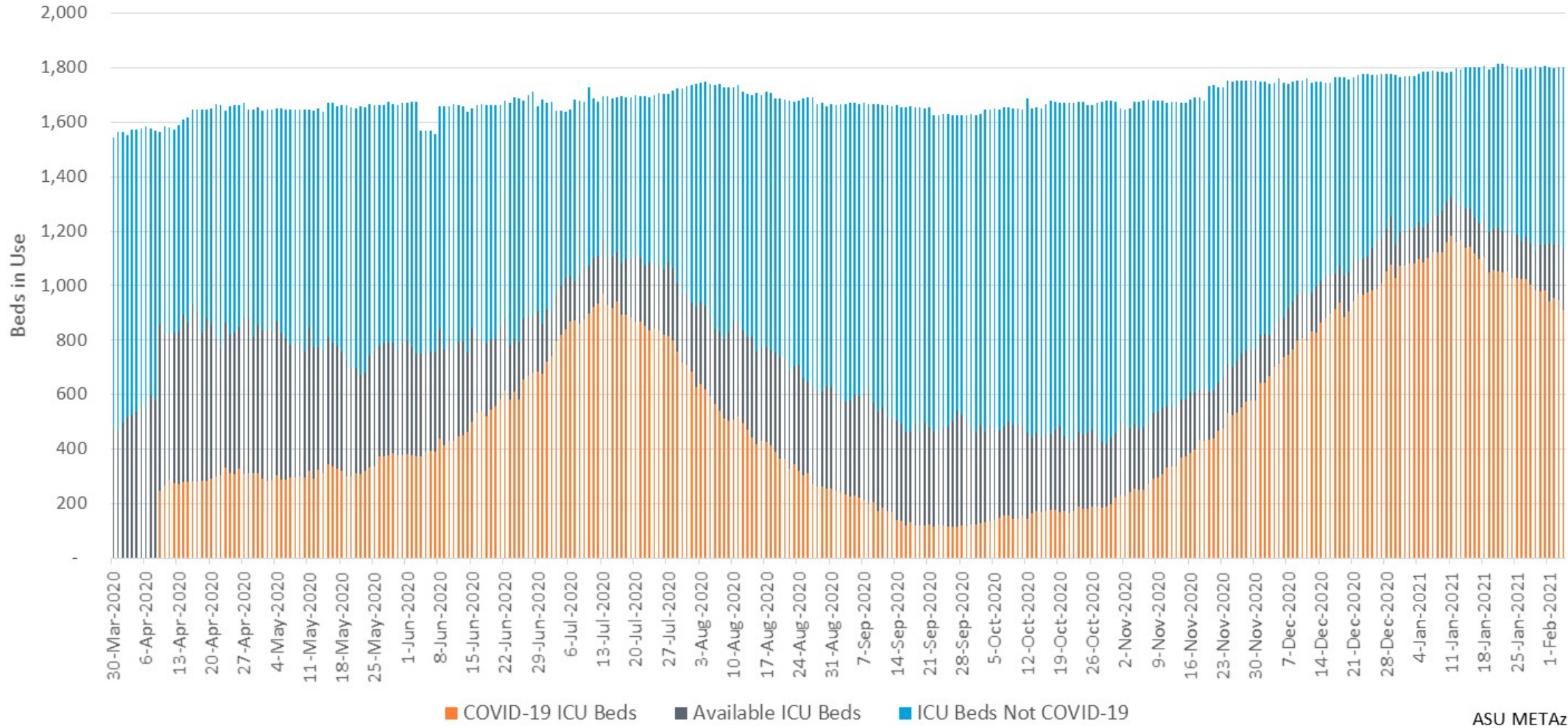
ASU METAz

# Arizona Statewide COVID-19 Emergency Department Visits



ASU METAz

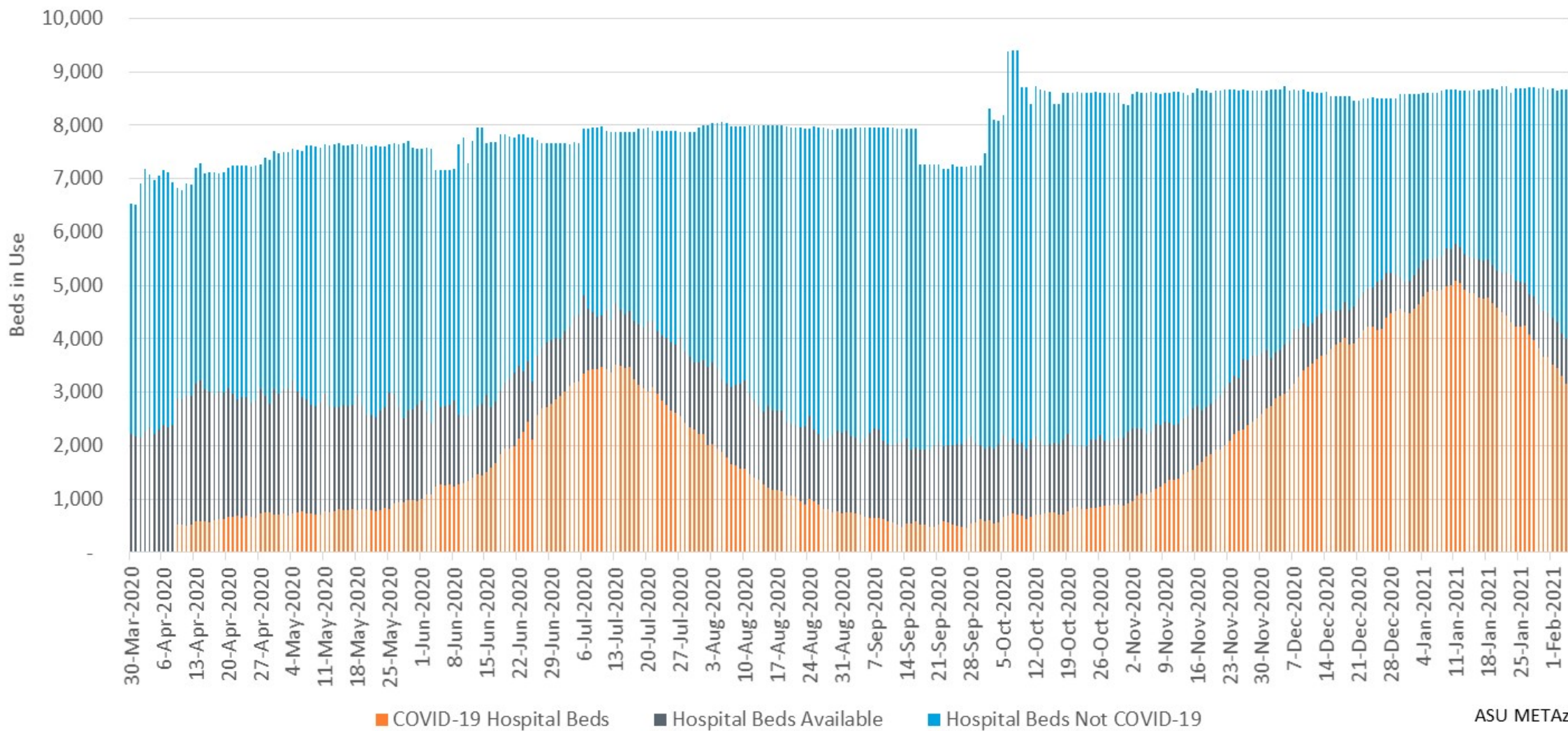
### Arizona Statewide ICU Bed Usage



ASU METAz

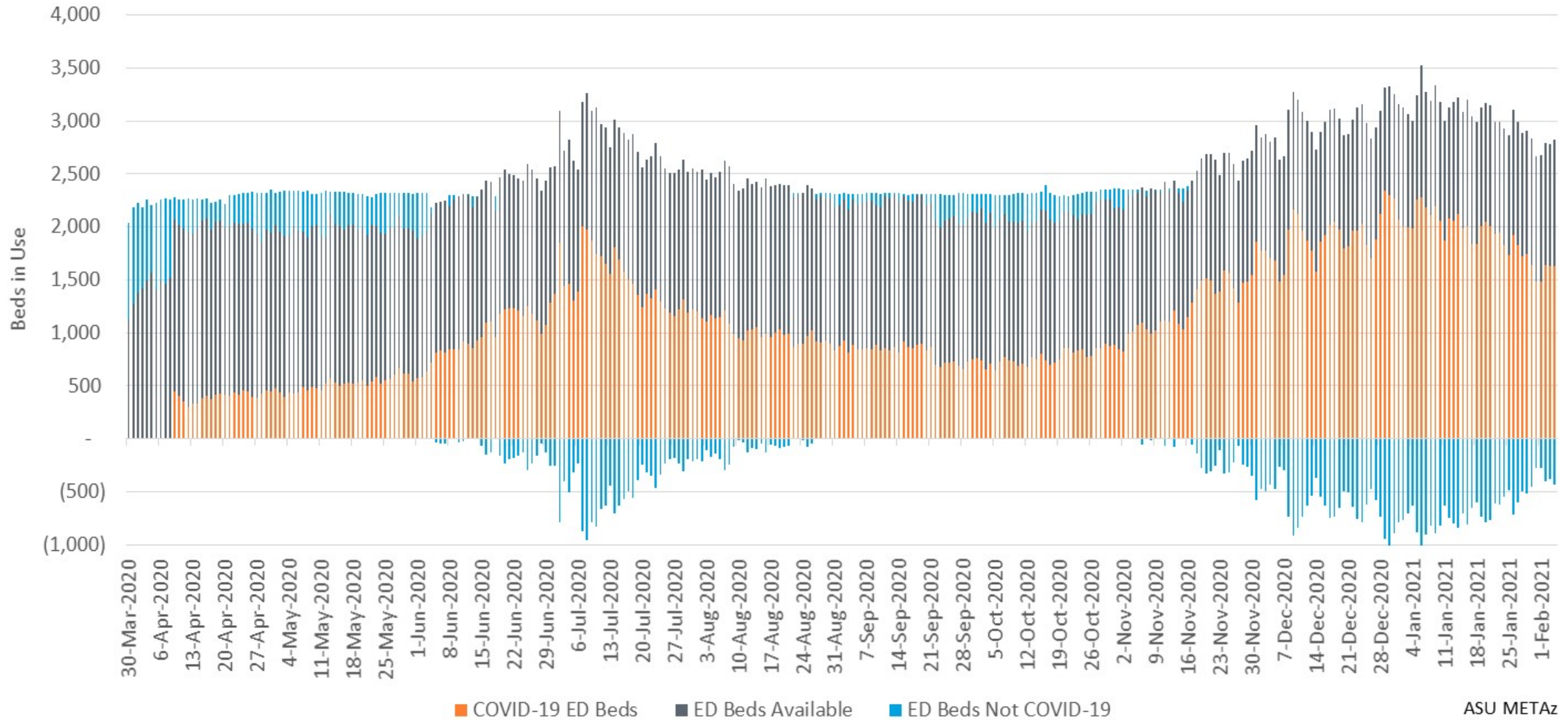


### Arizona Statewide Inpatient Bed Usage



ASU METAz

### Arizona Statewide ED Bed Usage



Where blue bars are below zero, COVID ED patients exceeded total reported ED bed usage