



COVID Epidemiology Situation Update

Tim Lant, PhD, MAS, Heather Ross PhD, DNP, ANP-BC, Anna Muldoon, MPH, Samantha Sokol, Esma Gel, PhD, and Megan Jehn, PhD

January 4, 2021

Summary

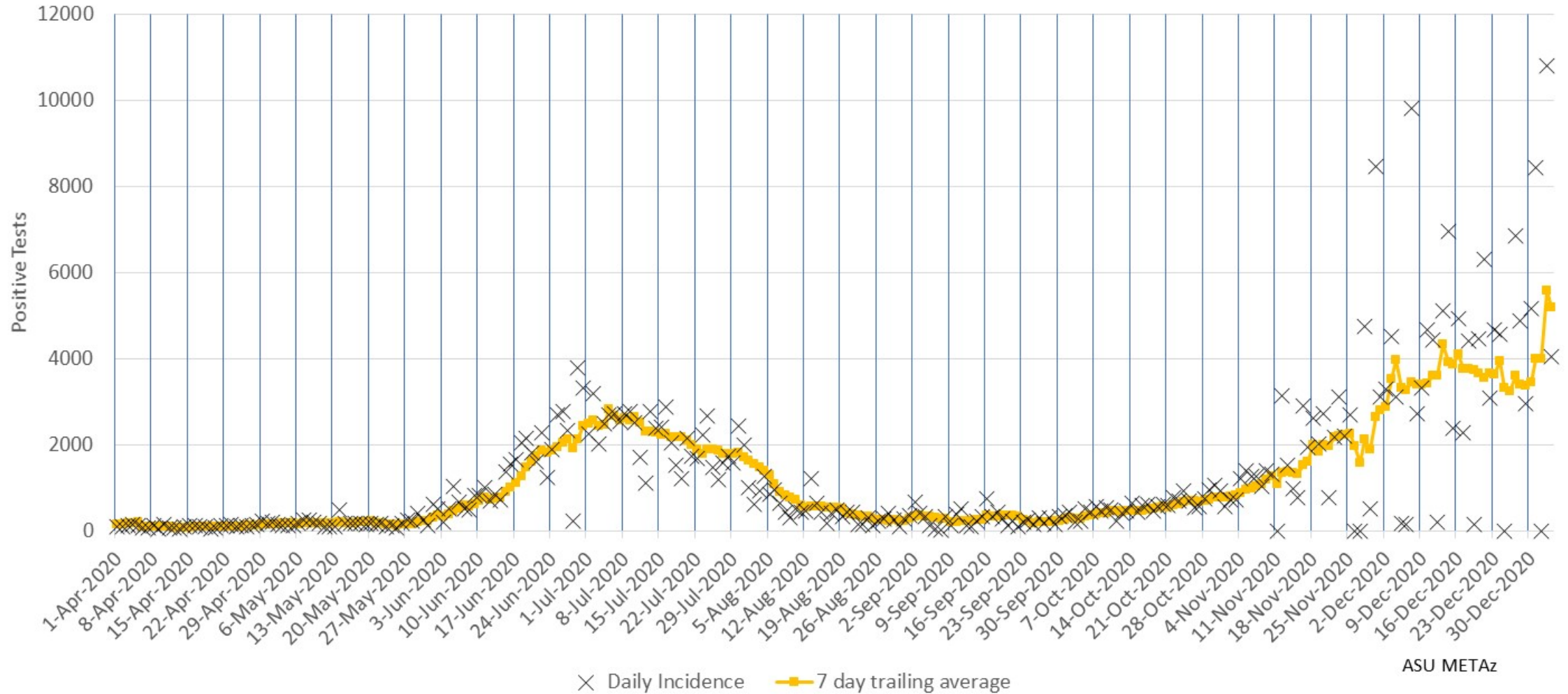
January 4, 2021				
	Statewide		Maricopa	
	Reported Today	Cumulative	Reported Today	Cumulative
Cases	5,158	561,542	3,189	346,183
PCR Tests	14,822	2,937,589	10,553	1,749,003
% Positive	34.8%	19.1%	30.2%	13.7%
Hospitalizations	169	39,897	115	24,424
Deaths	3	9,064	2	5,241
<i>All data pulled from azdhs.gov. Numbers may not match Maricopa county data.</i>				

- Today's statewide case count is 5,158 with 3,189 cases (62%) in Maricopa County, equivalent to population distribution. The 7-day average for reported cases is now 8,160. There has been very high variance in daily cases reported for approximately the past 5 weeks, introducing concern about the reliability of data reports during this time period.
- The epi curve appears to be plateauing in Maricopa County and statewide for the past week at a level higher than the previous wave in Arizona. Peak cases by incident date is 10,709 on 12/28.
- Due to significant irregularities in ADHS data reporting patterns, 7-day average positivity is more reliable than day-to-day positivity. 7-day average positivity has remained above 30% for nearly 4 weeks indicating sustained uncontrolled spread.
- Hospital utilization continues to increase. Bed usage for COVID-19 is 54% of inpatient beds and 61% of ICU beds statewide. Current hospital utilization is 92% for inpatient beds and 93% for ICU beds including COVID and non-COVID utilization. There was a noticeable increase in non-COVID bed usage in the last day. Hospitals statewide are experiencing extreme shortages with many on divert status.

Maricopa County Analysis

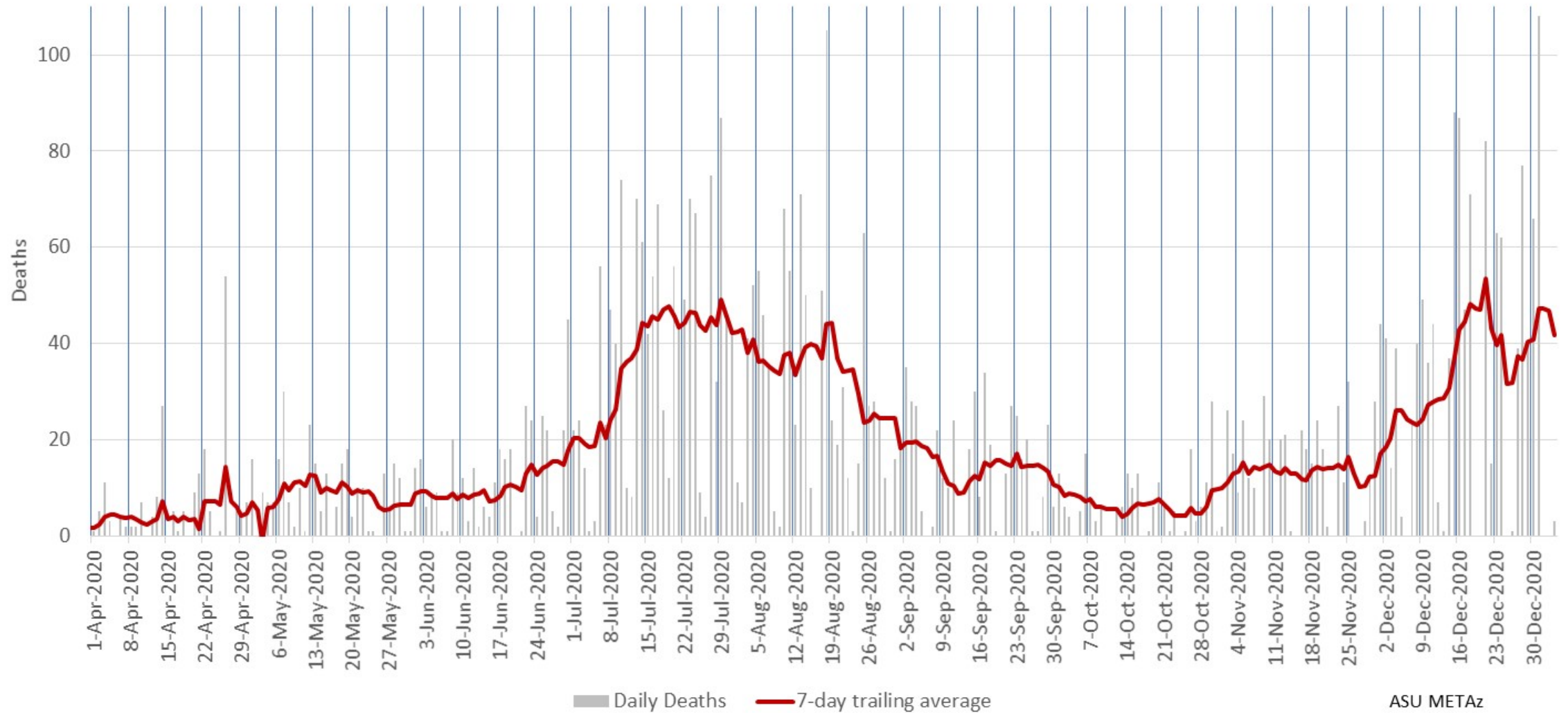


Maricopa County Daily COVID-19 Positive Tests Results Reported (confirmed incidence)



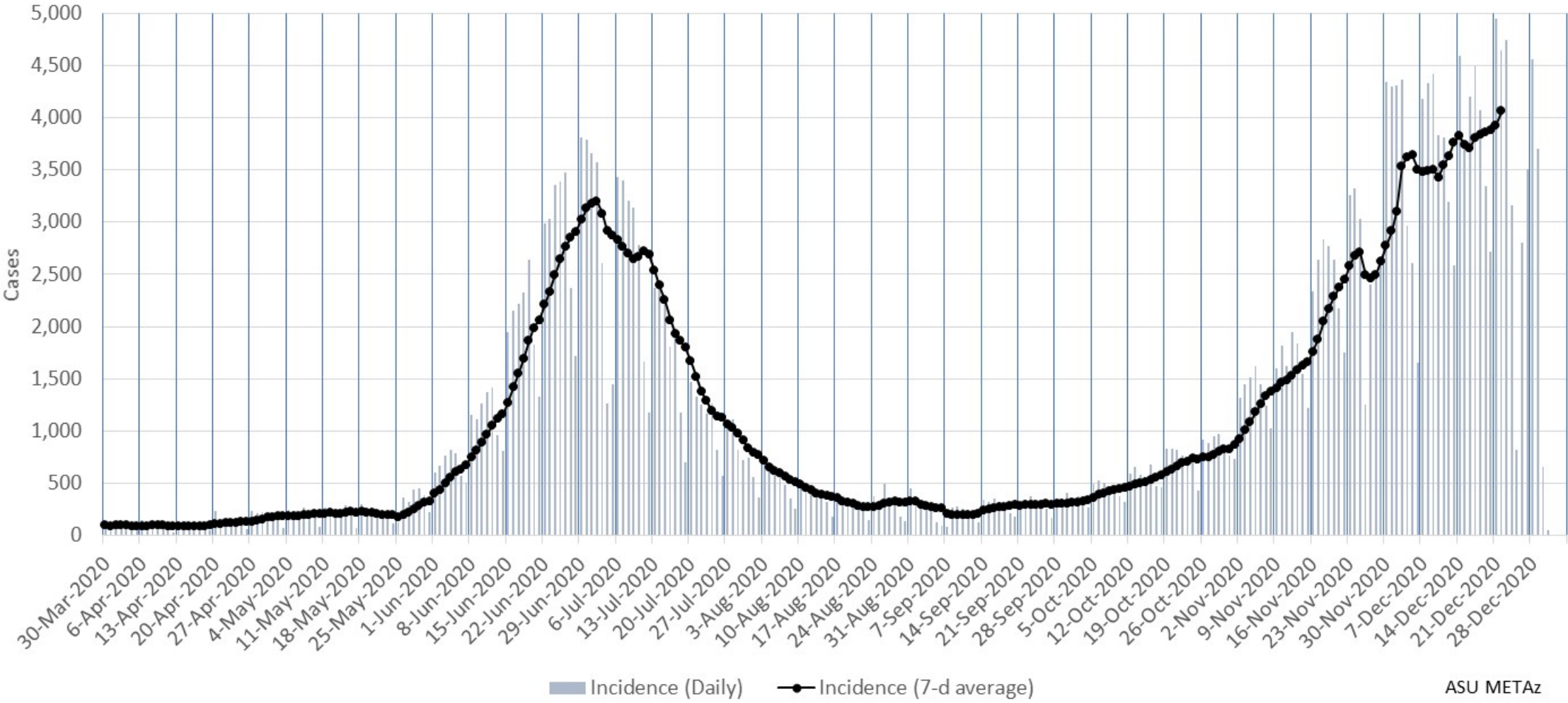
Due to the holidays, multiple days of data were held (Nov 11, 26 & 27; December 25, January 1) and reported on the next business day.

Maricopa County Daily COVID-19 Deaths (by date of reporting)



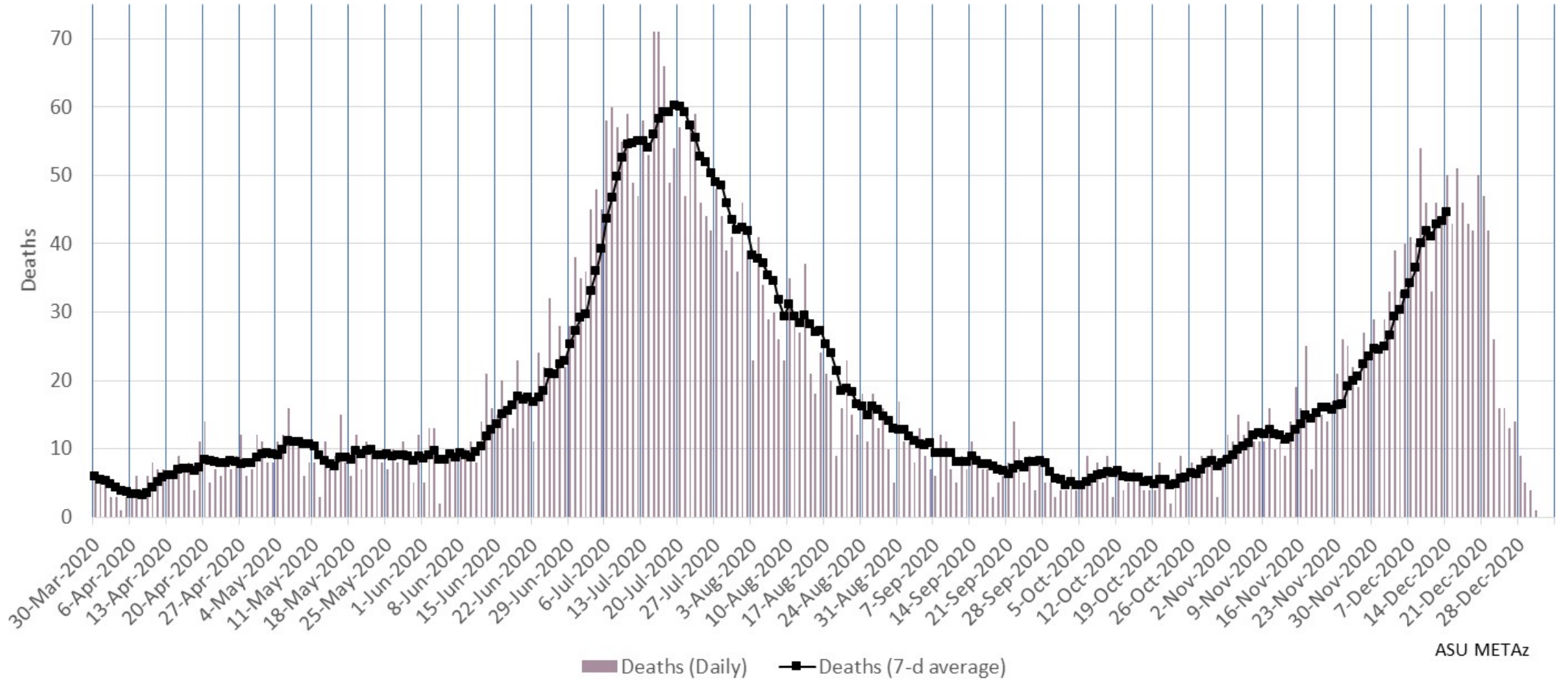
Due to the holidays, multiple days of data were held (Nov 11, 26 & 27; December 25, January 1) and reported on the next business day.

Maricopa County Daily COVID-19 Cases by Date of Sample Collection (Epi Curve)



ASU METAz

Maricopa County Daily COVID-19 Deaths by Date of Death
(Epi Curve)



ASU METAz

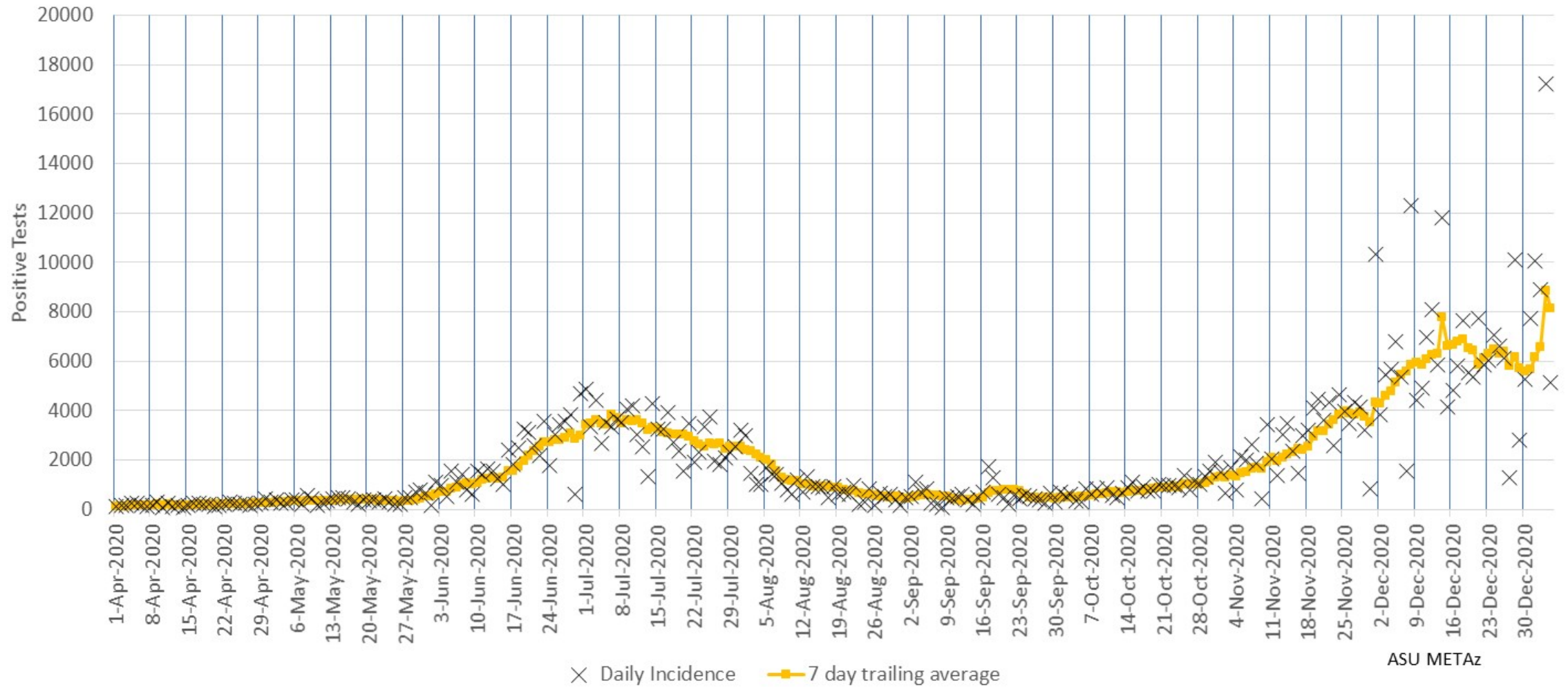
Arizona Statewide Analysis



Epidemiology

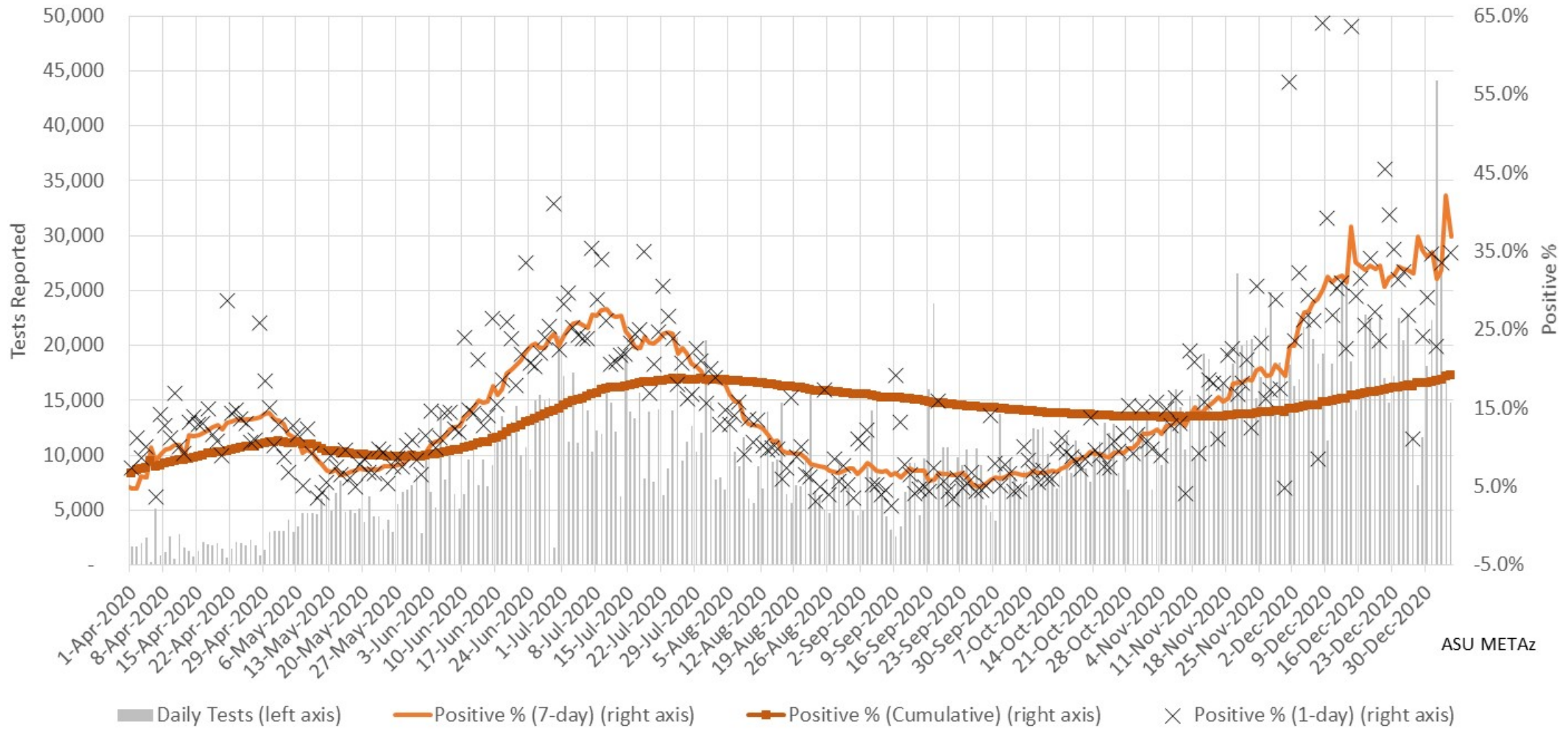


Arizona Statewide Daily COVID-19 Positive Tests Results Reported (confirmed incidence)



ASU METAz

Arizona Statewide Rolling weekly positive COVID-19 test rate

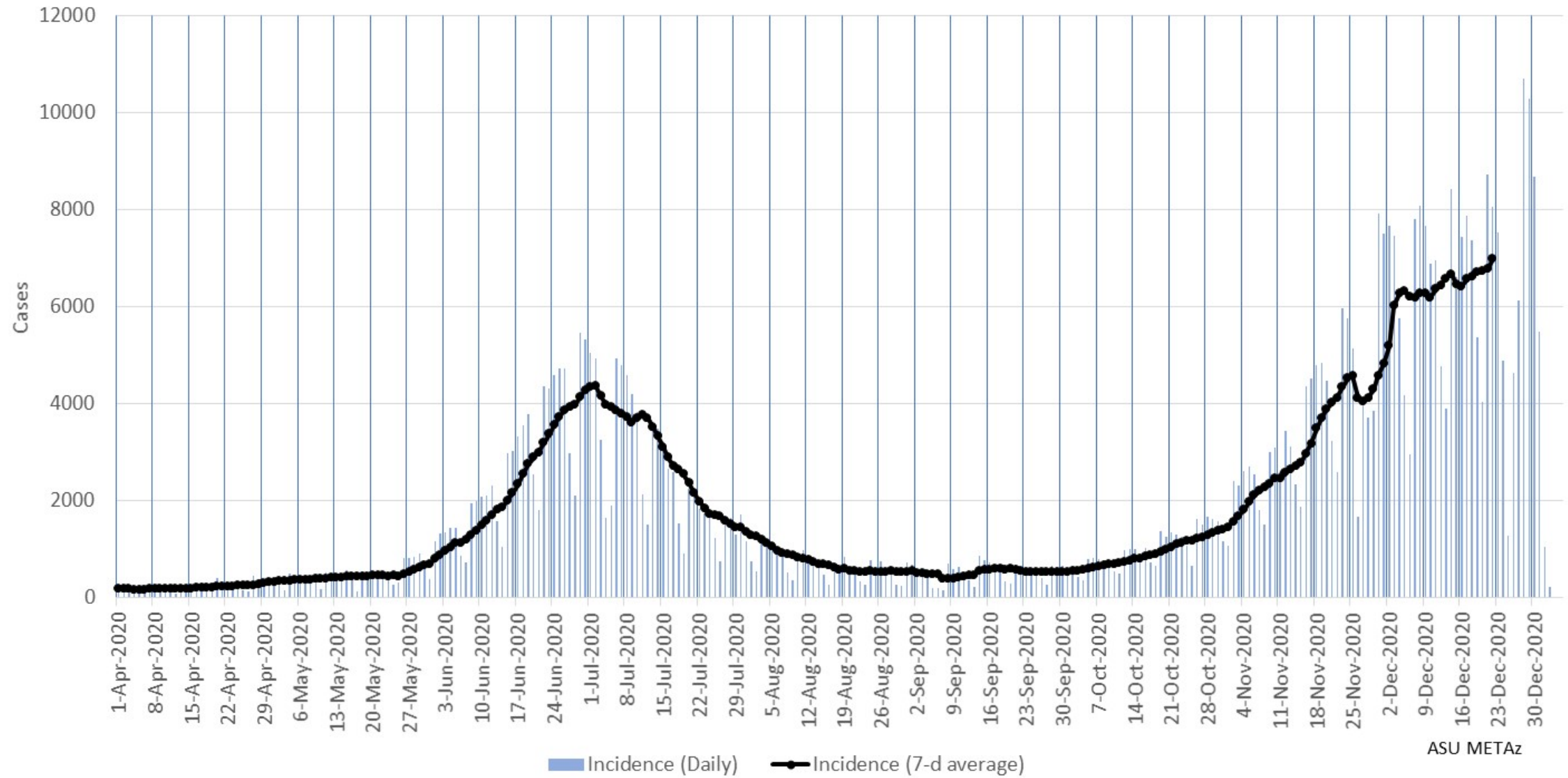


Arizona Statewide Daily COVID-19 Deaths (by date of reporting)

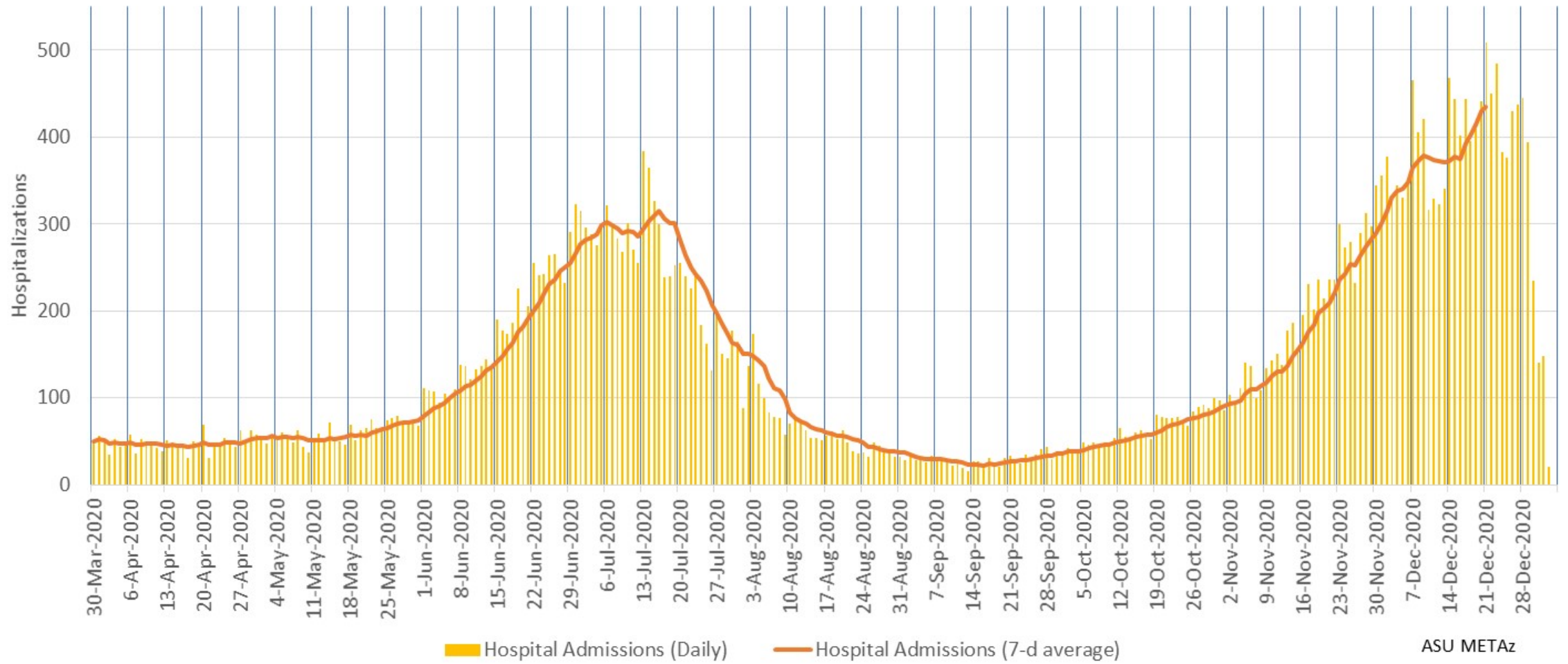


ASU METaz

Arizona Statewide Daily COVID-19 Cases by Date of Sample Collection (Epi Curve)

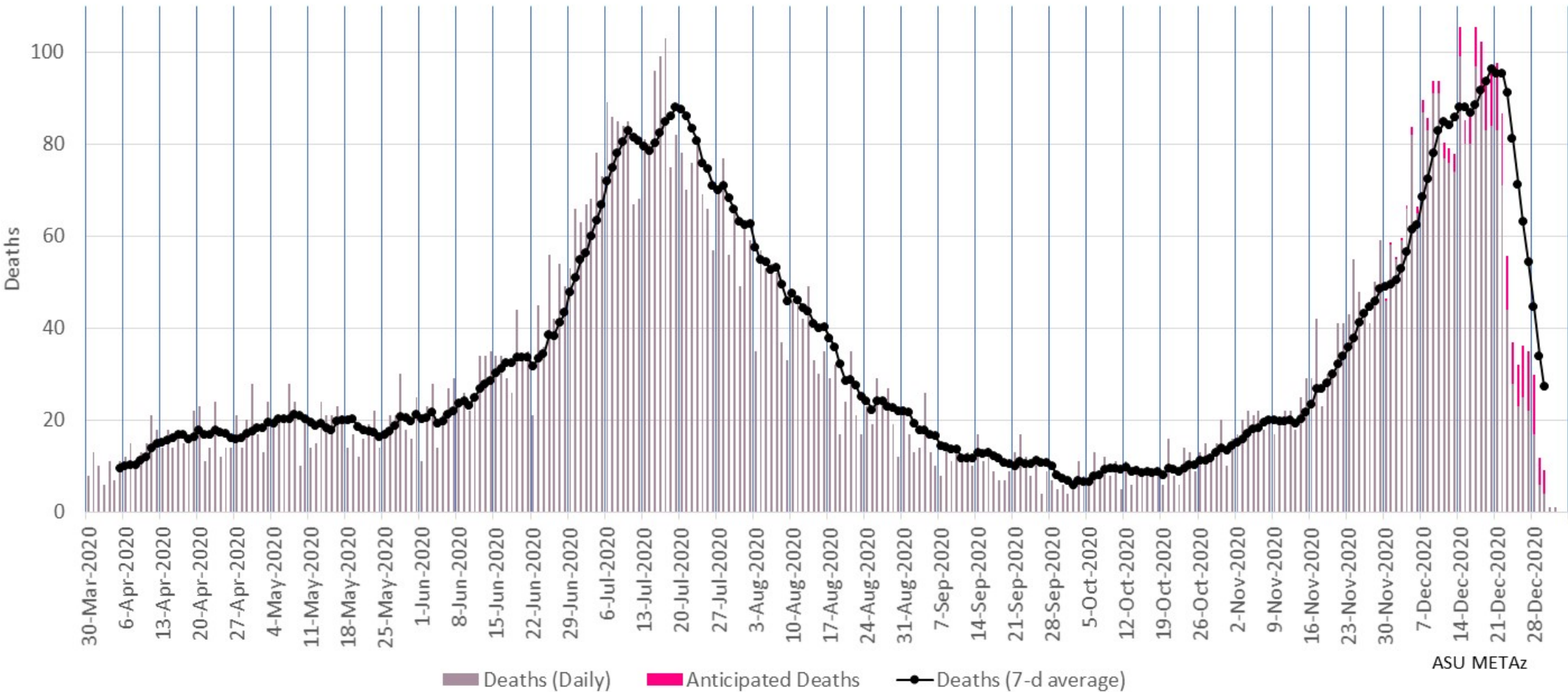


Arizona Statewide Daily COVID-19 Hospitalizations by Date of Hospitalization (Epi Curve)



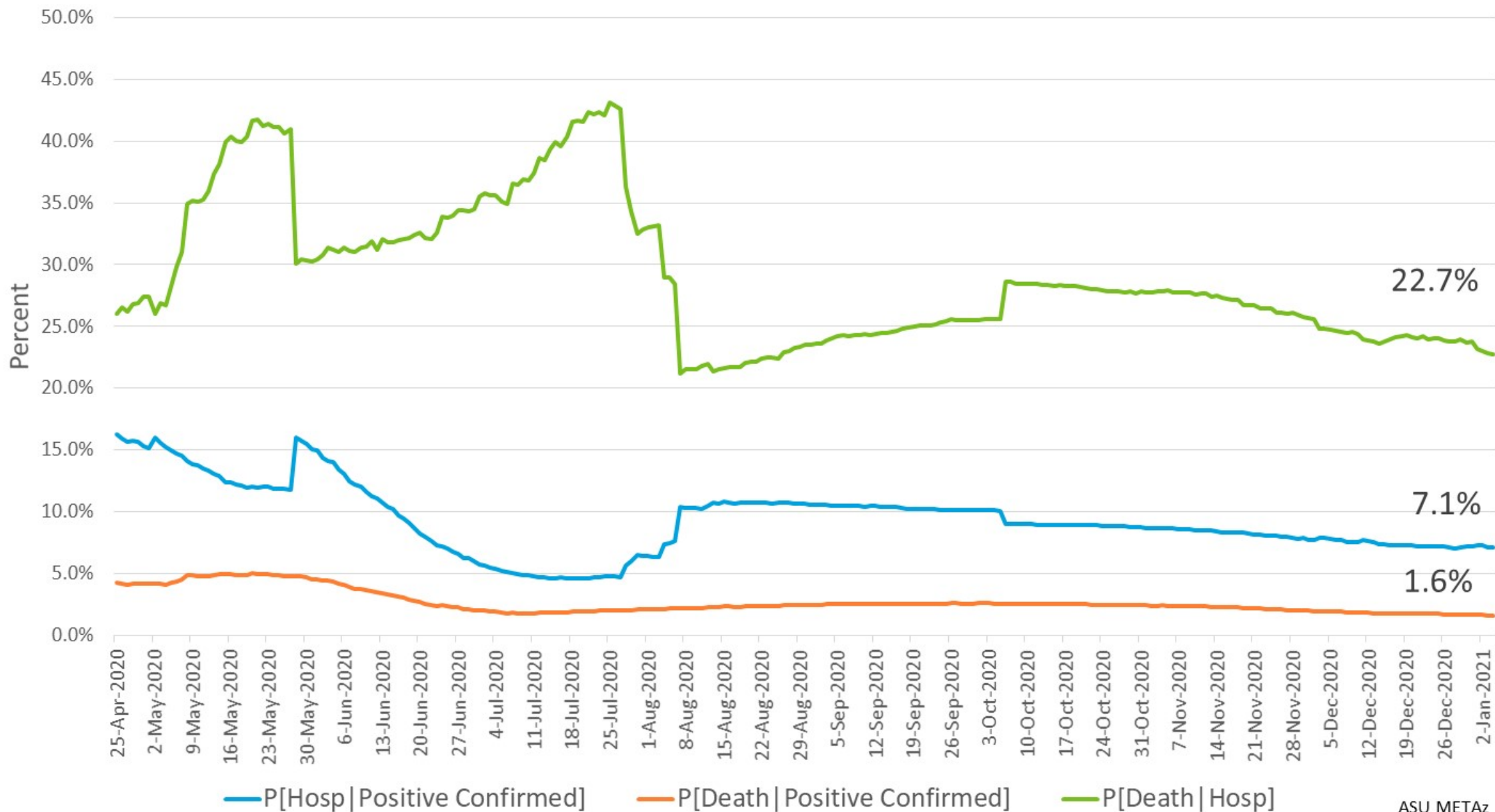
ASU METAz

Arizona Statewide Daily COVID-19 Deaths by Date of Death (Epi Curve)



ASU METAz

Arizona Statewide Case Fatality and Hospitalization Rates

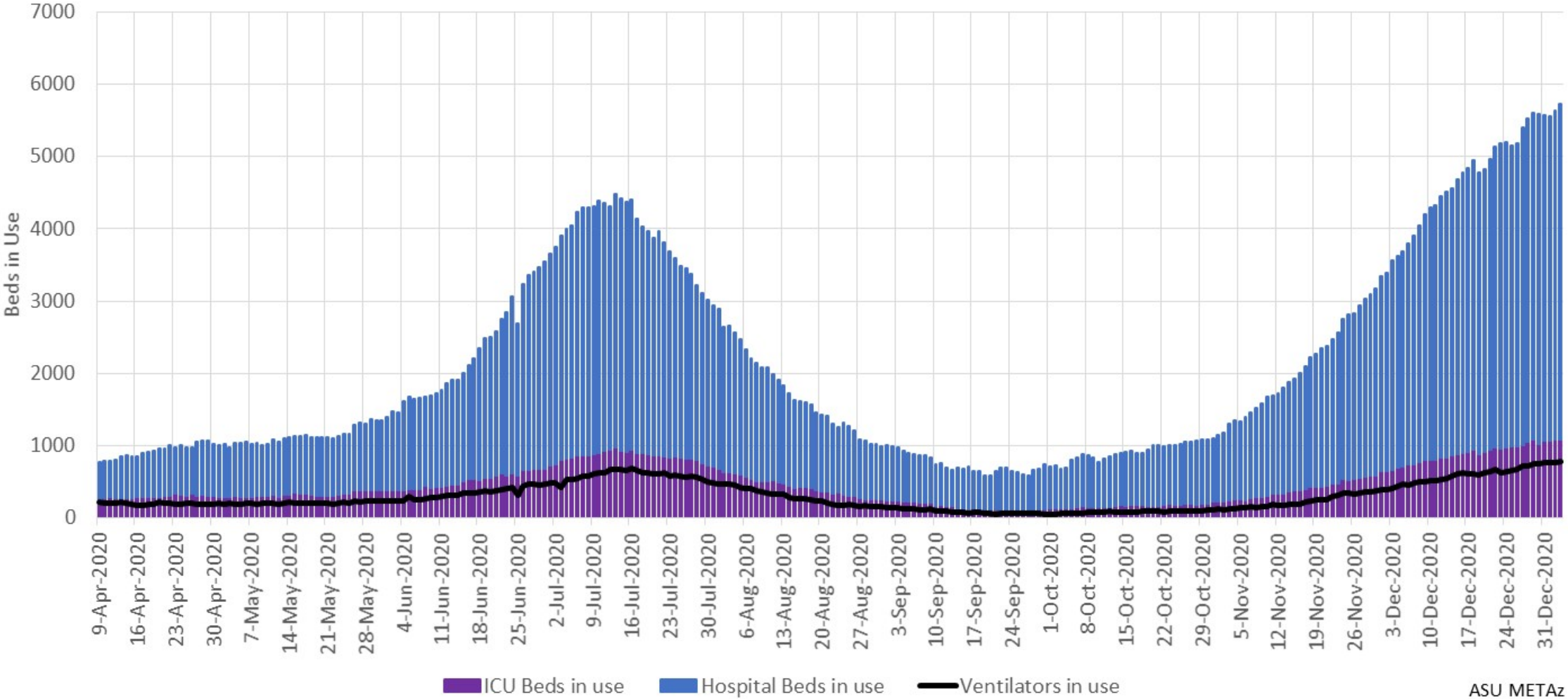


ASU METAz

Hospital Usage

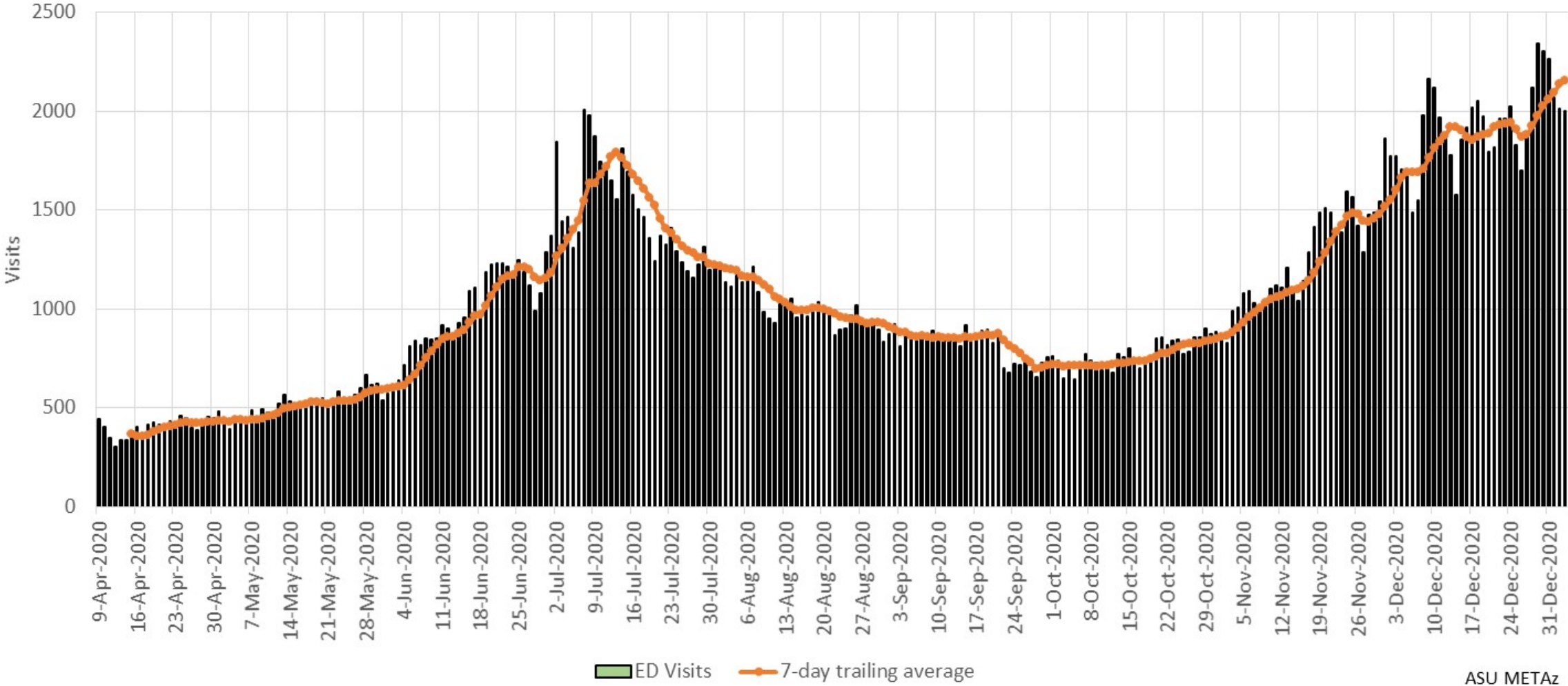


Arizona Statewide COVID-19 Hospital Resource Utilization



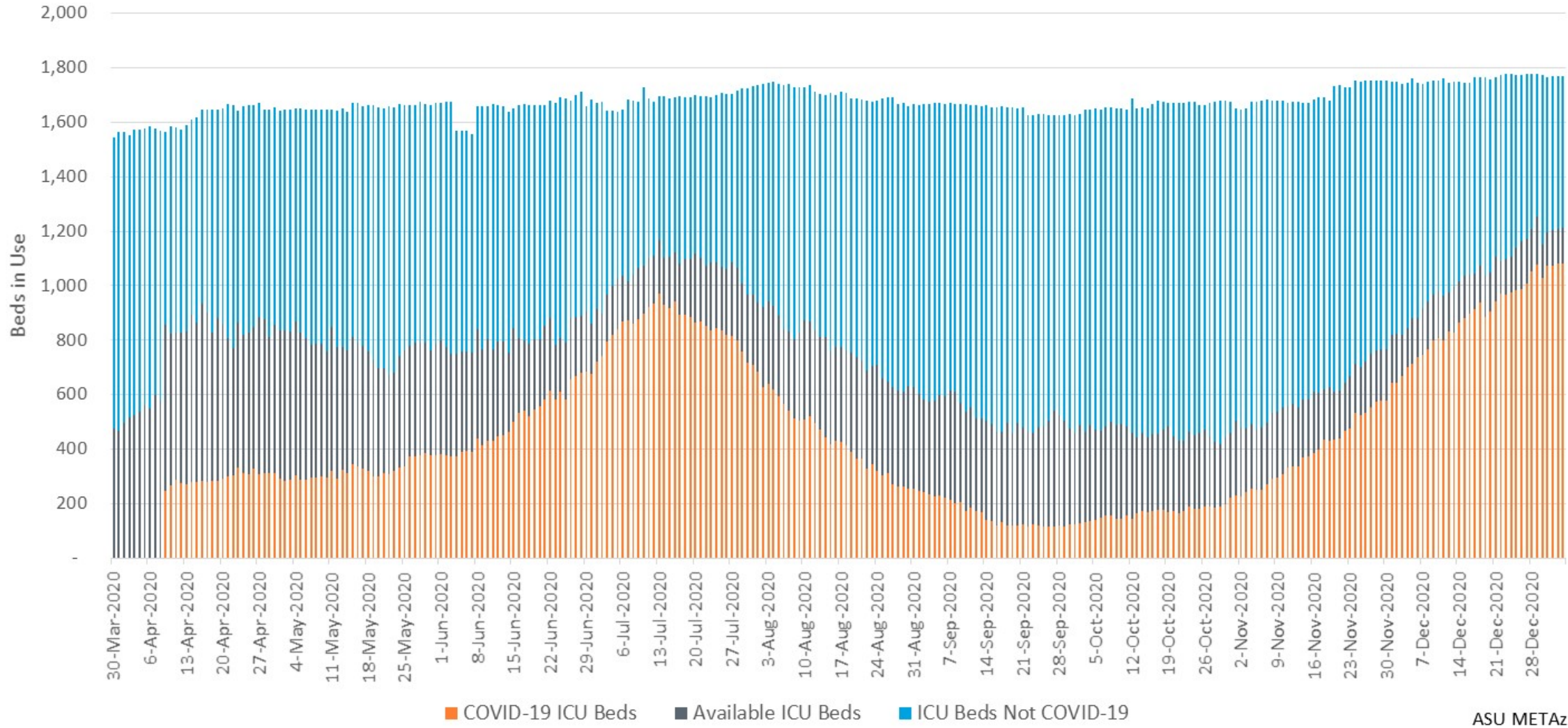
ASU METAz

Arizona Statewide COVID-19 Emergency Department Visits



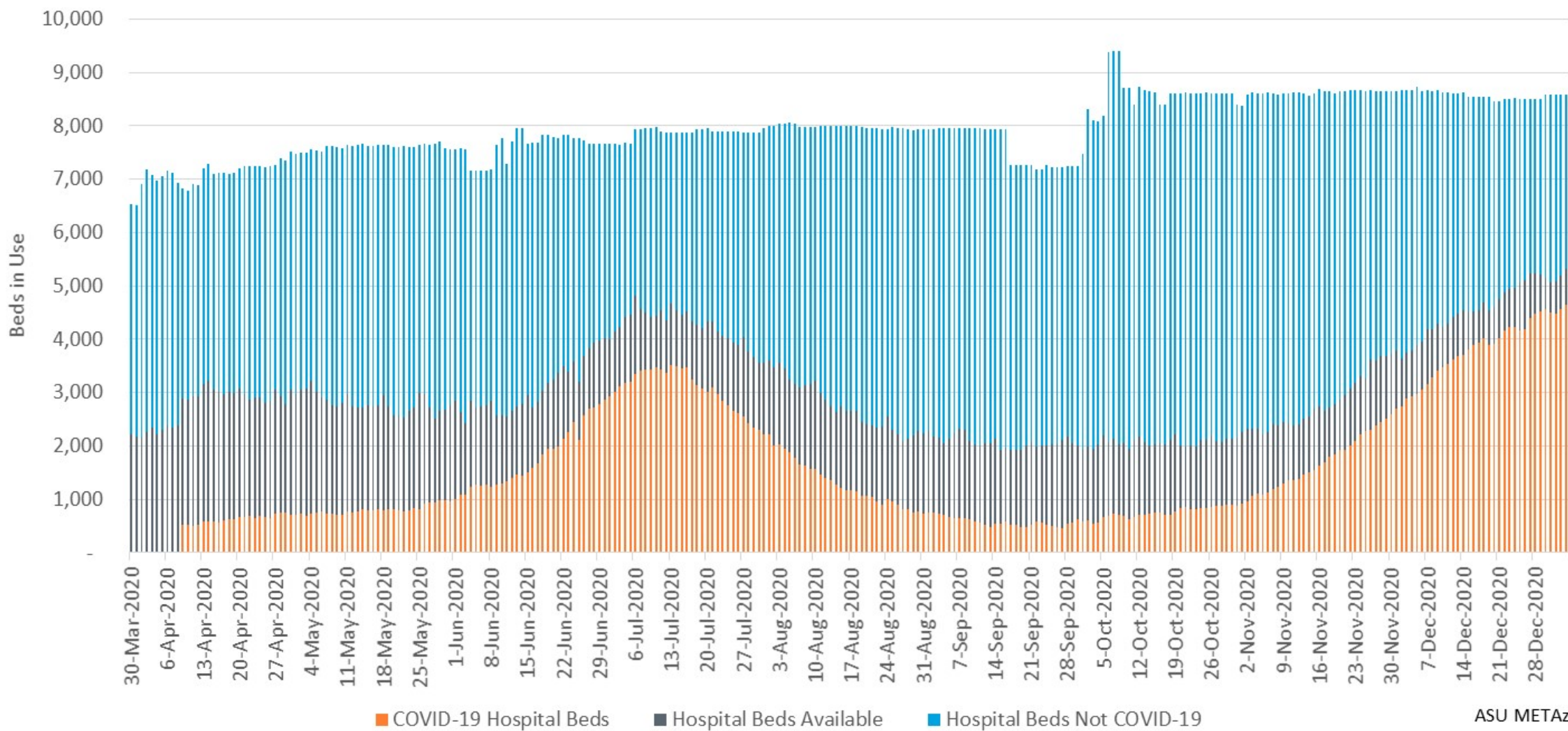
ASU METAz

Arizona Statewide ICU Bed Usage



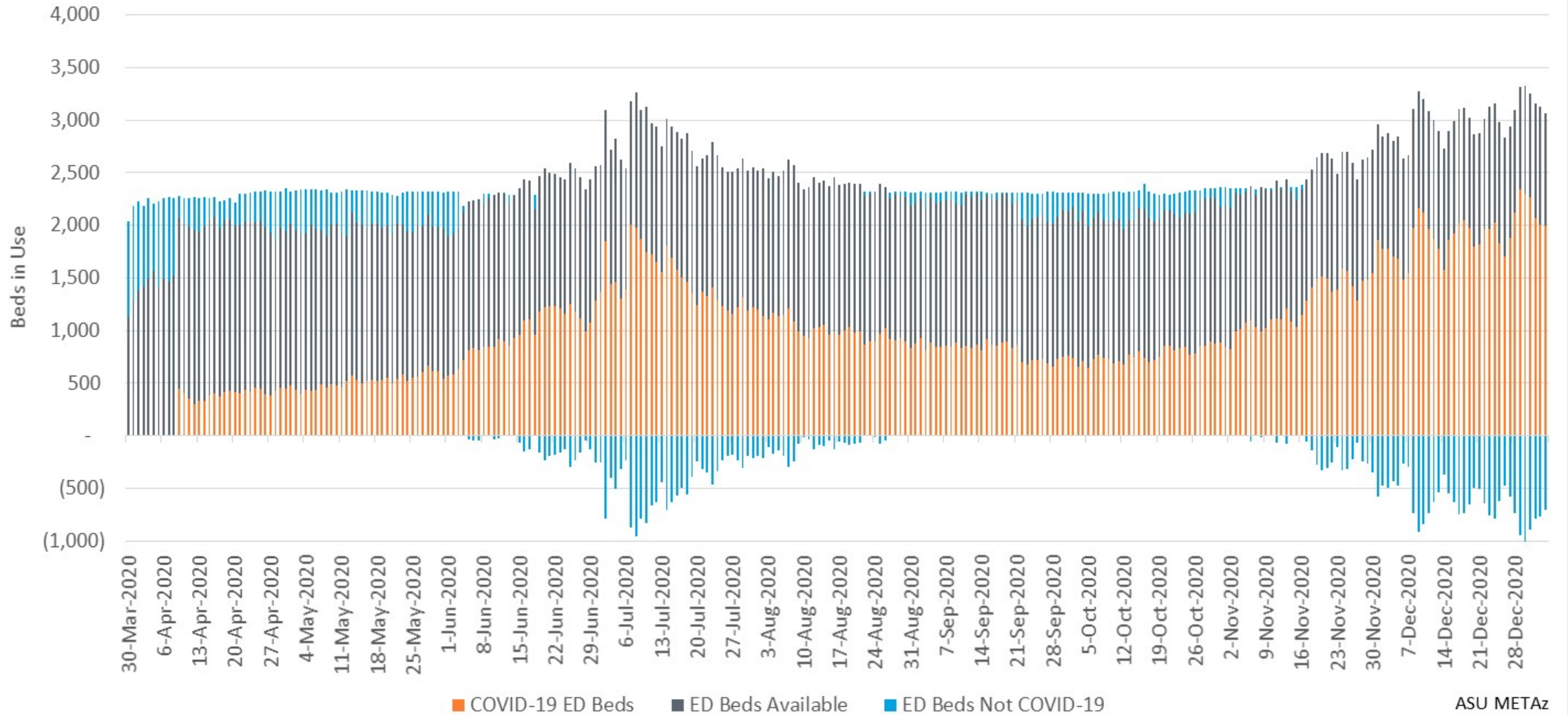
ASU METAz

Arizona Statewide Inpatient Bed Usage



ASU METAz

Arizona Statewide ED Bed Usage



ASU METAz

Where blue bars are below zero, COVID ED patients exceeded total reported ED bed usage