



COVID Epidemiology Situation Update

Tim Lant, PhD, MAS, Heather Ross PhD, DNP, ANP-BC, Anna Muldoon, MPH, Samantha Sokol, Esma Gel, PhD, and Megan Jehn, PhD

December 28, 2020

Summary

December 28, 2020				
	Statewide		Maricopa	
	Reported Today	Cumulative	Reported Today	Cumulative
Cases	10,086	504,423	7,030	309,737
PCR Tests	7,269	2,782,755	4,593	1,646,664
% Positive	138.8%	18.1%	153.1%	13.1%
Hospitalizations	240	35,630	182	21,954
Deaths	42	8,469	41	4,948

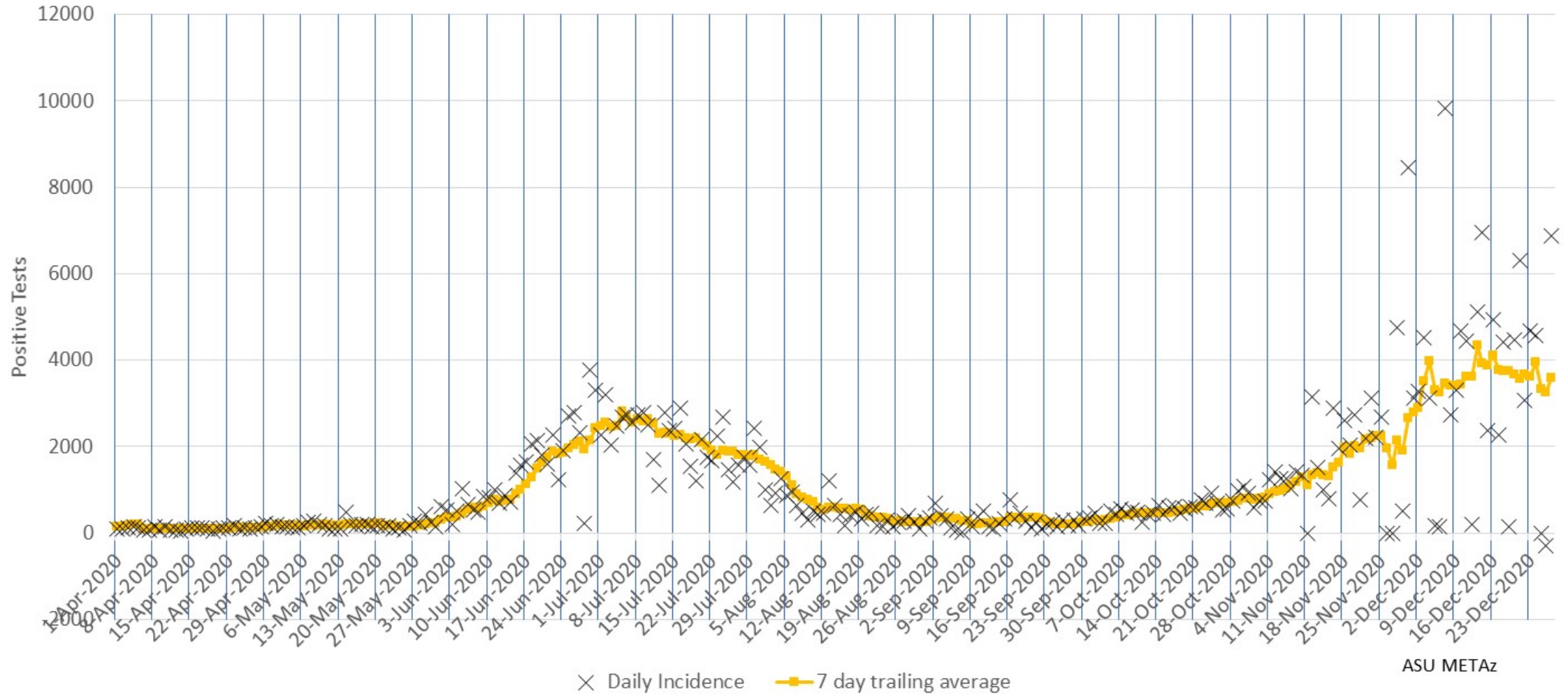
All data pulled from azdhs.gov. Numbers may not match Maricopa county data.

- Today's statewide case count is 10,086 with 7,030 cases (70%) in Maricopa County, higher than population distribution. The 7-day average for reported cases is now 6,154. More cases were reported today than diagnostic tests, giving today's positive percentage of 138.8%, likely due to reporting lags over the holidays.
- The epi curve appears to have plateaued in Maricopa County and statewide at a level higher than the previous wave in Arizona. Peak cases by incident date is 8,252 on 12/14.
- Due to significant irregularities in ADHS data reporting patterns, 7-day average positivity is more reliable than day-to-day positivity. 7-day average positivity has remained above 30% for more than 3 weeks, indicating sustained uncontrolled spread.
- Hospital utilization continues to increase. Bed usage for COVID-19 is 52% of inpatient beds (highest number of COVID-occupied beds at any point during the pandemic) and 57% of ICU beds statewide. ICU beds in use (1,007) have exceeded the last peak. Current hospital utilization is 90% for inpatient beds and 91% for ICU beds including COVID and non-COVID utilization. Hospitals statewide are experiencing extreme shortages with many facilities on divert status.
- Declining hospital admission rates as a percentage of confirmed cases is a concerning marker of severe system overload.

Maricopa County Analysis

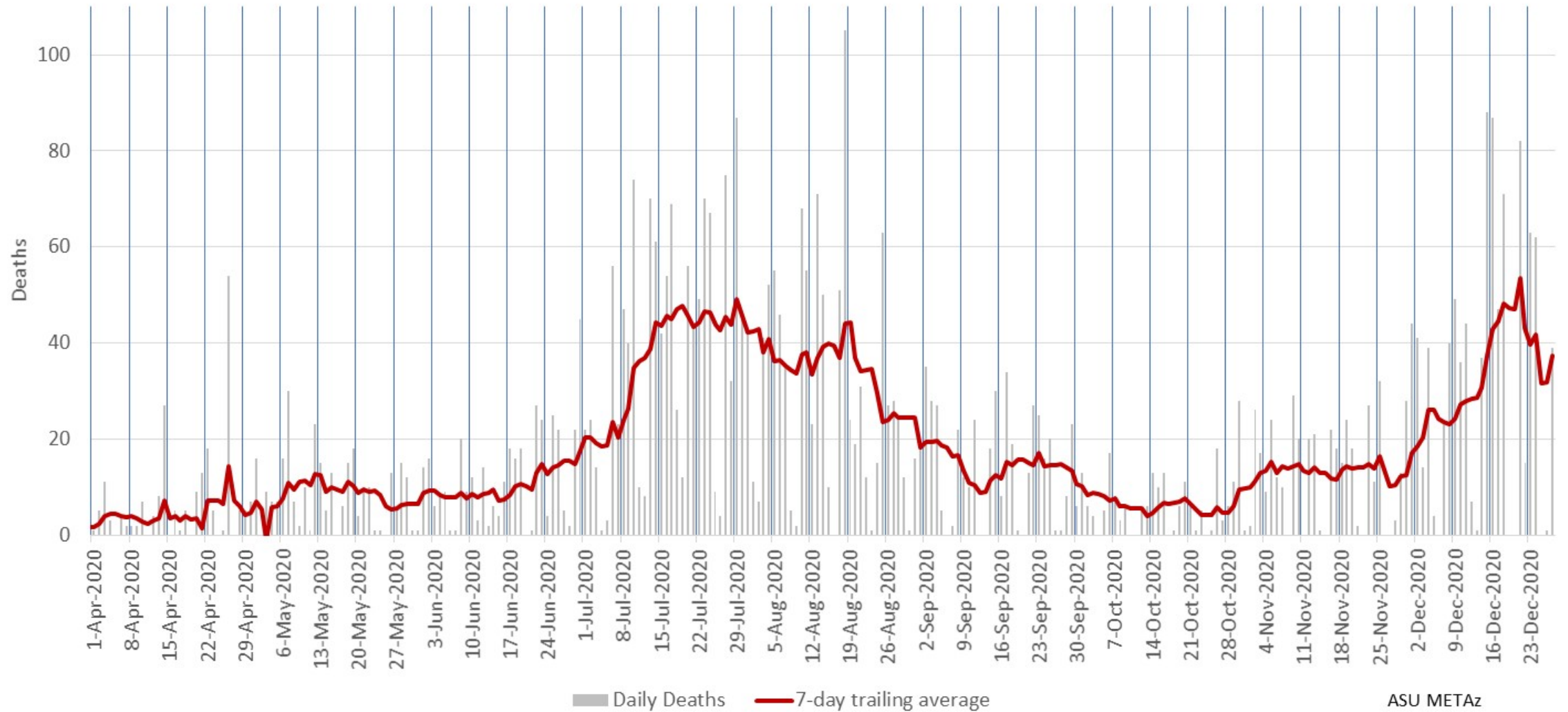


Maricopa County Daily COVID-19 Positive Tests Results Reported (confirmed incidence)



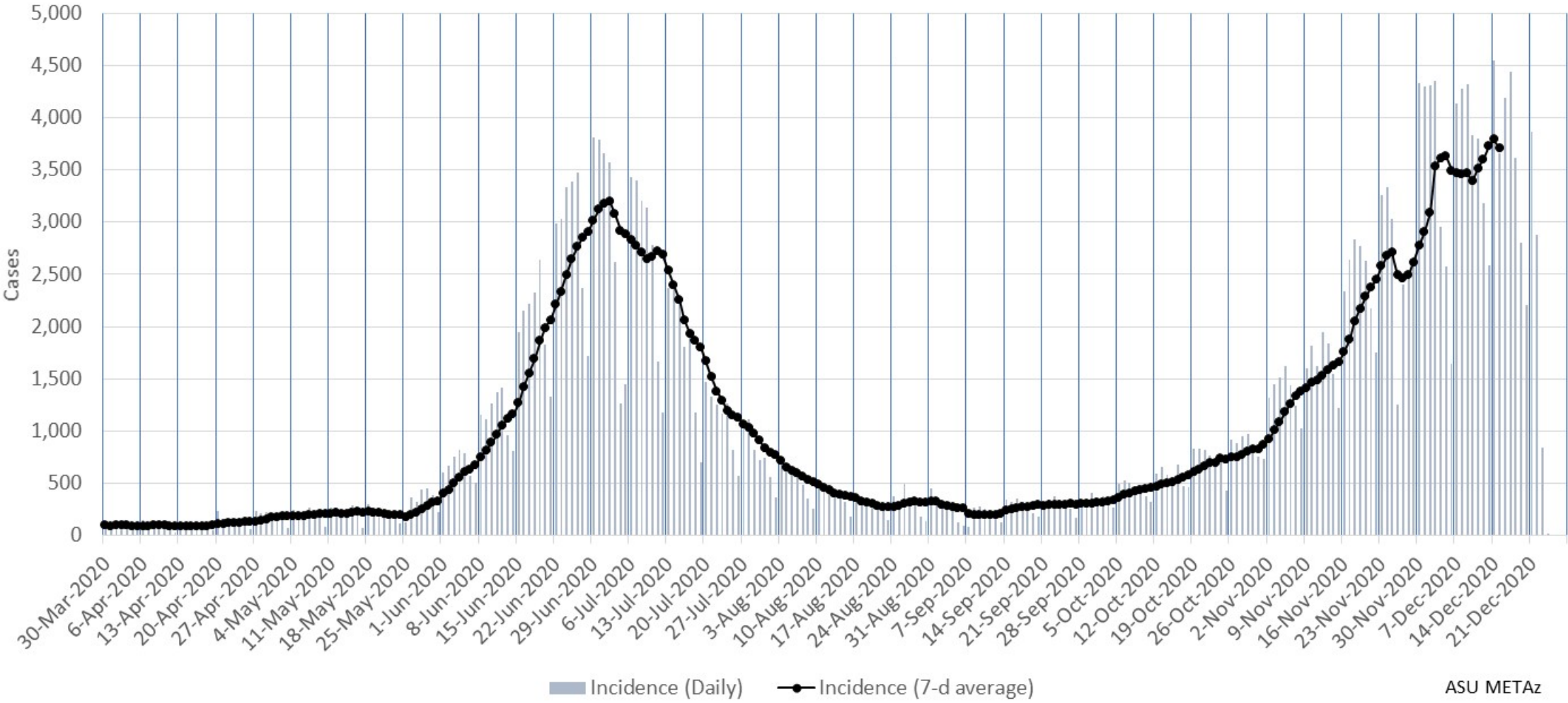
Due to the holiday, 2 days of data were held (Nov 26 & 27) and reported on Nov 28.

Maricopa County Daily COVID-19 Deaths (by date of reporting)



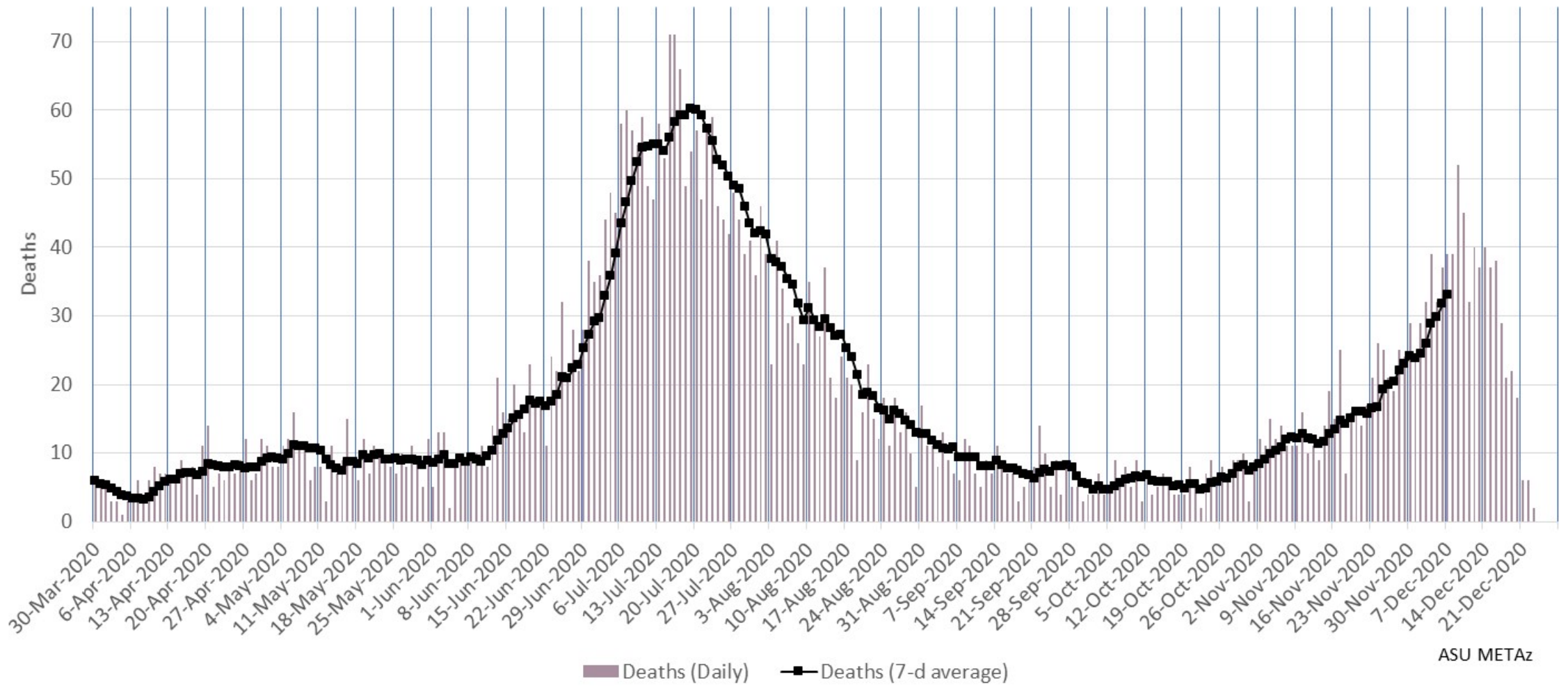
Due to the holiday, 2 days of data were held (Nov 26 & 27) and reported on Nov 28.

Maricopa County Daily COVID-19 Cases by Date of Sample Collection (Epi Curve)



ASU METAz

Maricopa County Daily COVID-19 Deaths by Date of Death (Epi Curve)



ASU METAz

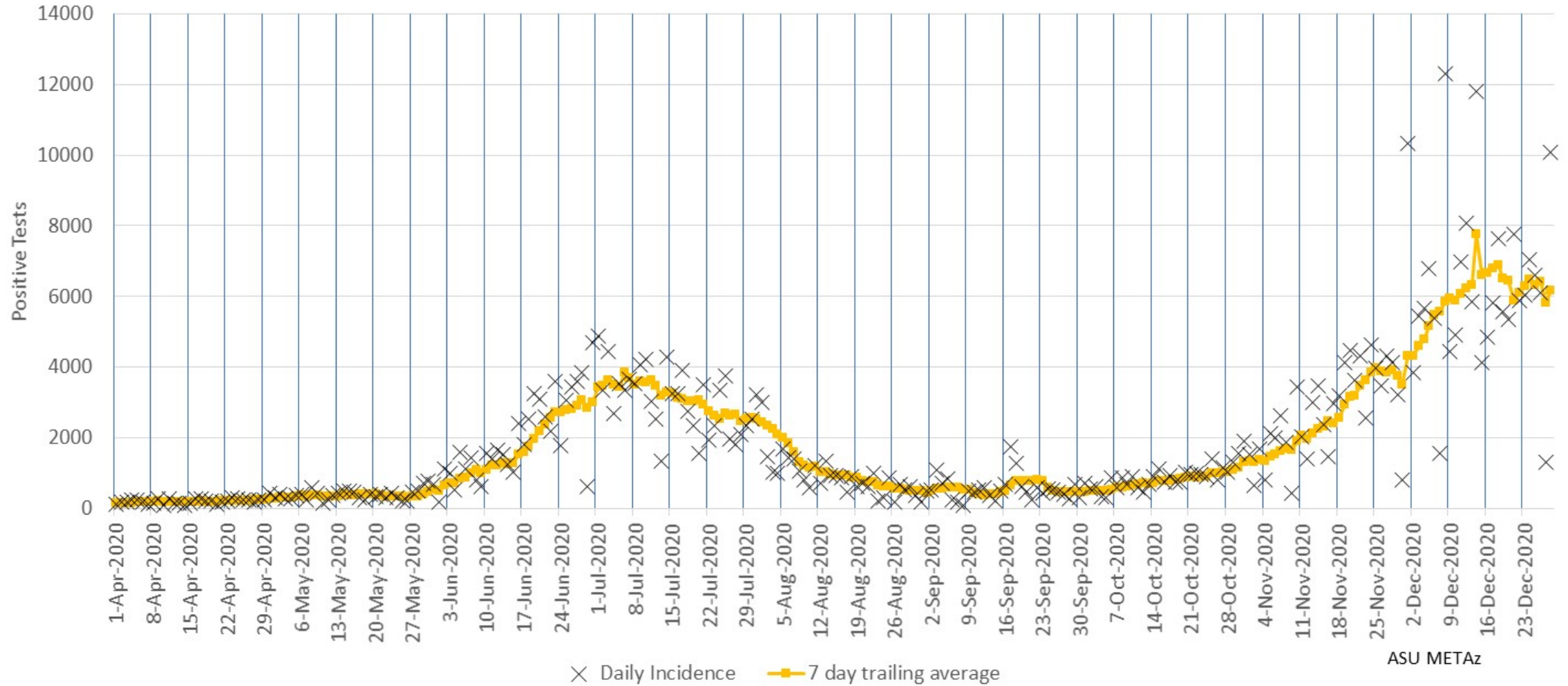
Arizona Statewide Analysis



Epidemiology

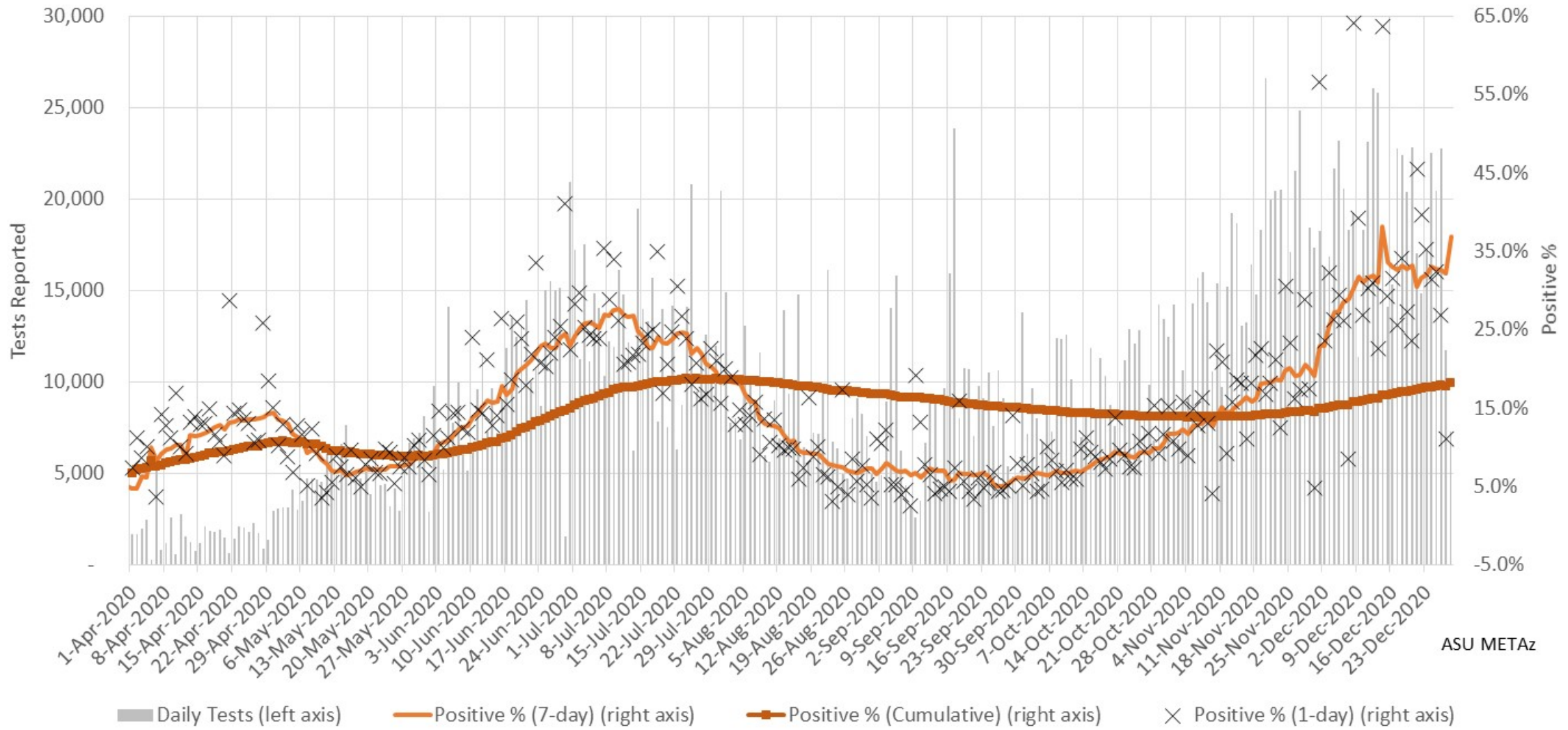


Arizona Statewide Daily COVID-19 Positive Tests Results Reported (confirmed incidence)



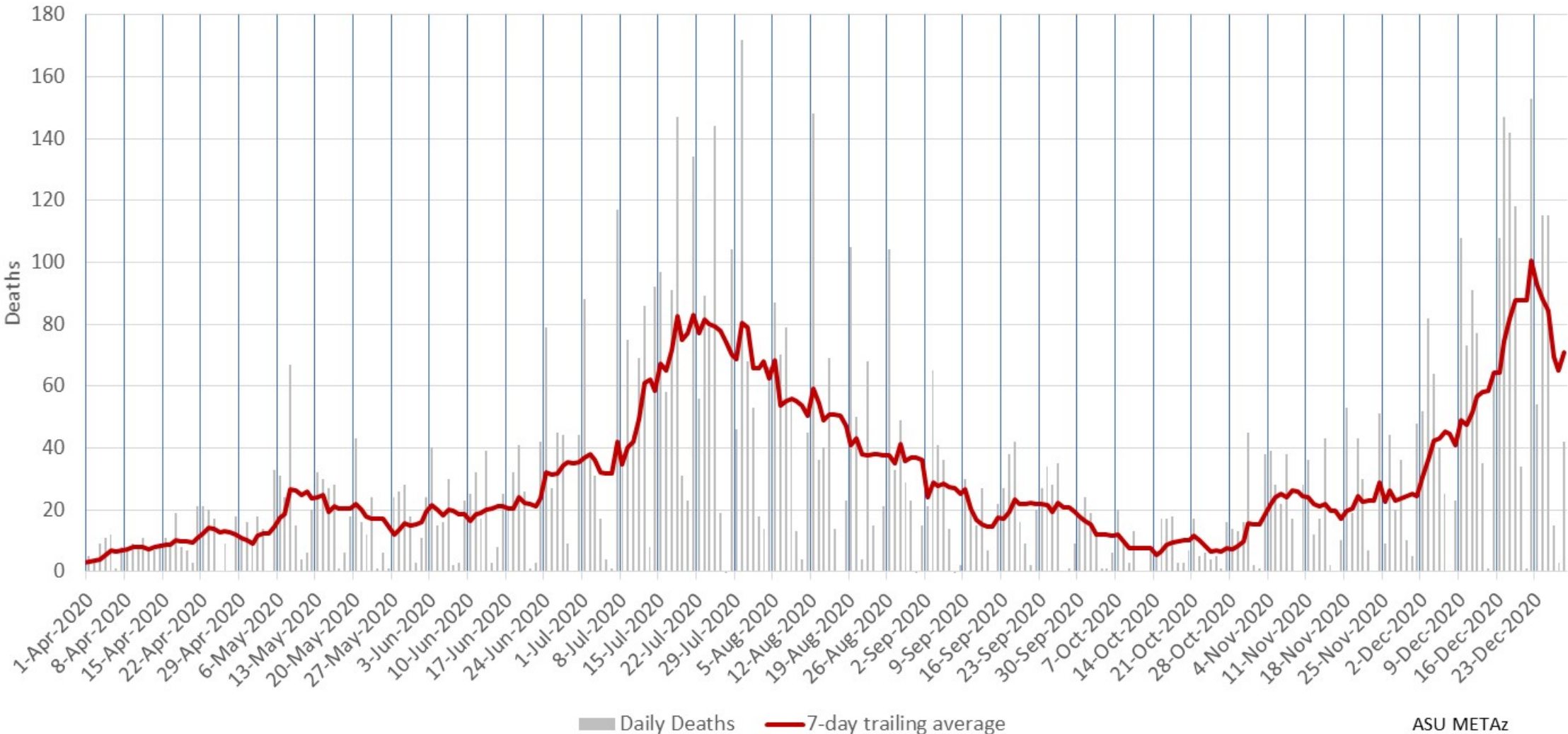
ASU METAz

Arizona Statewide Rolling weekly positive COVID-19 test rate



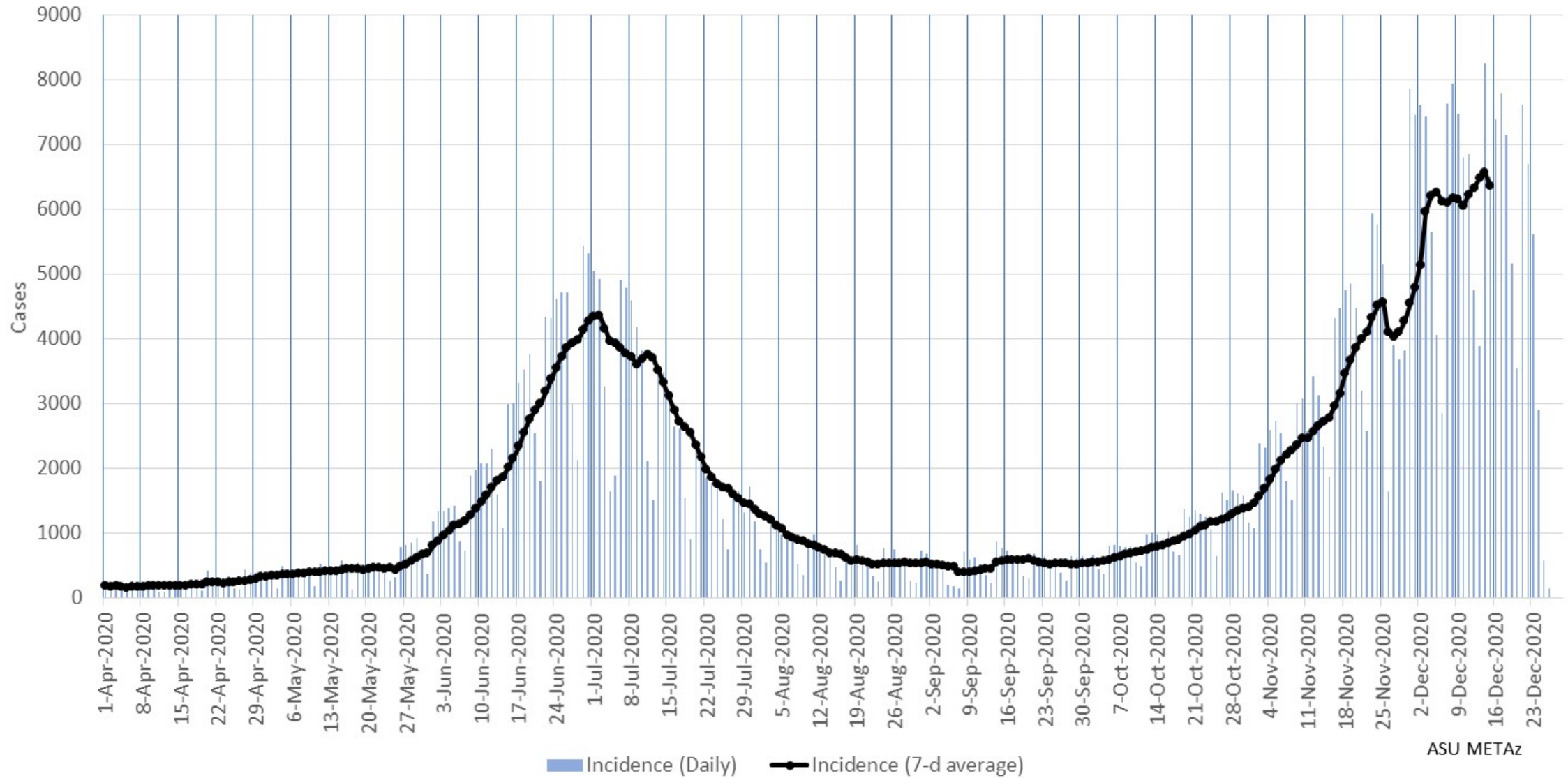
ASU METAz

Arizona Statewide Daily COVID-19 Deaths (by date of reporting)



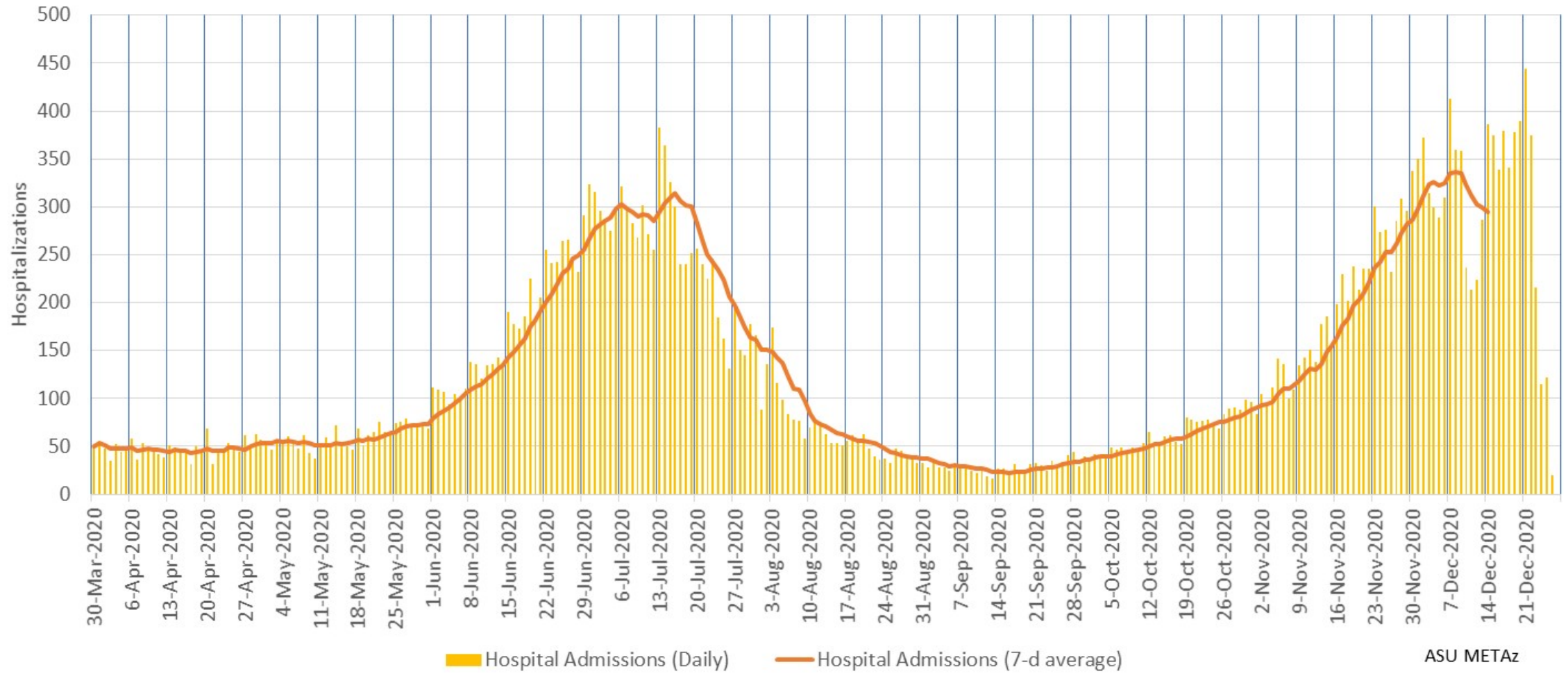
ASU METaz

Arizona Statewide Daily COVID-19 Cases by Date of Sample Collection (Epi Curve)



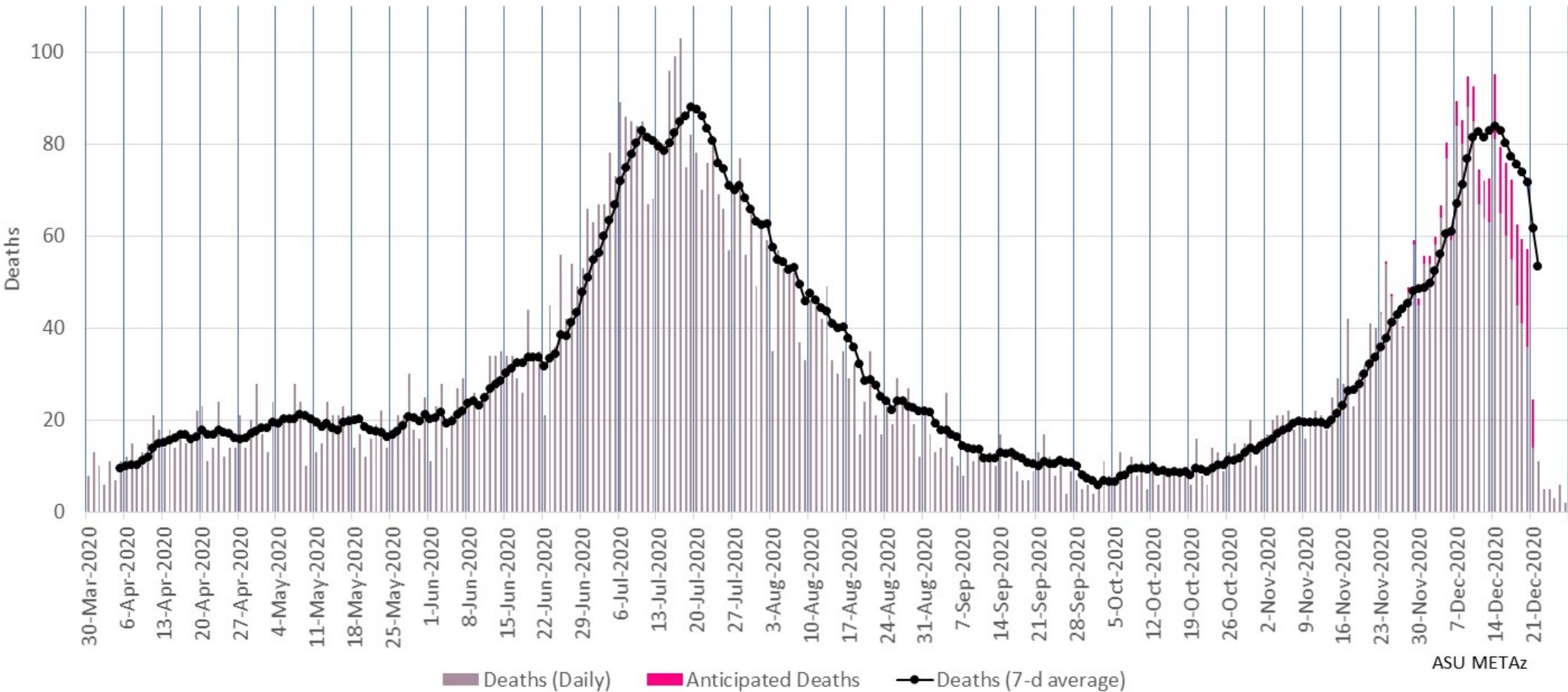
ASU METAz

Arizona Statewide Daily COVID-19 Hospitalizations by Date of Hospitalization
(Epi Curve)



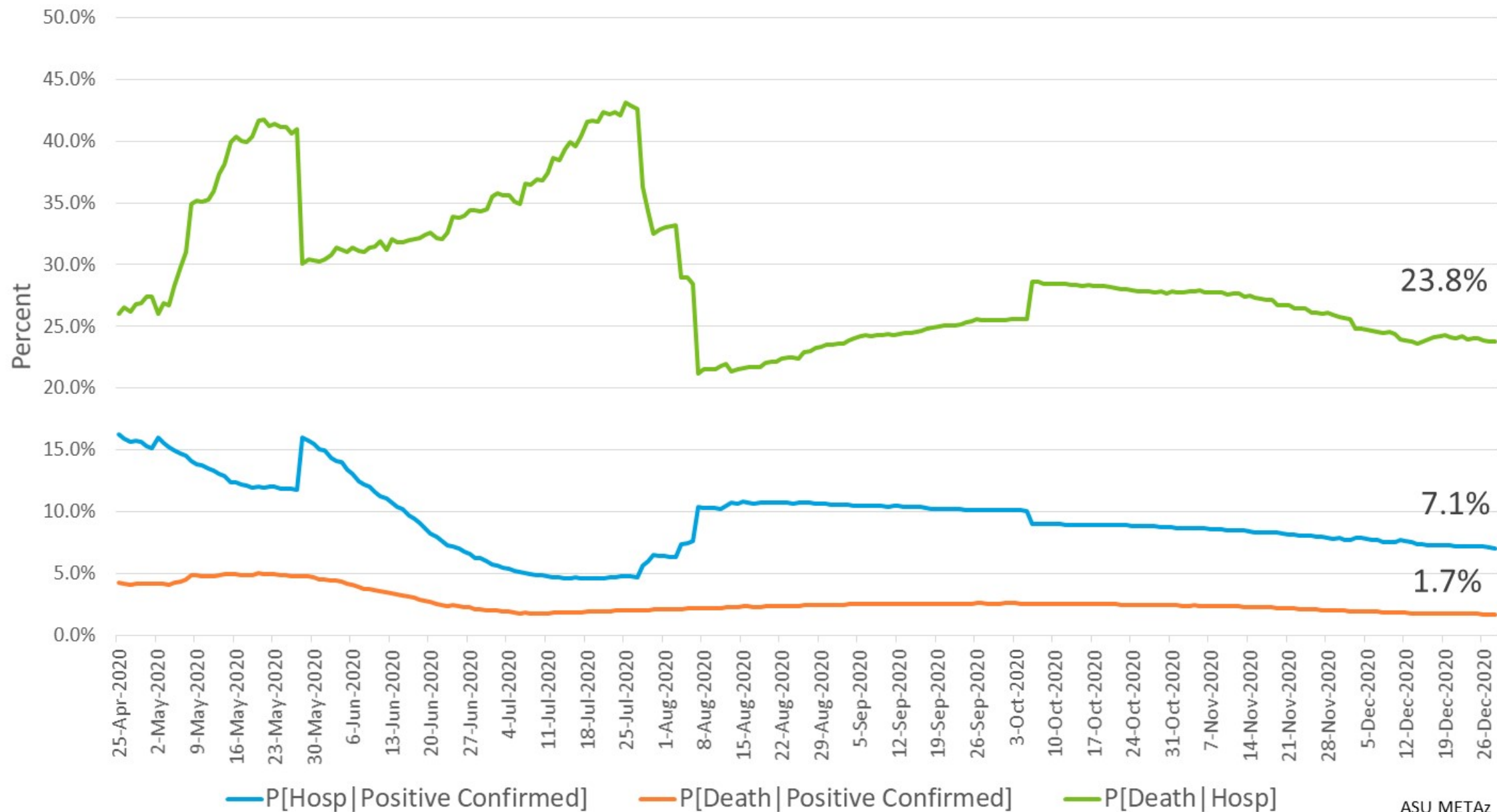
ASU METAz

Arizona Statewide Daily COVID-19 Deaths by Date of Death (Epi Curve)



ASU METAz

Arizona Statewide Case Fatality and Hospitalization Rates

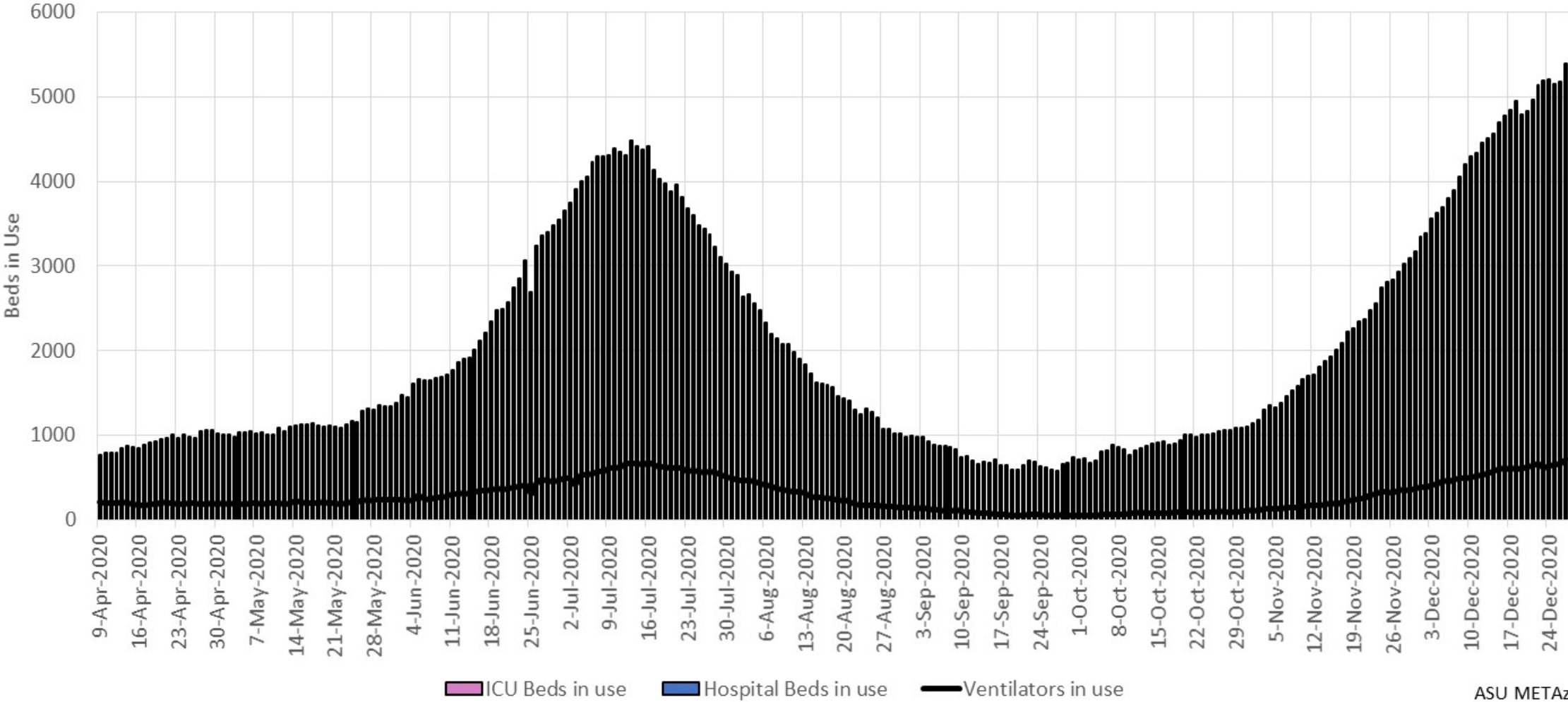


ASU METaz

Hospital Usage

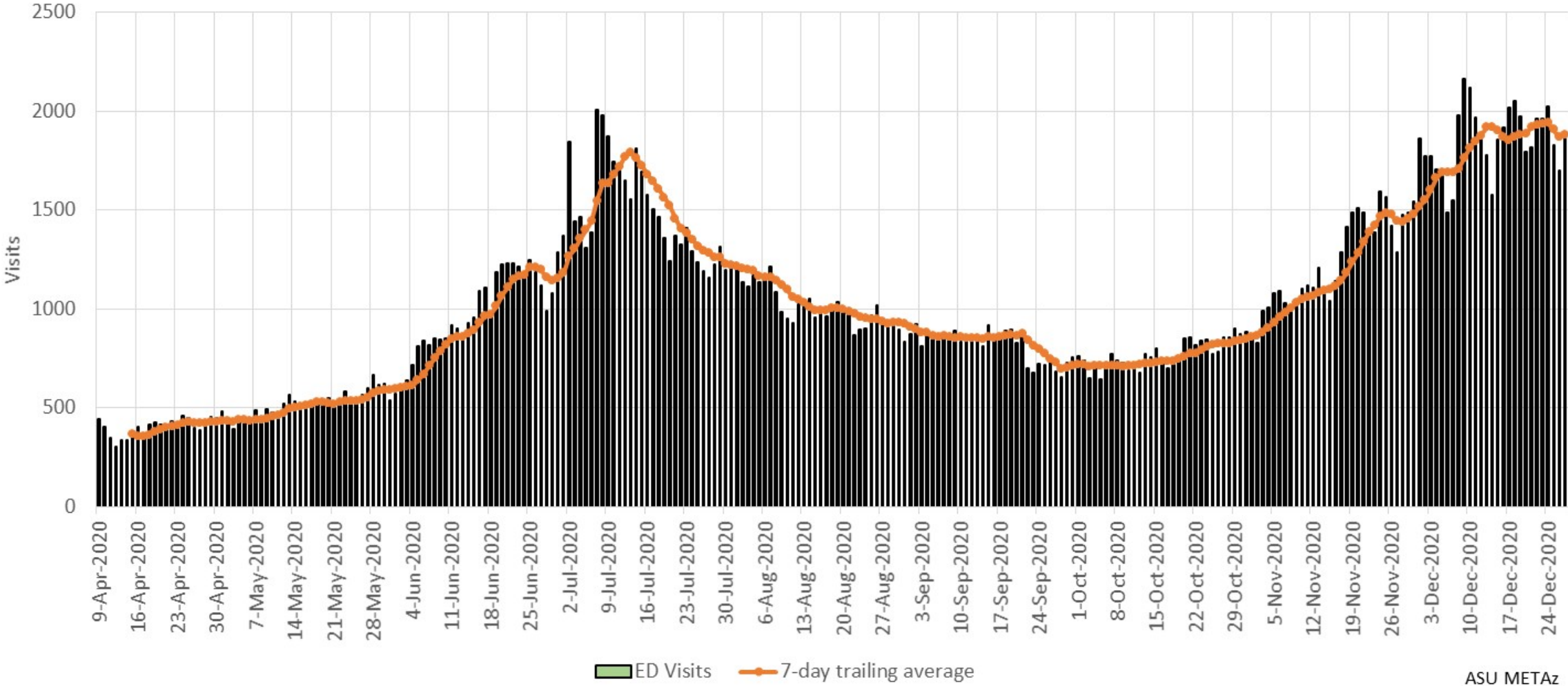


Arizona Statewide COVID-19 Hospital Resource Utilization



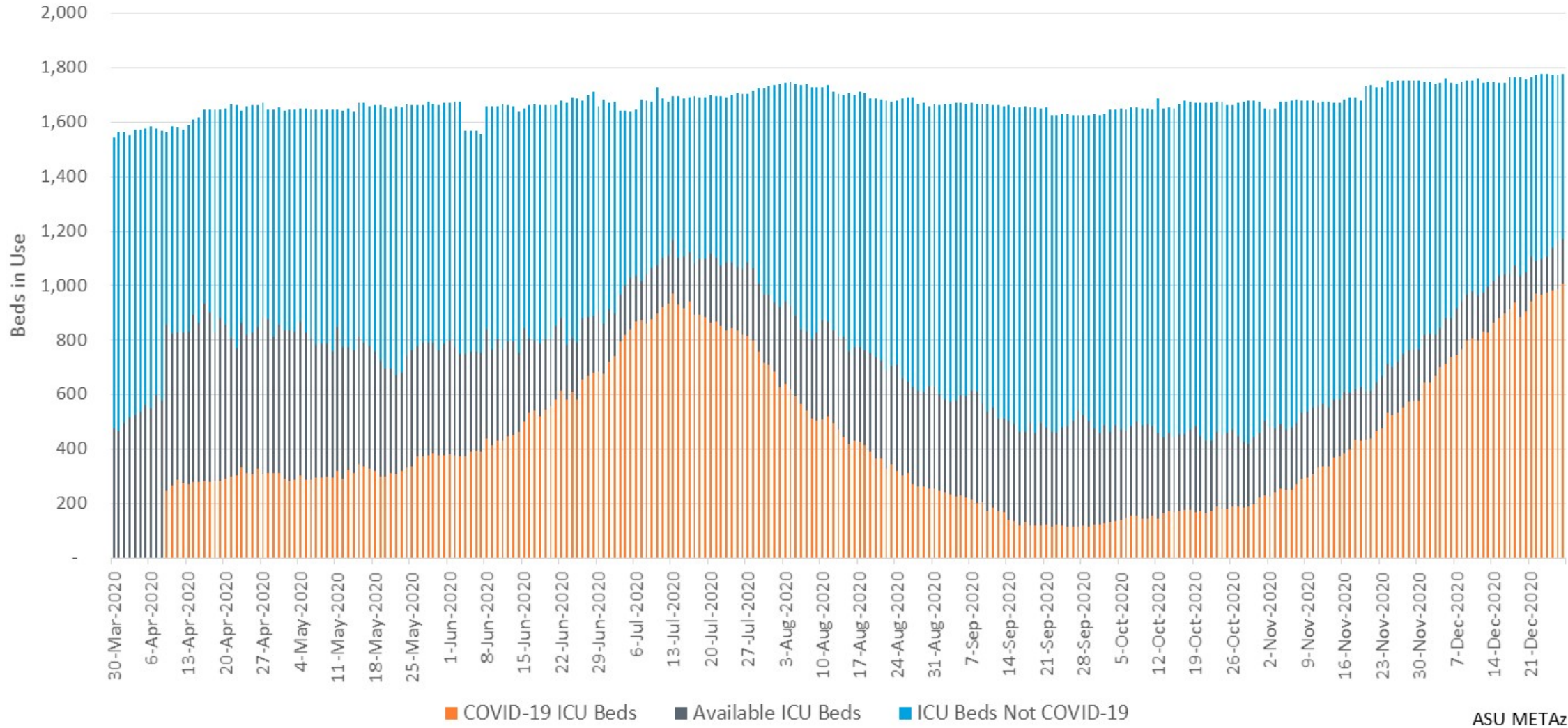
ASU METaz

Arizona Statewide COVID-19 Emergency Department Visits



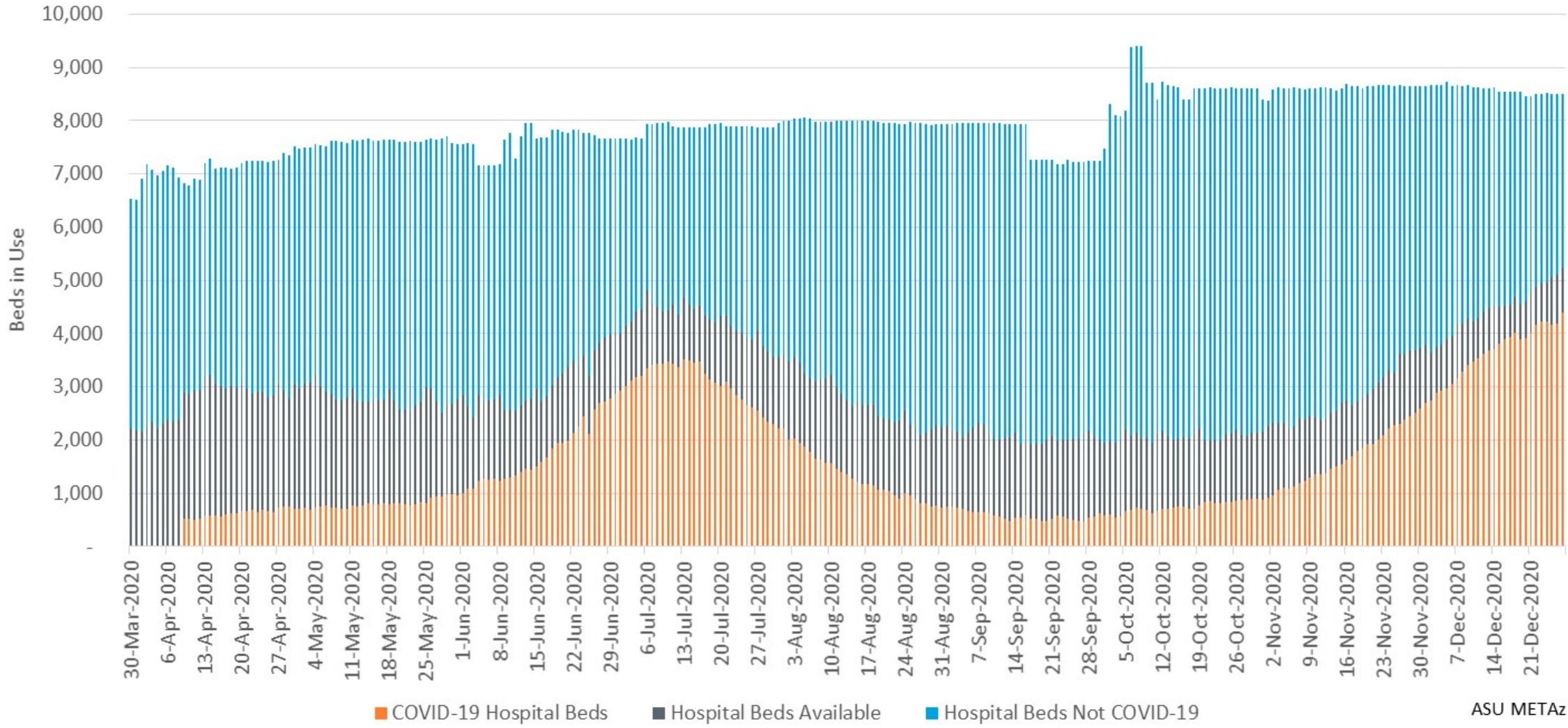
ASU METAz

Arizona Statewide ICU Bed Usage



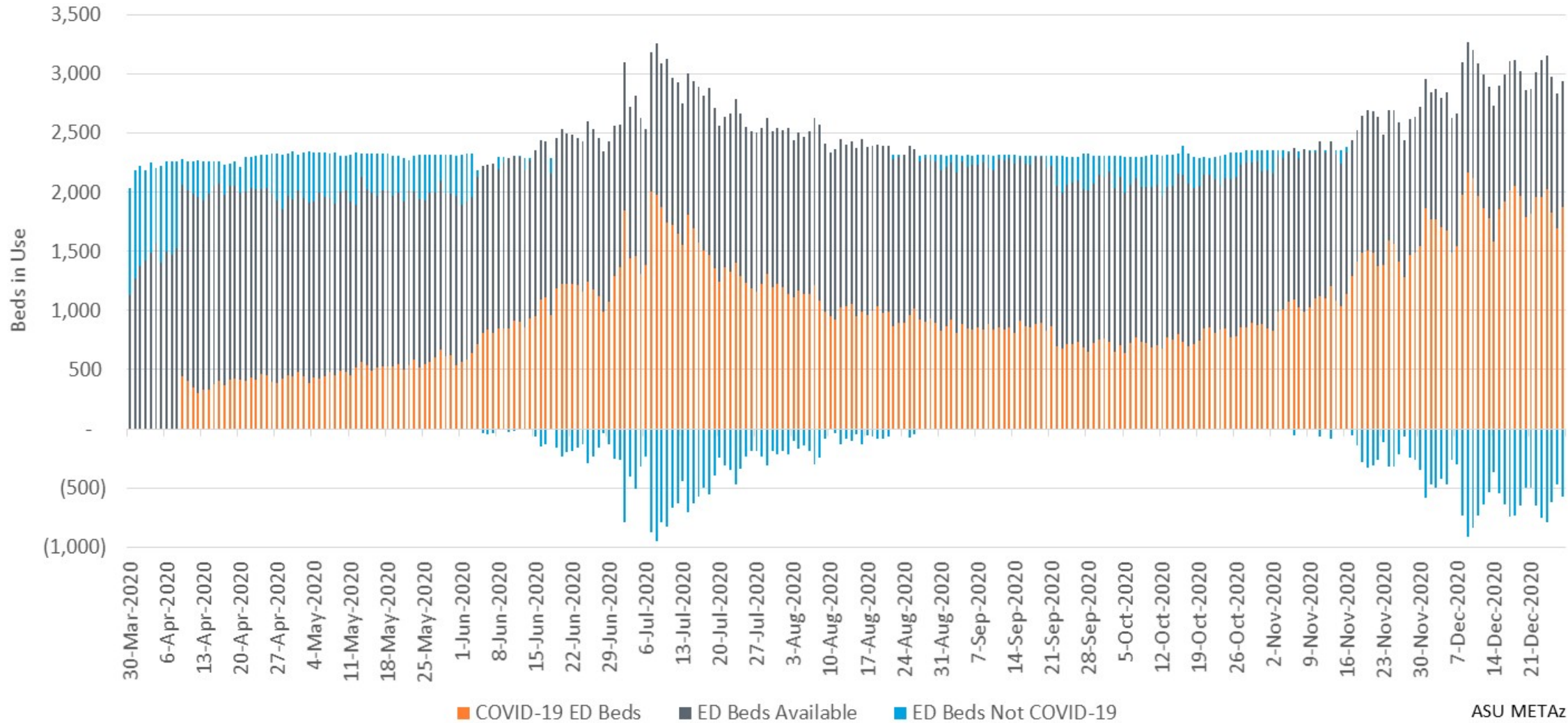
ASU METAz

Arizona Statewide Inpatient Bed Usage



ASU METAz

Arizona Statewide ED Bed Usage



Where blue bars are below zero, COVID ED patients exceeded total reported ED bed usage