



# COVID Epidemiology Situation Update

Tim Lant, PhD, MAS, Heather Ross PhD, DNP, ANP-BC, Anna Muldoon, MPH, Samantha Sokol, Esma Gel, PhD, and Megan Jehn, PhD

**December 17, 2020**

# Summary

December 17, 2020				
	Statewide		Maricopa	
	Reported Today	Cumulative	Reported Today	Cumulative
<b>Cases</b>	5,817	435,036	3,548	269,744
<b>PCR Tests</b>	22,754	2,583,394	14,862	1,531,928
<b>% Positive</b>	25.6%	16.8%	23.9%	12.5%
<b>Hospitalizations</b>	383	31,851	270	19,533
<b>Deaths</b>	147	7,677	95	4,542

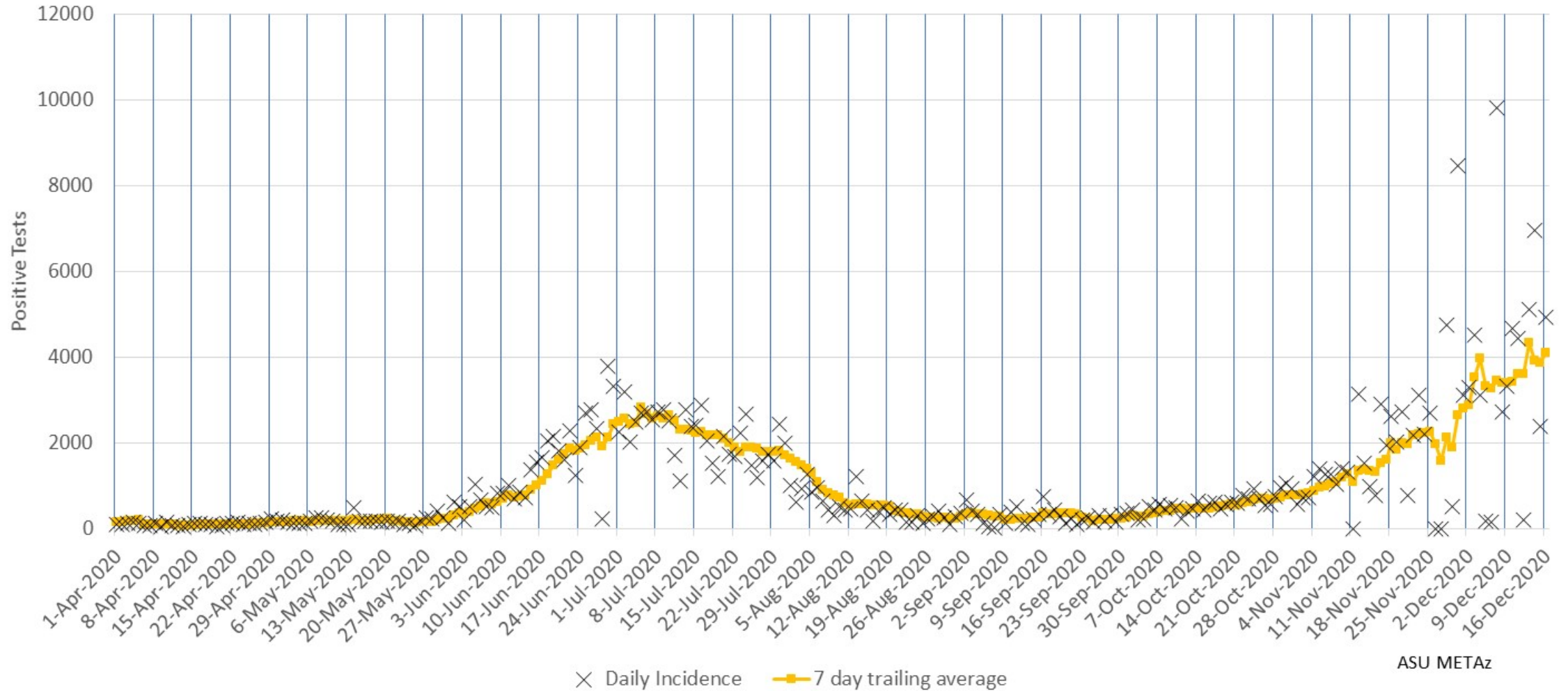
*All data pulled from azdhs.gov. Numbers may not match Maricopa county data.*

- Today's statewide case count is 5,817 with 3,548 cases (61%) in Maricopa County, slightly higher than population distribution. The 7-day average for reported cases is now 6,787.
- The epi curve continues to increase in Maricopa County and statewide with continued exponential growth exceeding the previous wave in Arizona. Peak cases by incident date is 7,823 on 11/30.
- Due to significant irregularities in ADHS data reporting patterns, 7-day average positivity is more reliable than day-to-day positivity. 7-day average positivity has remained above 30% for more than a week, indicating sustained uncontrolled spread.
- Hospital utilization continues to increase with remaining bed capacity lower than at any time since the start of the pandemic. Bed usage for COVID-19 is at 45% of inpatient beds (highest number of COVID-occupied beds at any point during the pandemic) and 51% of ICU beds statewide. Current hospital utilization is 93% for inpatient beds and 92% for ICU beds including COVID and non-COVID utilization. This is the highest level of hospital occupancy with the lowest level of remaining hospital capacity statewide at any point since the beginning of the pandemic. After a few days of dropping numbers, ED visits for COVID have rebounded and remain at levels similar to the peak of the first wave in June/July. Hospitals statewide are experiencing extreme shortages in bed space and staff.
- Phase 1A vaccine administration began today for healthcare workers including first responders in Maricopa County.

# Maricopa County Analysis

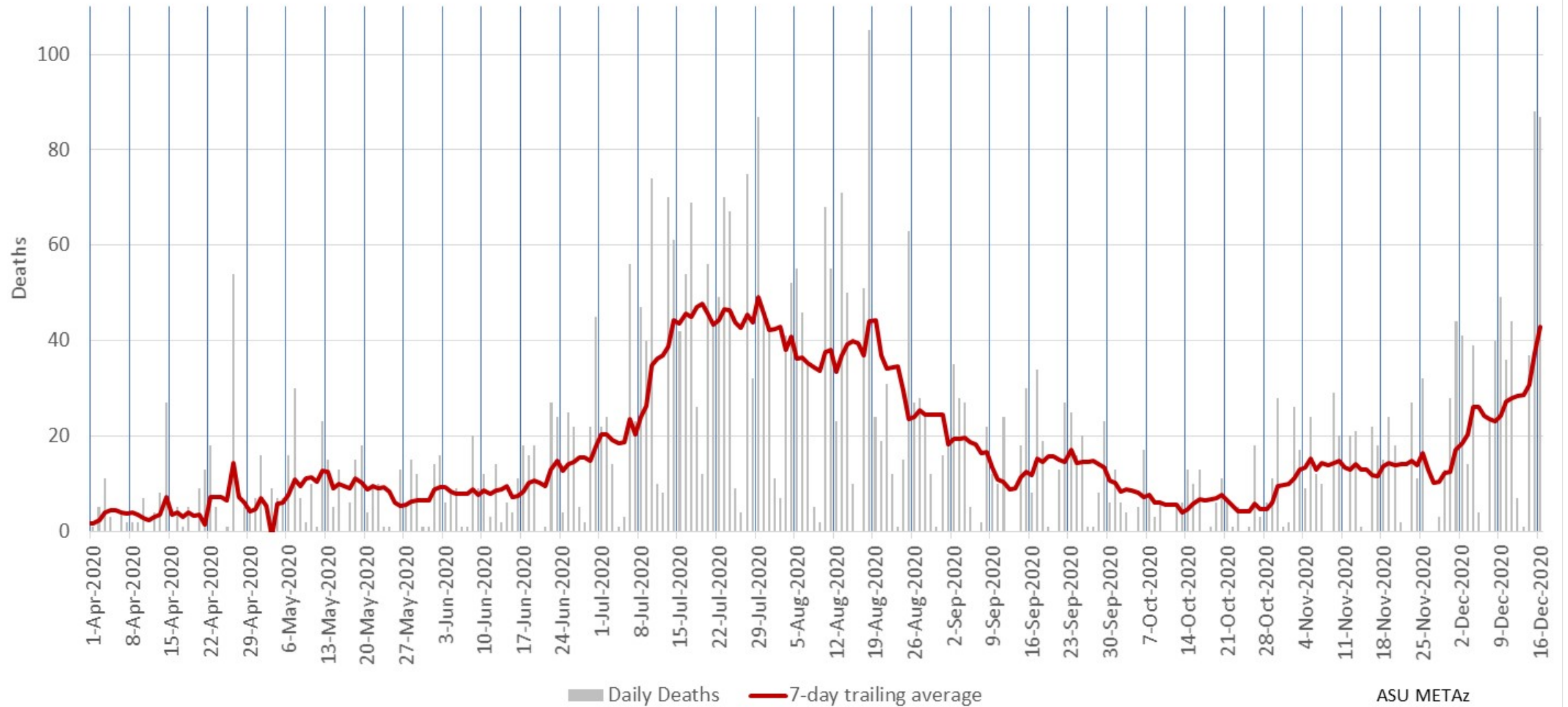


### Maricopa County Daily COVID-19 Positive Tests Results Reported (confirmed incidence)



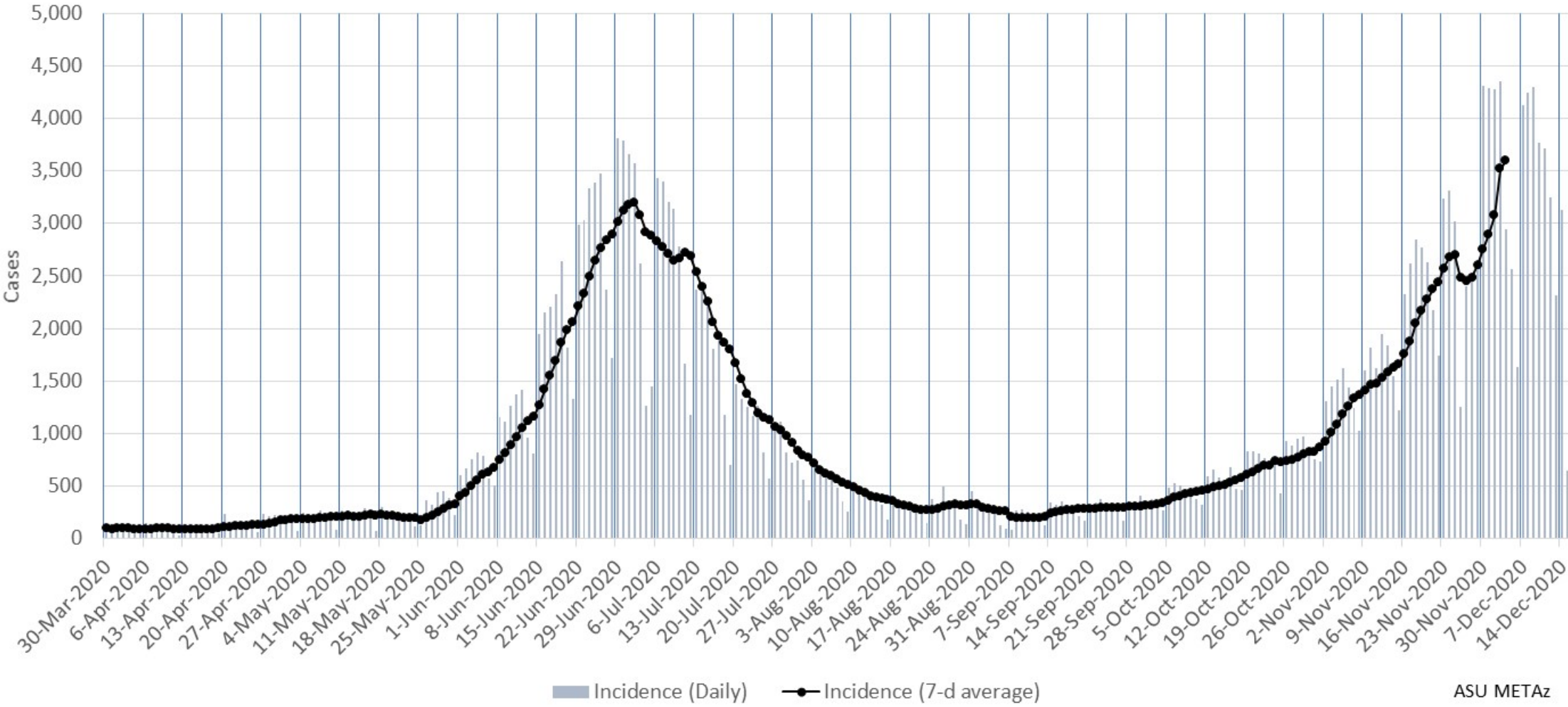
Due to the holiday, 2 days of data were held (Nov 26 & 27) and reported on Nov 28.

Maricopa County Daily COVID-19 Deaths (by date of reporting)



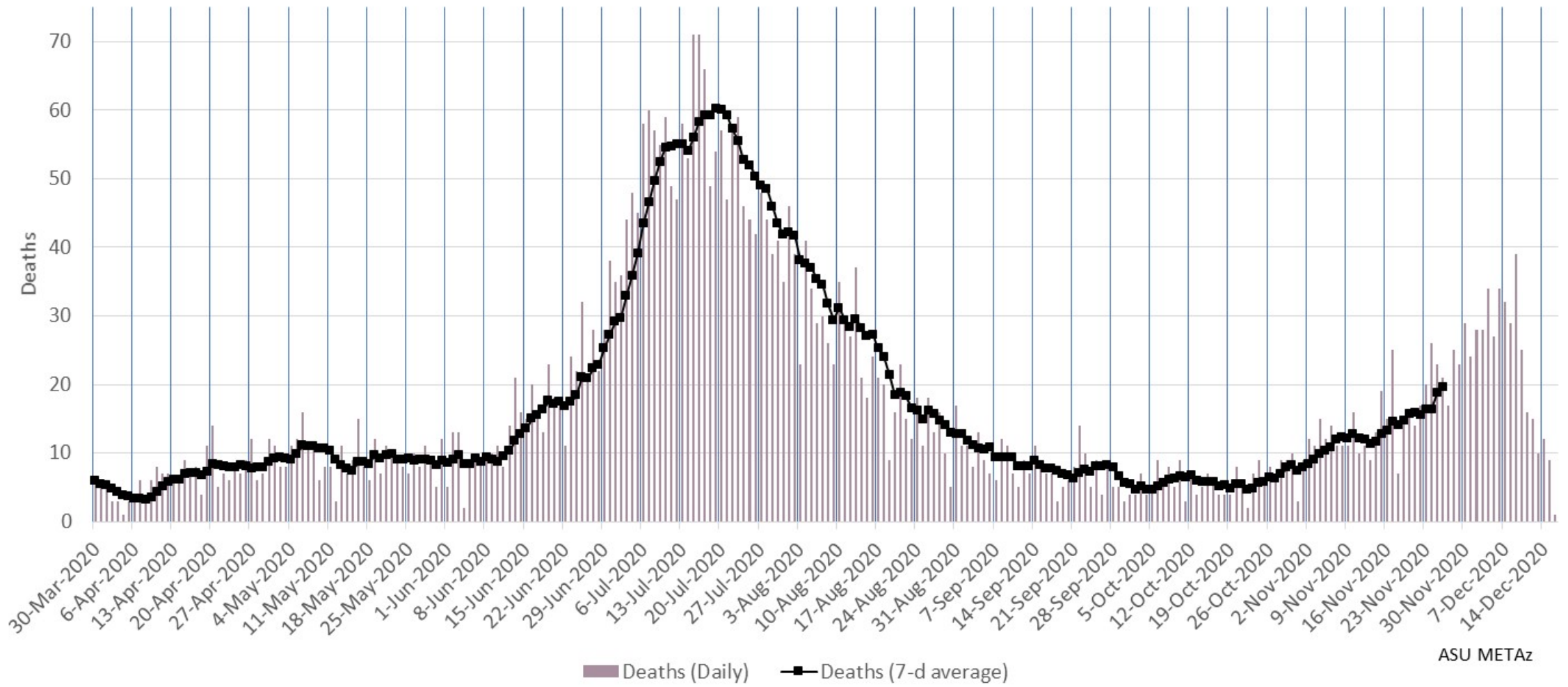
Due to the holiday, 2 days of data were held (Nov 26 & 27) and reported on Nov 28.

### Maricopa County Daily COVID-19 Cases by Date of Sample Collection (Epi Curve)



ASU METAz

### Maricopa County Daily COVID-19 Deaths by Date of Death (Epi Curve)



ASU METAz



# Arizona Statewide Analysis

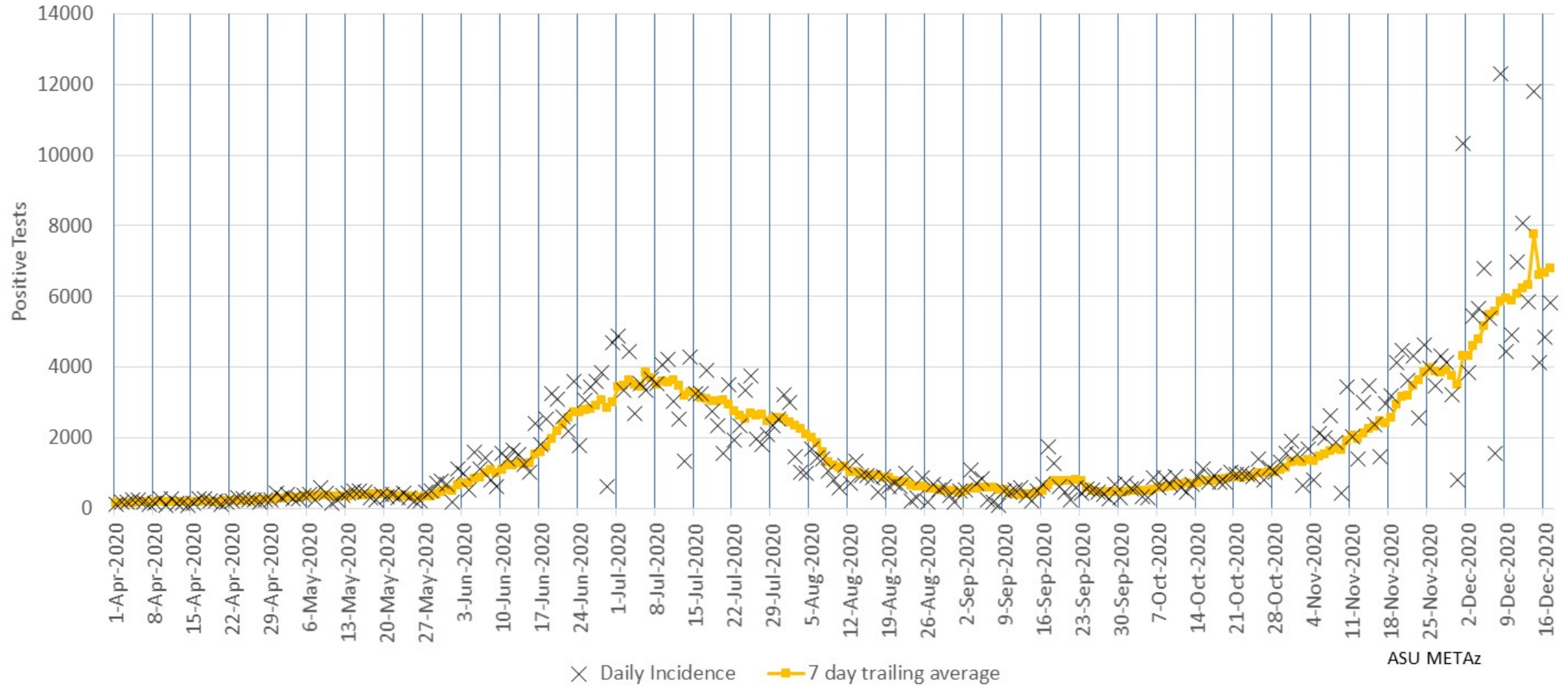




# Epidemiology

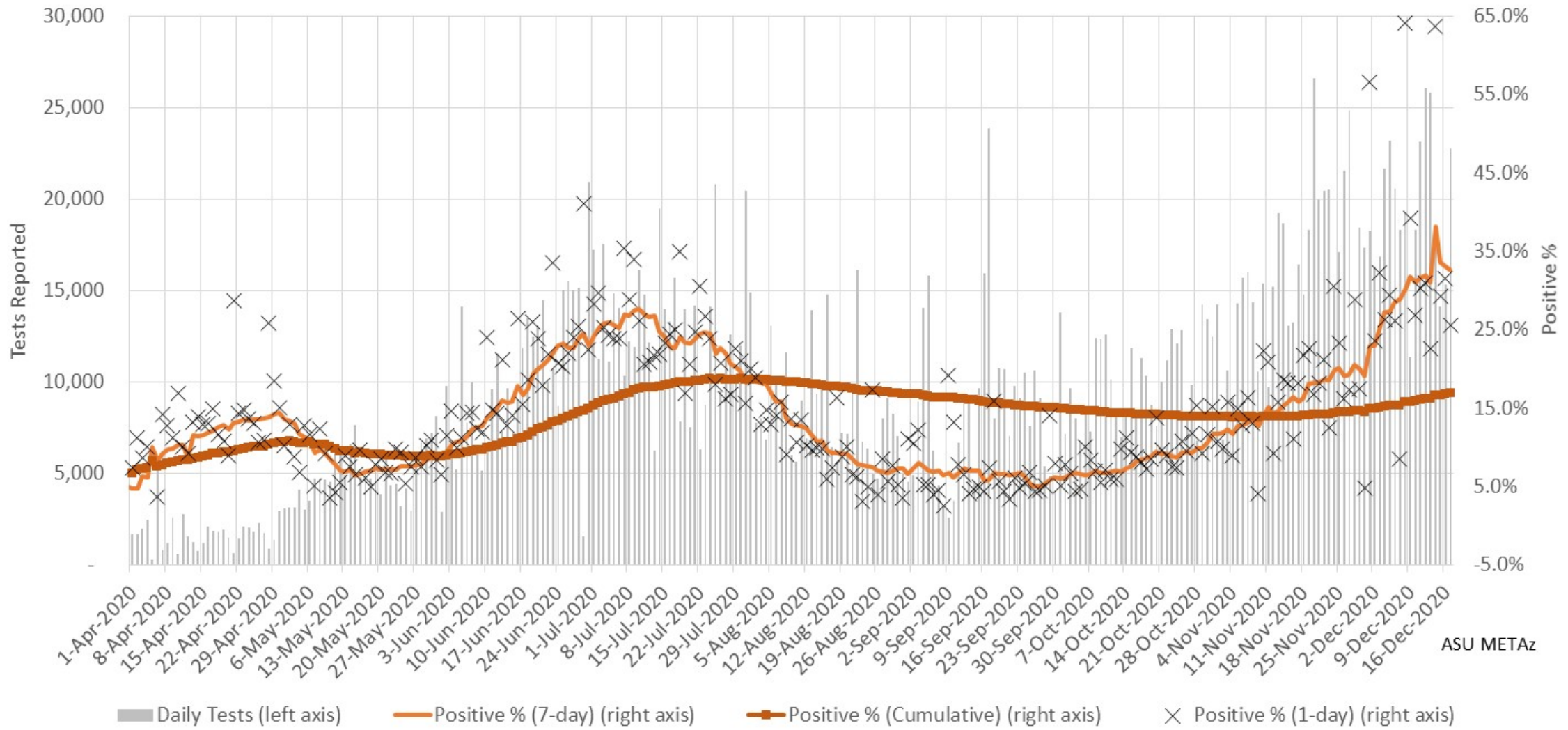


### Arizona Statewide Daily COVID-19 Positive Tests Results Reported (confirmed incidence)

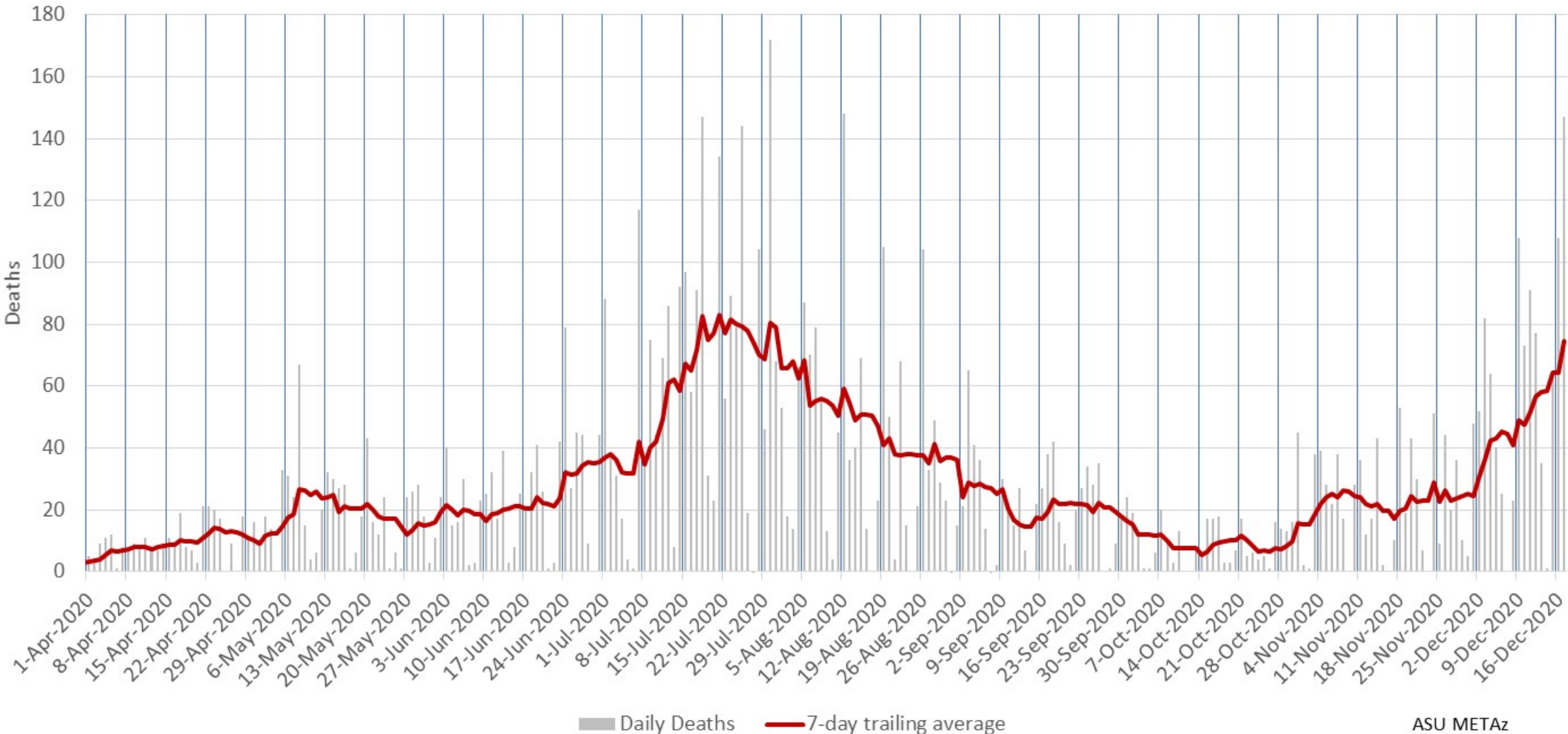


ASU METAz

### Arizona Statewide Rolling weekly positive COVID-19 test rate

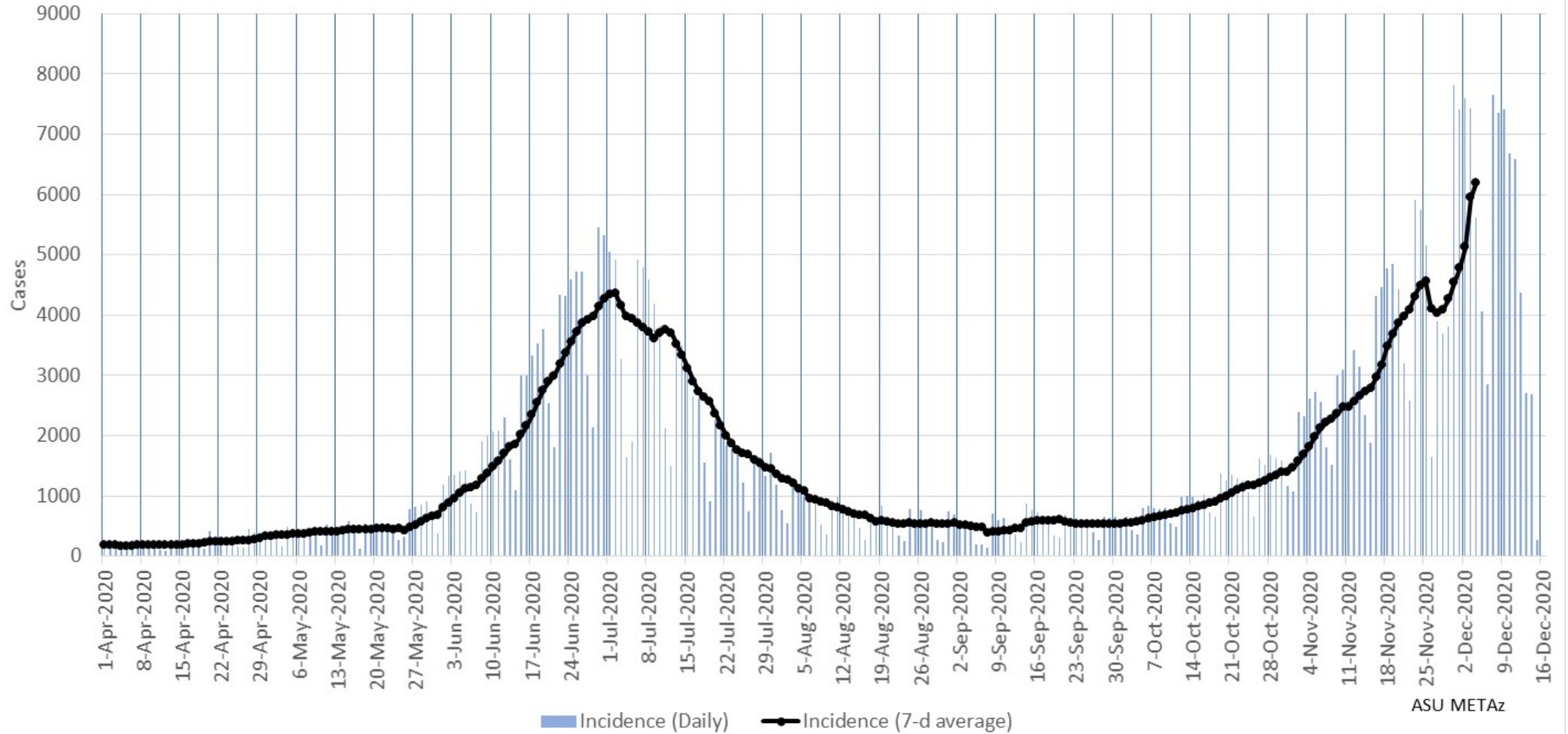


### Arizona Statewide Daily COVID-19 Deaths (by date of reporting)



ASU METAz

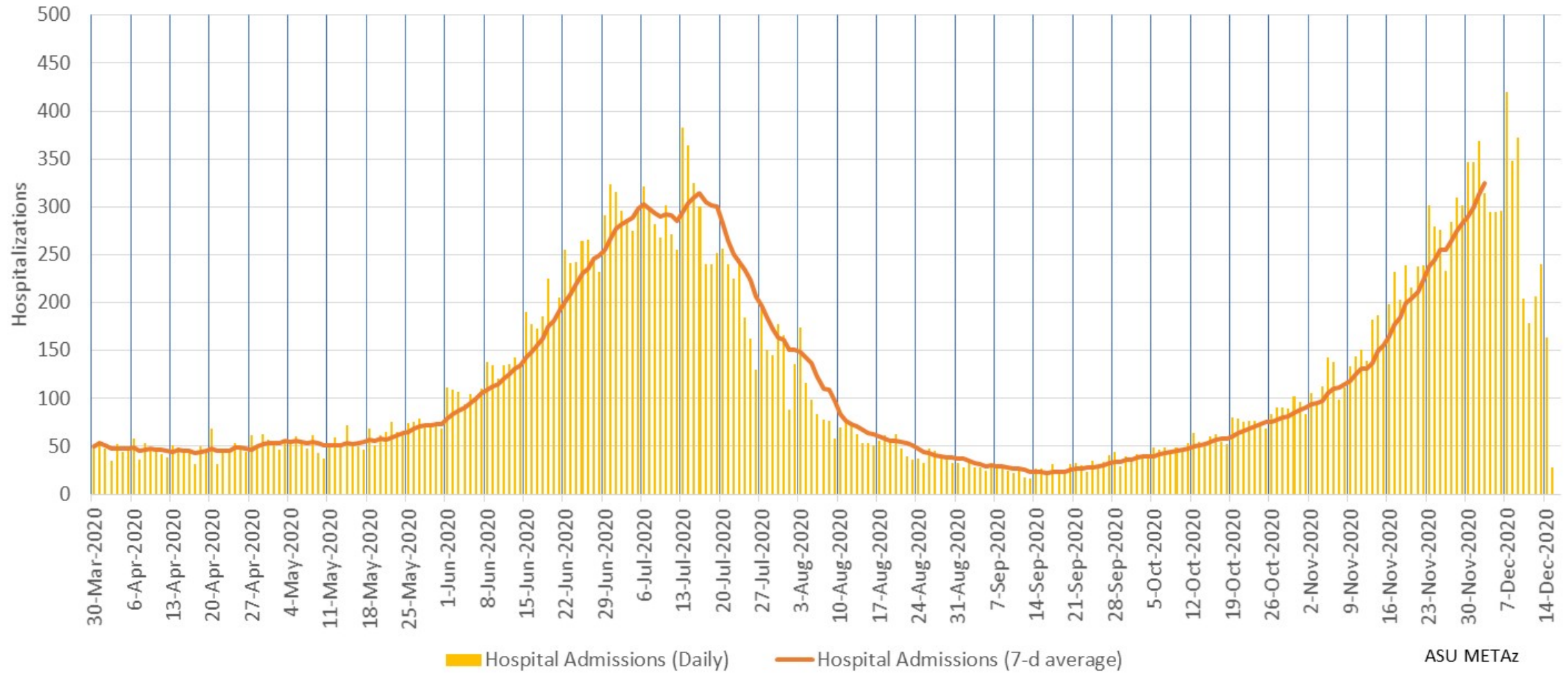
## Arizona Statewide Daily COVID-19 Cases by Date of Sample Collection (Epi Curve)



ASU METAz

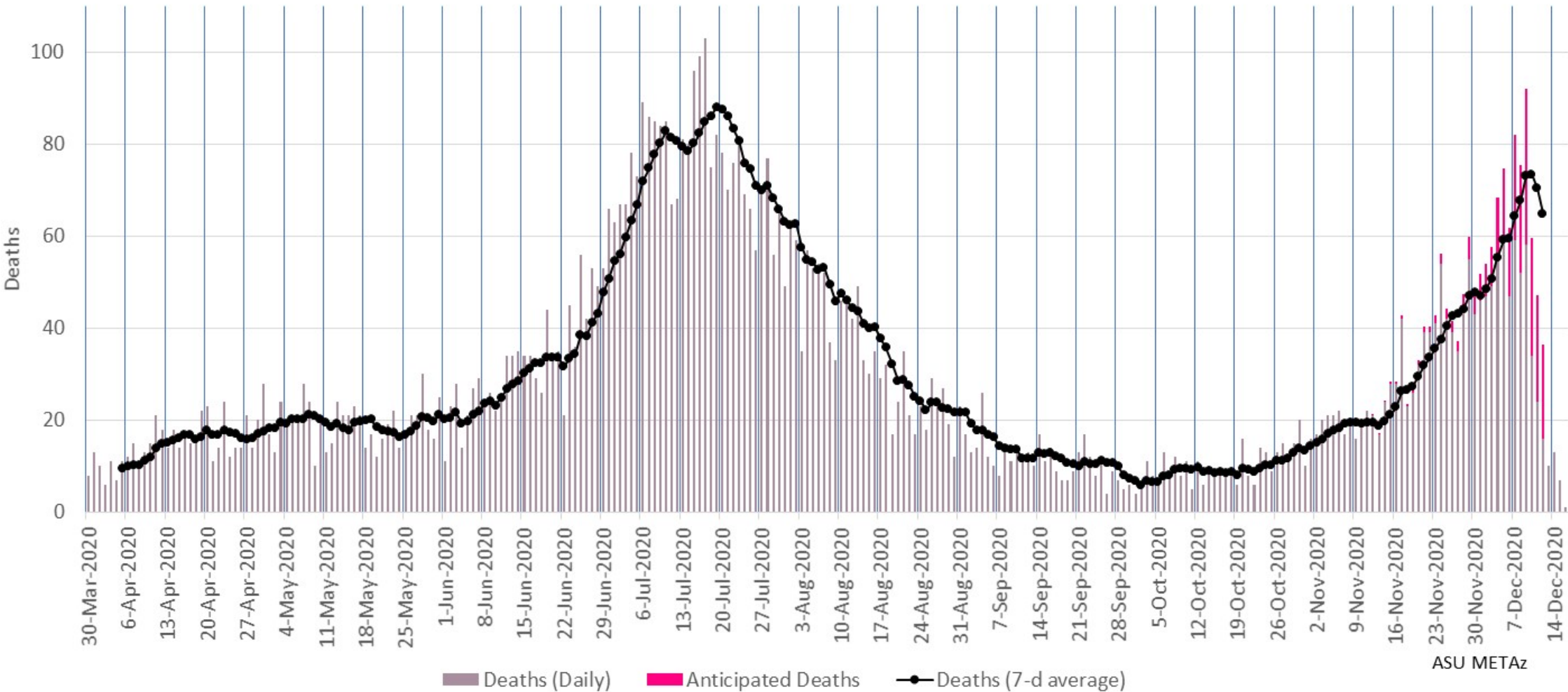


## Arizona Statewide Daily COVID-19 Hospitalizations by Date of Hospitalization (Epi Curve)



ASU METAz

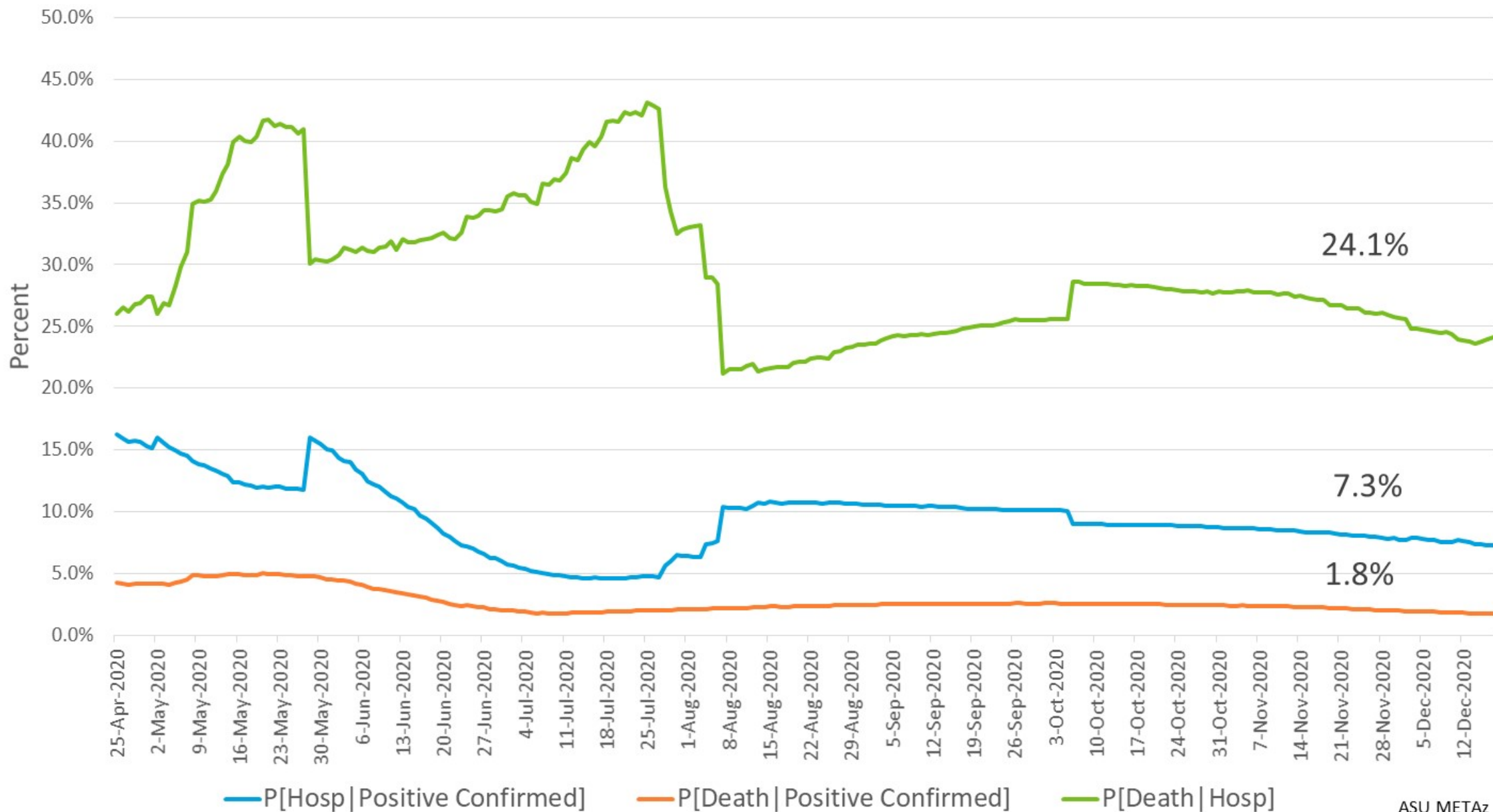
### Arizona Statewide Daily COVID-19 Deaths by Date of Death (Epi Curve)



ASU METAz



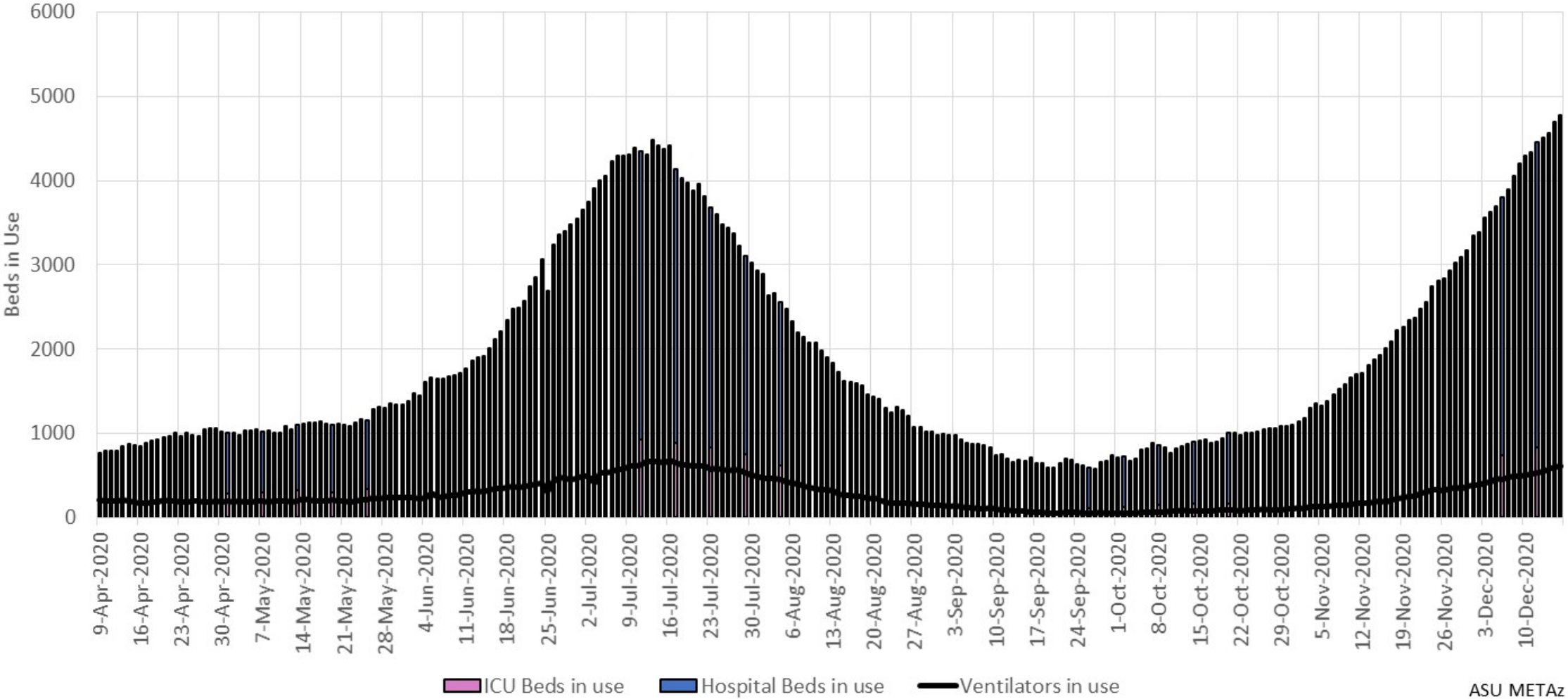
# Arizona Statewide Case Fatality and Hospitalization Rates



# Hospital Usage

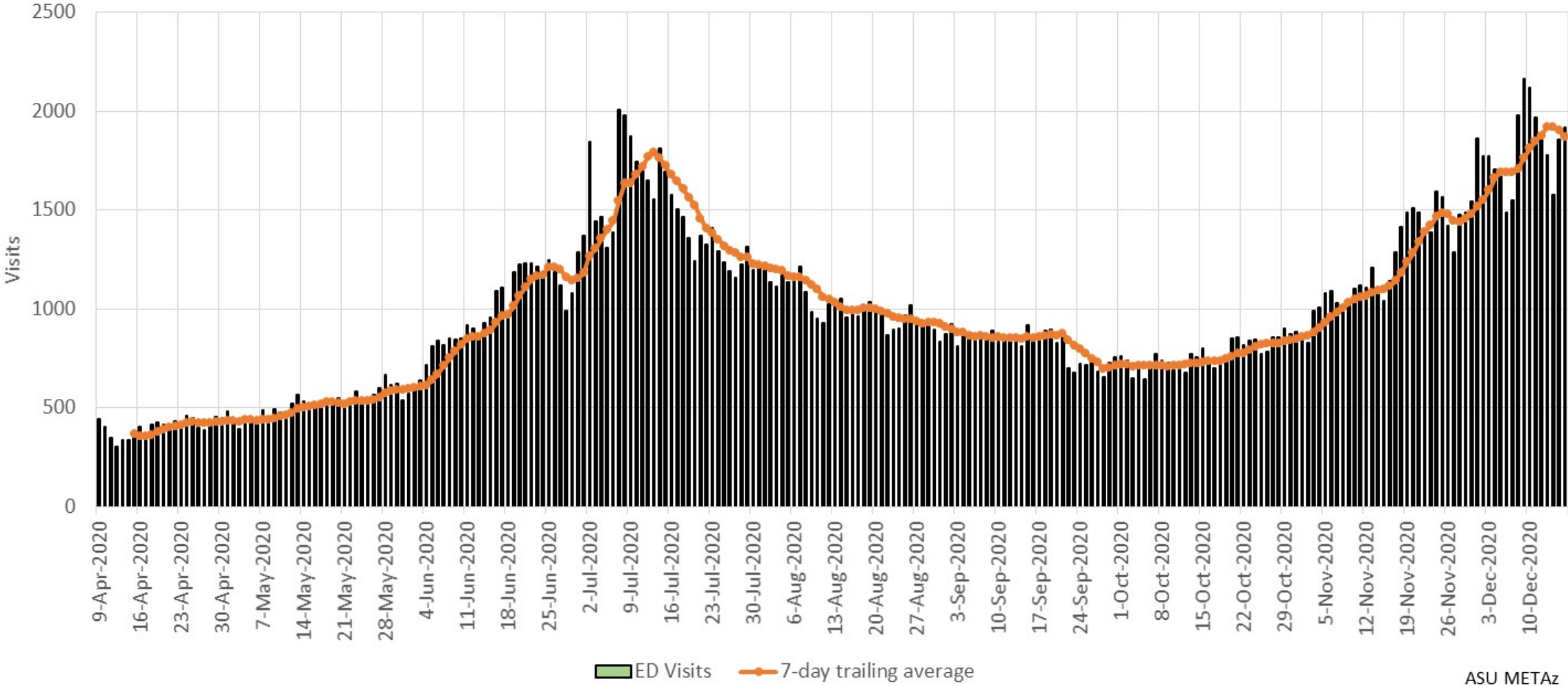


# Arizona Statewide COVID-19 Hospital Resource Utilization



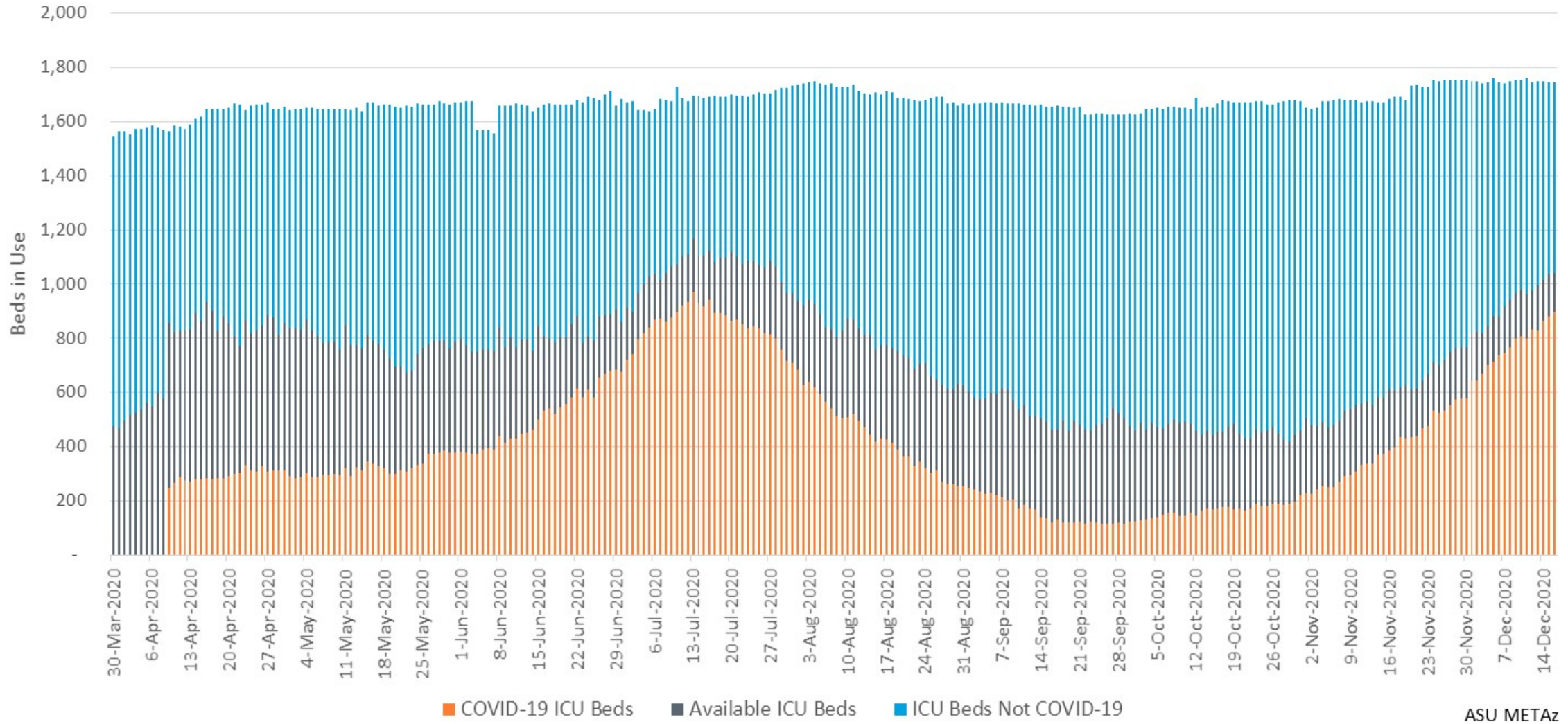
ASU METAz

### Arizona Statewide COVID-19 Emergency Department Visits



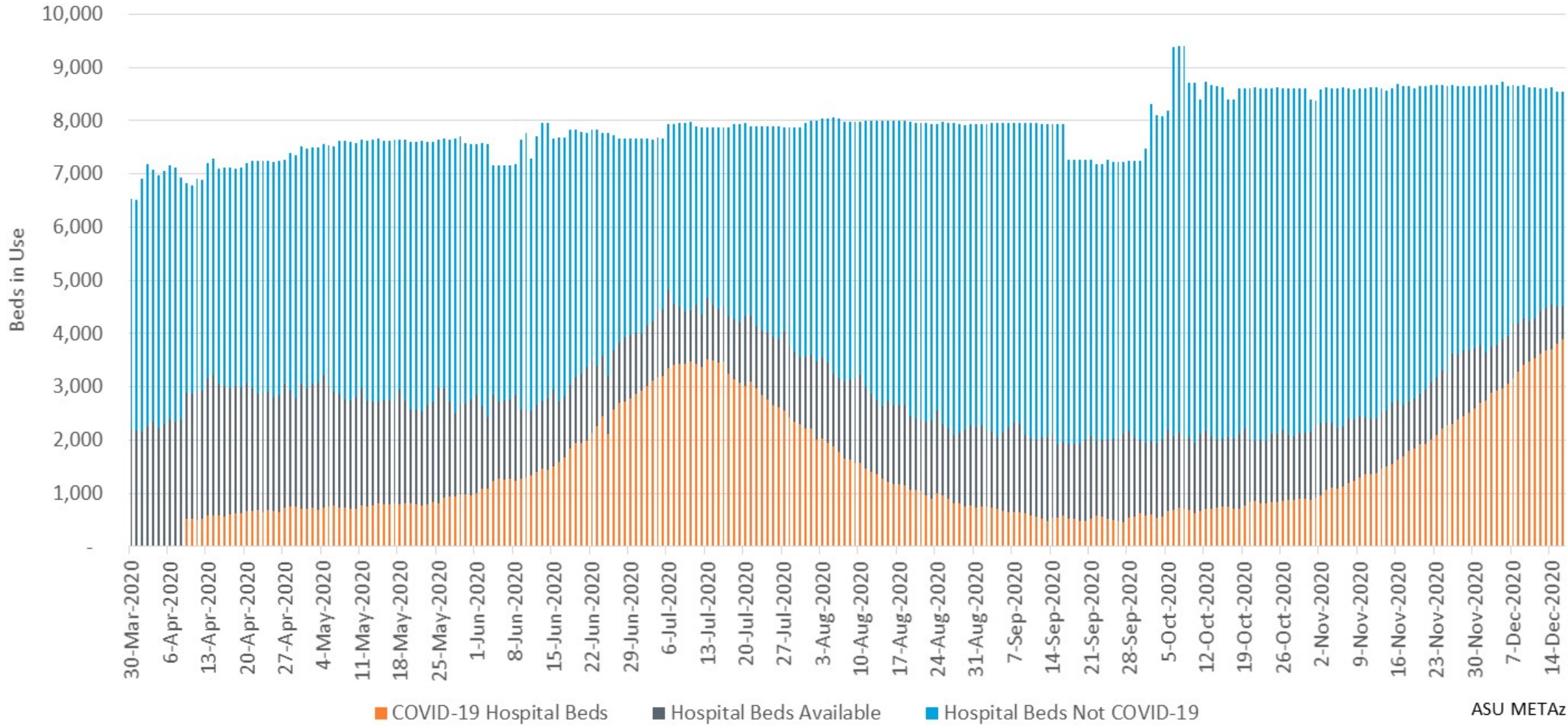
ASU METAz

### Arizona Statewide ICU Bed Usage



ASU METAz

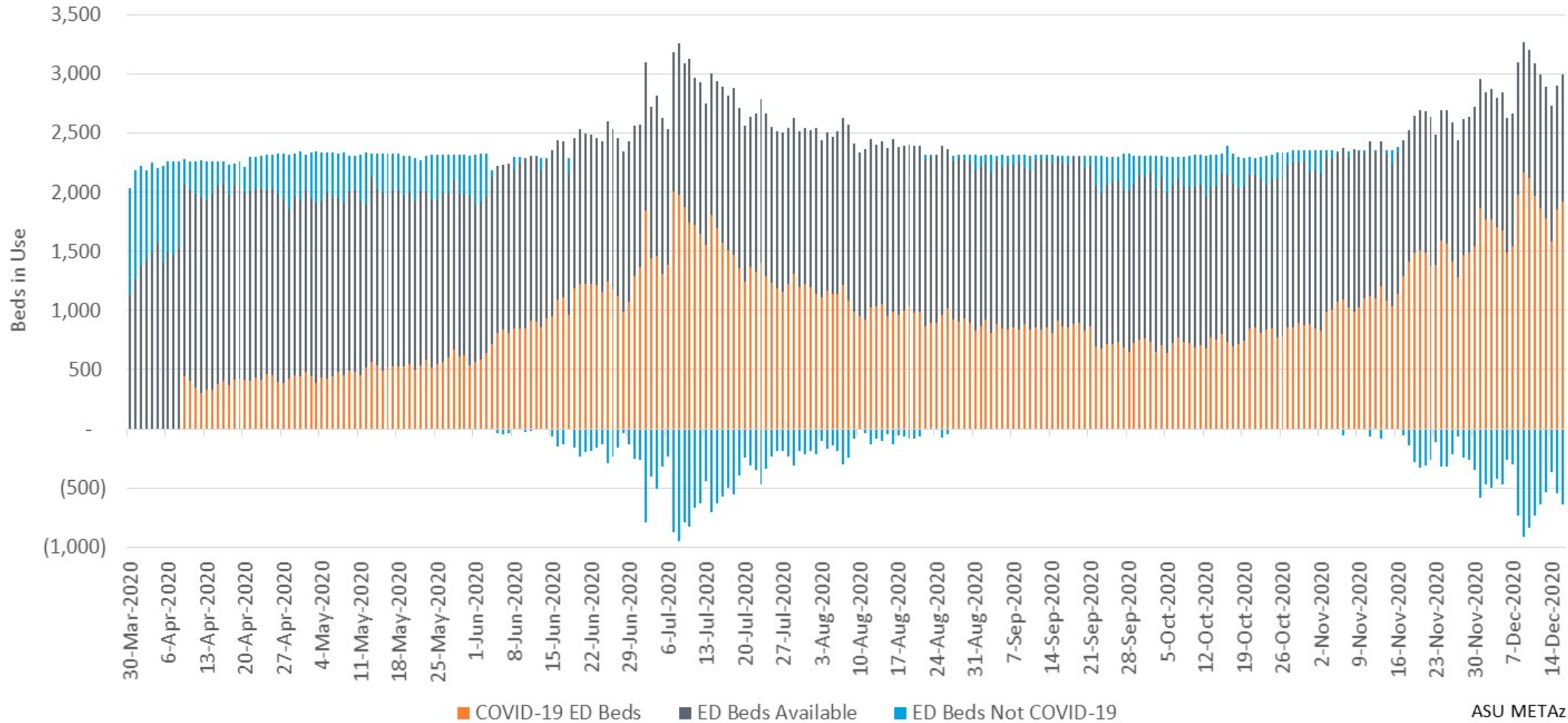
### Arizona Statewide Inpatient Bed Usage



ASU METAz



### Arizona Statewide ED Bed Usage



Where blue bars are below zero, COVID ED patients exceeded total reported ED bed usage