



# COVID Epidemiology Situation Update

Tim Lant, PhD, MAS, Heather Ross PhD, DNP, ANP-BC, Anna Muldoon, MPH, Samantha Sokol, Esma Gel, PhD, and Megan Jehn, PhD

**December 14, 2020**

# Summary

December 14, 2020				
	Statewide		Maricopa	
	Reported Today	Cumulative	Reported Today	Cumulative
<b>Cases</b>	11,806	420,248	6,975	260,661
<b>PCR Tests</b>	18,526	2,531,222	10,203	1,498,209
<b>% Positive</b>	63.7%	16.6%	68.4%	12.3%
<b>Hospitalizations</b>	193	31,142	178	19,177
<b>Deaths</b>	1	7,358	0	4,353

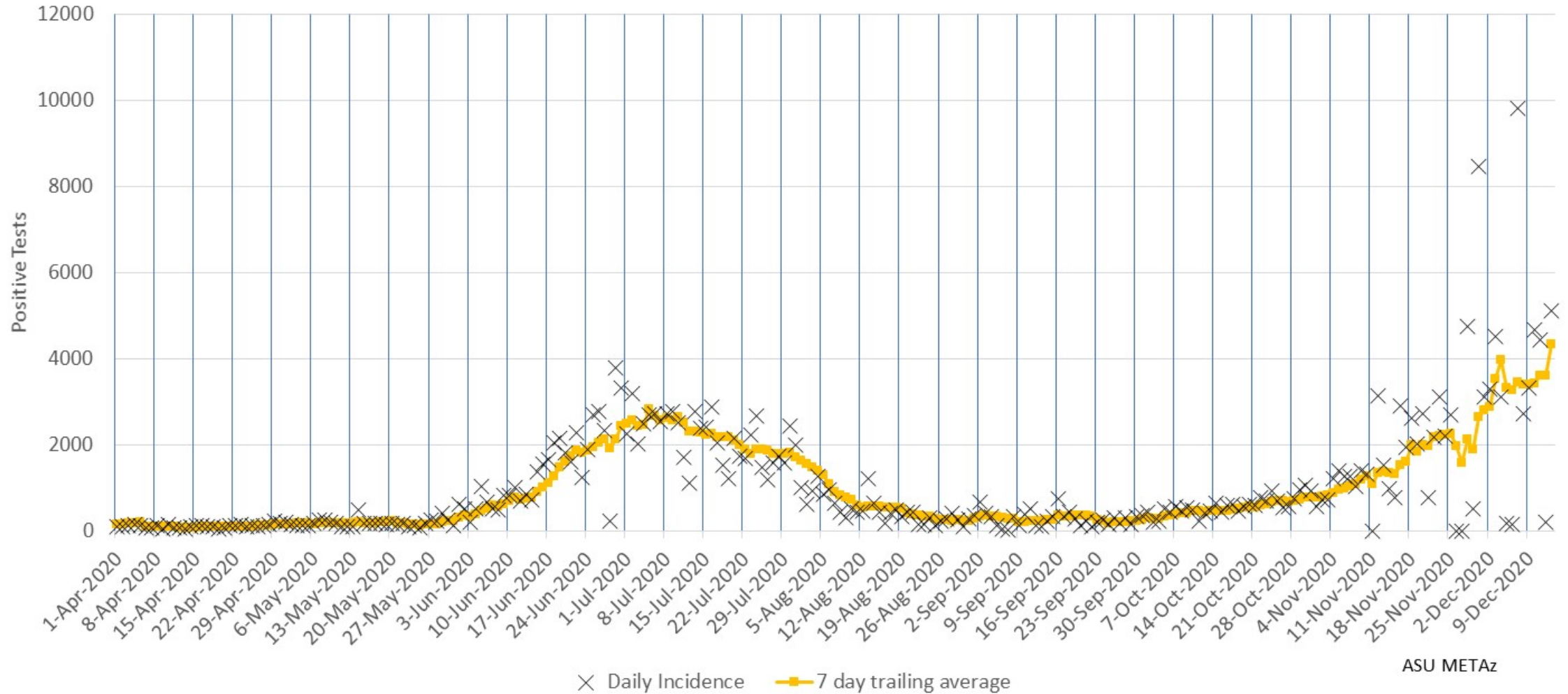
*All data pulled from azdhs.gov. Numbers may not match Maricopa county data.*

- Today's statewide case count is 11,806 with 6,975 cases (59%) in Maricopa County, roughly equivalent to population distribution. The 7-day average for reported cases continues to increase and is now 7,772.
- The epi curve continues to increase in Maricopa County and statewide with continued exponential growth exceeding the previous wave in Arizona. Peak cases by incident date are 8,013 on 12/7.
- Due to significant irregularities in ADHS data reporting patterns that reduce the reliability of day-to-day positivity data, 7-day average positivity is more reliable; it has been above 30% for nearly a week and is now above 35% for the first time ever, indicating sustained and uncontrolled spread statewide.
- Hospital utilization continues to increase with remaining bed capacity lower than at any time since the start of the pandemic. Bed usage for COVID-19 is at 43% of inpatient beds (highest number of beds at any point during the pandemic) and 47% of ICU beds statewide (a drop of 10 ICU beds from the prior day). Current hospital utilization is 91% for inpatient beds and 91% for ICU beds including COVID and non-COVID utilization. ED visits for COVID remain at high levels similar to the peak of the first wave in June/July. Hospitals are experiencing shortages in bed space and staff.

# Maricopa County Analysis

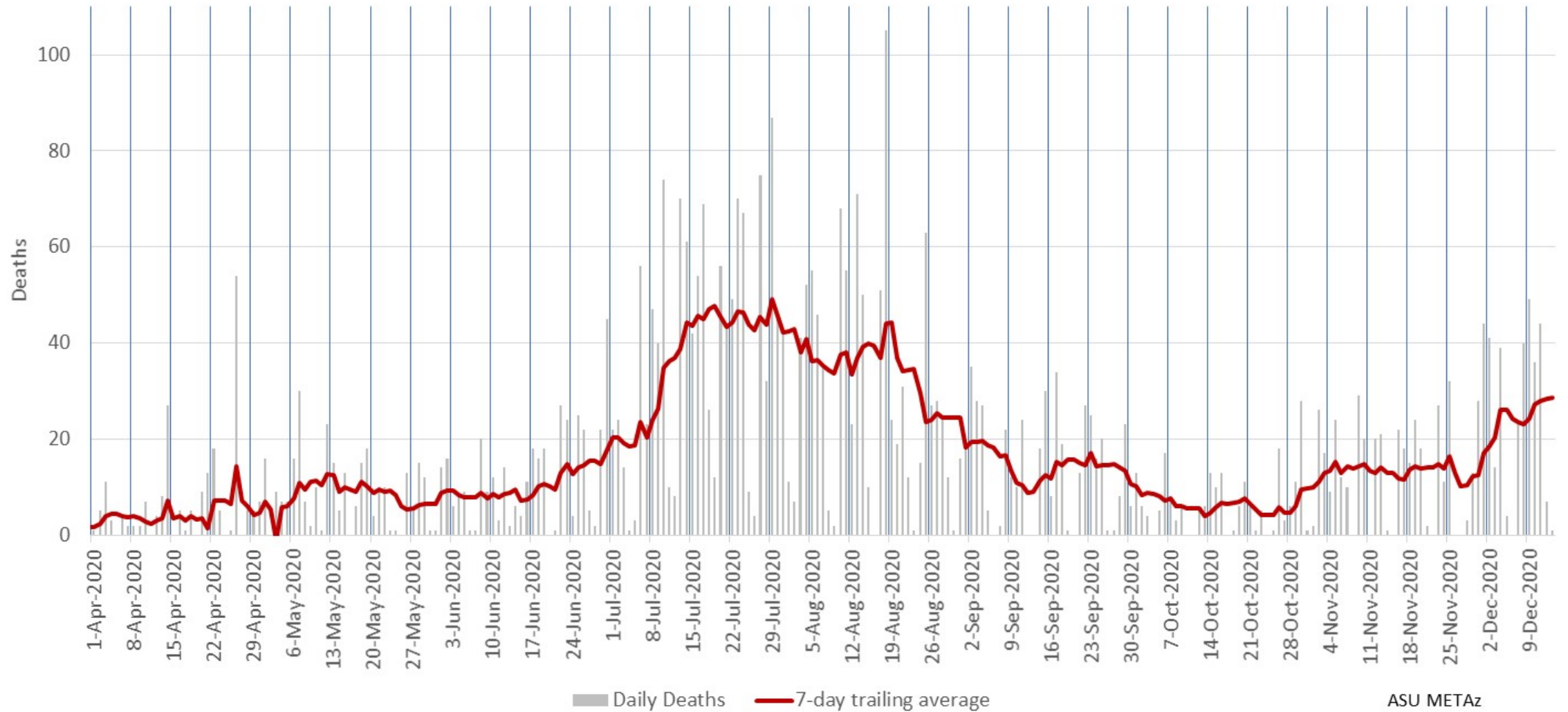


### Maricopa County Daily COVID-19 Positive Tests Results Reported (confirmed incidence)



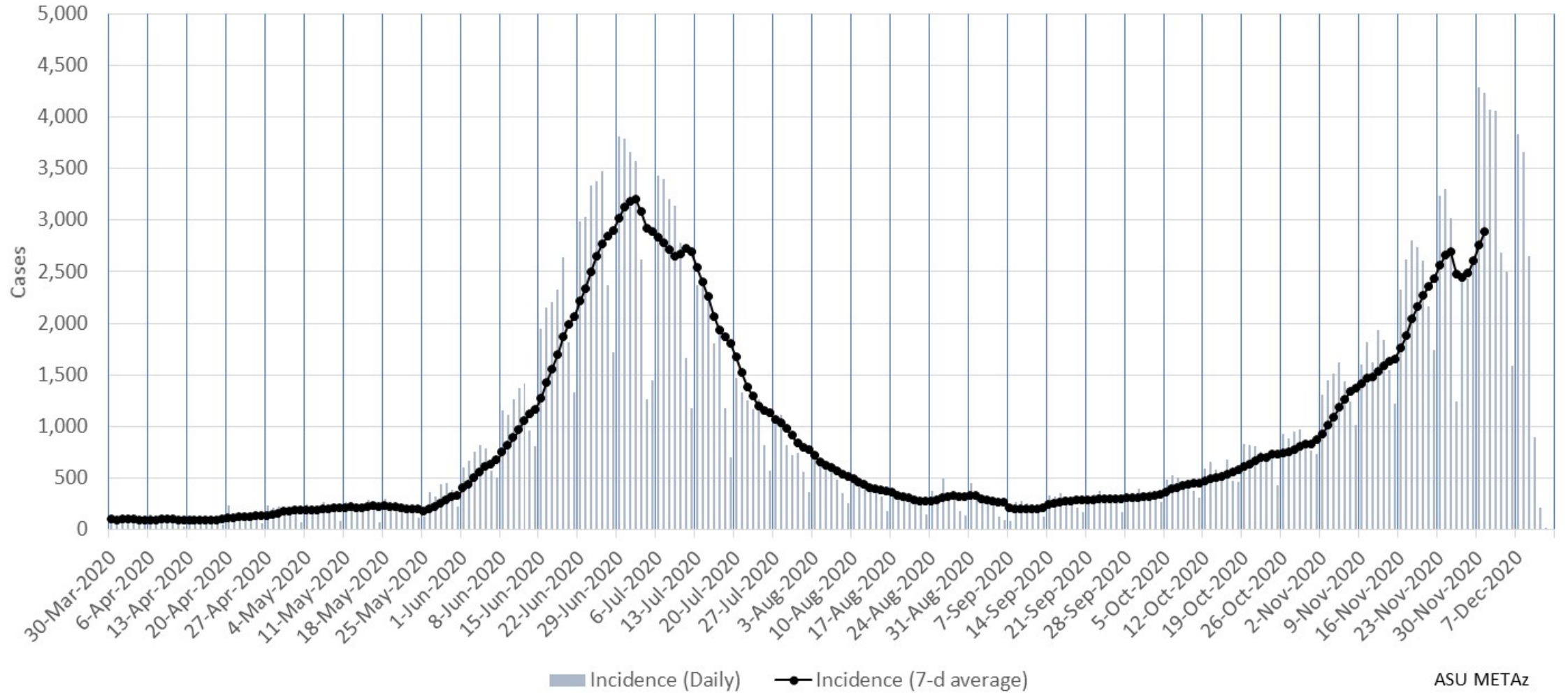
Due to the holiday, 2 days of data were held (Nov 26 & 27) and reported on Nov 28.

Maricopa County Daily COVID-19 Deaths (by date of reporting)



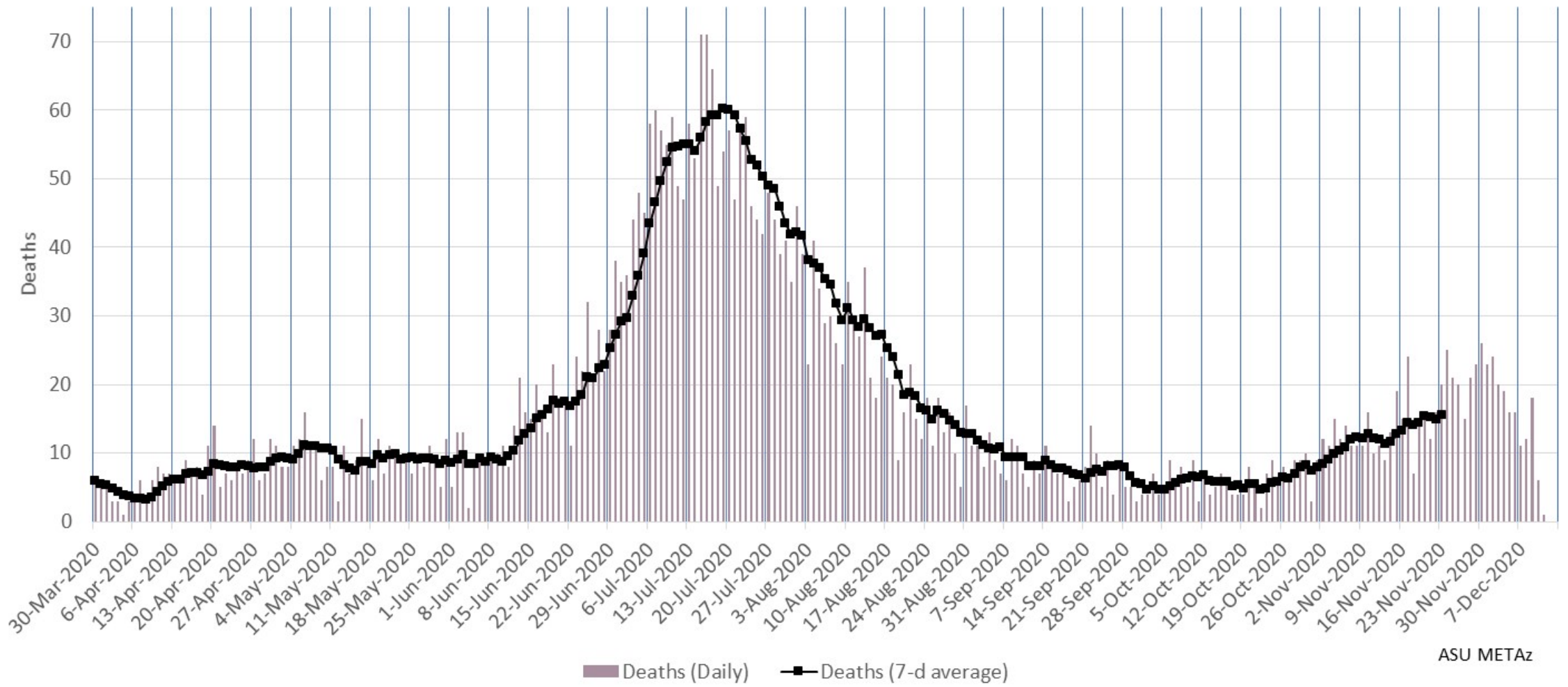
Due to the holiday, 2 days of data were held (Nov 26 & 27) and reported on Nov 28.

Maricopa County Daily COVID-19 Cases by Date of Sample Collection  
(Epi Curve)



ASU METAz

### Maricopa County Daily COVID-19 Deaths by Date of Death (Epi Curve)



ASU METAz

# Arizona Statewide Analysis

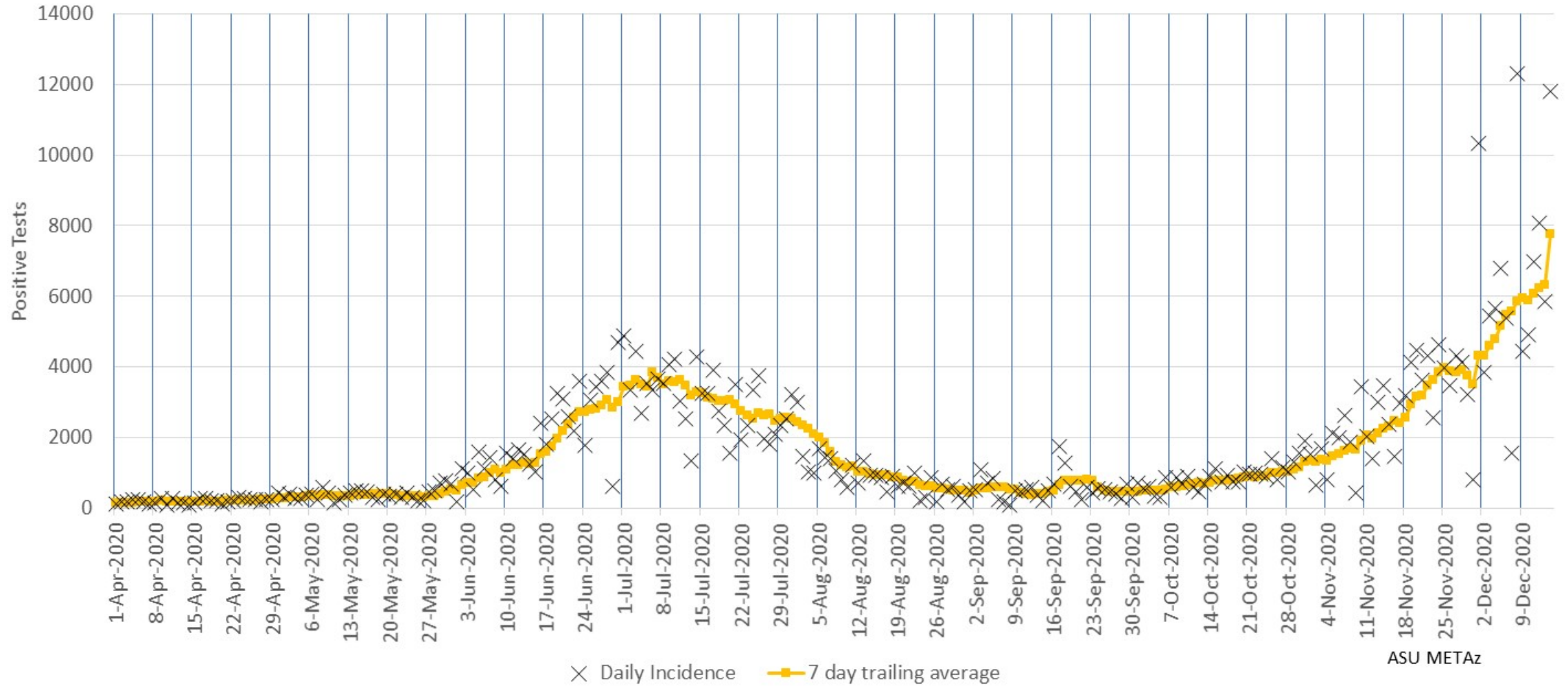




# Epidemiology

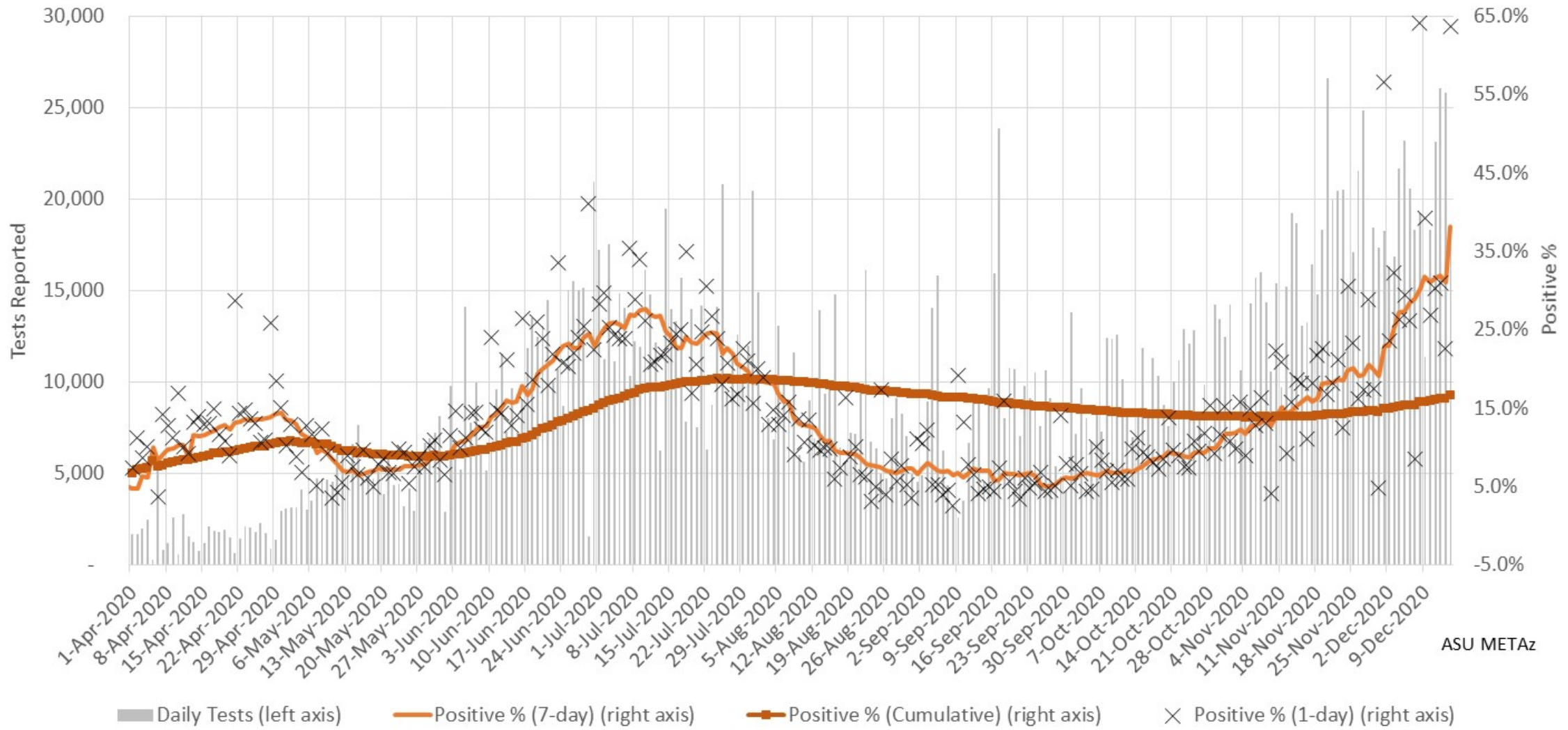


### Arizona Statewide Daily COVID-19 Positive Tests Results Reported (confirmed incidence)



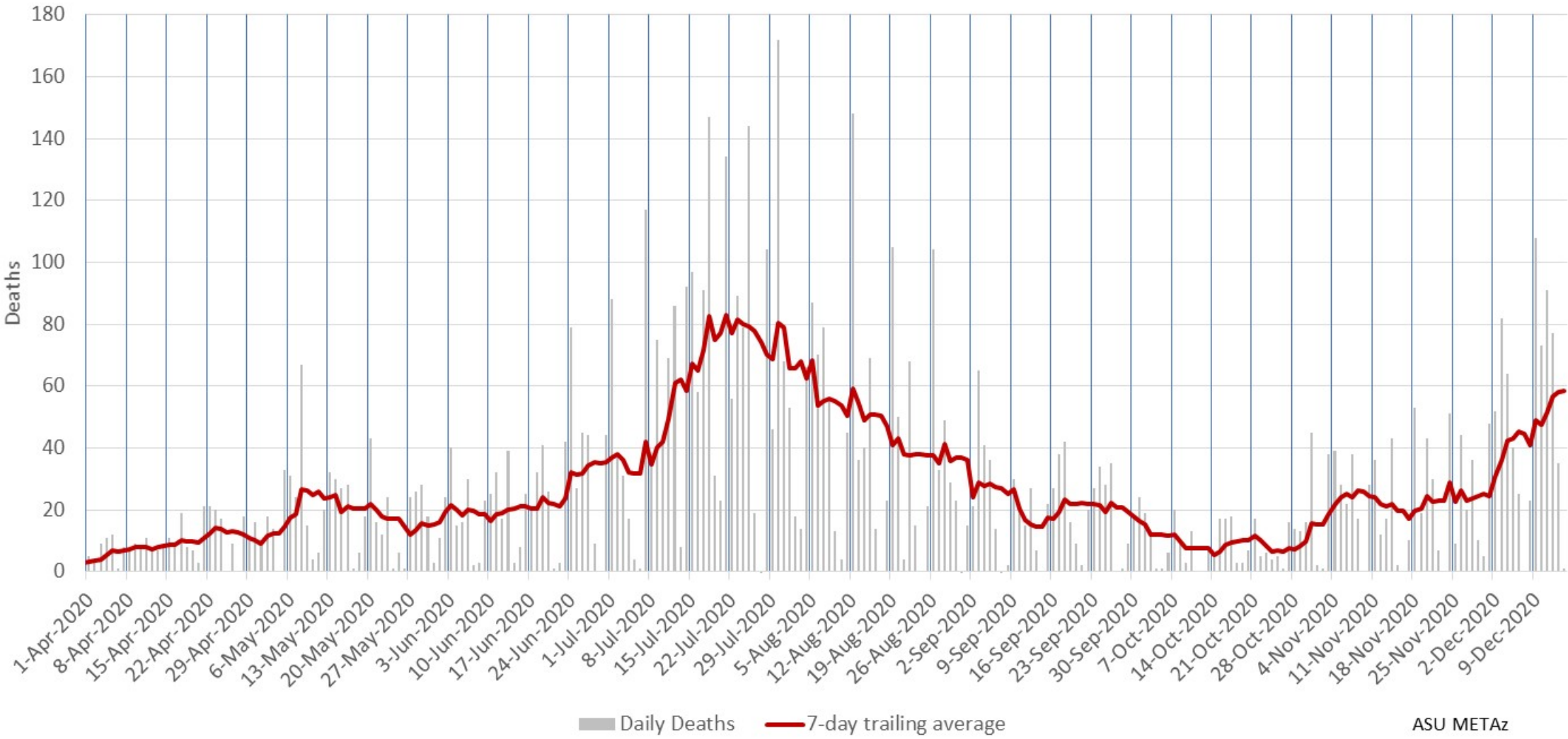
ASU METAz

### Arizona Statewide Rolling weekly positive COVID-19 test rate



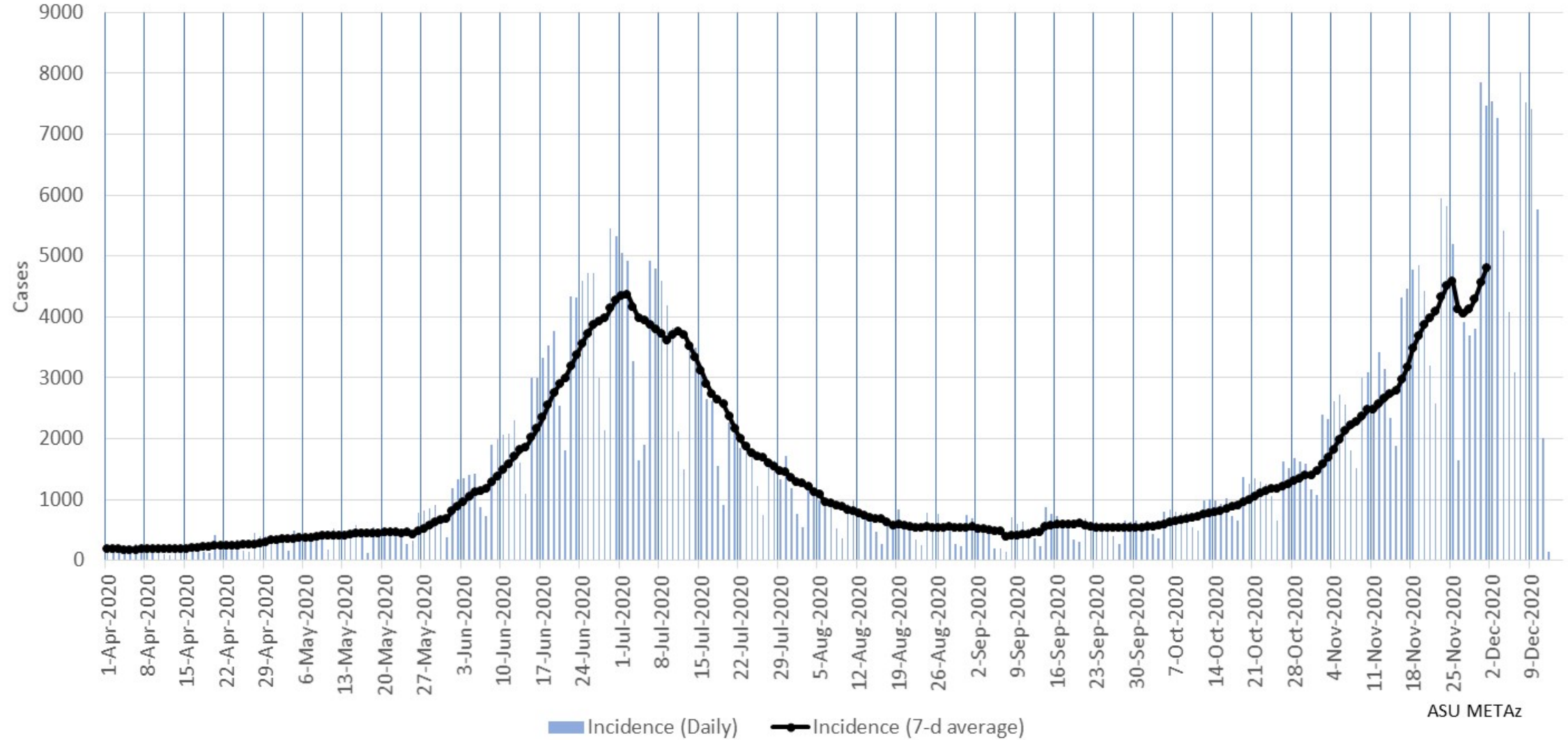
ASU METAz

Arizona Statewide Daily COVID-19 Deaths (by date of reporting)



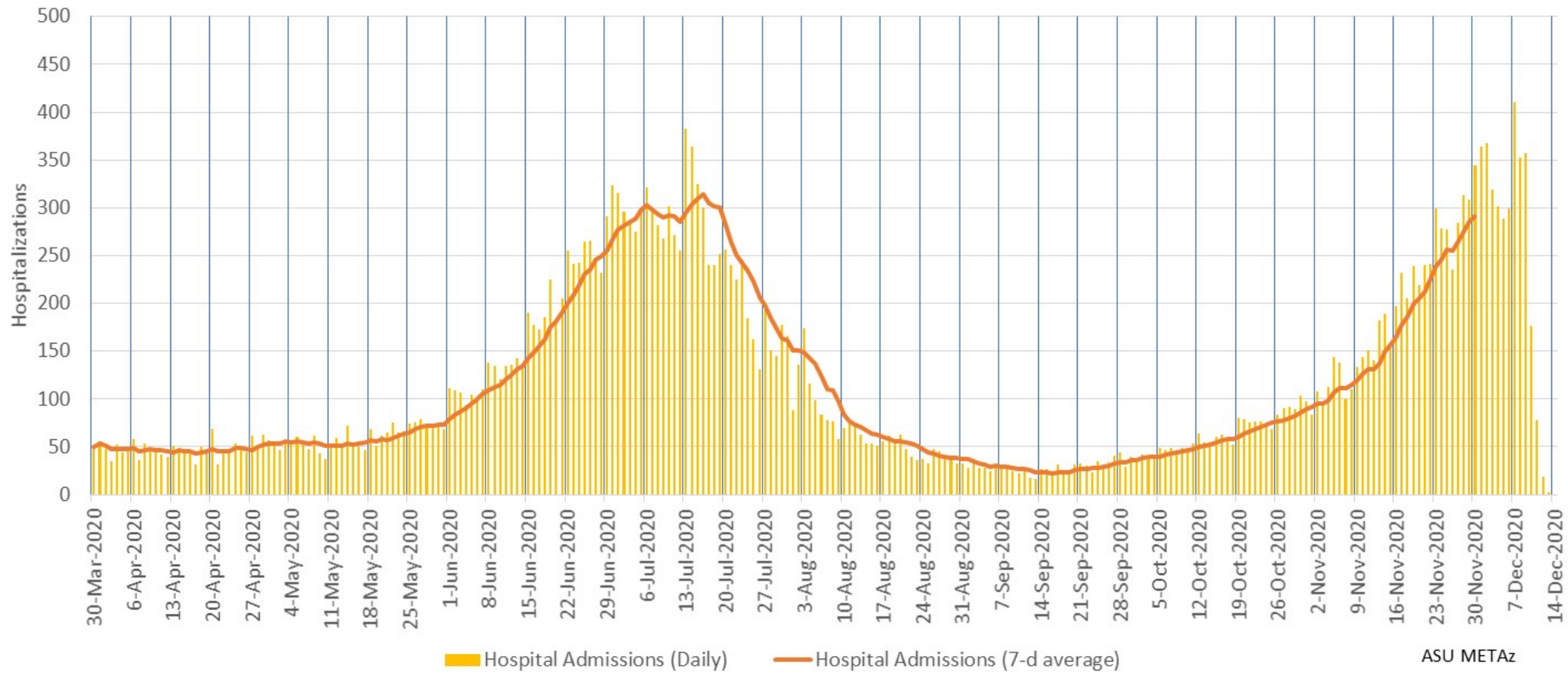
ASU METAz

# Arizona Statewide Daily COVID-19 Cases by Date of Sample Collection (Epi Curve)



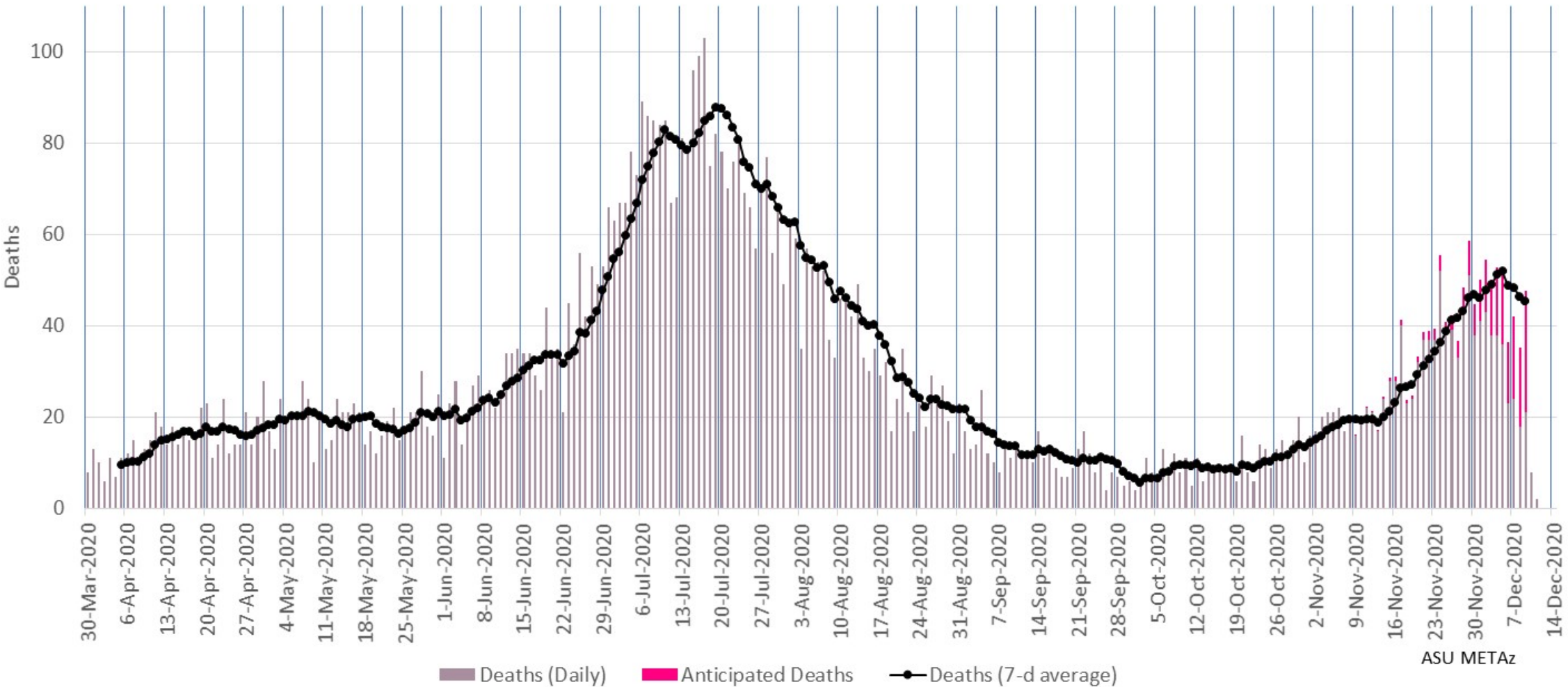
ASU METAz

### Arizona Statewide Daily COVID-19 Hospitalizations by Date of Hospitalization (Epi Curve)



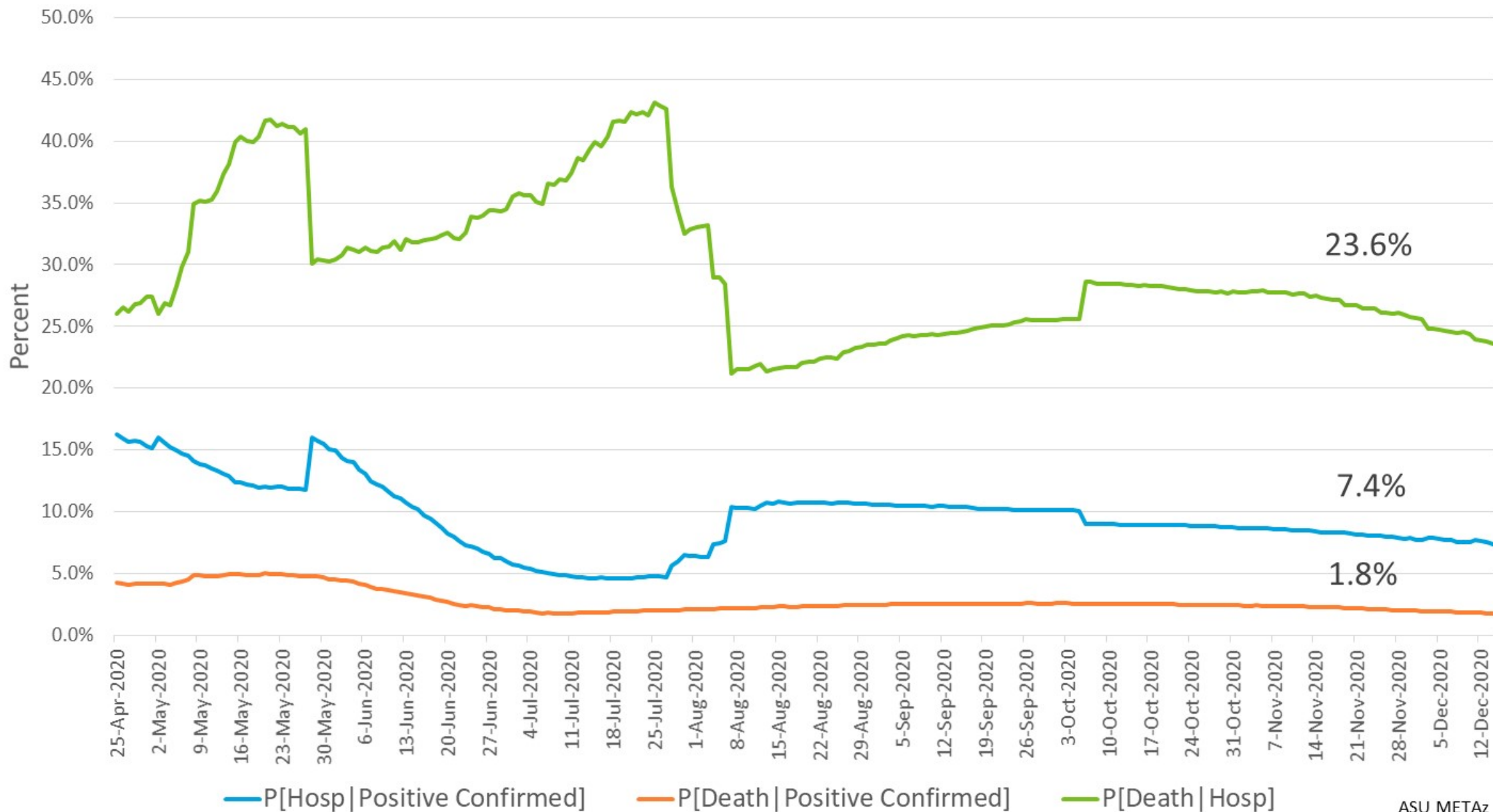
ASU METAz

### Arizona Statewide Daily COVID-19 Deaths by Date of Death (Epi Curve)



ASU METAz

# Arizona Statewide Case Fatality and Hospitalization Rates

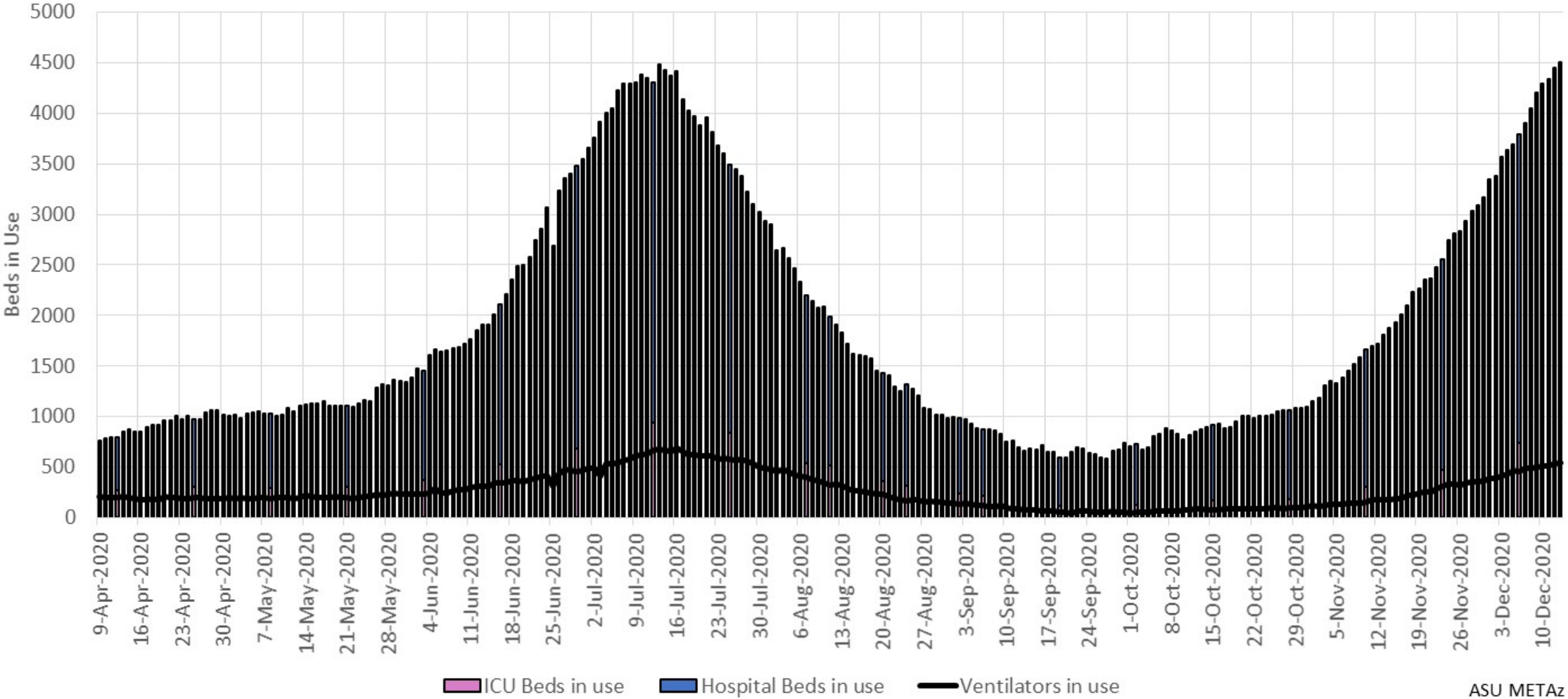




# Hospital Usage

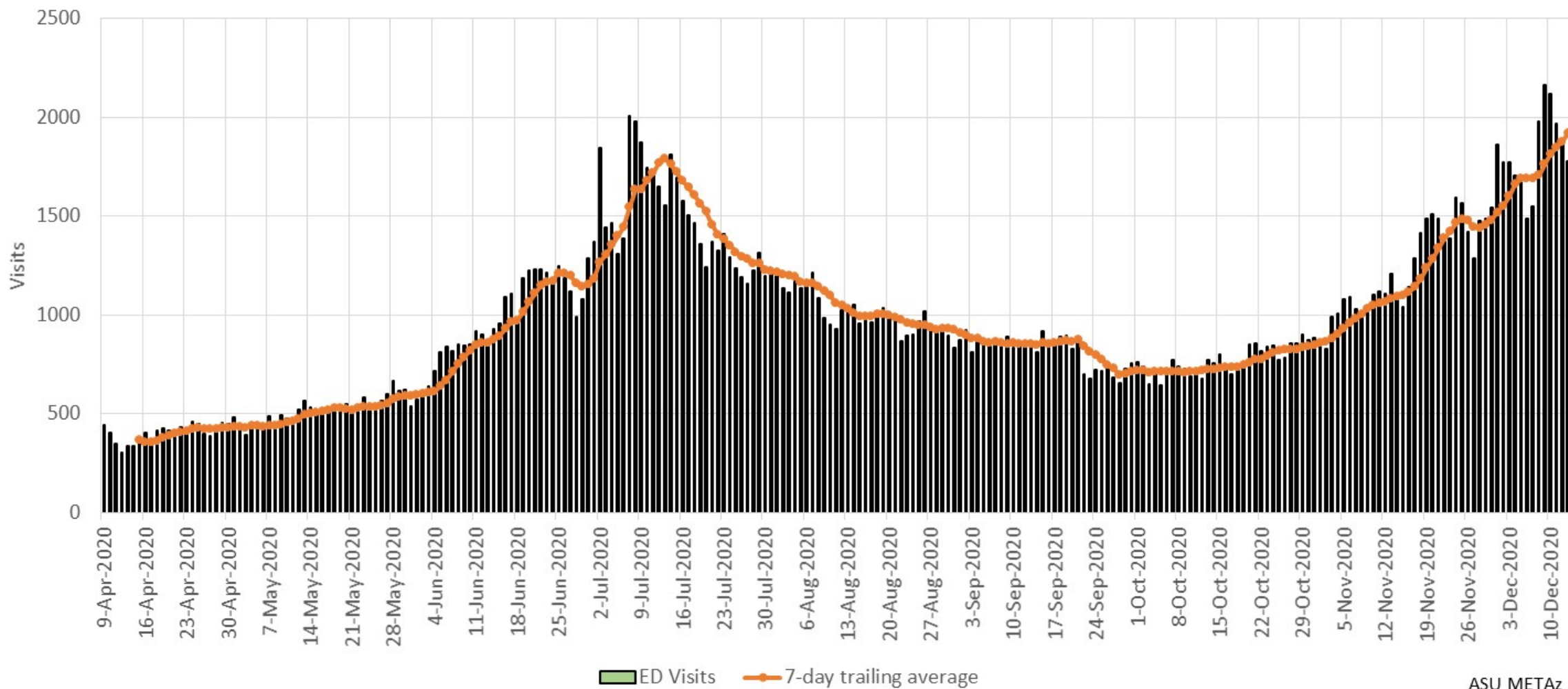


# Arizona Statewide COVID-19 Hospital Resource Utilization



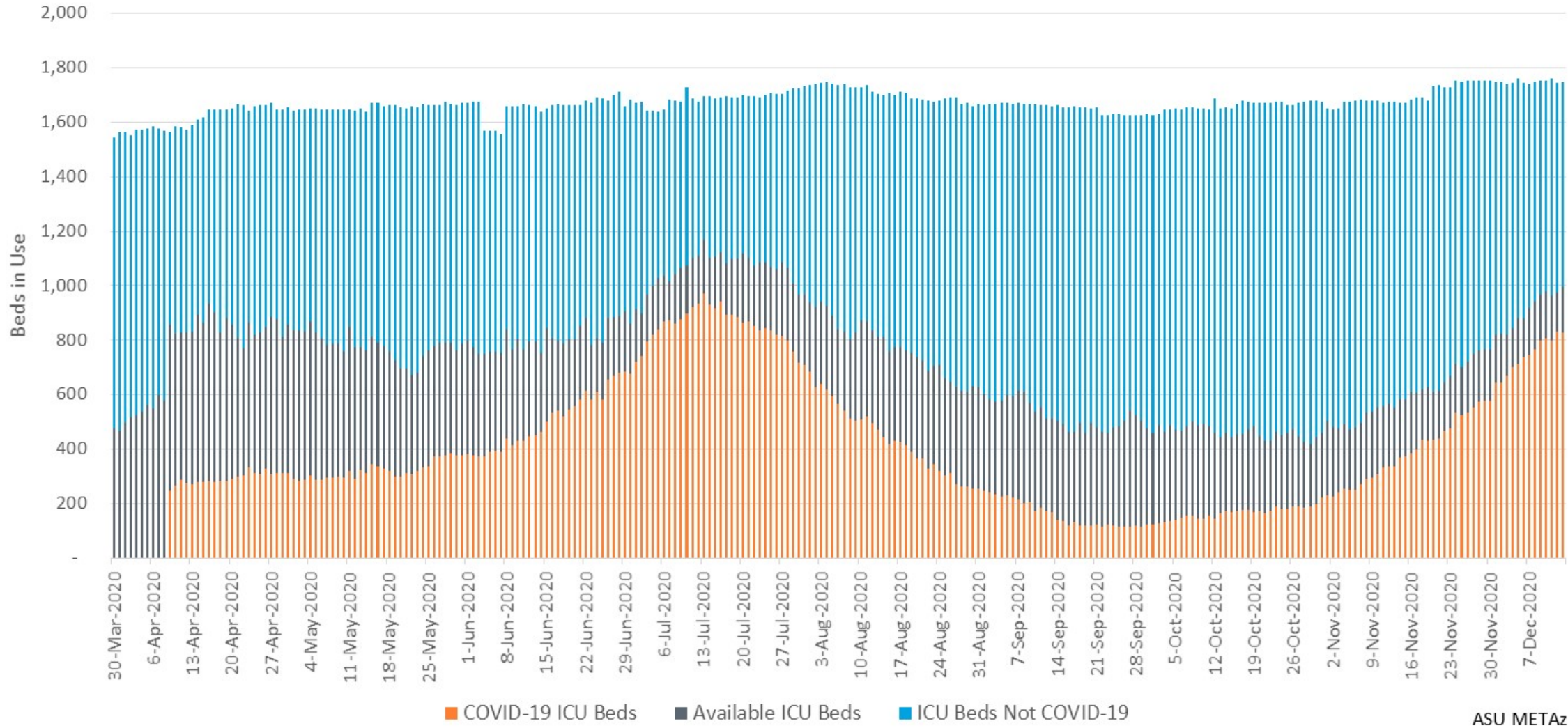
ASU METaz

### Arizona Statewide COVID-19 Emergency Department Visits



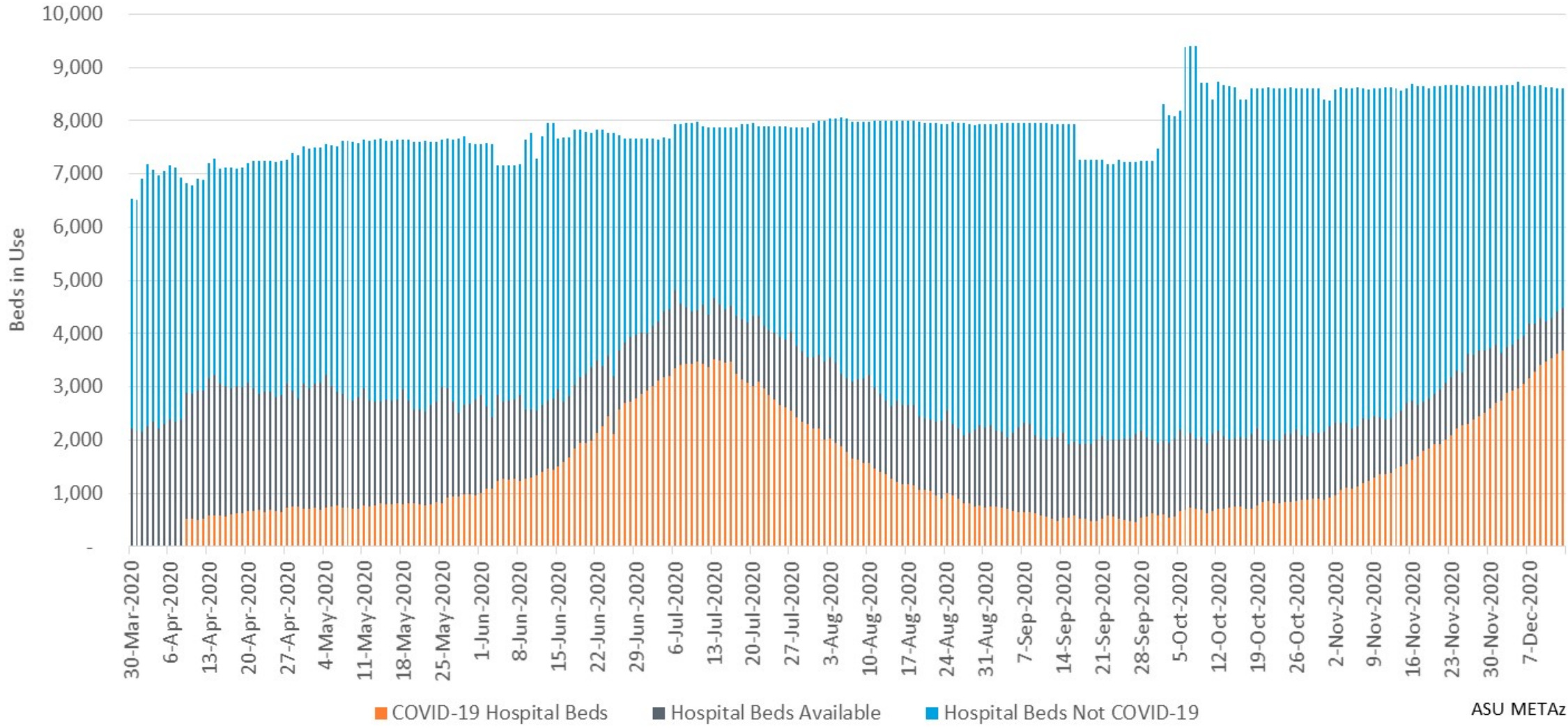
ASU METAz

### Arizona Statewide ICU Bed Usage

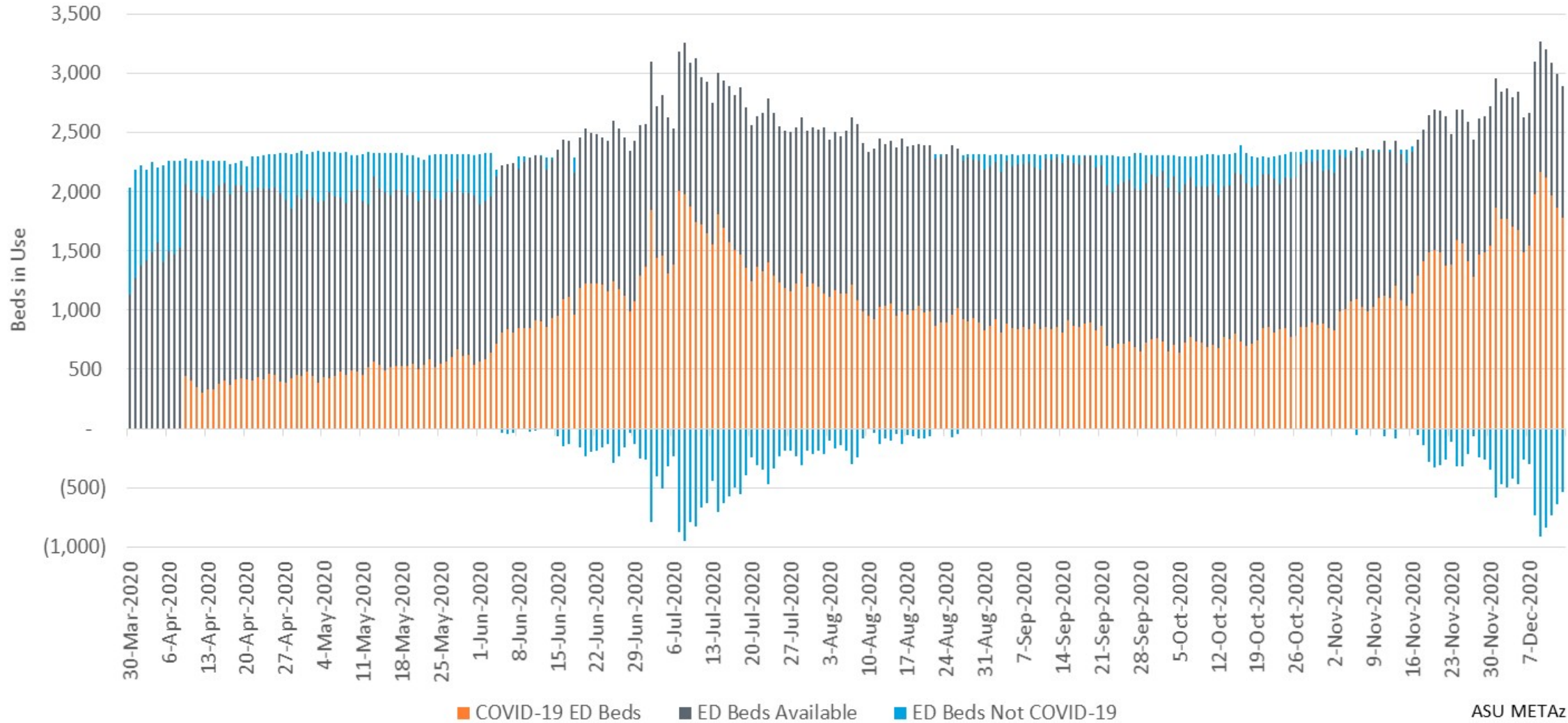


ASU METAz

### Arizona Statewide Inpatient Bed Usage



### Arizona Statewide ED Bed Usage



ASU METAz

Where blue bars are below zero, COVID ED patients exceeded total reported ED bed usage