



COVID Epidemiology Situation Update

Tim Lant, PhD, MAS, Heather Ross PhD, DNP, ANP-BC, Anna Muldoon, MPH, Samantha Sokol, Esma Gel, PhD, and Megan Jehn, PhD

December 7, 2020

Summary

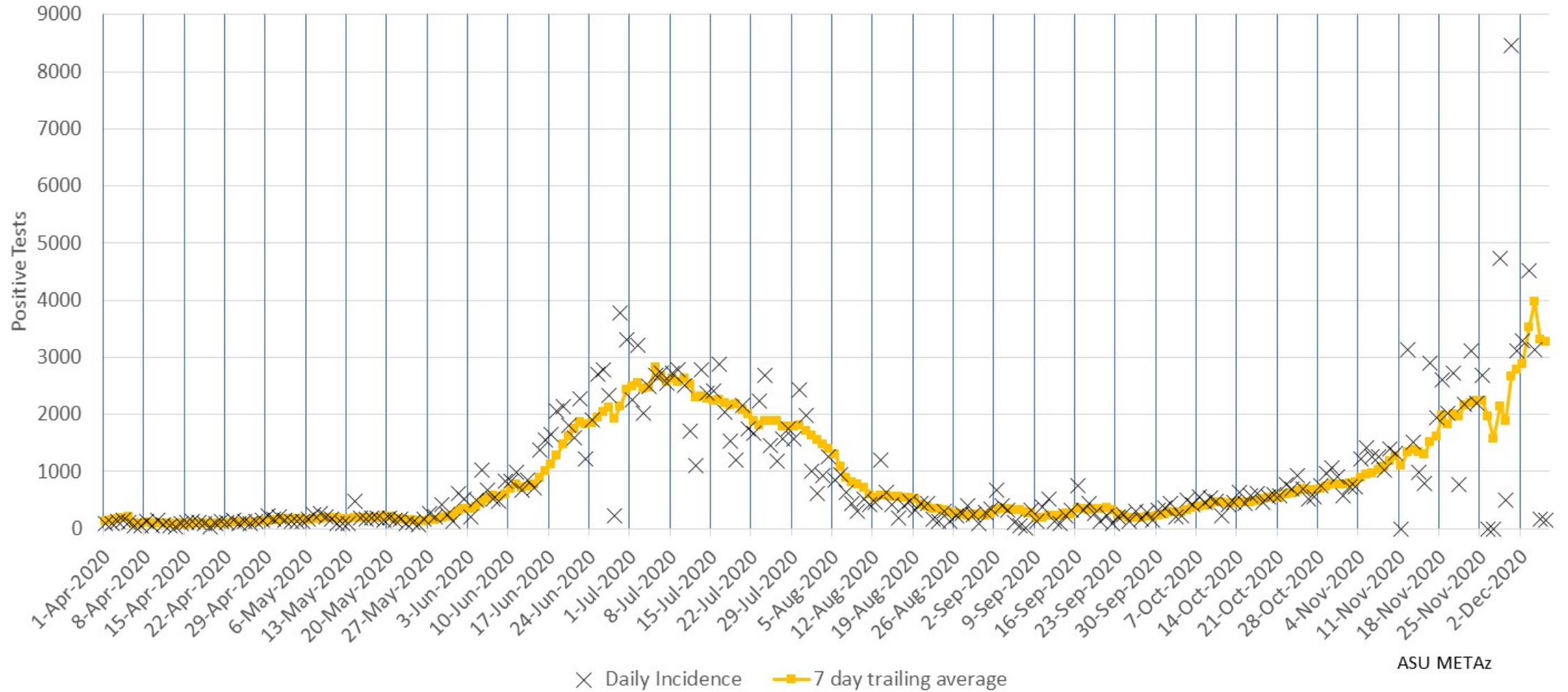
December 7, 2020				
	Statewide		Maricopa	
	Reported Today	Cumulative	Reported Today	Cumulative
Cases	1,567	365,843	174	228,486
PCR Tests	18,340	2,388,839	10,574	1,409,647
% Positive	8.5%	15.3%	1.6%	11.8%
Hospitalizations	25	28,273	13	17,412
Deaths	0	6,950	0	4,153
<i>All data pulled from azdhs.gov. Numbers may not match Maricopa county data.</i>				

- Today's statewide case count is 1,567, with 174 cases (11%) in Maricopa County, much lower than population distribution. This discrepancy is reporting delay versus error from ADHS and MCDPH. The 7-day average for reported cases is now 5,575, a new record high. Monday case reporting remains very low.
- The epi curve continues to increase in Maricopa County and statewide with clear and continued exponential growth. Peak cases by incident date are now 7,311 on Nov 30 (formerly 5,823 on Nov 23), surpassing the former peak of 5,452 on June 29.
- Percent positivity reported today is 8.5% statewide and 1.6% in Maricopa County. Significant irregularities in state data reporting patterns reduce the reliability of day-to-day positivity data.
- Hospital utilization continues to increase. Inpatient bed usage for COVID-19 is at 35% of inpatient beds and 42% of ICU beds statewide. Current hospital utilization is 90% for inpatient beds and 92% for ICU beds including COVID and non-COVID utilization. Hospital resources are at imminent risk of being overwhelmed. Crisis standards of care have not been activated for most facilities statewide.

Maricopa County Analysis



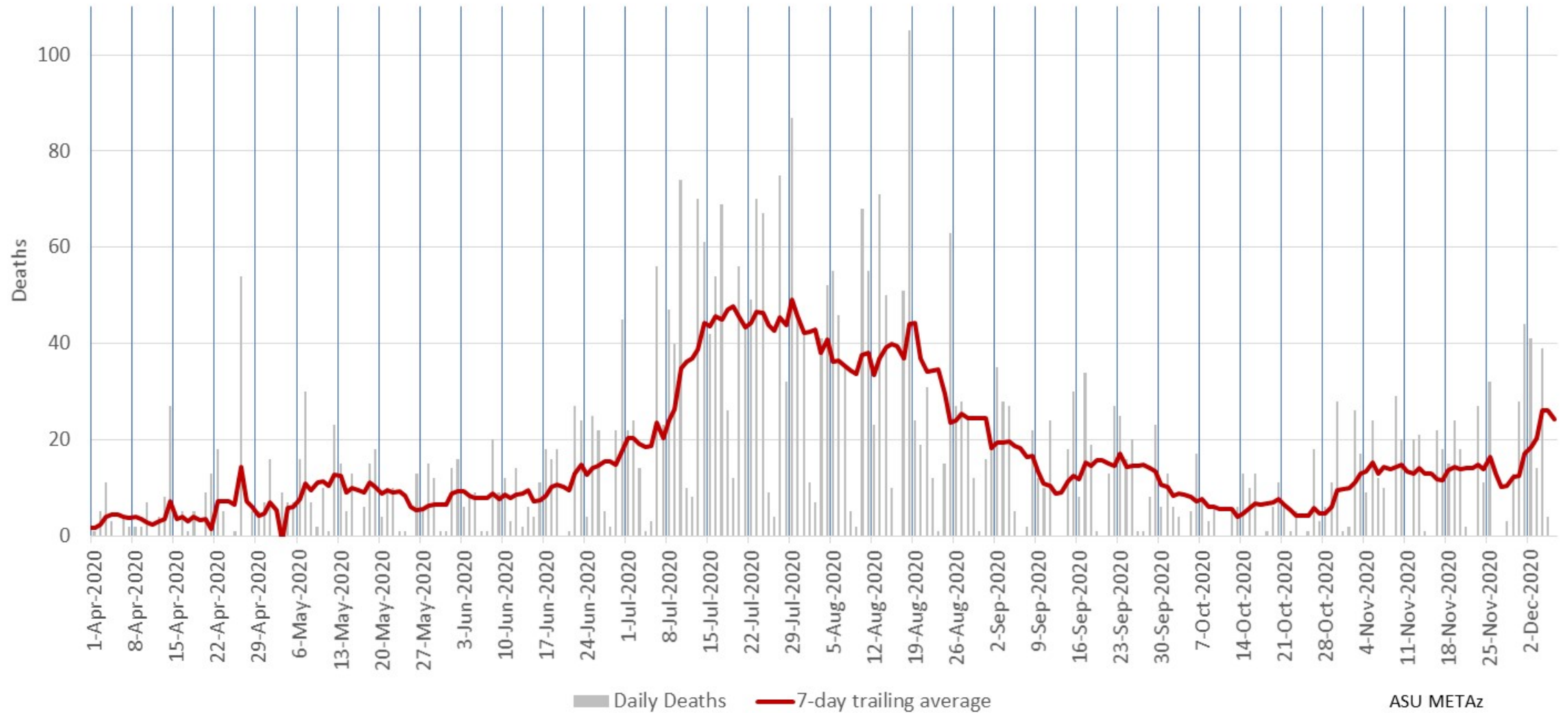
Maricopa County Daily COVID-19 Positive Tests Results Reported (confirmed incidence)



ASU METAz

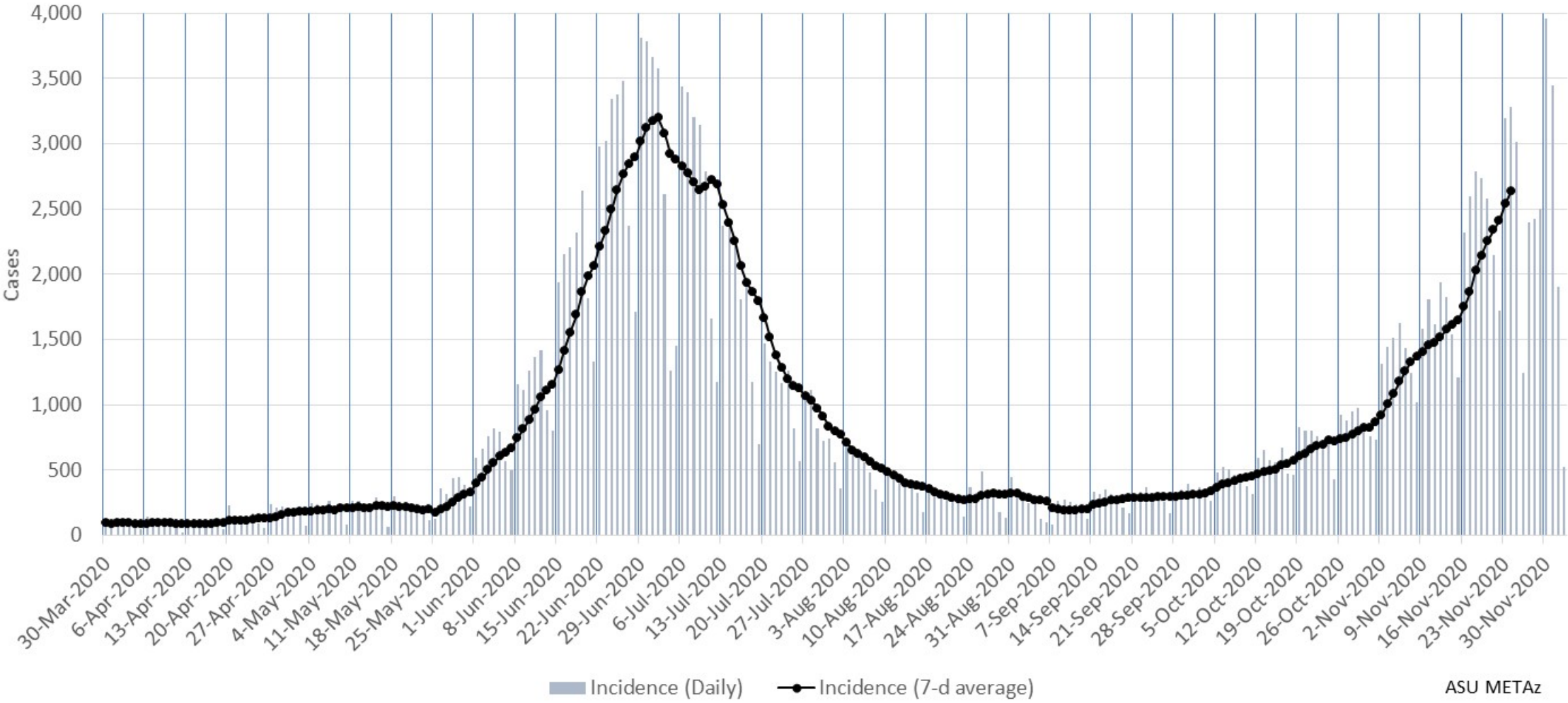
Due to the holiday, 2 days of data were held (Nov 26 & 27) and reported on Nov 28.

Maricopa County Daily COVID-19 Deaths (by date of reporting)



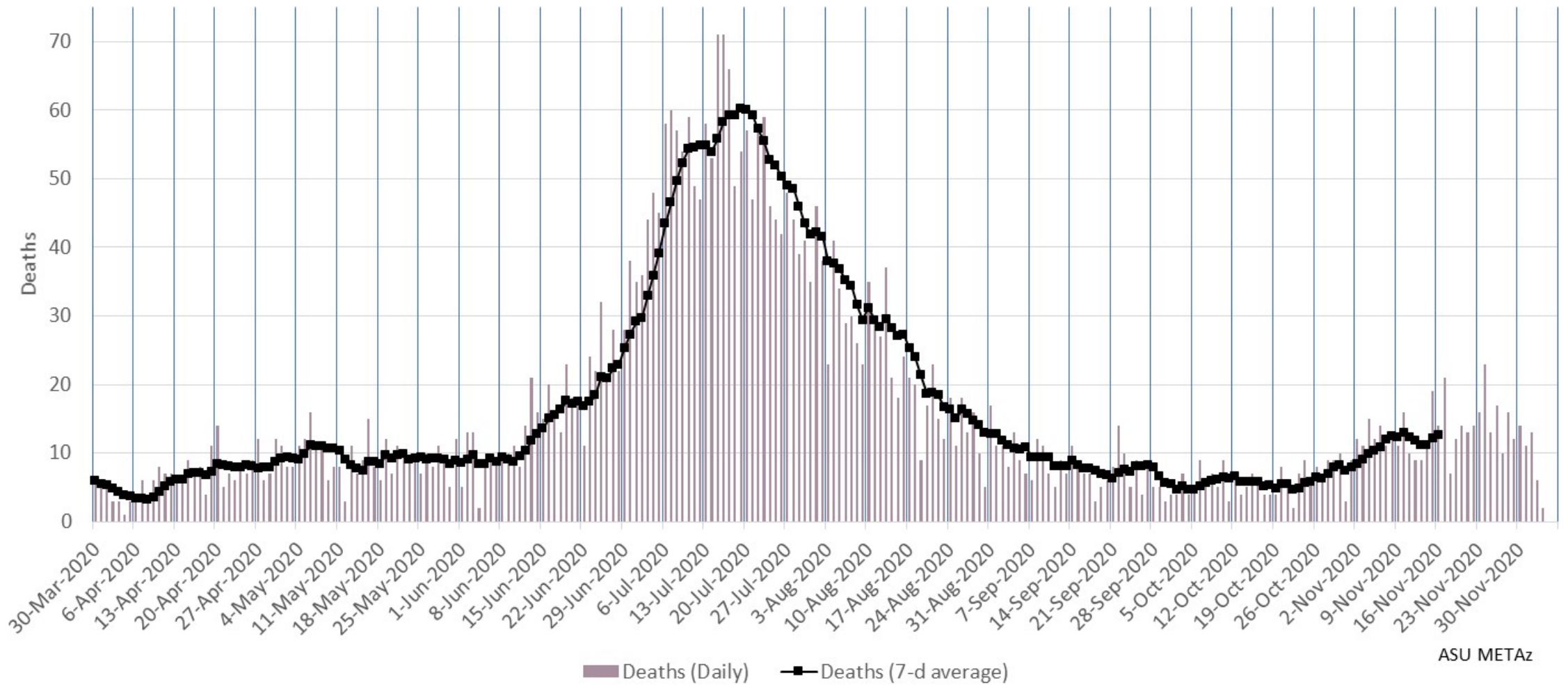
Due to the holiday, 2 days of data were held (Nov 26 & 27) and reported on Nov 28.

Maricopa County Daily COVID-19 Cases by Date of Sample Collection (Epi Curve)



ASU METAz

Maricopa County Daily COVID-19 Deaths by Date of Death (Epi Curve)



ASU METAz

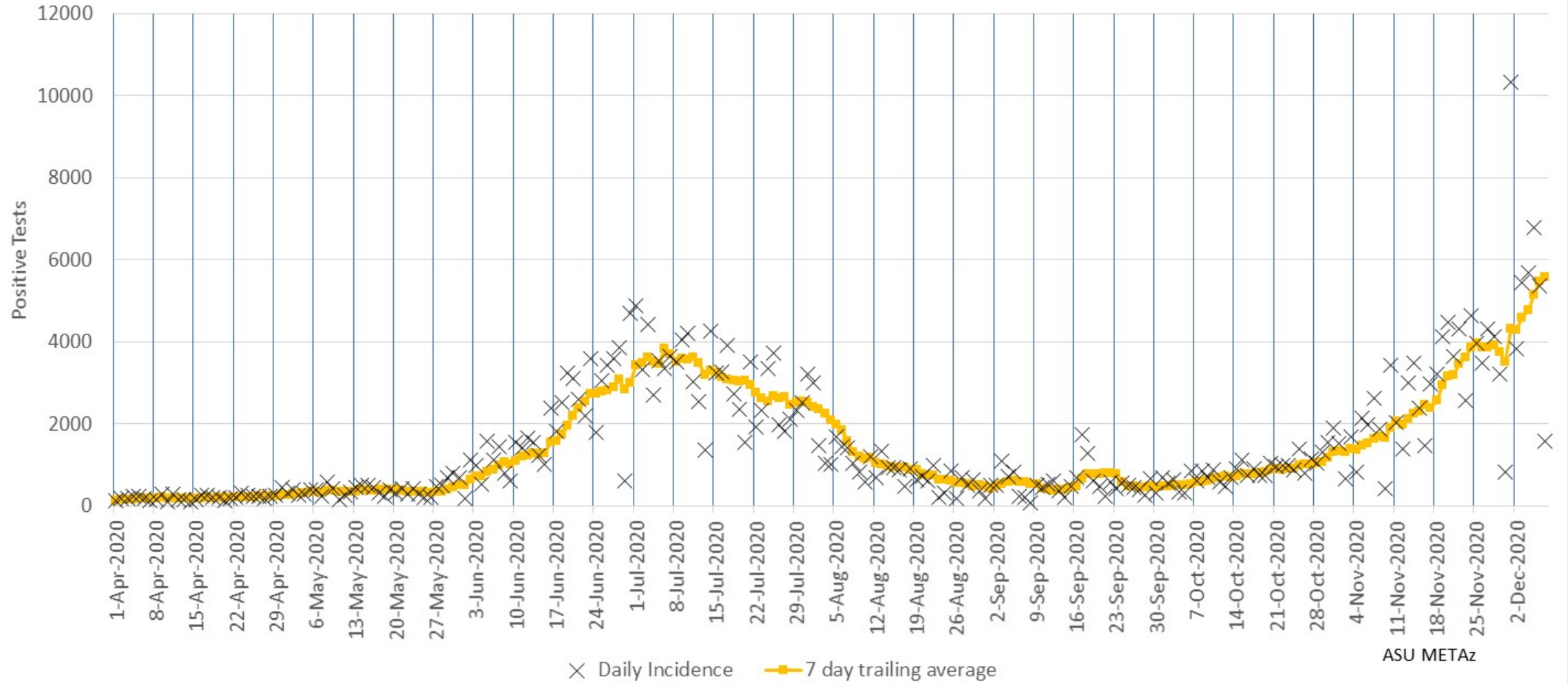
Arizona Statewide Analysis



Epidemiology

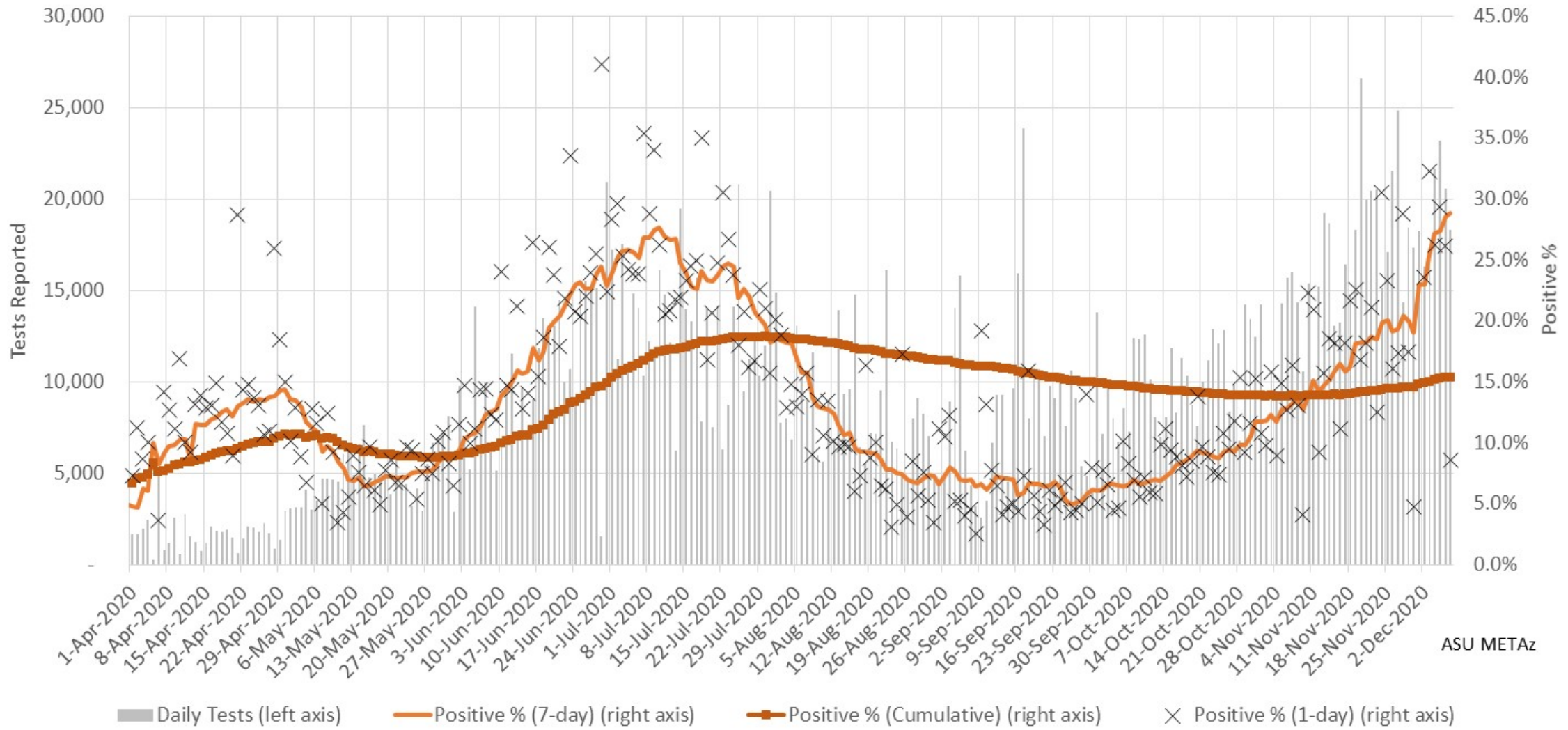


Arizona Statewide Daily COVID-19 Positive Tests Results Reported (confirmed incidence)



ASU METAz

Arizona Statewide Rolling weekly positive COVID-19 test rate

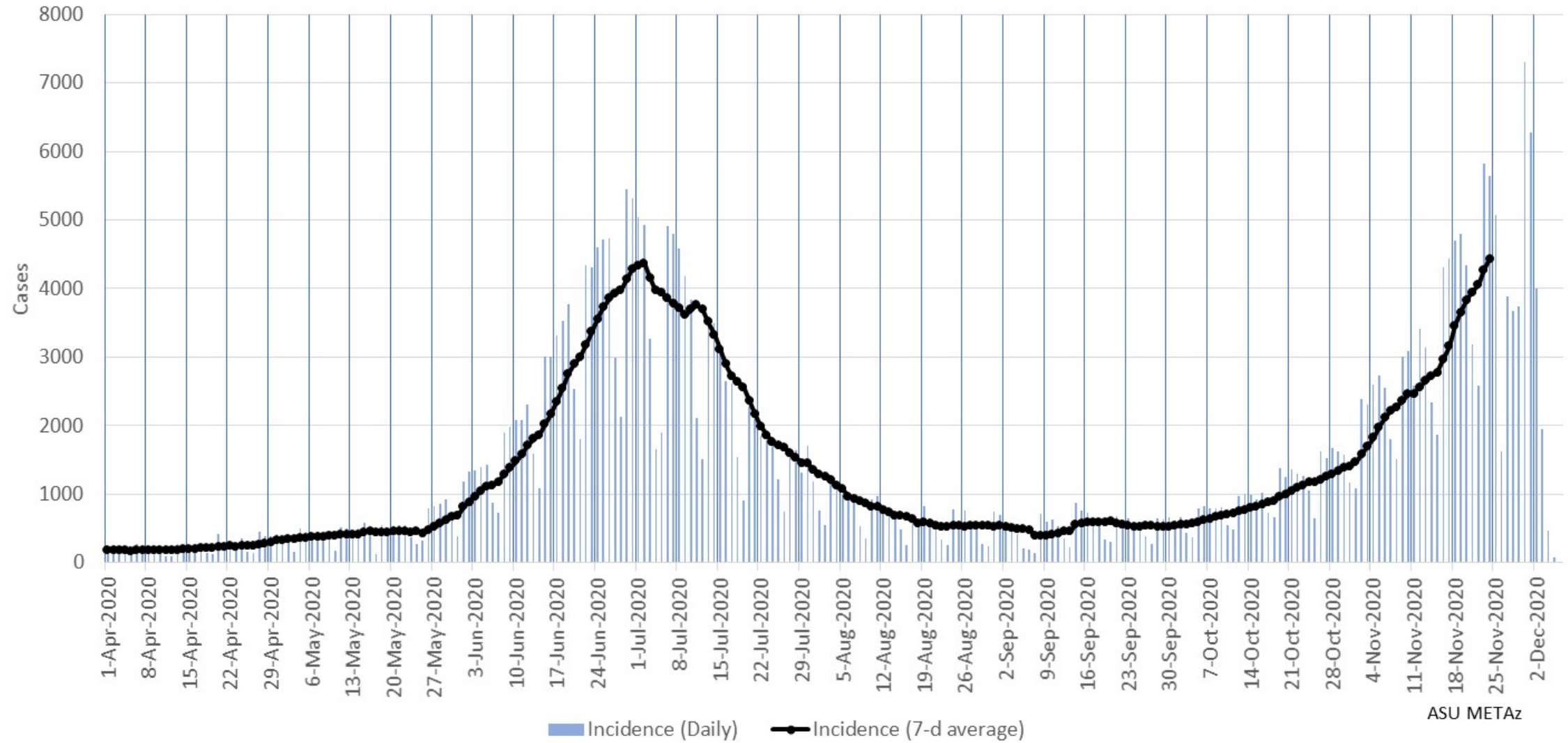


Arizona Statewide Daily COVID-19 Deaths (by date of reporting)



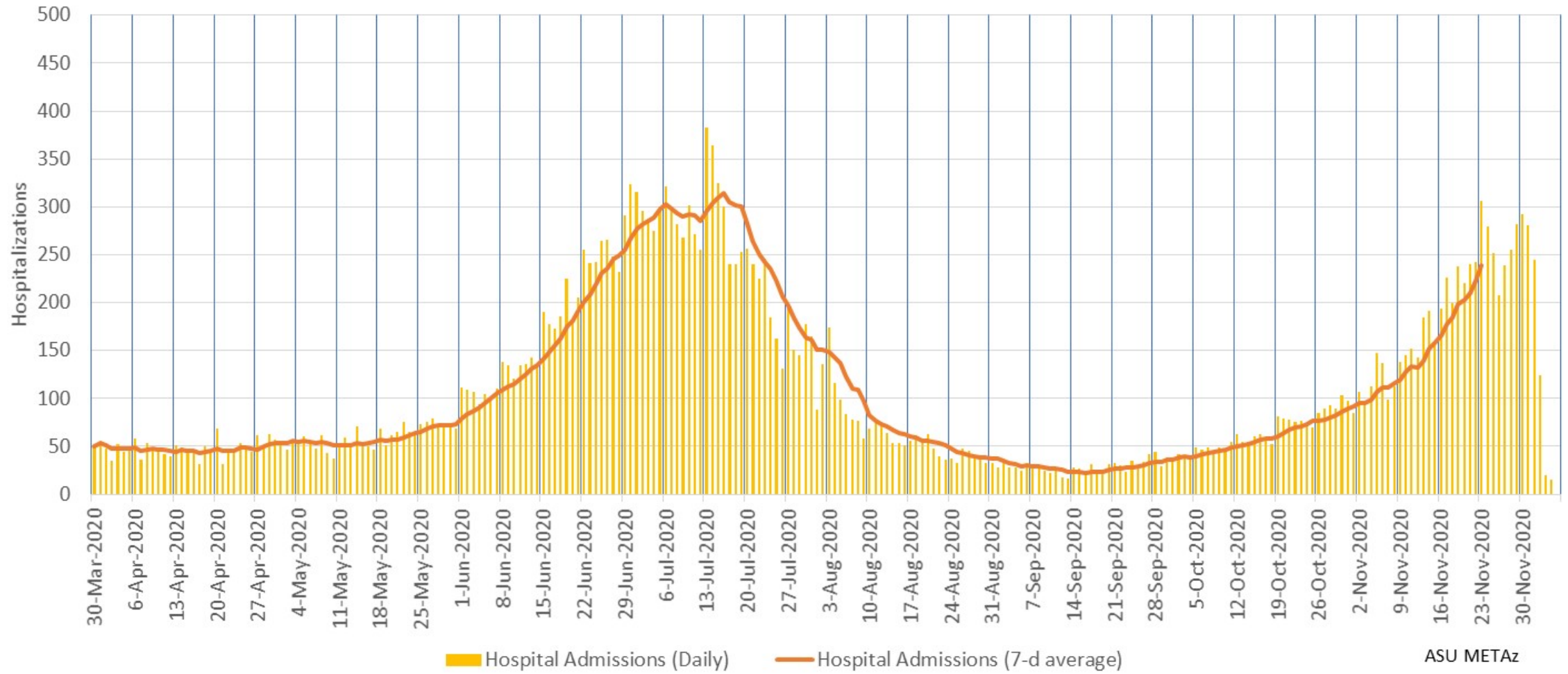
ASU METAz

Arizona Statewide Daily COVID-19 Cases by Date of Sample Collection (Epi Curve)



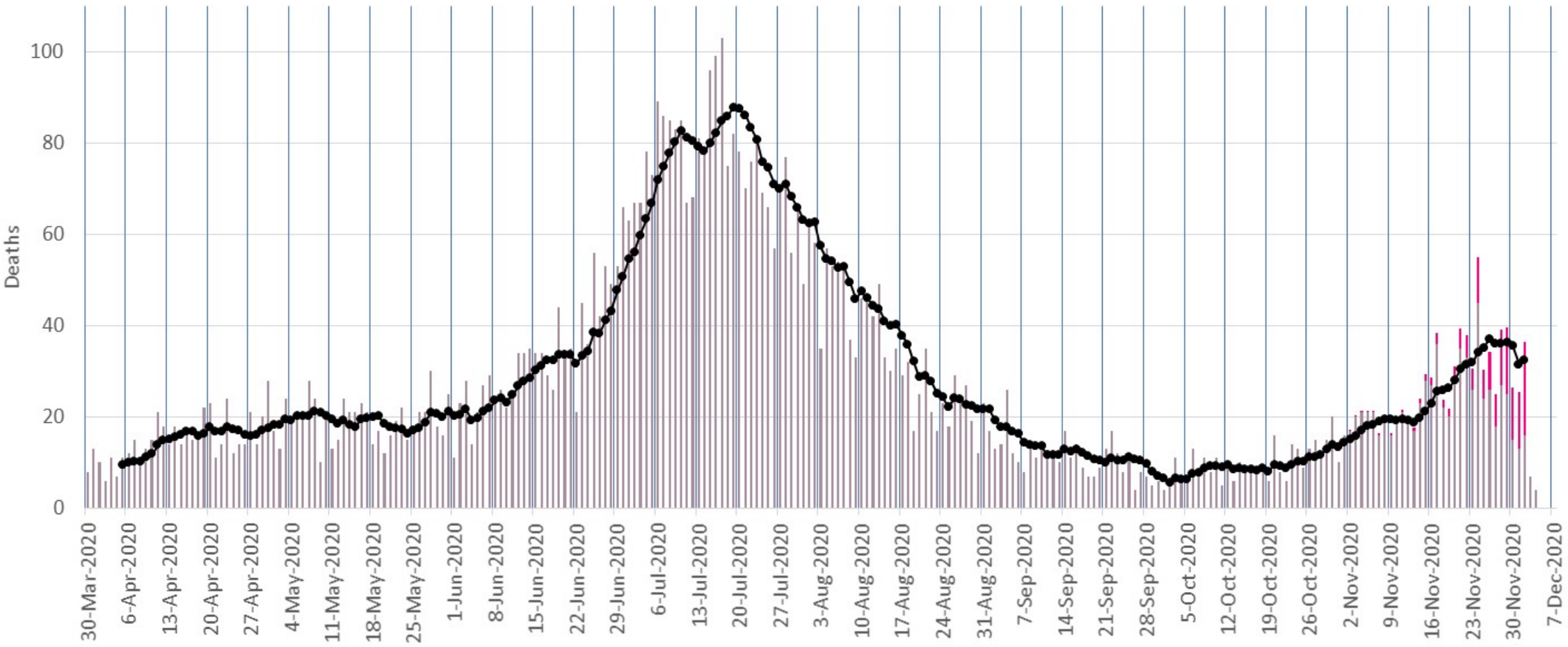
ASU METAz

Arizona Statewide Daily COVID-19 Hospitalizations by Date of Hospitalization (Epi Curve)



ASU METAz

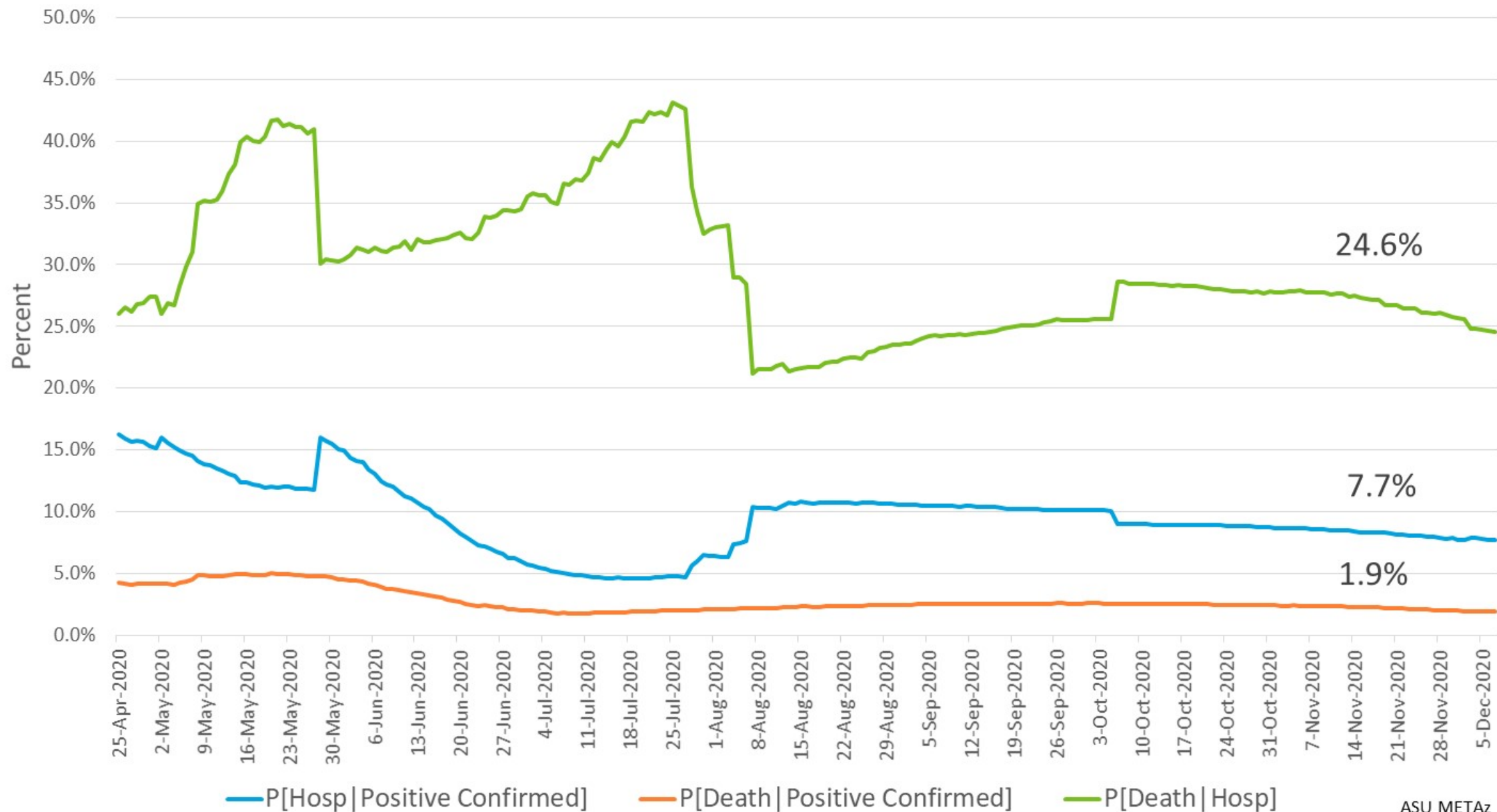
Arizona Statewide Daily COVID-19 Deaths by Date of Death (Epi Curve)



Deaths (Daily) Anticipated Deaths Deaths (7-d average)

ASU METAz

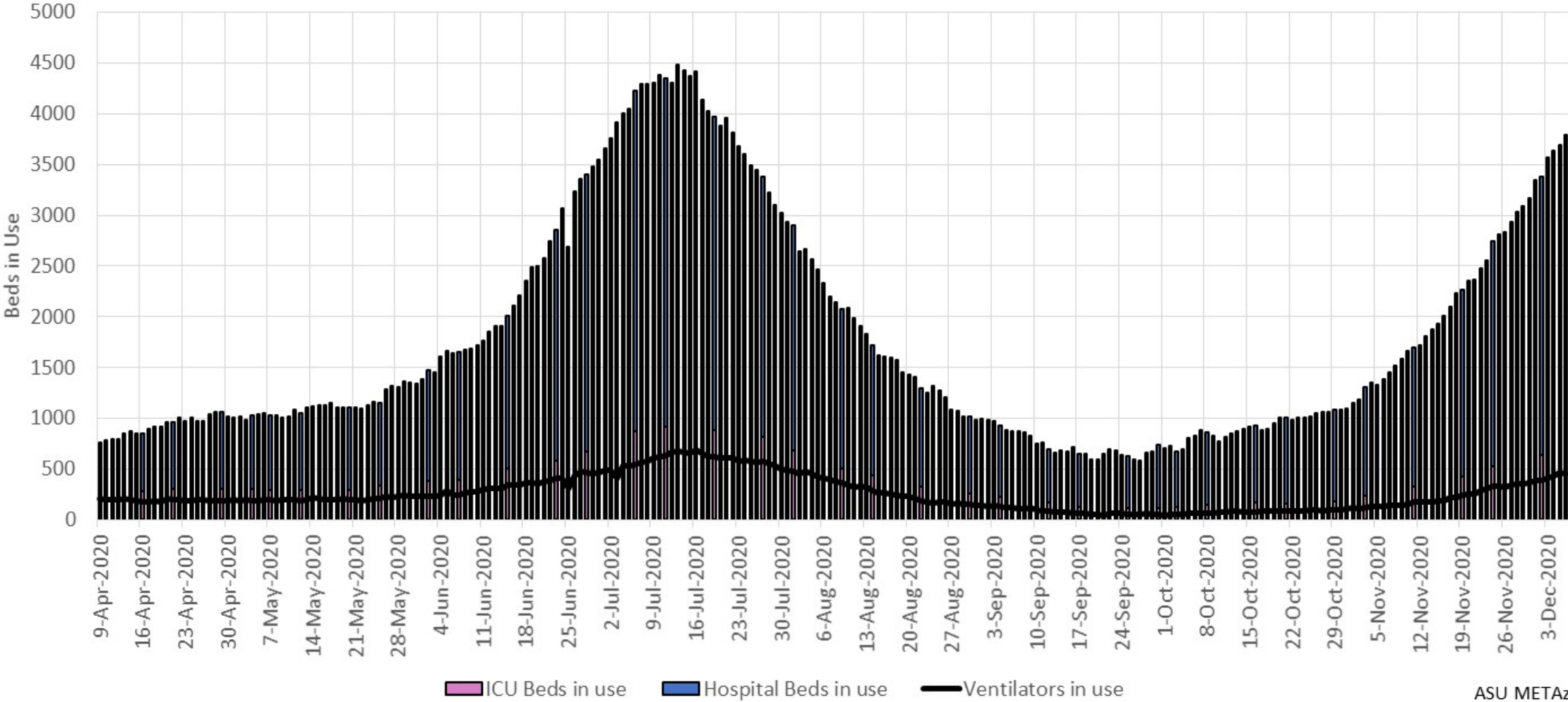
Arizona Statewide Case Fatality and Hospitalization Rates



Hospital Usage

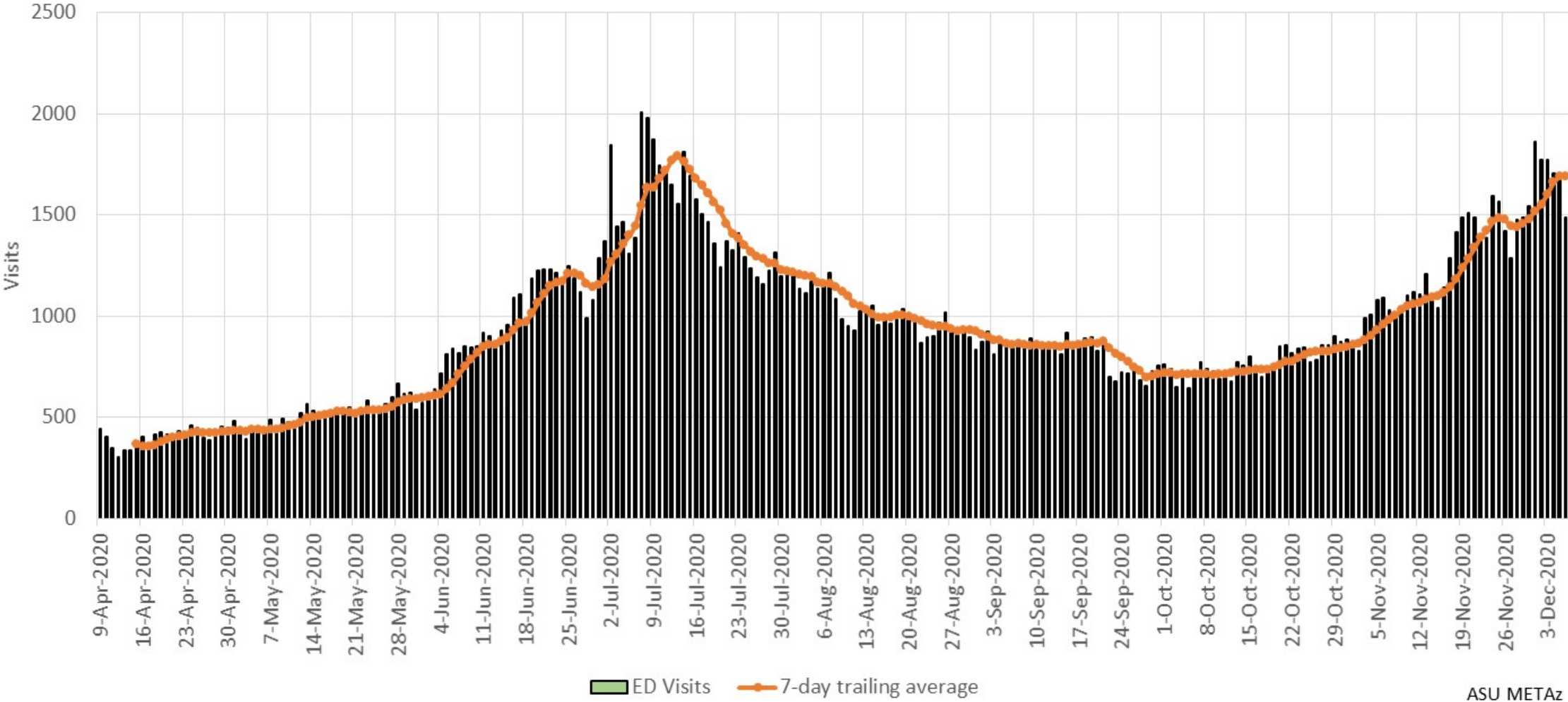


Arizona Statewide COVID-19 Hospital Resource Utilization



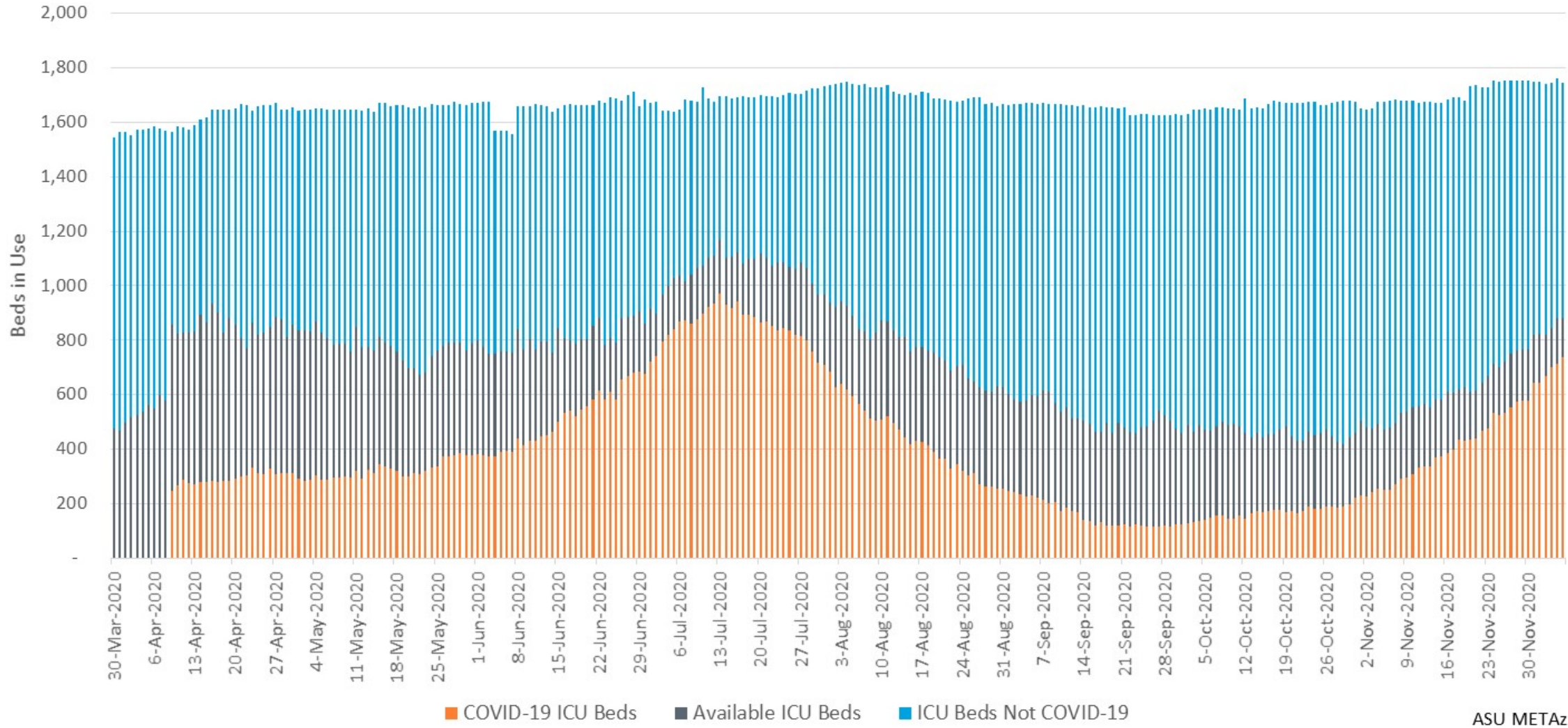
ASU METaz

Arizona Statewide COVID-19 Emergency Department Visits



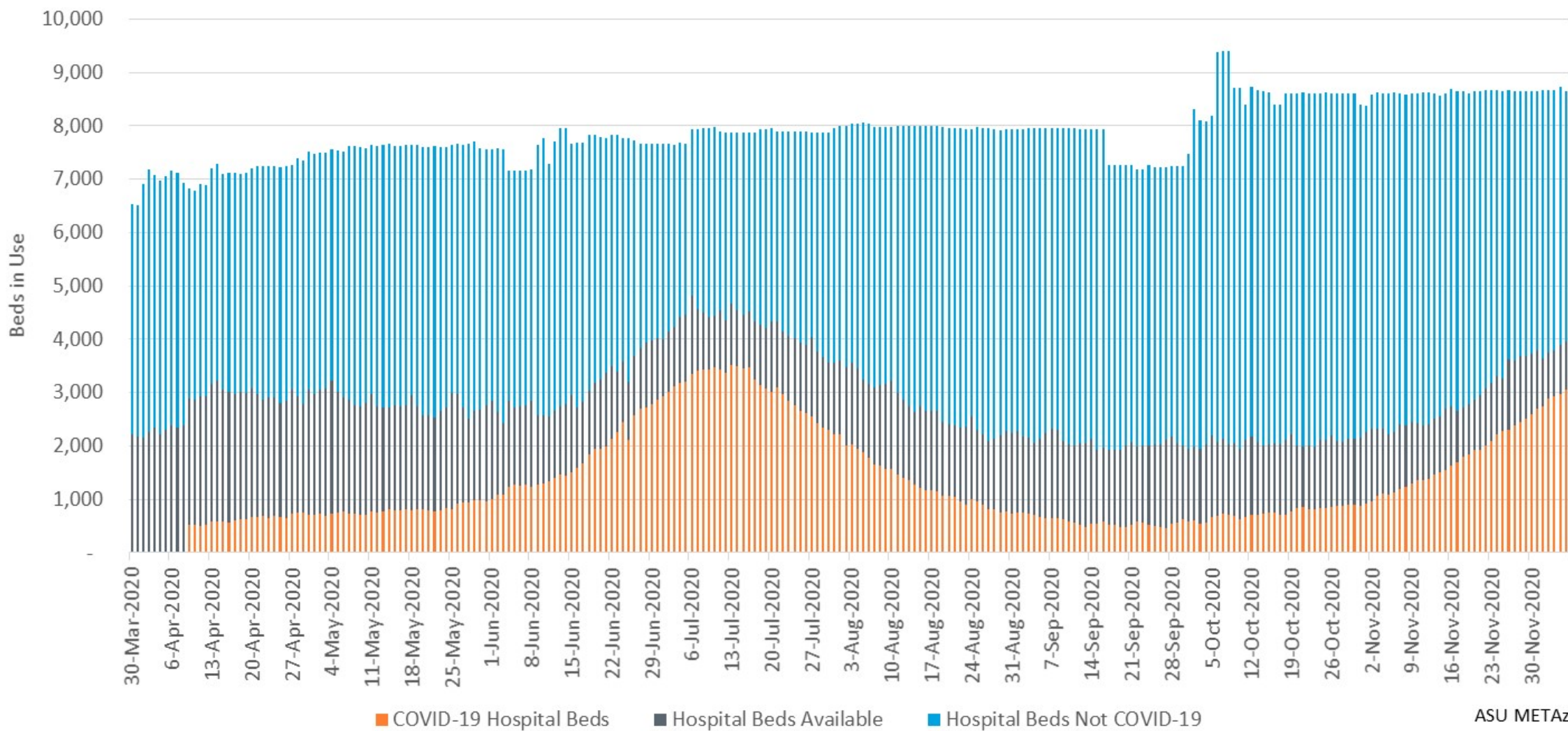
ASU METAz

Arizona Statewide ICU Bed Usage



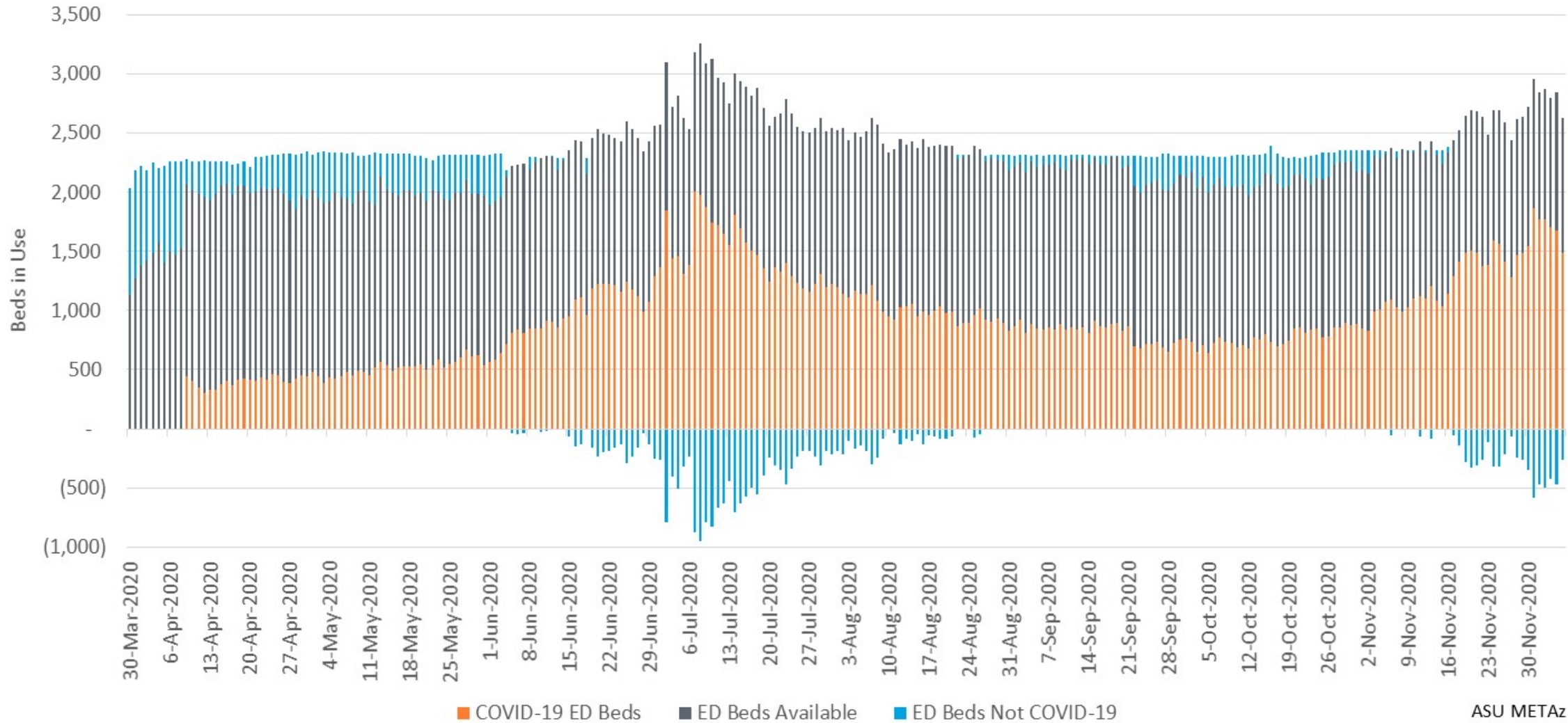
ASU METAz

Arizona Statewide Inpatient Bed Usage



ASU METAz

Arizona Statewide ED Bed Usage



Where blue bars are below zero, COVID ED patients exceeded total reported ED bed usage