



# COVID Epidemiology Situation Update

Tim Lant, PhD, MAS, Heather Ross PhD, DNP, ANP-BC, Anna Muldoon, MPH, Samantha Sokol, Esma Gel, PhD, and Megan Jehn, PhD

**December 3, 2020**

# Summary

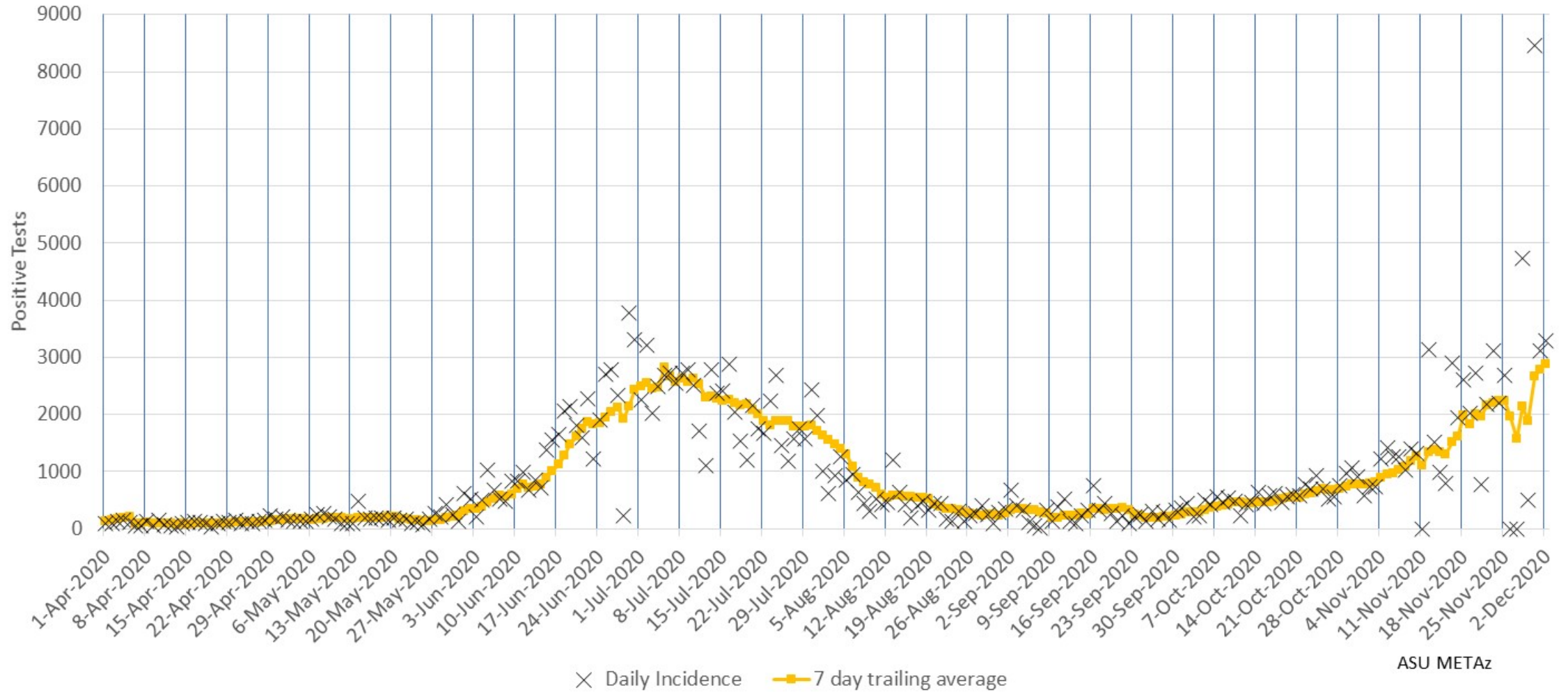
December 3, 2020				
	Statewide		Maricopa	
	Reported Today	Cumulative	Reported Today	Cumulative
<b>Cases</b>	5,442	346,421	3,549	218,935
<b>PCR Tests</b>	16,880	2,305,084	10,378	1,360,962
<b>% Positive</b>	32.2%	15.0%	34.2%	11.6%
<b>Hospitalizations</b>	1144	27,456	610	16,930
<b>Deaths</b>	82	6,821	44	4,080
<i>All data pulled from azdhs.gov. Numbers may not match Maricopa county data.</i>				

- Today's statewide case count is 5,442, with 3,549 cases (65.2%) in Maricopa County, slightly higher than population distribution. The 7-day average for reported cases is now 4,585, a new record high.
- The epi curve continues to increase in Maricopa County and statewide with clear and continued exponential growth. Peak cases by incident date are now 5,724 on Nov 23, surpassing the former peak of 5,452 on June 29.
- Percent positivity reported today is 32.2% statewide and 34.2% in Maricopa County. Significant irregularities in state data reporting patterns reduce the reliability of day-to-day positivity data.
- Hospital utilization continues to increase. Inpatient bed usage for COVID-19 is at 32% of inpatient beds and 37% of ICU beds statewide. Current hospital utilization is 90% for inpatient beds and 90% for ICU beds including COVID and non-COVID utilization. Hospital resources are at imminent risk of being overwhelmed. Crisis standards of care have not been activated.

# Maricopa County Analysis



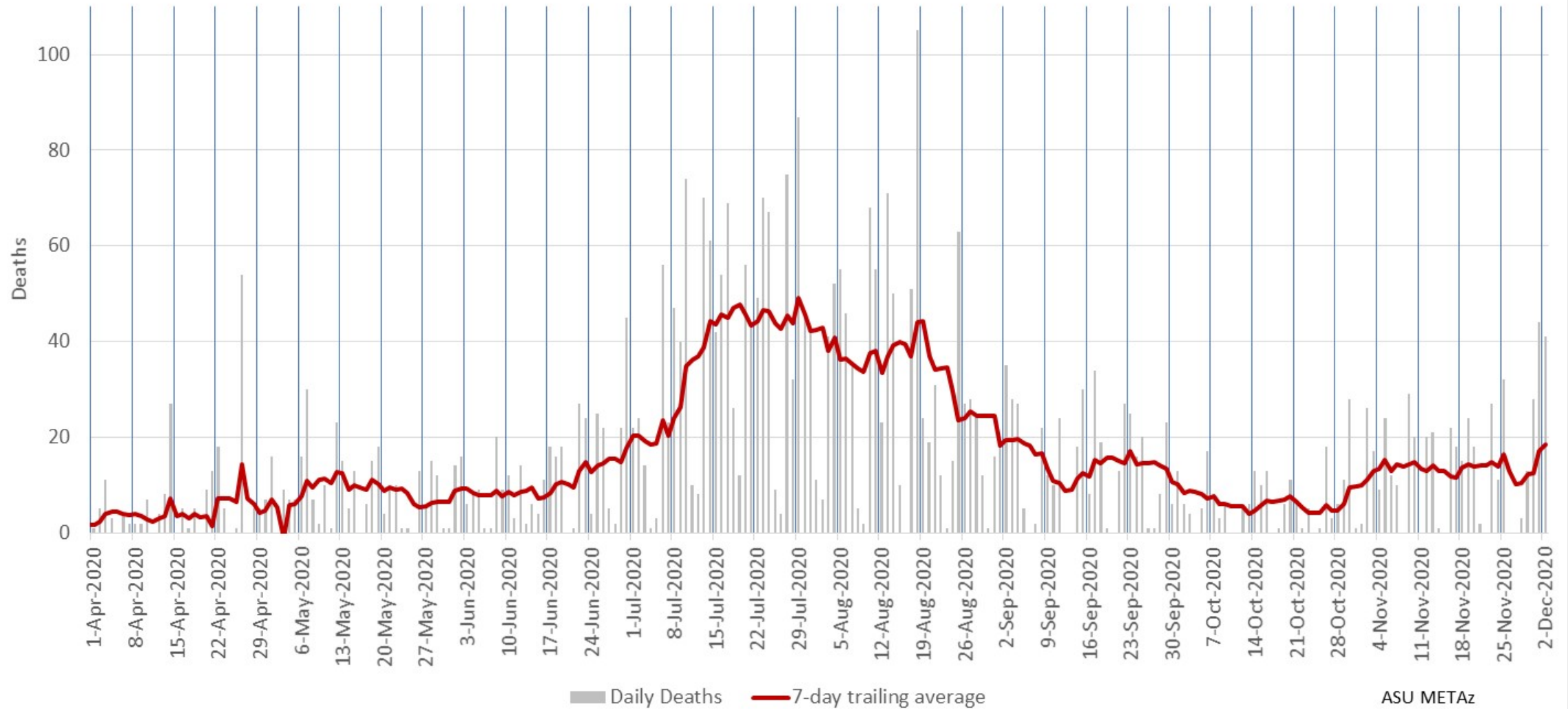
### Maricopa County Daily COVID-19 Positive Tests Results Reported (confirmed incidence)



ASU METAz

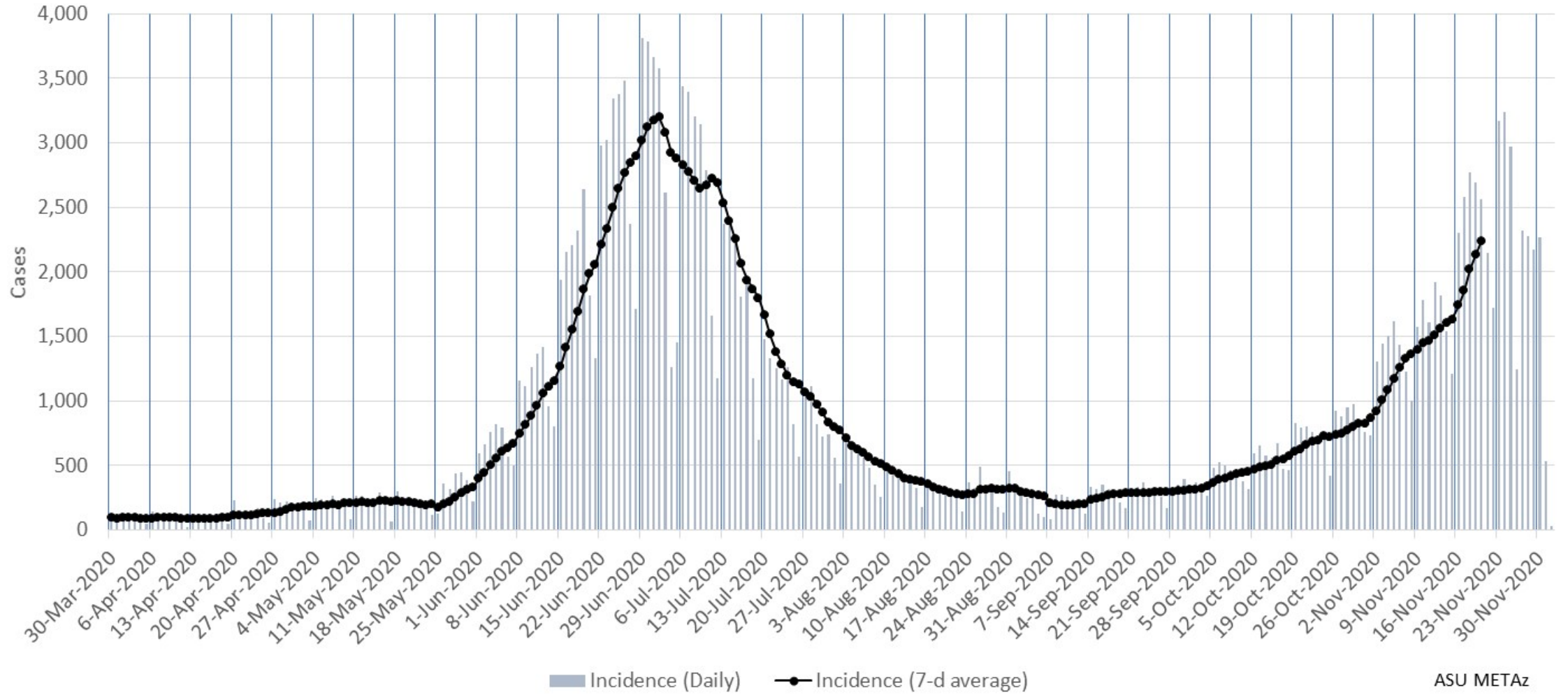
Due to the holiday, 2 days of data were held (Nov 26 & 27) and reported on Nov 28.

Maricopa County Daily COVID-19 Deaths (by date of reporting)



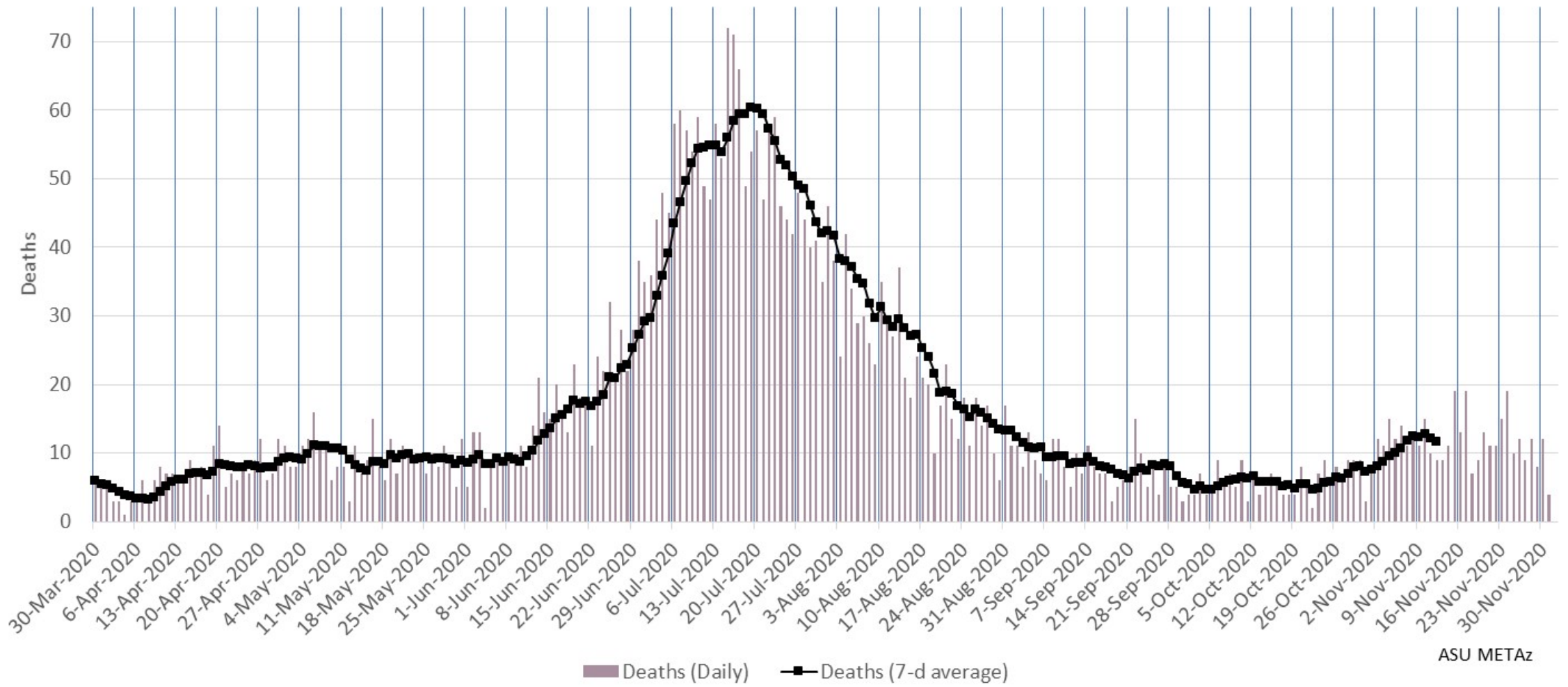
Due to the holiday, 2 days of data were held (Nov 26 & 27) and reported on Nov 28.

### Maricopa County Daily COVID-19 Cases by Date of Sample Collection (Epi Curve)



ASU METAz

### Maricopa County Daily COVID-19 Deaths by Date of Death (Epi Curve)



ASU METAz

# Arizona Statewide Analysis

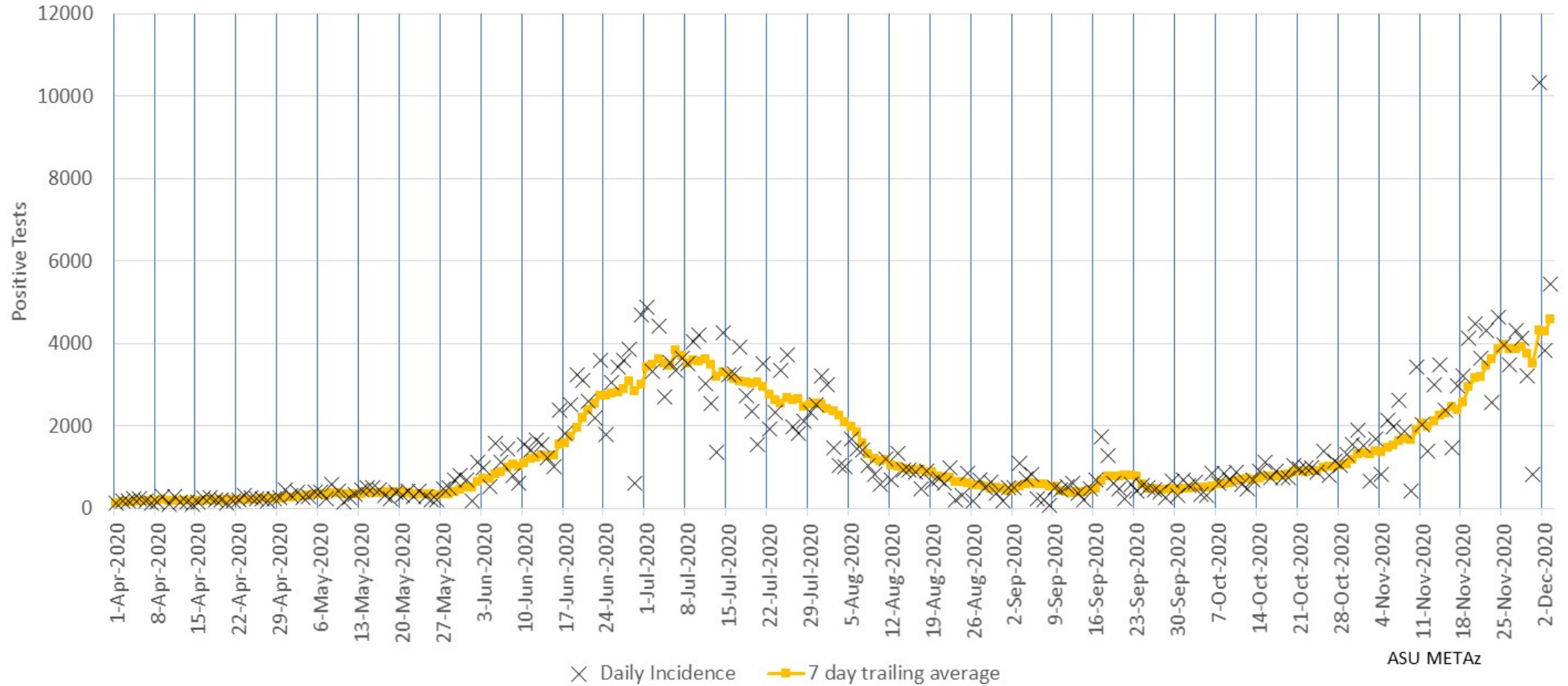




# Epidemiology

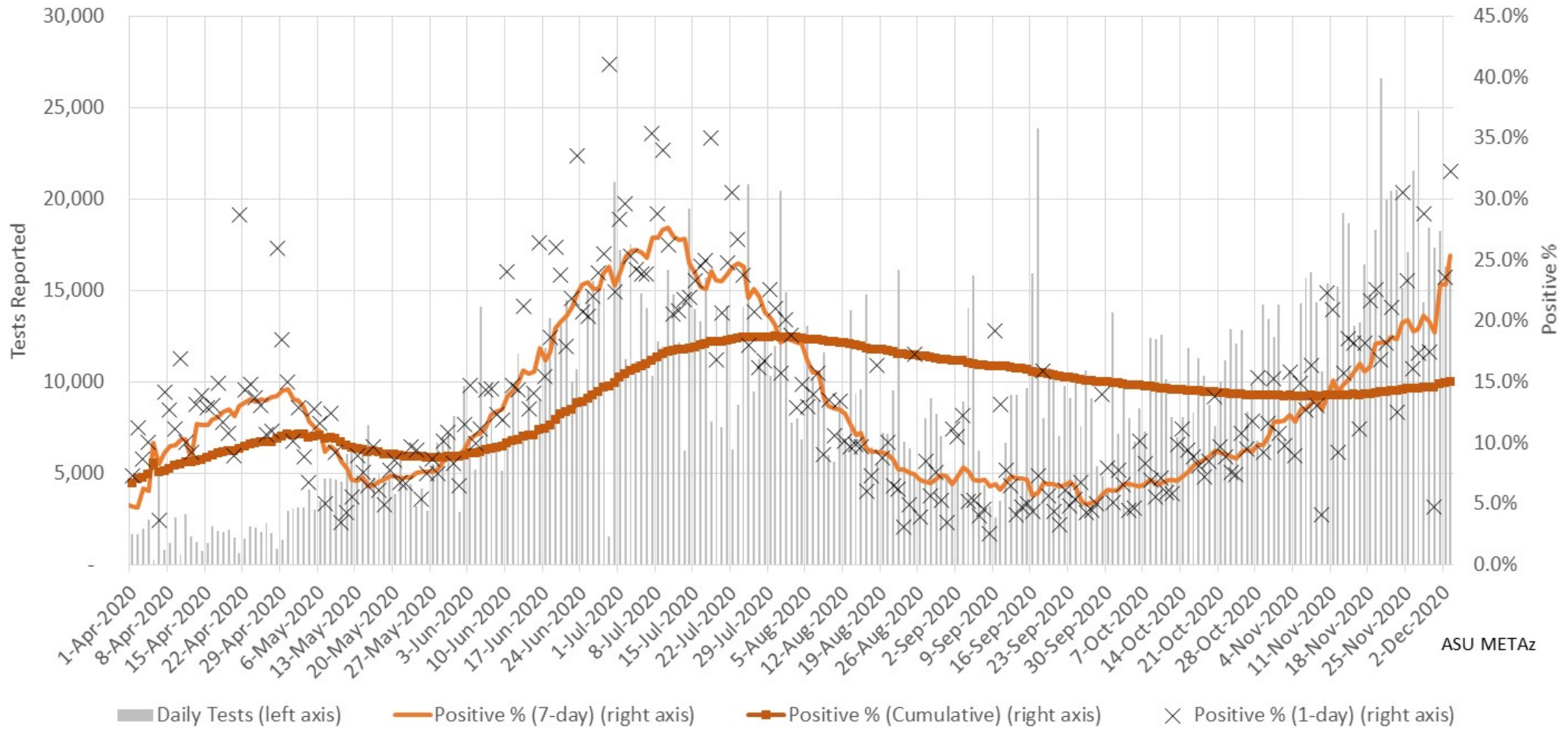


### Arizona Statewide Daily COVID-19 Positive Tests Results Reported (confirmed incidence)

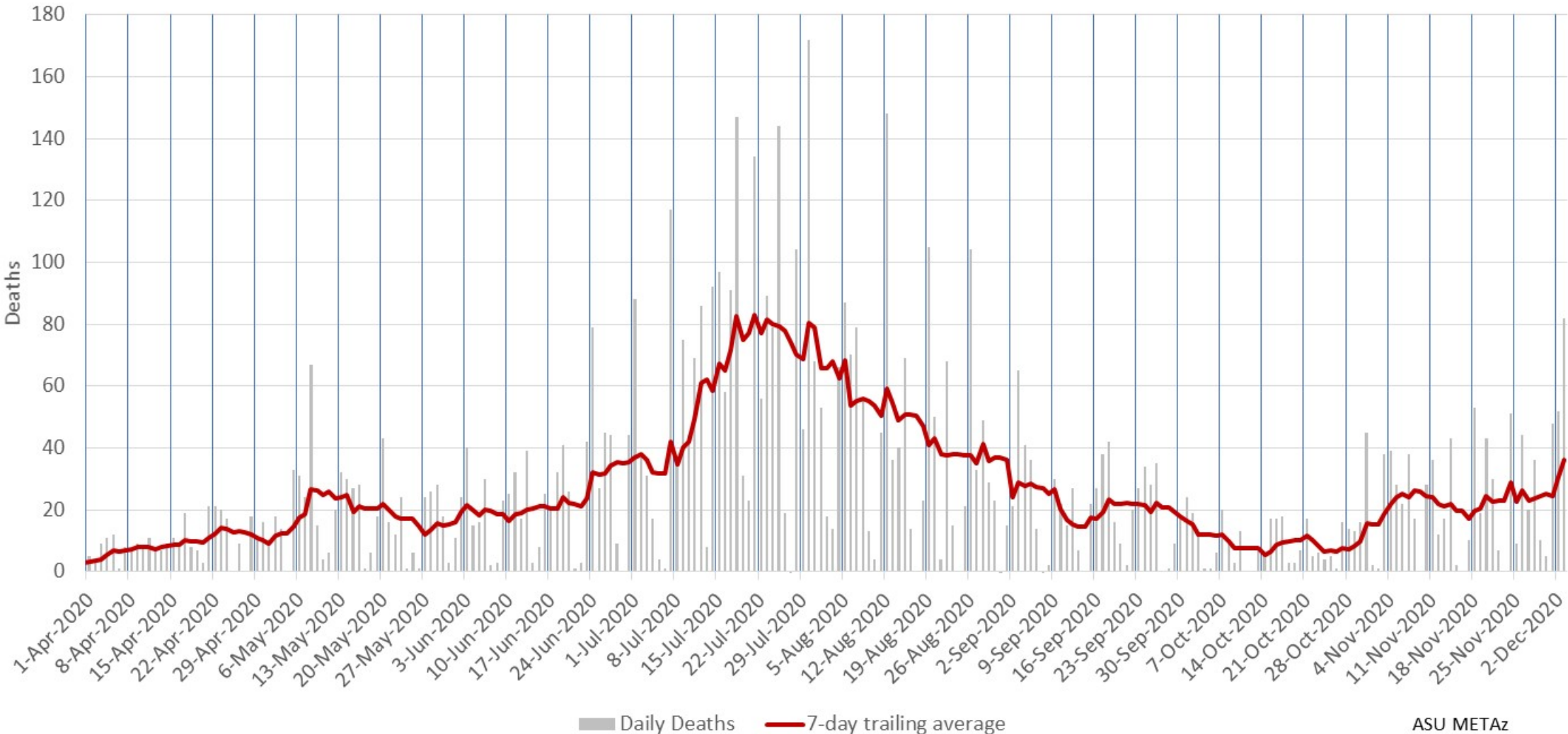


ASU METAz

### Arizona Statewide Rolling weekly positive COVID-19 test rate

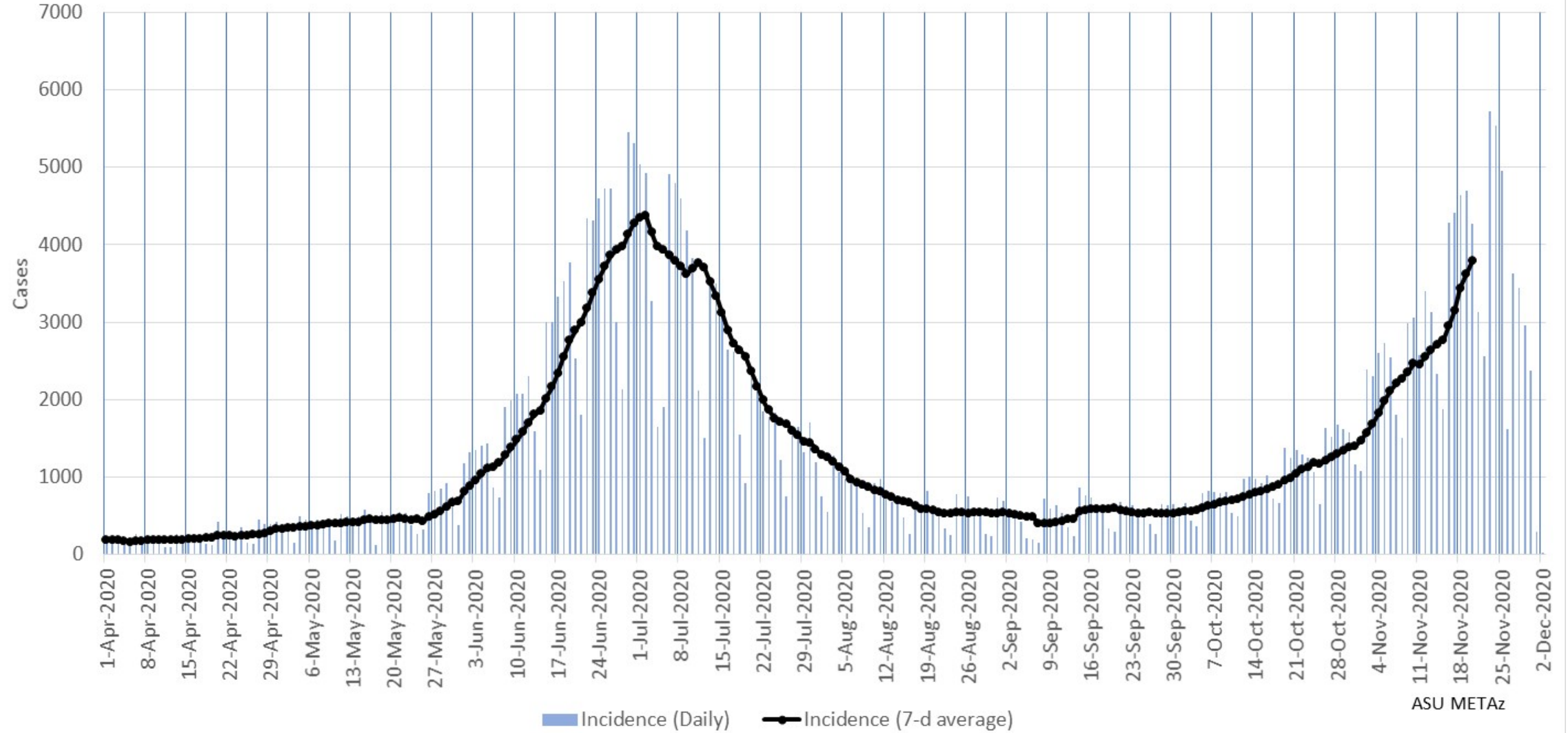


### Arizona Statewide Daily COVID-19 Deaths (by date of reporting)



ASU METAz

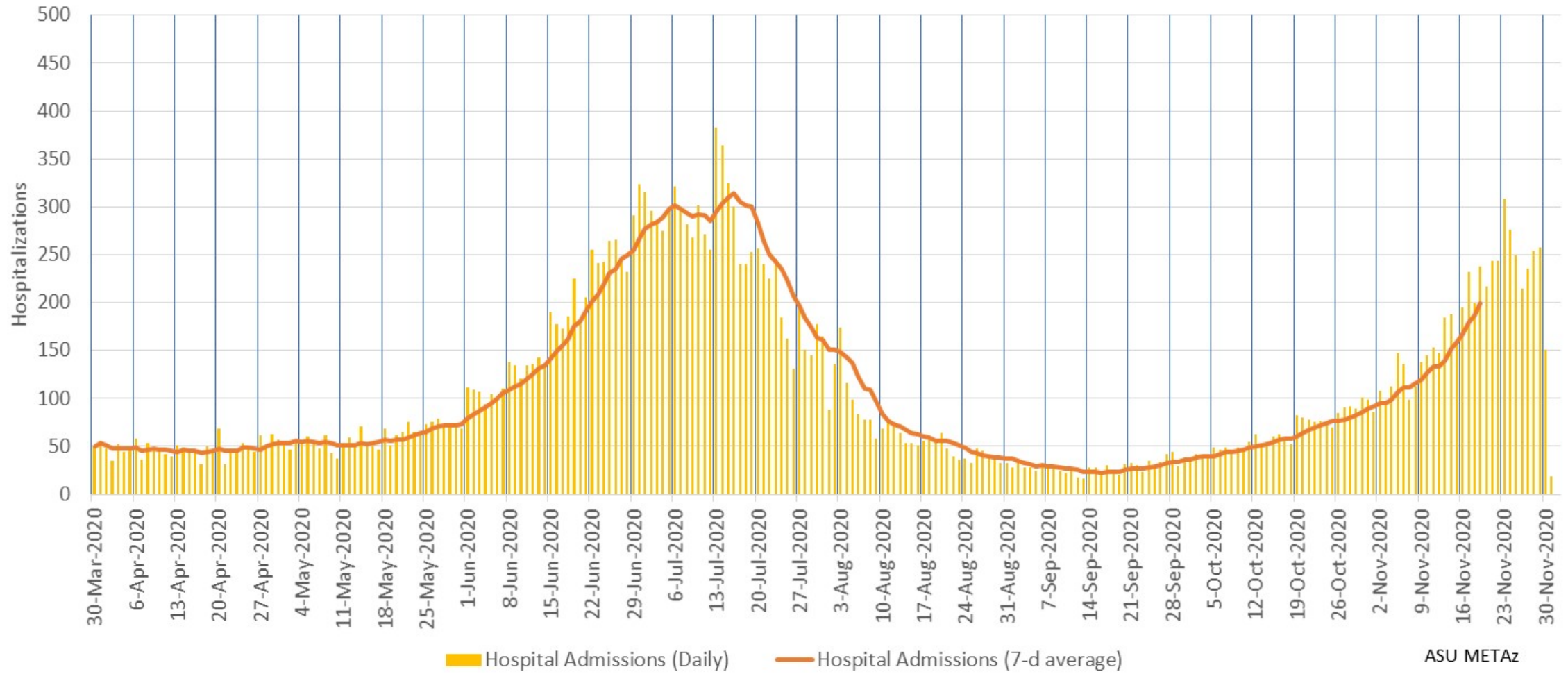
# Arizona Statewide Daily COVID-19 Cases by Date of Sample Collection (Epi Curve)



ASU METAz

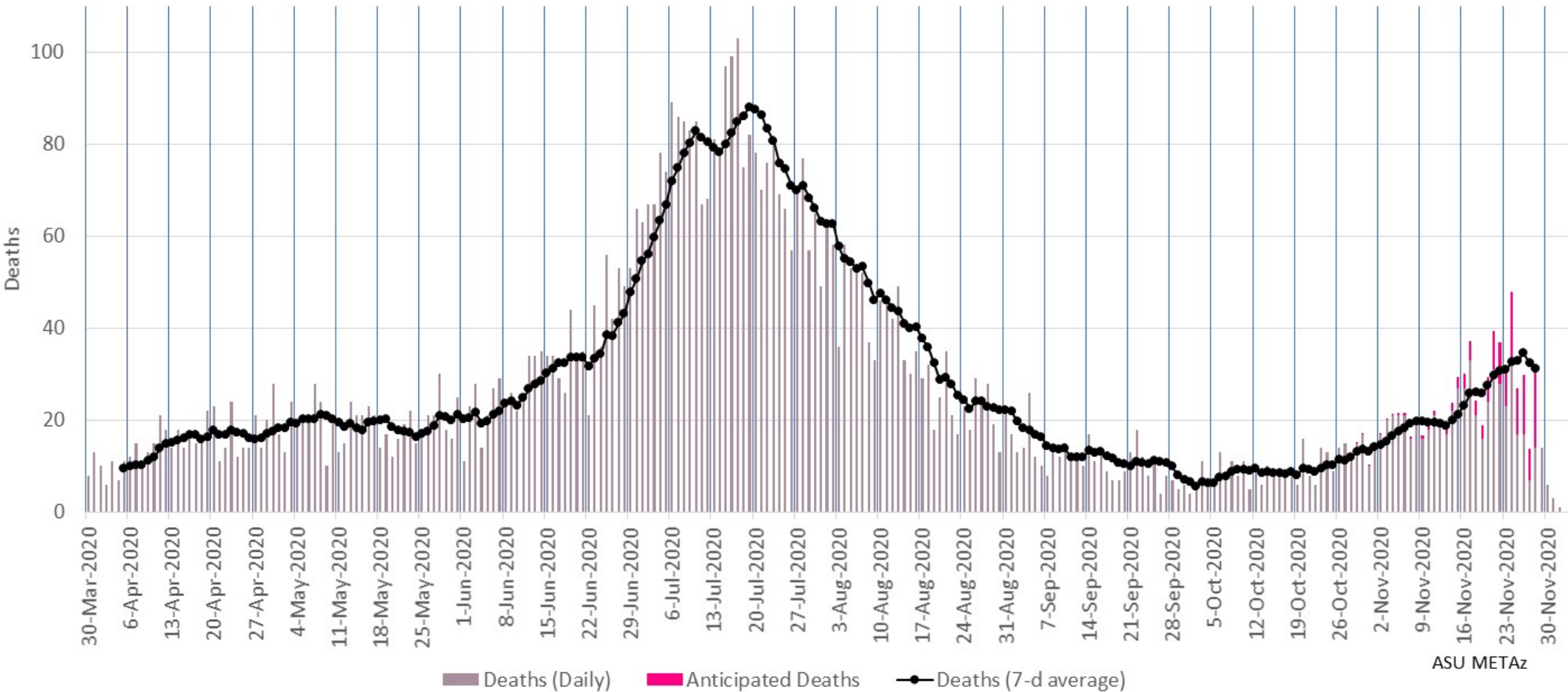


Arizona Statewide Daily COVID-19 Hospitalizations by Date of Hospitalization  
(Epi Curve)



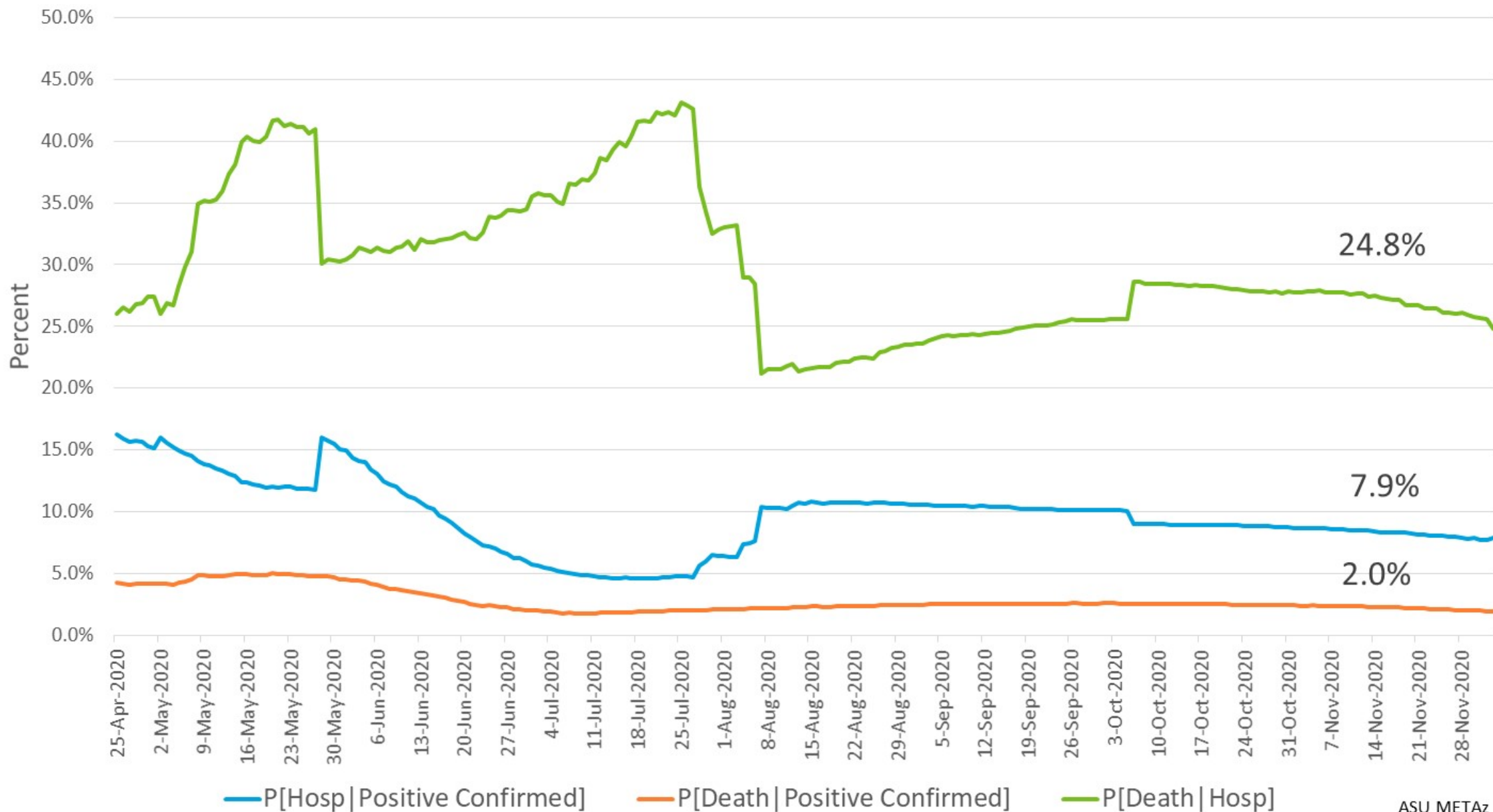
ASU METAz

### Arizona Statewide Daily COVID-19 Deaths by Date of Death (Epi Curve)



ASU METAz

# Arizona Statewide Case Fatality and Hospitalization Rates

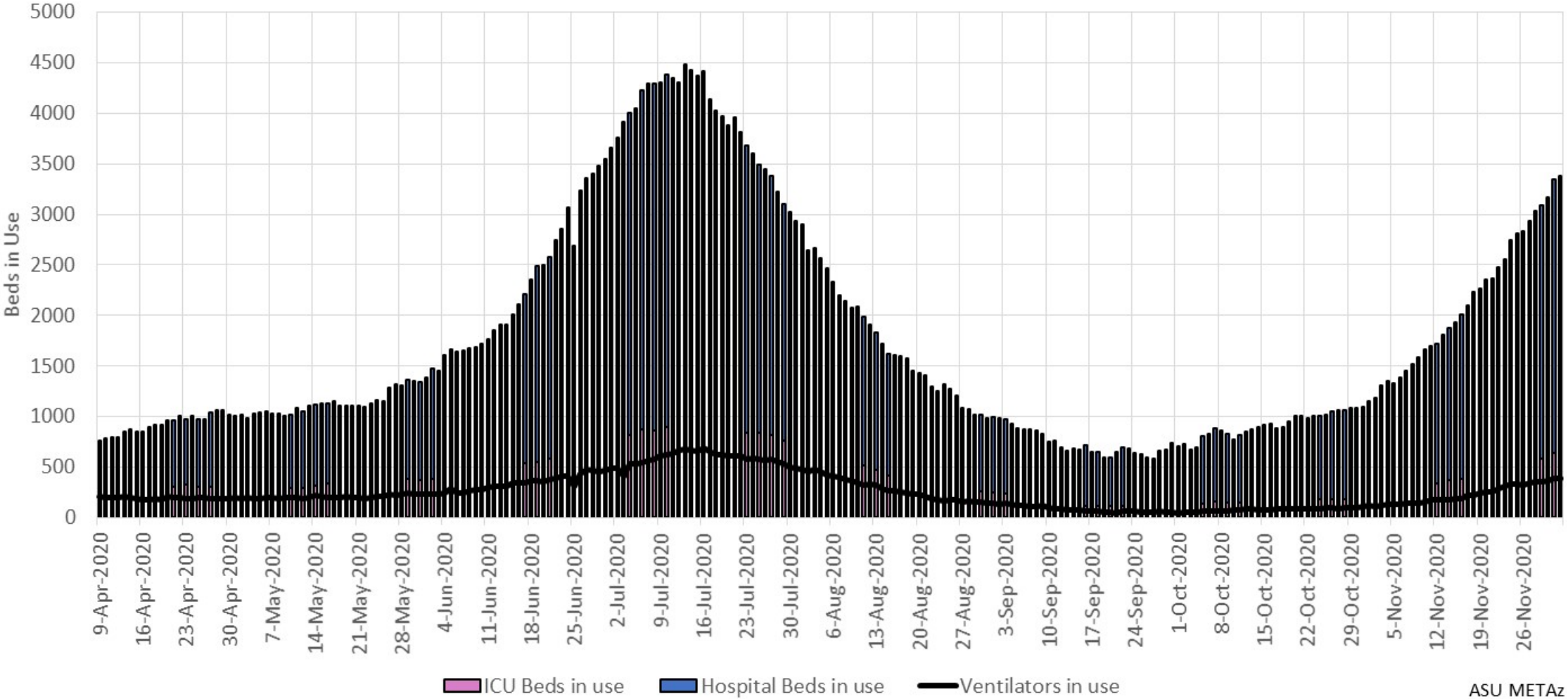




# Hospital Usage

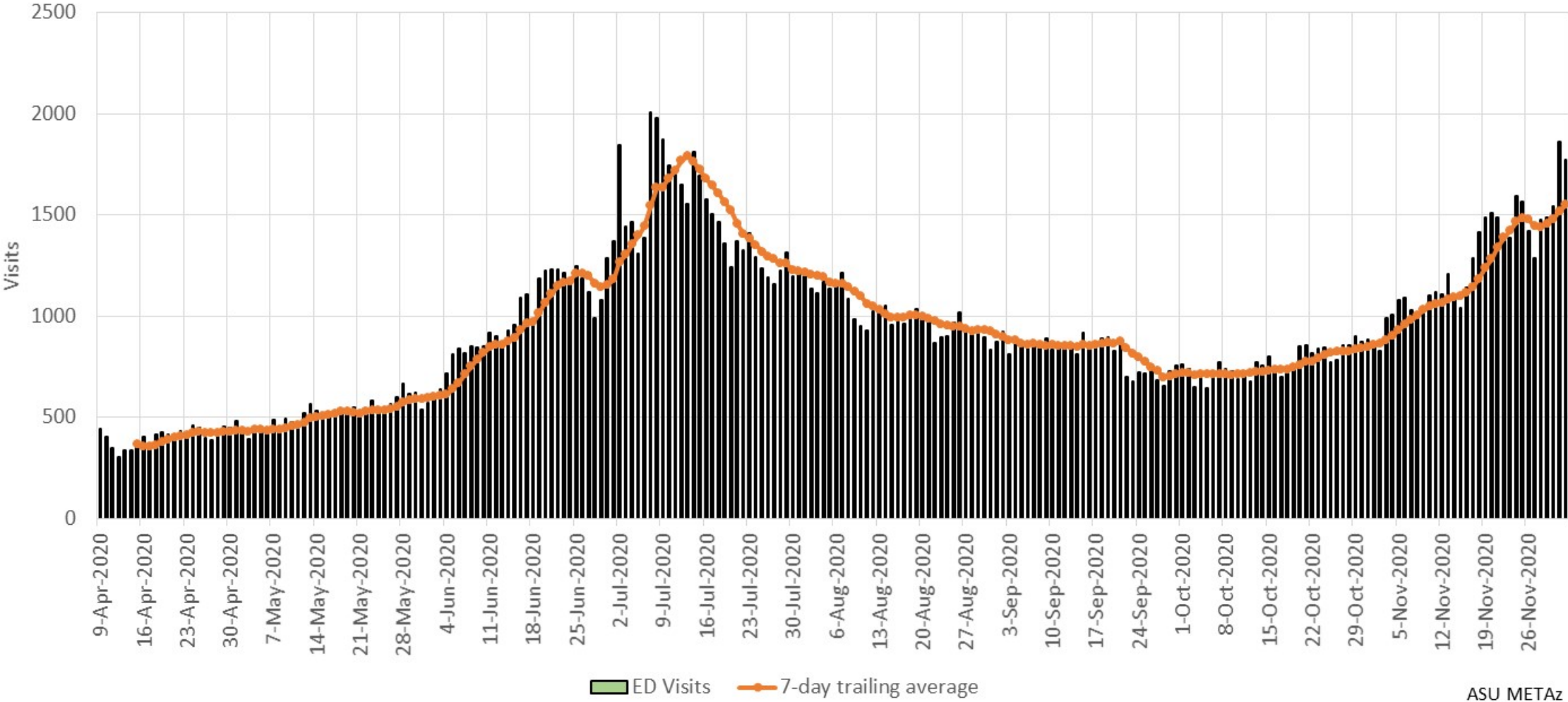


# Arizona Statewide COVID-19 Hospital Resource Utilization



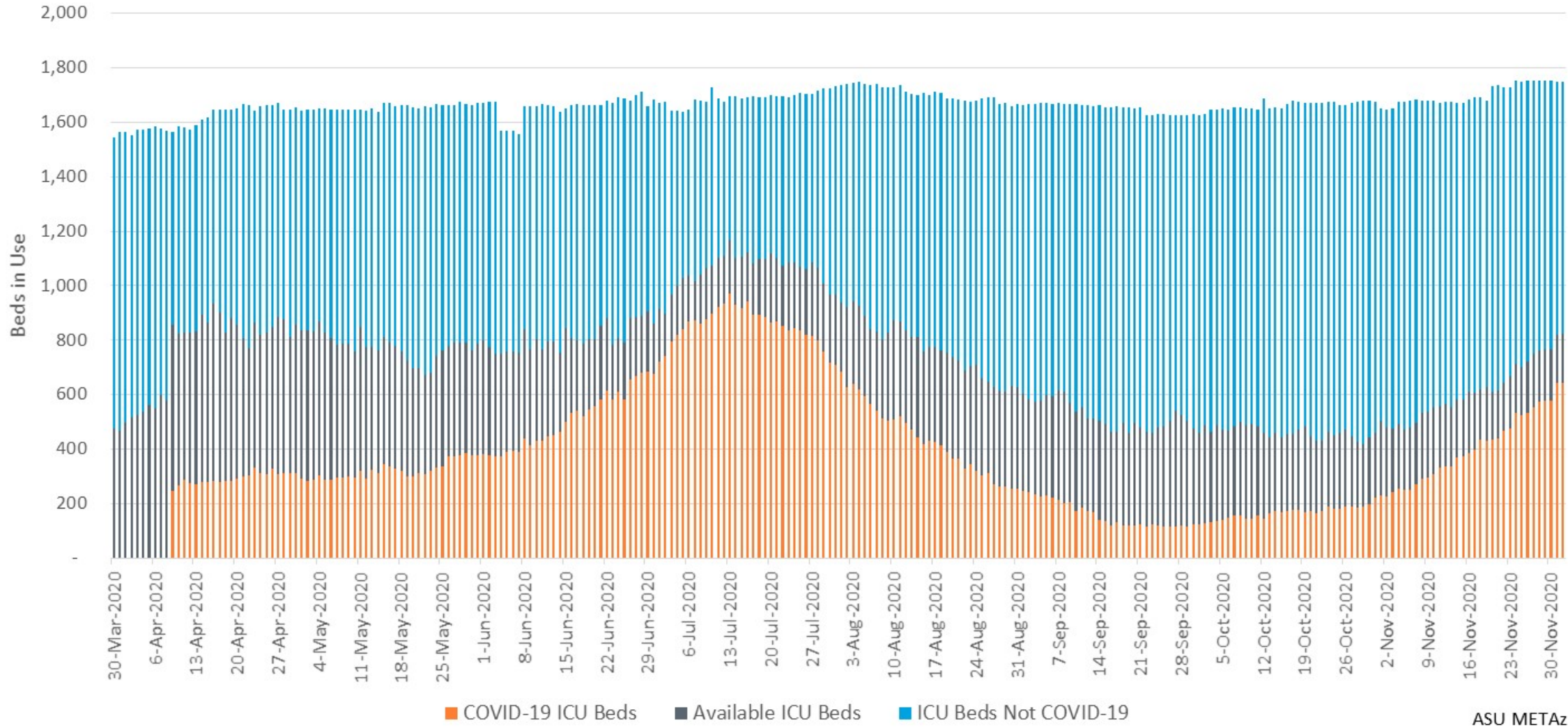
ASU METAz

### Arizona Statewide COVID-19 Emergency Department Visits



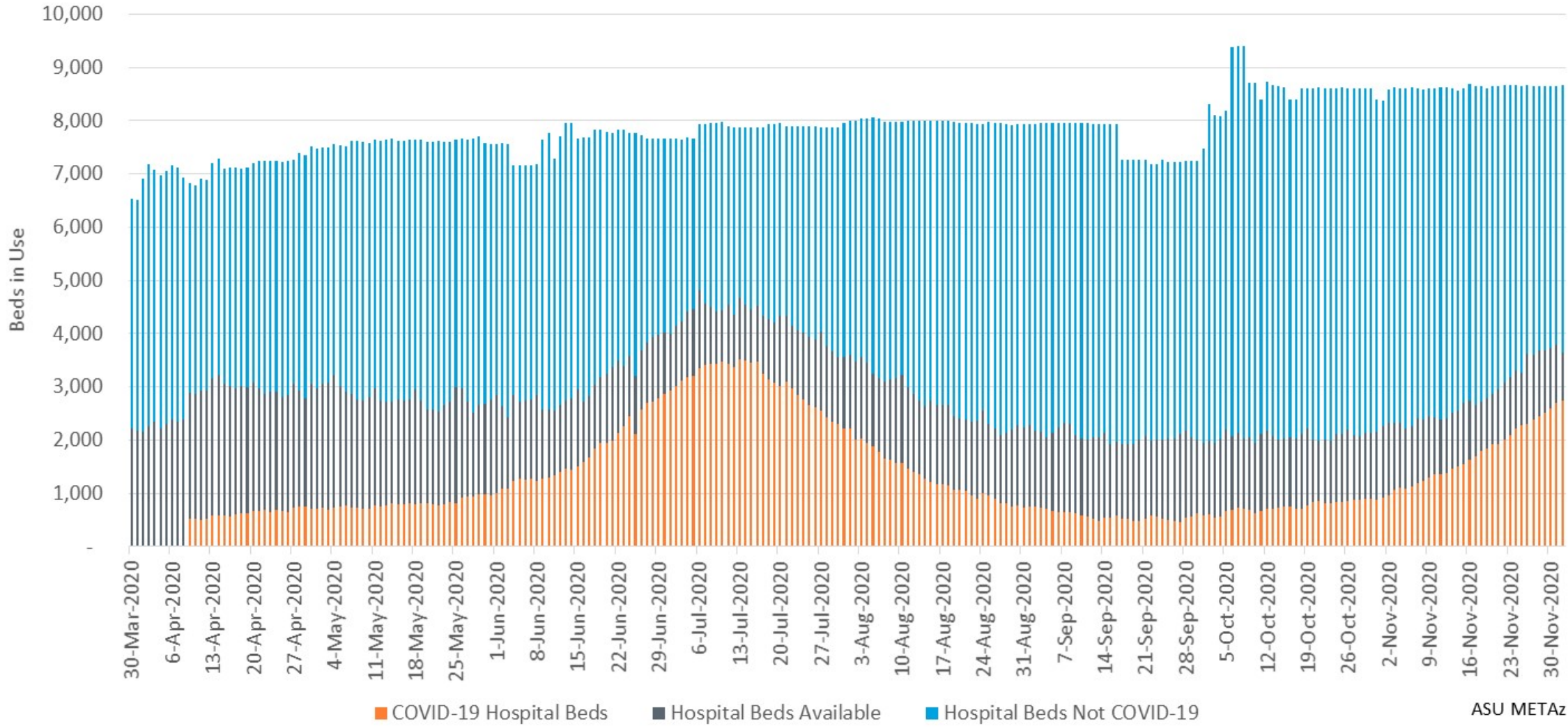
ASU METAz

### Arizona Statewide ICU Bed Usage



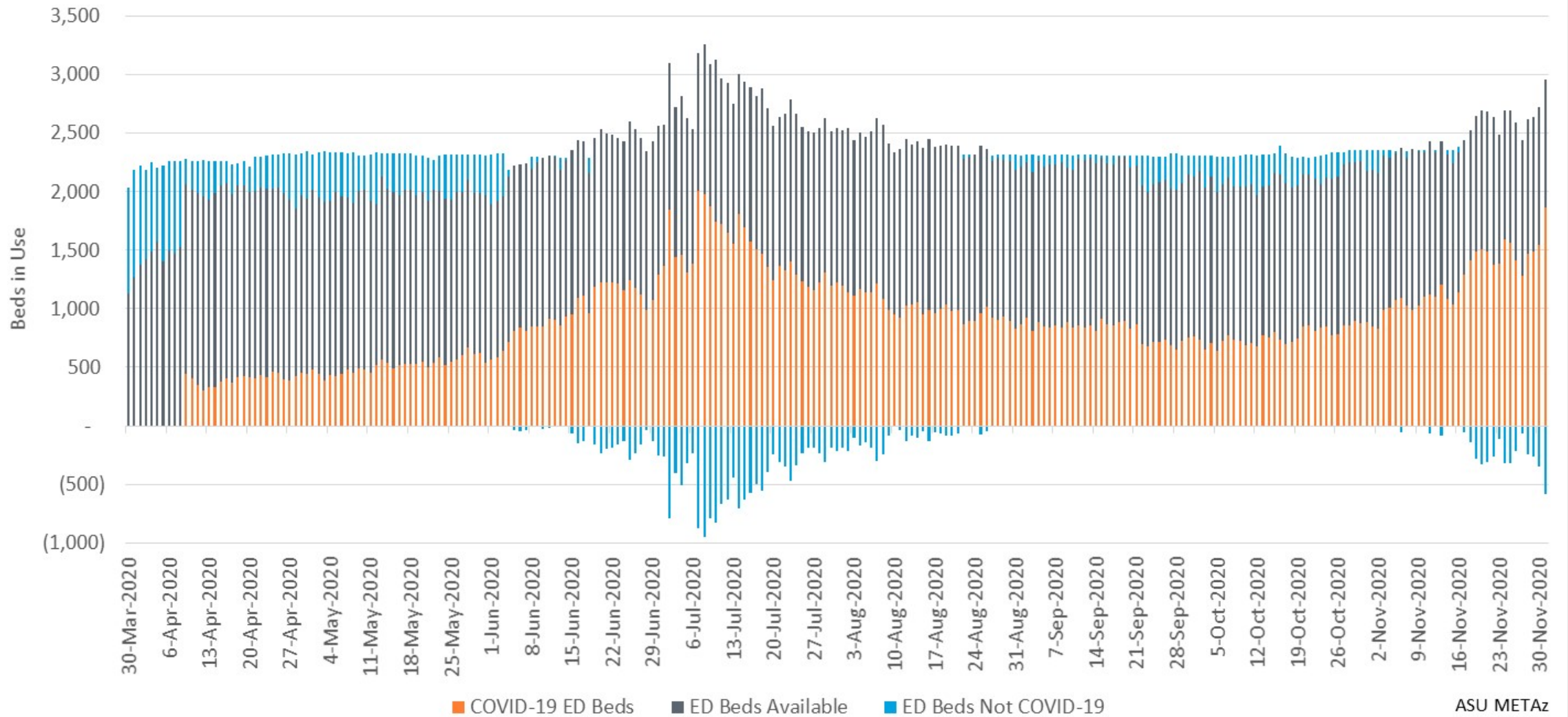
ASU METAz

### Arizona Statewide Inpatient Bed Usage



ASU METAz

### Arizona Statewide ED Bed Usage



Where blue bars are below zero, COVID ED patients exceeded total reported ED bed usage